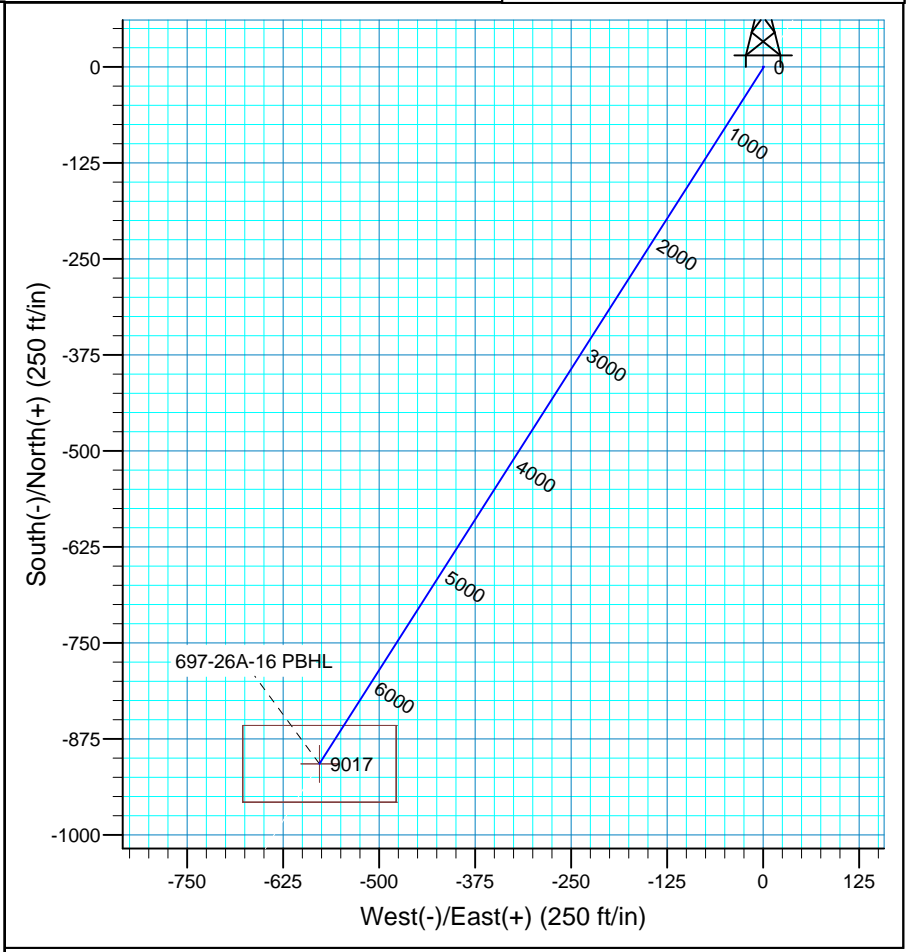
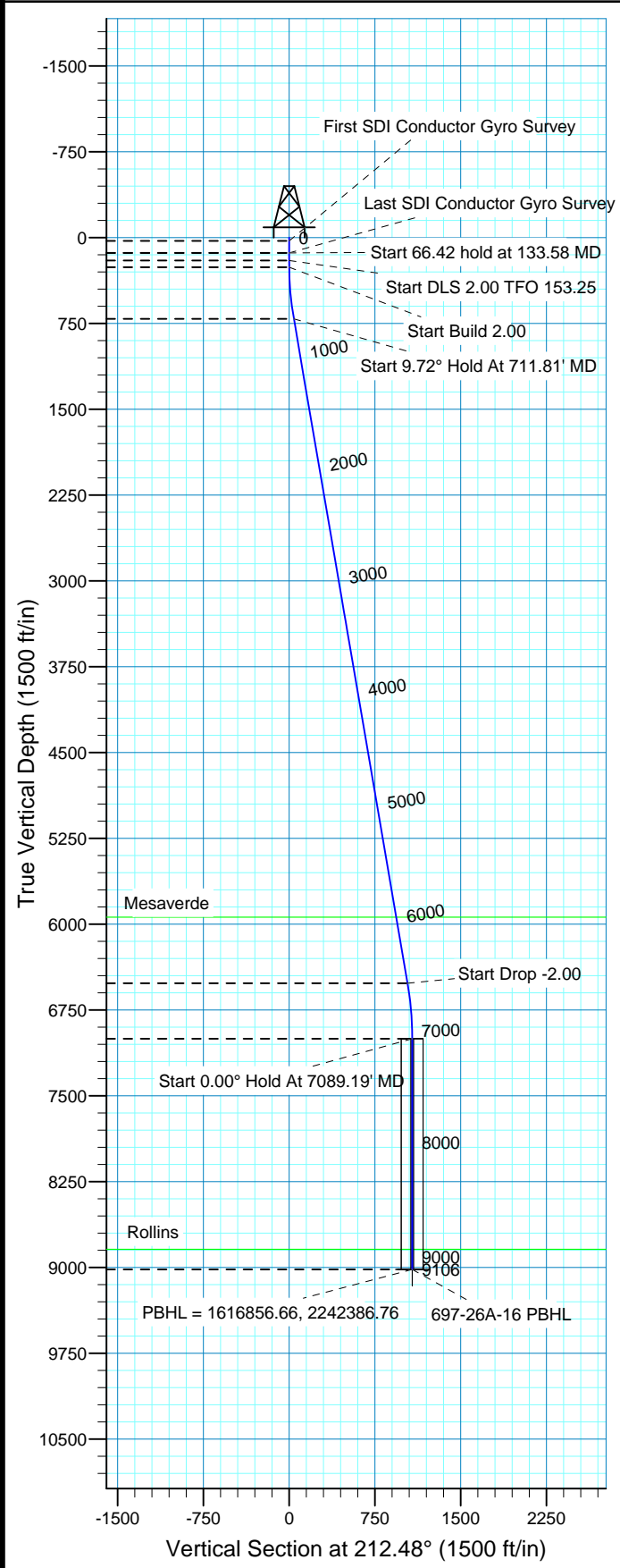


WELL DETAILS: 697-26A-16						
GL 8400' & RKB 24' @ 8424.00ft (H&P 324) 8400.00						
+N/-S	+E/-W	Northing	Easting	Latitude	Longitude	Slot
0.00	0.00	1617746.81	2242991.13	39° 29' 55.687 N	108° 10' 58.866 W	D



FORMATION TOP DETAILS	Plan: Plan #2 (697-26A-16/OH)
TVDPath MDPPath Formation 5939.00 6017.46 Mesaverde 8841.00 8930.19 Rollins	Created By: Rex Hall Date: 2010-04-27 PROJECT DETAILS: Garfield County, CO NAD 83 Geodetic System: US State Plane 1983 Datum: North American Datum 1983 Ellipsoid: GRS 1980 Zone: Colorado Central Zone System Datum: Mean Sea Level Local North: True

SECTION DETAILS										
Sec	MD	Inc	Azi	TVD	+N/-S	+E/-W	DLeg	TFace	VSec	Target
1	133.58	0.66	86.02	133.58	0.31	-0.13	0.00	0.00	-0.19	
2	200.00	0.66	86.02	199.99	0.36	0.64	0.00	0.00	-0.65	
3	258.94	0.66	212.52	258.93	0.10	0.79	2.00	153.25	-0.51	697-26A-16 PBHL
4	711.81	9.72	212.52	709.47	-34.40	-21.20	2.00	0.00	40.40	
5	6603.32	9.72	212.52	6516.45	-872.95	-555.73	0.00	0.00	1034.83	
6	7089.19	0.00	0.00	7000.00	-907.61	-577.82	2.00	180.00	1075.93	
7	9106.19	0.00	0.00	9017.00	-907.61	-577.82	0.00	0.00	1075.93	697-26A-16 PBHL



Marathon Oil Co.

Garfield County, CO NAD 83

697-26A Pad

697-26A-16 - Slot D

OH

Plan: Plan #2

Standard Planning Report

27 April, 2010



Database:	EDM 2003.16 Multi-User Db	Local Co-ordinate Reference:	Well 697-26A-16 - Slot D
Company:	Marathon Oil Co.	TVD Reference:	GL 8400' & RKB 24' @ 8424.00ft (H&P 324)
Project:	Garfield County, CO NAD 83	MD Reference:	GL 8400' & RKB 24' @ 8424.00ft (H&P 324)
Site:	697-26A Pad	North Reference:	True
Well:	697-26A-16	Survey Calculation Method:	Minimum Curvature
Wellbore:	OH		
Design:	Plan #2		

Project	Garfield County, CO NAD 83		
Map System:	US State Plane 1983	System Datum:	Mean Sea Level
Geo Datum:	North American Datum 1983		
Map Zone:	Colorado Central Zone		

Site	697-26A Pad, Sec 26 T6S R97W				
Site Position:		Northing:	1,617,794.11 ft	Latitude:	39° 29' 56.147 N
From:	Map	Easting:	2,242,966.23 ft	Longitude:	108° 10' 59.202 W
Position Uncertainty:	0.00 ft	Slot Radius:	in	Grid Convergence:	-1.69 °

Well	697-26A-16 - Slot D, 888' FNL & 1400' FWL					
Well Position	+N/-S	0.00 ft	Northing:	1,617,746.81 ft	Latitude:	39° 29' 55.687 N
	+E/-W	0.00 ft	Easting:	2,242,991.13 ft	Longitude:	108° 10' 58.866 W
Position Uncertainty		0.00 ft	Wellhead Elevation:	ft	Ground Level:	8,400.00 ft

Wellbore	OH				
Magnetics	Model Name	Sample Date	Declination (°)	Dip Angle (°)	Field Strength (nT)
	IGRF200510	12/31/2009	10.60	65.76	52,382

Design	Plan #2				
Audit Notes:					
Version:	Phase:	PLAN	Tie On Depth:	133.58	
Vertical Section:	Depth From (TVD) (ft)	+N/-S (ft)	+E/-W (ft)	Direction (°)	
	0.00	0.00	0.00	212.48	

Plan Sections										
Measured Depth (ft)	Inclination (°)	Azimuth (°)	Vertical Depth (ft)	+N/-S (ft)	+E/-W (ft)	Dogleg Rate (°/100ft)	Build Rate (°/100ft)	Turn Rate (°/100ft)	TFO (°)	Target
133.58	0.66	86.02	133.58	0.31	-0.13	0.00	0.00	0.00	0.00	
200.00	0.66	86.02	199.99	0.36	0.64	0.00	0.00	0.00	0.00	
258.94	0.66	212.52	258.93	0.10	0.79	2.00	0.00	214.63	153.25	697-26A-16 PBHL
711.81	9.72	212.52	709.47	-34.40	-21.20	2.00	2.00	0.00	0.00	
6,603.32	9.72	212.52	6,516.45	-872.95	-555.73	0.00	0.00	0.00	0.00	
7,089.19	0.00	0.00	7,000.00	-907.61	-577.82	2.00	-2.00	0.00	180.00	
9,106.19	0.00	0.00	9,017.00	-907.61	-577.82	0.00	0.00	0.00	0.00	697-26A-16 PBHL

Database:	EDM 2003.16 Multi-User Db	Local Co-ordinate Reference:	Well 697-26A-16 - Slot D
Company:	Marathon Oil Co.	TVD Reference:	GL 8400' & RKB 24' @ 8424.00ft (H&P 324)
Project:	Garfield County, CO NAD 83	MD Reference:	GL 8400' & RKB 24' @ 8424.00ft (H&P 324)
Site:	697-26A Pad	North Reference:	True
Well:	697-26A-16	Survey Calculation Method:	Minimum Curvature
Wellbore:	OH		
Design:	Plan #2		

Planned Survey

Measured Depth (ft)	Inclination (°)	Azimuth (°)	Vertical Depth (ft)	+N/-S (ft)	+E/-W (ft)	Vertical Section (ft)	Dogleg Rate (°/100ft)	Build Rate (°/100ft)	Turn Rate (°/100ft)
0.00	0.00	0.00	0.00	0.00	0.00	0.00	0.00	0.00	0.00
100.00	0.14	3.47	100.00	0.25	-0.35	-0.03	0.14	0.14	0.00
133.58	0.66	86.02	133.58	0.31	-0.13	-0.19	1.96	1.55	245.83
Start 66.42 hold at 133.58 MD									
200.00	0.66	86.02	199.99	0.36	0.64	-0.65	0.00	0.00	0.00
Start DLS 2.00 TFO 153.25									
258.94	0.66	212.52	258.93	0.10	0.79	-0.51	2.00	0.00	214.63
Start Build 2.00									
300.00	1.48	212.52	299.98	-0.55	0.38	0.26	2.00	2.00	0.00
400.00	3.48	212.52	399.89	-4.20	-1.95	4.59	2.00	2.00	0.00
500.00	5.48	212.52	499.57	-10.79	-6.15	12.40	2.00	2.00	0.00
600.00	7.48	212.52	598.93	-20.30	-12.21	23.69	2.00	2.00	0.00
700.00	9.48	212.52	697.83	-32.74	-20.14	38.44	2.00	2.00	0.00
711.81	9.72	212.52	709.47	-34.40	-21.20	40.40	2.00	2.00	0.00
Start 9.72° Hold At 711.81' MD									
800.00	9.72	212.52	796.40	-46.95	-29.20	55.29	0.00	0.00	0.00
900.00	9.72	212.52	894.97	-61.19	-38.27	72.17	0.00	0.00	0.00
1,000.00	9.72	212.52	993.53	-75.42	-47.35	89.05	0.00	0.00	0.00
1,100.00	9.72	212.52	1,092.10	-89.65	-56.42	105.93	0.00	0.00	0.00
1,200.00	9.72	212.52	1,190.66	-103.89	-65.49	122.81	0.00	0.00	0.00
1,300.00	9.72	212.52	1,289.23	-118.12	-74.57	139.69	0.00	0.00	0.00
1,400.00	9.72	212.52	1,387.79	-132.35	-83.64	156.56	0.00	0.00	0.00
1,500.00	9.72	212.52	1,486.36	-146.59	-92.71	173.44	0.00	0.00	0.00
1,600.00	9.72	212.52	1,584.92	-160.82	-101.78	190.32	0.00	0.00	0.00
1,700.00	9.72	212.52	1,683.49	-175.05	-110.86	207.20	0.00	0.00	0.00
1,800.00	9.72	212.52	1,782.05	-189.29	-119.93	224.08	0.00	0.00	0.00
1,900.00	9.72	212.52	1,880.62	-203.52	-129.00	240.96	0.00	0.00	0.00
2,000.00	9.72	212.52	1,979.18	-217.75	-138.08	257.84	0.00	0.00	0.00
2,100.00	9.72	212.52	2,077.75	-231.98	-147.15	274.72	0.00	0.00	0.00
2,200.00	9.72	212.52	2,176.31	-246.22	-156.22	291.60	0.00	0.00	0.00
2,300.00	9.72	212.52	2,274.88	-260.45	-165.29	308.47	0.00	0.00	0.00
2,400.00	9.72	212.52	2,373.44	-274.68	-174.37	325.35	0.00	0.00	0.00
2,500.00	9.72	212.52	2,472.01	-288.92	-183.44	342.23	0.00	0.00	0.00
2,600.00	9.72	212.52	2,570.57	-303.15	-192.51	359.11	0.00	0.00	0.00
2,700.00	9.72	212.52	2,669.14	-317.38	-201.59	375.99	0.00	0.00	0.00
2,800.00	9.72	212.52	2,767.71	-331.62	-210.66	392.87	0.00	0.00	0.00
2,900.00	9.72	212.52	2,866.27	-345.85	-219.73	409.75	0.00	0.00	0.00
3,000.00	9.72	212.52	2,964.84	-360.08	-228.80	426.63	0.00	0.00	0.00
3,100.00	9.72	212.52	3,063.40	-374.32	-237.88	443.51	0.00	0.00	0.00
3,200.00	9.72	212.52	3,161.97	-388.55	-246.95	460.39	0.00	0.00	0.00
3,300.00	9.72	212.52	3,260.53	-402.78	-256.02	477.26	0.00	0.00	0.00
3,400.00	9.72	212.52	3,359.10	-417.02	-265.10	494.14	0.00	0.00	0.00
3,500.00	9.72	212.52	3,457.66	-431.25	-274.17	511.02	0.00	0.00	0.00
3,600.00	9.72	212.52	3,556.23	-445.48	-283.24	527.90	0.00	0.00	0.00
3,700.00	9.72	212.52	3,654.79	-459.72	-292.31	544.78	0.00	0.00	0.00
3,800.00	9.72	212.52	3,753.36	-473.95	-301.39	561.66	0.00	0.00	0.00
3,900.00	9.72	212.52	3,851.92	-488.18	-310.46	578.54	0.00	0.00	0.00
4,000.00	9.72	212.52	3,950.49	-502.41	-319.53	595.42	0.00	0.00	0.00
4,100.00	9.72	212.52	4,049.05	-516.65	-328.61	612.30	0.00	0.00	0.00
4,200.00	9.72	212.52	4,147.62	-530.88	-337.68	629.18	0.00	0.00	0.00
4,300.00	9.72	212.52	4,246.18	-545.11	-346.75	646.05	0.00	0.00	0.00
4,400.00	9.72	212.52	4,344.75	-559.35	-355.82	662.93	0.00	0.00	0.00
4,500.00	9.72	212.52	4,443.31	-573.58	-364.90	679.81	0.00	0.00	0.00

Database: EDM 2003.16 Multi-User Db
Company: Marathon Oil Co.
Project: Garfield County, CO NAD 83
Site: 697-26A Pad
Well: 697-26A-16
Wellbore: OH
Design: Plan #2

Local Co-ordinate Reference: Well 697-26A-16 - Slot D
TVD Reference: GL 8400' & RKB 24' @ 8424.00ft (H&P 324)
MD Reference: GL 8400' & RKB 24' @ 8424.00ft (H&P 324)
North Reference: True
Survey Calculation Method: Minimum Curvature

Planned Survey

Measured Depth (ft)	Inclination (°)	Azimuth (°)	Vertical Depth (ft)	+N/-S (ft)	+E/-W (ft)	Vertical Section (ft)	Dogleg Rate (°/100ft)	Build Rate (°/100ft)	Turn Rate (°/100ft)
4,600.00	9.72	212.52	4,541.88	-587.81	-373.97	696.69	0.00	0.00	0.00
4,700.00	9.72	212.52	4,640.44	-602.05	-383.04	713.57	0.00	0.00	0.00
4,800.00	9.72	212.52	4,739.01	-616.28	-392.12	730.45	0.00	0.00	0.00
4,900.00	9.72	212.52	4,837.57	-630.51	-401.19	747.33	0.00	0.00	0.00
5,000.00	9.72	212.52	4,936.14	-644.75	-410.26	764.21	0.00	0.00	0.00
5,100.00	9.72	212.52	5,034.70	-658.98	-419.33	781.09	0.00	0.00	0.00
5,200.00	9.72	212.52	5,133.27	-673.21	-428.41	797.97	0.00	0.00	0.00
5,300.00	9.72	212.52	5,231.84	-687.45	-437.48	814.84	0.00	0.00	0.00
5,400.00	9.72	212.52	5,330.40	-701.68	-446.55	831.72	0.00	0.00	0.00
5,500.00	9.72	212.52	5,428.97	-715.91	-455.63	848.60	0.00	0.00	0.00
5,600.00	9.72	212.52	5,527.53	-730.15	-464.70	865.48	0.00	0.00	0.00
5,700.00	9.72	212.52	5,626.10	-744.38	-473.77	882.36	0.00	0.00	0.00
5,800.00	9.72	212.52	5,724.66	-758.61	-482.84	899.24	0.00	0.00	0.00
5,900.00	9.72	212.52	5,823.23	-772.85	-491.92	916.12	0.00	0.00	0.00
6,000.00	9.72	212.52	5,921.79	-787.08	-500.99	933.00	0.00	0.00	0.00
6,017.46	9.72	212.52	5,939.00	-789.56	-502.57	935.94	0.00	0.00	0.00
Mesaverde									
6,100.00	9.72	212.52	6,020.36	-801.31	-510.06	949.88	0.00	0.00	0.00
6,200.00	9.72	212.52	6,118.92	-815.54	-519.14	966.75	0.00	0.00	0.00
6,300.00	9.72	212.52	6,217.49	-829.78	-528.21	983.63	0.00	0.00	0.00
6,400.00	9.72	212.52	6,316.05	-844.01	-537.28	1,000.51	0.00	0.00	0.00
6,500.00	9.72	212.52	6,414.62	-858.24	-546.35	1,017.39	0.00	0.00	0.00
6,600.00	9.72	212.52	6,513.18	-872.48	-555.43	1,034.27	0.00	0.00	0.00
6,603.32	9.72	212.52	6,516.45	-872.95	-555.73	1,034.83	0.00	0.00	0.00
Start Drop -2.00									
6,700.00	7.78	212.52	6,612.01	-885.35	-563.63	1,049.54	2.00	-2.00	0.00
6,800.00	5.78	212.52	6,711.30	-895.31	-569.98	1,061.35	2.00	-2.00	0.00
6,900.00	3.78	212.52	6,810.95	-902.34	-574.47	1,069.69	2.00	-2.00	0.00
7,000.00	1.78	212.52	6,910.82	-906.44	-577.08	1,074.55	2.00	-2.00	0.00
7,089.19	0.00	0.00	7,000.00	-907.61	-577.82	1,075.93	2.00	-2.00	0.00
Start 0.00° Hold At 7089.19' MD									
7,100.00	0.00	0.00	7,010.81	-907.61	-577.82	1,075.93	0.00	0.00	0.00
7,200.00	0.00	0.00	7,110.81	-907.61	-577.82	1,075.93	0.00	0.00	0.00
7,300.00	0.00	0.00	7,210.81	-907.61	-577.82	1,075.93	0.00	0.00	0.00
7,400.00	0.00	0.00	7,310.81	-907.61	-577.82	1,075.93	0.00	0.00	0.00
7,500.00	0.00	0.00	7,410.81	-907.61	-577.82	1,075.93	0.00	0.00	0.00
7,600.00	0.00	0.00	7,510.81	-907.61	-577.82	1,075.93	0.00	0.00	0.00
7,700.00	0.00	0.00	7,610.81	-907.61	-577.82	1,075.93	0.00	0.00	0.00
7,800.00	0.00	0.00	7,710.81	-907.61	-577.82	1,075.93	0.00	0.00	0.00
7,900.00	0.00	0.00	7,810.81	-907.61	-577.82	1,075.93	0.00	0.00	0.00
8,000.00	0.00	0.00	7,910.81	-907.61	-577.82	1,075.93	0.00	0.00	0.00
8,100.00	0.00	0.00	8,010.81	-907.61	-577.82	1,075.93	0.00	0.00	0.00
8,200.00	0.00	0.00	8,110.81	-907.61	-577.82	1,075.93	0.00	0.00	0.00
8,300.00	0.00	0.00	8,210.81	-907.61	-577.82	1,075.93	0.00	0.00	0.00
8,400.00	0.00	0.00	8,310.81	-907.61	-577.82	1,075.93	0.00	0.00	0.00
8,500.00	0.00	0.00	8,410.81	-907.61	-577.82	1,075.93	0.00	0.00	0.00
8,600.00	0.00	0.00	8,510.81	-907.61	-577.82	1,075.93	0.00	0.00	0.00
8,700.00	0.00	0.00	8,610.81	-907.61	-577.82	1,075.93	0.00	0.00	0.00
8,800.00	0.00	0.00	8,710.81	-907.61	-577.82	1,075.93	0.00	0.00	0.00
8,900.00	0.00	0.00	8,810.81	-907.61	-577.82	1,075.93	0.00	0.00	0.00
8,930.19	0.00	0.00	8,841.00	-907.61	-577.82	1,075.93	0.00	0.00	0.00
Rollins									
9,000.00	0.00	0.00	8,910.81	-907.61	-577.82	1,075.93	0.00	0.00	0.00

Database:	EDM 2003.16 Multi-User Db	Local Co-ordinate Reference:	Well 697-26A-16 - Slot D
Company:	Marathon Oil Co.	TVD Reference:	GL 8400' & RKB 24' @ 8424.00ft (H&P 324)
Project:	Garfield County, CO NAD 83	MD Reference:	GL 8400' & RKB 24' @ 8424.00ft (H&P 324)
Site:	697-26A Pad	North Reference:	True
Well:	697-26A-16	Survey Calculation Method:	Minimum Curvature
Wellbore:	OH		
Design:	Plan #2		

Planned Survey									
Measured Depth (ft)	Inclination (°)	Azimuth (°)	Vertical Depth (ft)	+N/-S (ft)	+E/-W (ft)	Vertical Section (ft)	Dogleg Rate (°/100ft)	Build Rate (°/100ft)	Turn Rate (°/100ft)
9,100.00	0.00	0.00	9,010.81	-907.61	-577.82	1,075.93	0.00	0.00	0.00
9,106.19	0.00	0.00	9,017.00	-907.61	-577.82	1,075.93	0.00	0.00	0.00
PBHL = 1616856.66, 2242386.76 - 697-26A-16 PBHL - 697-26A-16 PBHL									

Targets									
Target Name	Dip Angle (°)	Dip Dir. (°)	TVD (ft)	+N/-S (ft)	+E/-W (ft)	Northing (ft)	Easting (ft)	Latitude	Longitude
- hit/miss target									
- Shape									
697-26A-16 PBHL	0.00	0.00	9,017.00	-907.61	-577.82	1,616,856.66	2,242,386.76	39° 29' 46.716 N	108° 11' 6.238 W
- plan hits target center									
- Rectangle (sides W100.00 H200.00 D0.00)									

Formations					
Measured Depth (ft)	Vertical Depth (ft)	Name	Lithology	Dip (°)	Dip Direction (°)
6,017.46	5,939.00	Mesaverde		0.00	
8,930.19	8,841.00	Rollins		0.00	

Plan Annotations				
Measured Depth (ft)	Vertical Depth (ft)	Local Coordinates		Comment
		+N/-S (ft)	+E/-W (ft)	
133.58	133.58	0.31	-0.13	Start 66.42 hold at 133.58 MD
200.00	199.99	0.36	0.64	Start DLS 2.00 TFO 153.25
258.94	258.93	0.10	0.79	Start Build 2.00
711.81	709.47	-34.40	-21.20	Start 9.72° Hold At 711.81' MD
6,603.32	6,516.45	-872.95	-555.73	Start Drop -2.00
7,089.19	7,000.00	-907.61	-577.82	Start 0.00° Hold At 7089.19' MD
9,106.19	9,017.00	-907.61	-577.82	PBHL = 1616856.66, 2242386.76