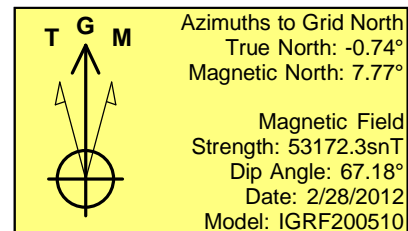
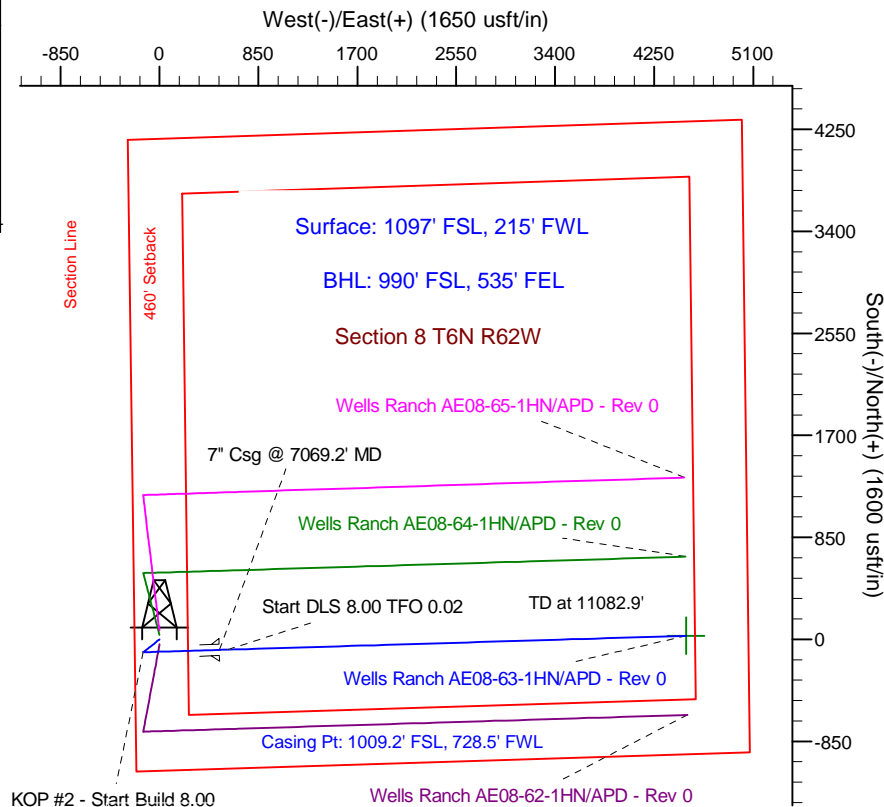
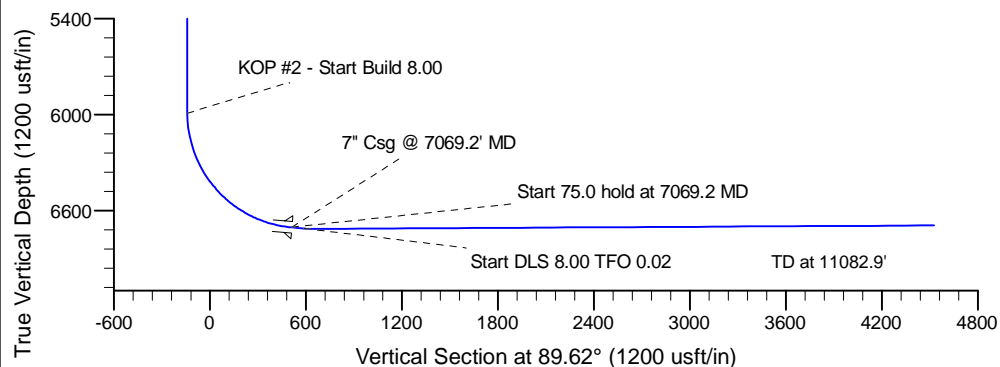
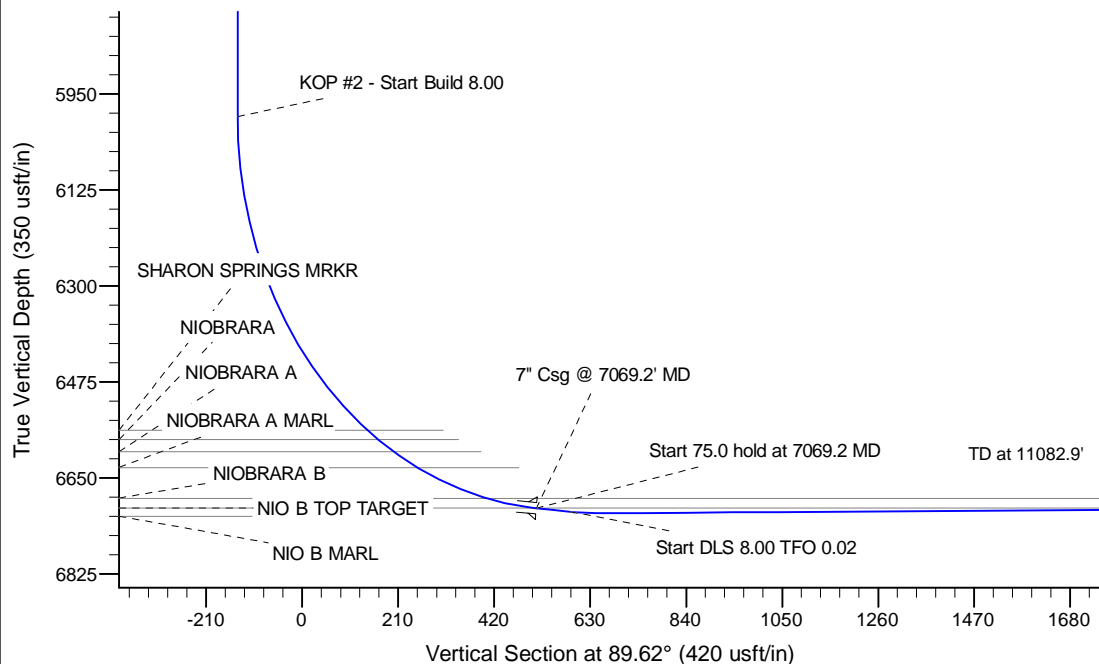


Project: Wattenberg Field
 Site: AE (Sec.8-T06N-R62W) Weld County, CO
 Well: Wells Ranch AE08-63-1HN
 Wellbore: Original Drilling
 Design: APD - Rev 0

Northern Region Drilling

Geodetic System: US State Plane 1983
 Datum: North American Datum 1983
 Ellipsoid: GRS 1980
 Zone: Colorado Northern Zone
 System Datum: Mean Sea Level

SECTION DETAILS										
Sec	MD	Inc	Azi	TVD	+N/-S	+E/-W	Dleg	TFace	Vsect	Target
1	0.0	0.00	0.00	0.0	0.0	0.0	0.00	0.00	0.0	
2	2500.0	0.00	0.00	2500.0	0.0	0.0	0.00	0.00	0.0	
3	2981.0	12.02	232.61	2977.5	-30.5	-40.0	2.50	232.61	-40.2	
4	3344.0	12.02	232.61	3332.5	-76.5	-100.0	0.00	0.00	-100.5	
5	3825.0	0.00	0.00	3810.0	-107.0	-140.0	2.50	180.00	-140.7	
6	6006.7	0.00	0.00	5991.7	-107.0	-140.0	0.00	0.00	-140.7	
7	7069.2	85.00	88.32	6705.2	-87.8	513.5	8.00	88.32	512.9	
8	7144.2	85.00	88.32	6711.7	-85.6	588.2	0.00	0.00	587.6	
9	7210.7	90.32	88.32	6714.4	-83.7	654.6	8.00	0.02	654.0	
10	11082.9	90.32	88.32	6692.7	29.7	4525.0	0.00	0.00	4525.1	Wells Ranch AE08-63-1HN BHL 990'FSL, 535'FEL



WELL DETAILS: Wells Ranch AE08-63-1HN			
Ground Level: 4929.0			
Northing	Easting	Latitude	Longitude
1425949.25	3318387.56	40° 29' 49.164 N	104° 21' 18.540 W
Plan: APD - Rev 0 (Wells Ranch AE08-63-1HN/Original Drilling)			
Created By: Carrie Willers		Date: 8:50, February 29 2012	
OK to submit with 2A as per Noble Drilling 3/1/2012 09:02			