

# T20S, R70W, 6th P.M.

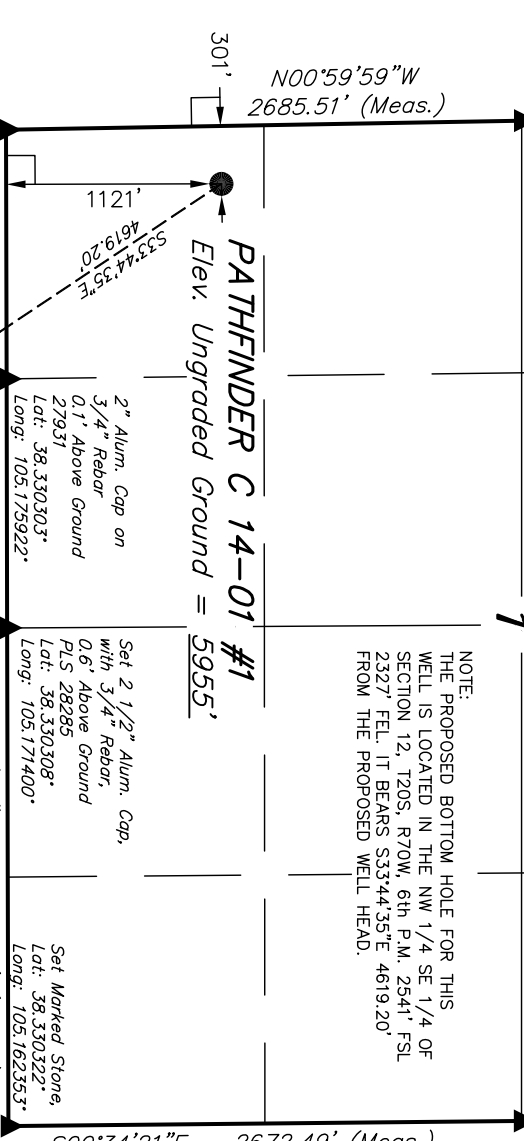
1944, GLO Brass Cap,  
0.6' Above Ground  
Lat: 38.345172°  
Long: 105.180769°

T19S  
T20S  
S89°14'55"E - 2657.67' (Meas.)  
S89°24'28"E - 2574.77' (Meas.)  
1944, GLO Brass Cap,  
1.5' Above Ground  
Lat: 38.345075°  
Long: 105.171503°  
3 1/2" Brass Cap,  
0.9' Above Ground  
In Pile of Stones  
Lat: 38.344997°  
Long: 105.162525°

R 70  
R 69

N01°00'00"W - 2733.15' (Meas.)

Set 2 1/2" Alum. Cap,  
on 3/4" Rebar,  
1.0' Above Ground  
PLS 28285  
Lat: 38.337669°  
Long: 105.180606°



NOTE:  
THE PROPOSED BOTTOM HOLE FOR THIS WELL IS LOCATED IN THE NW 1/4 SE 1/4 OF SECTION 12, T20S, R70W, 6th P.M., 2541' FSL 2327' FEL. IT BEARS S33°44'35"E 4619.20' FROM THE PROPOSED WELL HEAD.

S00°32'39"E - 2672.31' (Meas.)

1995, 2 1/2" Priv. Alum. Cap,  
0.4' Above Ground  
PLS 19983  
Lat: 38.337661°  
Long: 105.162442°

S00°34'21"E - 2672.49' (Meas.)

S89°52'02"W - 2594.81' (Meas.)

Set Marked Stone,  
Lat: 38.330297°  
Long: 105.180444°

LEGEND:

- ◻ = 90° SYMBOL
- = PROPOSED WELL HEAD.
- ▲ = SECTION CORNERS LOCATED.

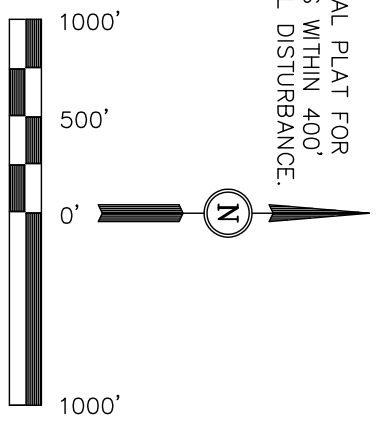
## AUS-TEX EXPLORATION, INC.

Well location, PATHFINDER C 14-01 #1 (SURFACE LOCATION), located as shown in the SW 1/4 SW 1/4 of Section 1, T20S, R70W, 6th P.M., Fremont County, Colorado.

BASIS OF ELEVATION  
USGS COOPERATIVE BASE NETWORK CONTROL STATION, DESIGNATION 'K-341', NGS DATA SHEET LISTS THE NAVD 88 ELEVATION AS BEING 5306.35 FEET.

BASIS OF BEARINGS  
BASIS OF BEARINGS IS A G.P.S. OBSERVATION.

NOTE:  
SEE ADDENDUM TO LEGAL PLAT FOR EXISTING IMPROVEMENTS WITHIN 400' OF THE PROPOSED WELL DISTURBANCE.



CERTIFICATE  
THIS IS TO CERTIFY THAT THE ABOVE PLAT WAS PREPARED FROM FIELD NOTES OF ACTUAL SURVEYS MADE BY ME OR UNDER MY SUPERVISION AND THAT THE SAME ARE TRUE AND CORRECT TO THE BEST OF MY KNOWLEDGE AND BELIEF.

REVISED: 04-17-12  
REVISED: 04-10-12

REGISTERED LAND SURVEYOR  
REGISTRATION NUMBER 1492  
STATE OF COLORADO  
04-17-12

UTAH ENGINEERING & LAND SURVEYING  
85 SOUTH 200 EAST - VERNAL, UTAH 84078  
(435) 789-1017

NAD 83 (SURFACE LOCATION)	
LATITUDE = 38°20'00.15" (38.333375)	
LONGITUDE = 105°10'46.06" (105.179461)	
NAD 27 (SURFACE LOCATION)	
LATITUDE = 38°20'00.15" (38.333375)	
LONGITUDE = 105°10'44.10" (105.178917)	
STATE PLANE NAD 83	
N: 1182277.82 E: 3091950.06	
STATE PLANE NAD 27	
N: 182274.37 E: 2092108.92	

SCALE	1" = 1000'	DATE SURVEYED:	03-27-12	DATE DRAWN:	04-02-12
PARTY	D.N. G.W. H.K.W.	REFERENCES	G.I.O. PLAT		
WEATHER	COOL	FILE	AUS-TEX EXPLORATION, INC.		

PATHFINDER C 14-01 #1 SURFACE LOCATION

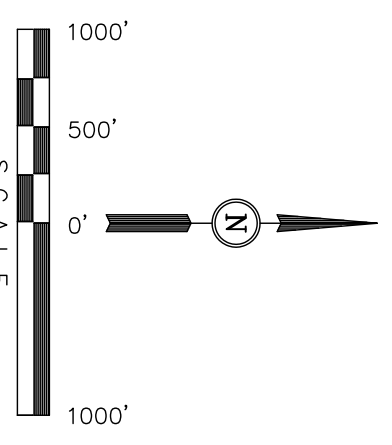
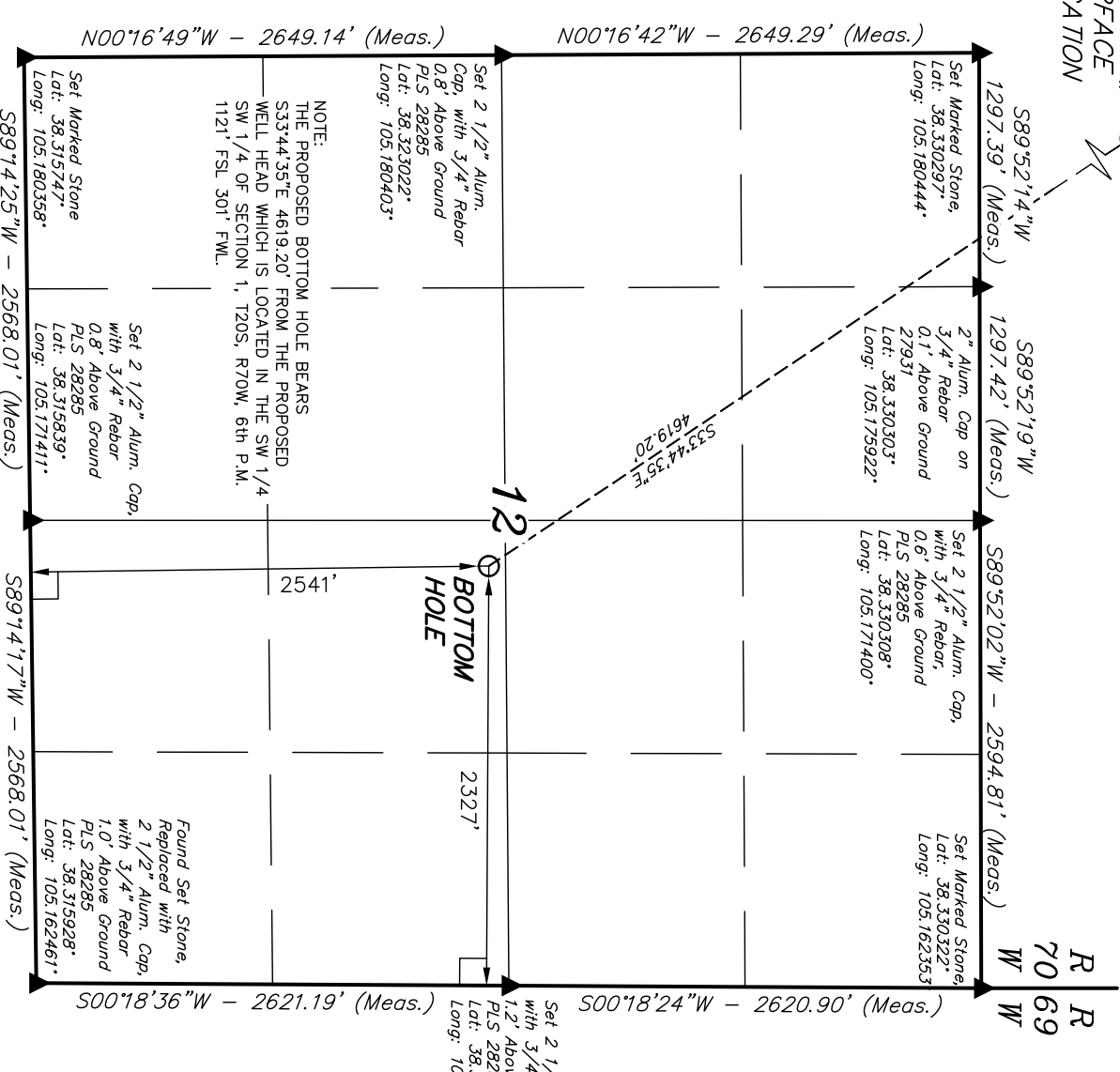
T20S, R70W, 6th P.M.

AUS-TEX EXPLORATION, INC.

Well location, PATHFINDER C 14-01 #1 (TARGET BOTTOM HOLE), located as shown in the NW 1/4 SE 1/4 of Section 12, T20S, R70W, 6th P.M., Fremont County, Colorado.

BASIS OF ELEVATION  
USGS COOPERATIVE BASE NETWORK CONTROL STATION, DESIGNATION "K-341", NGS DATA SHEET LISTS THE NAVD 88 ELEVATION AS BEING 5306.35 FEET.

BASIS OF BEARINGS  
BASIS OF BEARINGS IS A G.P.S. OBSERVATION.



CERTIFICATE  
THIS IS TO CERTIFY THAT THE ABOVE PLAT WAS PREPARED FROM FIELD NOTES OF ACTUAL SURVEYS MADE BY ME OR UNDER MY SUPERVISION AND THAT THE SAME ARE TRUE AND CORRECT TO THE BEST OF MY KNOWLEDGE AND BELIEF.

REGISTERED LAND SURVEYOR  
REGISTRATION NUMBER 1492  
STATE OF COLORADO  
04-17-12

UTTAH ENGINEERING & LAND SURVEYING  
85 SOUTH 200 EAST - VERNAL, UTAH 84078  
(435) 789-1017

SCALE: 1" = 1000'  
DATE SURVEYED: 03-27-12  
DATE DRAWN: 04-02-12

PARTY: D.N. G.W. H.K.W.  
REFERENCES: G.I.O. PLAT  
FILE: AUS-TEX EXPLORATION, INC.

LEGEND:

- = 90° SYMBOL
- = PROPOSED WELL HEAD.
- ▲ = SECTION CORNERS LOCATED.

NAD 83 (TARGET BOTTOM HOLE)	LATITUDE = 38°19'22.17" (38.322825)
	LONGITUDE = 105°10'13.88" (105.170522)
NAD 27 (TARGET BOTTOM HOLE)	LATITUDE = 38°19'22.17" (38.322825)
	LONGITUDE = 105°10'11.92" (105.169978)
STATE PLANE NAD 83	N: 1178444.81 E: 3094528.20
STATE PLANE NAD 27	N: 178441.35 E: 2094687.13

NOTE:  
THE PROPOSED BOTTOM HOLE BEARS S33°44'35"E 4619.20' FROM THE PROPOSED WELL HEAD WHICH IS LOCATED IN THE SW 1/4 SW 1/4 OF SECTION 1, T20S, R70W, 6th P.M. 1121' FSL 301' FWL.

12  
BOTTOM HOLE

Set 2 1/2" Alum. Cap, with 3/4" Rebar 0.8' Above Ground PLS 28285 Lat: 38.323022° Long: 105.180403°

Set 2 1/2" Alum. Cap, with 3/4" Rebar 0.8' Above Ground PLS 28285 Lat: 38.315839° Long: 105.171411°

Found Set Stone, Replaced with 2 1/2" Alum. Cap, with 3/4" Rebar 1.0' Above Ground PLS 28285 Lat: 38.315928° Long: 105.162461°

Set Marked Stone, Lat: 38.330297° Long: 105.180444°

2" Alum. Cap on 3/4" Rebar 0.1' Above Ground 27931 Lat: 38.330303° Long: 105.175922°

Set 2 1/2" Alum. Cap, with 3/4" Rebar, 0.6' Above Ground PLS 28285 Lat: 38.330308° Long: 105.171400°

Set Marked Stone, Lat: 38.330322° Long: 105.162353°

Set 2 1/2" Alum. Cap, with 3/4" Rebar, 1.2' Above Ground PLS 28285 Lat: 38.323128° Long: 105.162406°