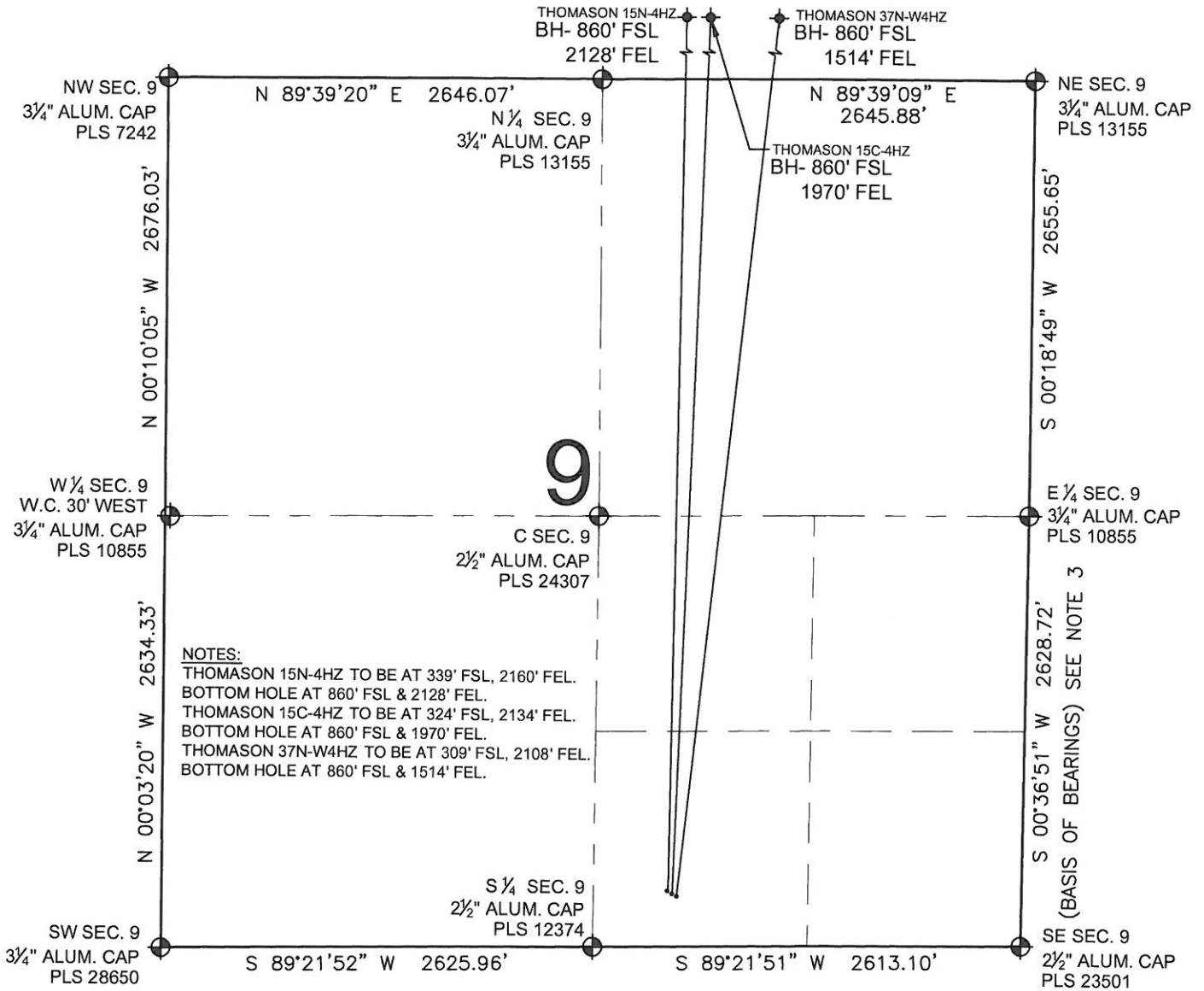


PAD DRAWING: THOMASON 3 PAD SWSE

SECTION 9, TOWNSHIP 2 NORTH, RANGE 65 WEST, 6TH P.M.



NOTES:
 THOMASON 15N-4HZ TO BE AT 339' FSL, 2160' FEL.
 BOTTOM HOLE AT 860' FSL & 2128' FEL.
 THOMASON 15C-4HZ TO BE AT 324' FSL, 2134' FEL.
 BOTTOM HOLE AT 860' FSL & 1970' FEL.
 THOMASON 37N-W4HZ TO BE AT 309' FSL, 2108' FEL.
 BOTTOM HOLE AT 860' FSL & 1514' FEL.

- NOTES:**
1. THIS FIELD SURVEY CONFORMS TO THE MINIMUM STANDARDS SET BY THE C.O.G.C.C., RULE NO. 215
 2. HORIZONTAL POSITIONS AND ORTHOMETRIC ELEVATIONS SHOWN AT THE WELL HEAD, ARE BASED ON GPS-RTK POSITIONS DERIVED FROM MINIMUM 2-HOUR STATIC OBSERVATIONS CORRECTED BY THE NATIONAL GEODETIC SURVEY ONLINE POSITIONING USER SERVICE, O.P.U.S. DATUM: HORIZONTAL = NAD83/2007, VERTICAL = NAVD88
 3. THE BASIS OF BEARINGS ARE STATE PLANE COORDINATE SYSTEM GRID BEARINGS SHOWN HEREON BETWEEN THE DESCRIBED THE MONUMENTS SHOWN HEREON.
 4. GRID DISTANCES ARE SHOWN, AS MEASURED IN THE FIELD, WITH TIES TO WELLS MEASURED PERPENDICULAR TO SECTION LINES.

LEGEND

- ⊕ = EXISTING MONUMENT
- = PROPOSED WELL
- BH = BOTTOM HOLE
- ◆ = BOTTOM HOLE
- ◆ = EXISTING WELL

PREPARED BY:



KERR-MCGEE OIL & GAS ONSHORE LP

FIELD DATE: 12-09-11	PAD NAME: THOMASON 3 PAD SWSE
DRAWING DATE: 12-22-11	SURFACE LOCATION: WELD COUNTY, COLORADO
BY: SDL	SW 1/4 SE 1/4, SEC. 9, T2N, R65W, 6TH P.M.

