

Location ID: 334971 Williams



Viewing north: Stormwater collection drain & approximate orientation of subsurface piping.



Close up view

“PA14-32 Pad”

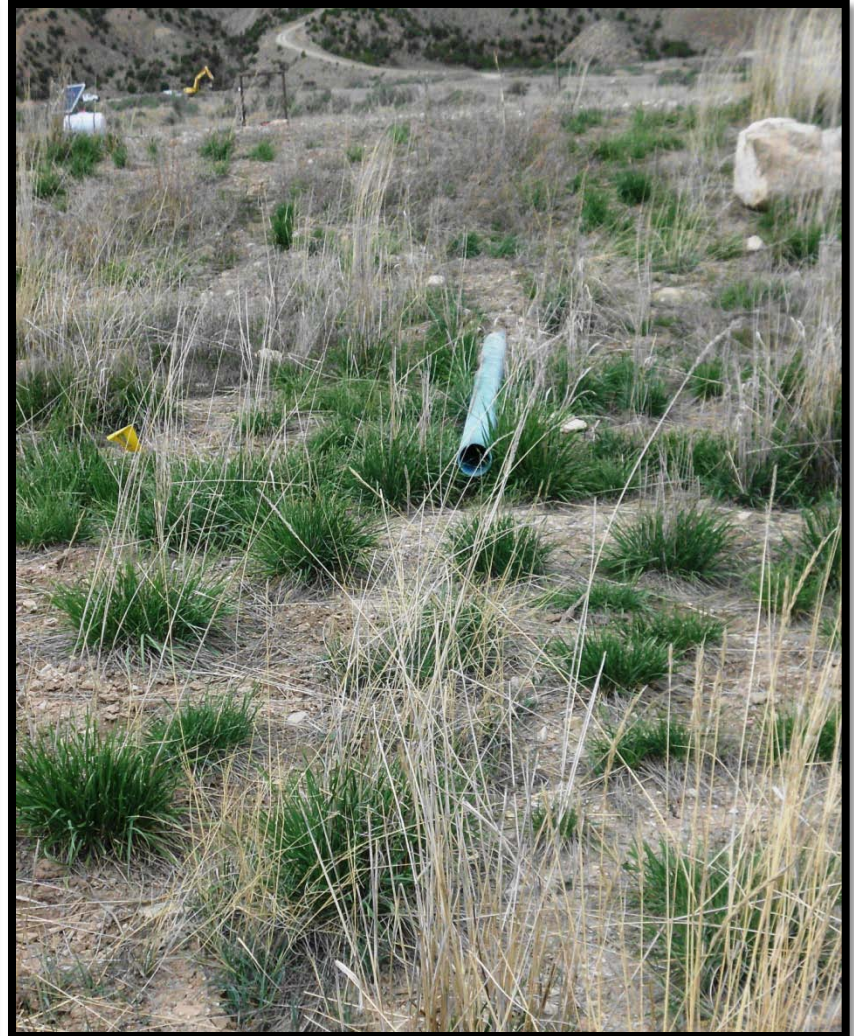


Viewing south: Stormwater collection drain & approximate orientation of subsurface piping.

April 16, 2012



Western view: Stormwater collection drain (inside corrugated culvert between wellheads).



Viewing north: Stormwater collection drain discharge outlet on downgradient slope .