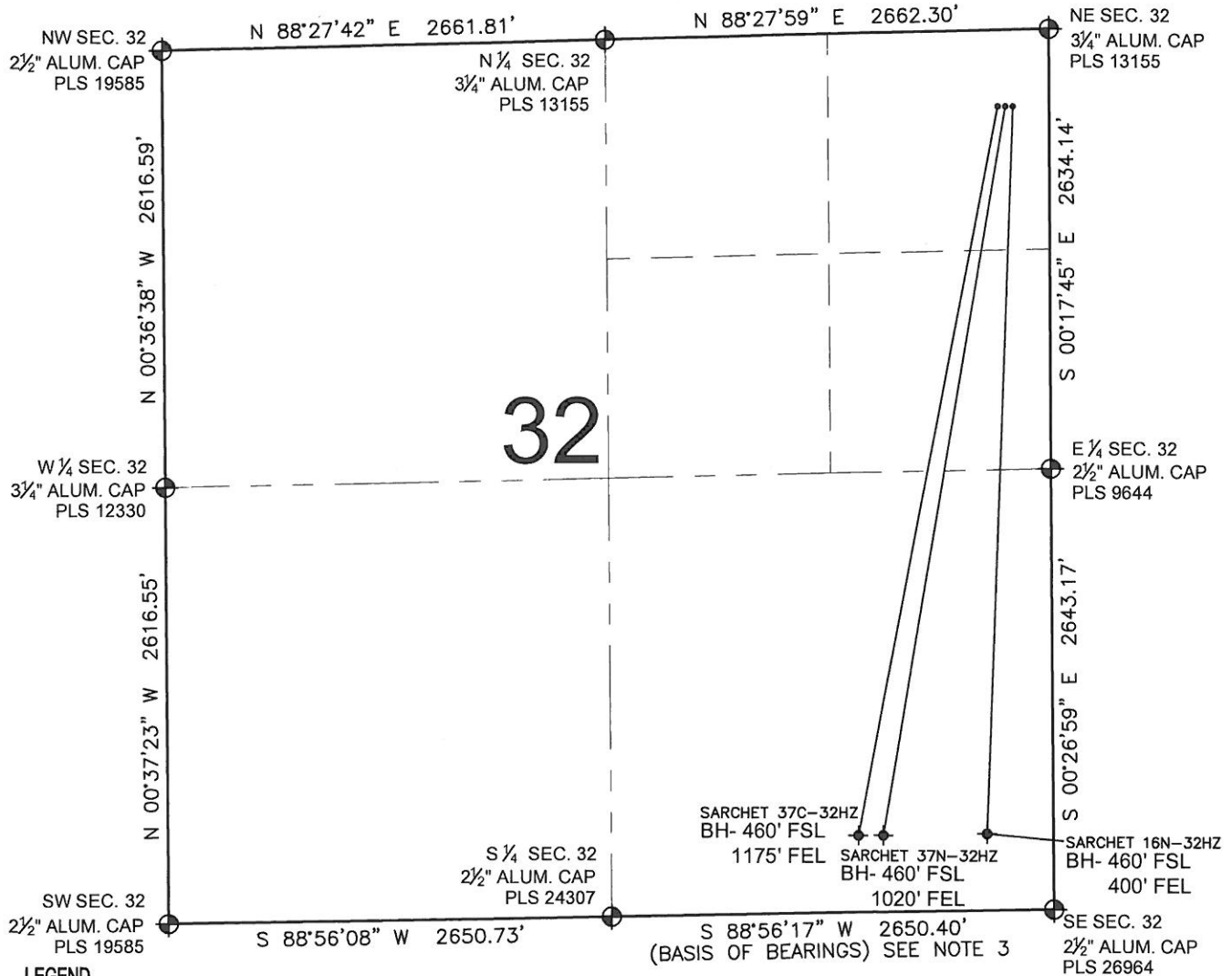


PAD DRAWING: SARCHET 3 PAD

SECTION 32, TOWNSHIP 3 NORTH, RANGE 66 WEST, 6TH P.M.



LEGEND

- ⊕ = EXISTING MONUMENT
- ⬤ = PROPOSED WELL
- ⬥ = BOTTOM HOLE
- ⬦ = EXISTING WELL
- BH= BOTTOM HOLE

NOTES:

- THIS FIELD SURVEY CONFORMS TO THE MINIMUM STANDARDS SET BY THE C.O.G.C.C., RULE NO. 215
- HORIZONTAL POSITIONS AND ORTHOMETRIC ELEVATIONS SHOWN AT THE WELL HEAD, ARE BASED ON GPS-RTK POSITIONS DERIVED FROM MINIMUM 2-HOUR STATIC OBSERVATIONS CORRECTED BY THE NATIONAL GEODETIC SURVEY ONLINE POSITIONING USER SERVICE, O.P.U.S. DATUM: HORIZONTAL = NAD83/2007, VERTICAL = NAVD88
- THE BASIS OF BEARINGS ARE STATE PLANE COORDINATE SYSTEM GRID BEARINGS SHOWN HEREON BETWEEN THE DESCRIBED THE MONUMENTS SHOWN HEREON.
- GRID DISTANCES ARE SHOWN, AS MEASURED IN THE FIELD, WITH TIES TO WELLS MEASURED PERPENDICULAR TO SECTION LINES.

NOTES:

- SARCHET 37C-32HZ TO BE AT 457' FNL, 296' FEL. BOTTOM HOLE AT 460' FSL & 1175' FEL.
- SARCHET 37N-32HZ TO BE AT 457' FNL, 266' FEL. BOTTOM HOLE AT 460' FSL & 1020' FEL.
- SARCHET 16N-32HZ TO BE AT 457' FNL, 236' FEL. BOTTOM HOLE AT 460' FSL & 400' FEL.

PREPARED BY:

PFS
Petroleum Field Services, LLC
1801 W. 13th Ave.
Denver, CO 80204

KERR-MCGEE OIL & GAS ONSHORE LP

FIELD DATE: 11-21-11	PAD NAME: SARCHET 3 PAD
DRAWING DATE: 11-22-11	SURFACE LOCATION: WELD COUNTY, COLORADO
BY: SMF	NE 1/4 NE 1/4, SEC. 32, T3N, R66W, 6TH P.M.

