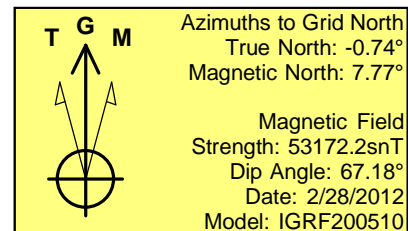
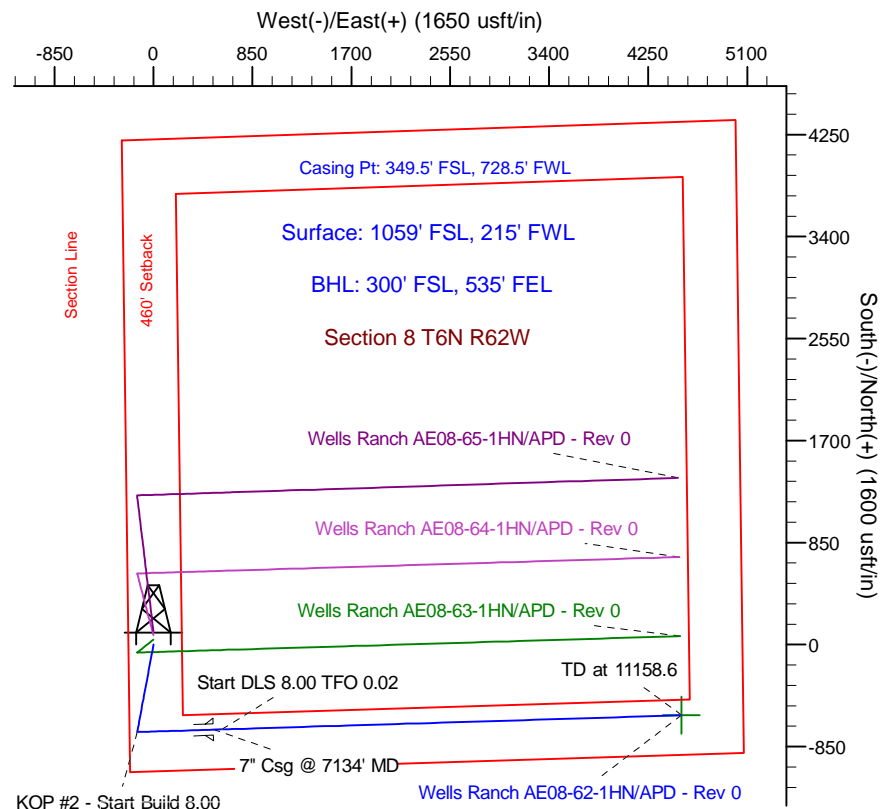
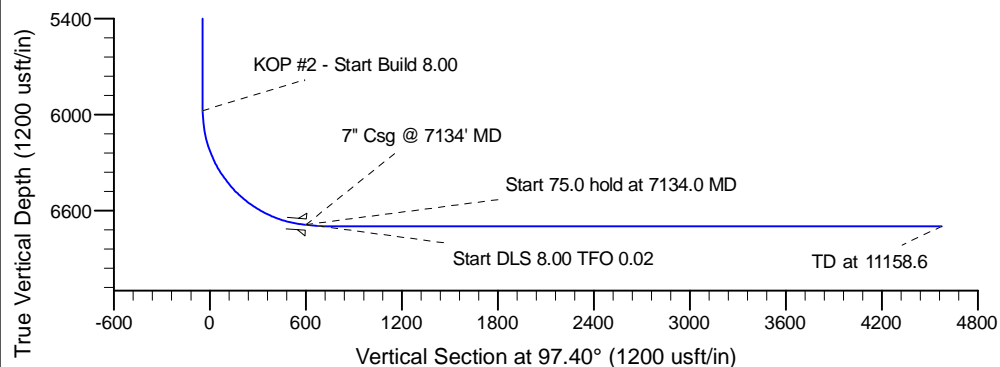
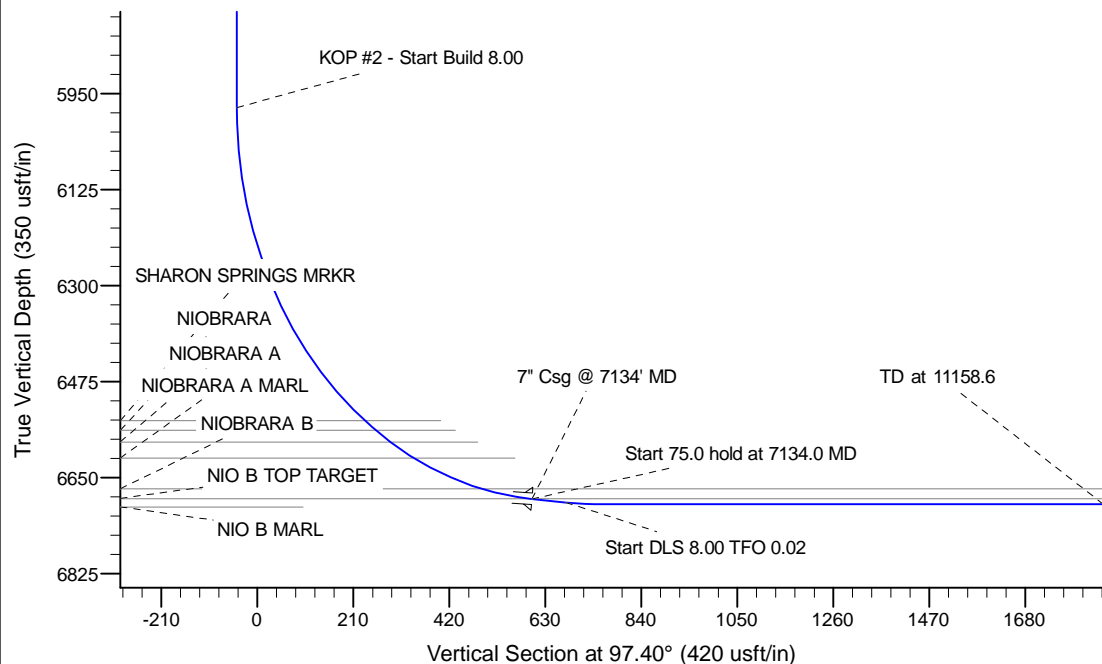


Project: Wattenberg Field
 Site: AE (Sec.8-T06N-R62W) Weld County, CO
 Well: Wells Ranch AE08-62-1HN
 Wellbore: Original Drilling
 Design: APD - Rev 0

Northern Region Drilling

Geodetic System: US State Plane 1983
 Datum: North American Datum 1983
 Ellipsoid: GRS 1980
 Zone: Colorado Northern Zone
 System Datum: Mean Sea Level

SECTION DETAILS										
Sec	MD	Inc	Azi	TVD	+N/-S	+E/-W	Dleg	TFace	VSec	Target
1	0.0	0.00	0.00	0.0	0.0	0.0	0.00	0.00	0.0	
2	1200.0	0.00	0.00	1200.0	0.0	0.0	0.00	0.00	0.0	
3	1842.5	16.06	190.87	1834.1	-87.9	-16.9	2.50	190.87	-5.4	
4	3878.8	16.06	190.87	3790.9	-641.1	-123.1	0.00	0.00	-39.5	
5	4521.3	0.00	0.00	4425.0	-729.0	-140.0	2.50	180.00	-44.9	
6	6071.5	0.00	0.00	5975.2	-729.0	-140.0	0.00	0.00	-44.9	
7	7134.0	85.00	88.29	6688.7	-709.5	513.5	8.00	88.29	600.6	
8	7209.0	85.00	88.29	6695.3	-707.3	588.2	0.00	0.00	674.4	
9	7271.5	90.00	88.29	6698.0	-705.4	650.6	8.00	0.02	736.0	
10	11158.6	90.00	88.29	6698.0	-589.6	4535.9	0.00	0.00	4574.1	Wells Ranch AE08-62-1HN BHL 330'FSL, 535'FEL



WELL DETAILS: Wells Ranch AE08-62-1HN			
Ground Level: 4929.0			
Northing	Easting	Latitude	Longitude
1425909.18	3318388.07	40.496880	-104.355150
Plan: APD - Rev 0 (Wells Ranch AE08-62-1HN/Original Drilling)			
Created By: Carrie Willers		Date: 17:53, February 28 2012	
OK to submit with 2A as per Noble Drilling			
3/1/2012 09:02			