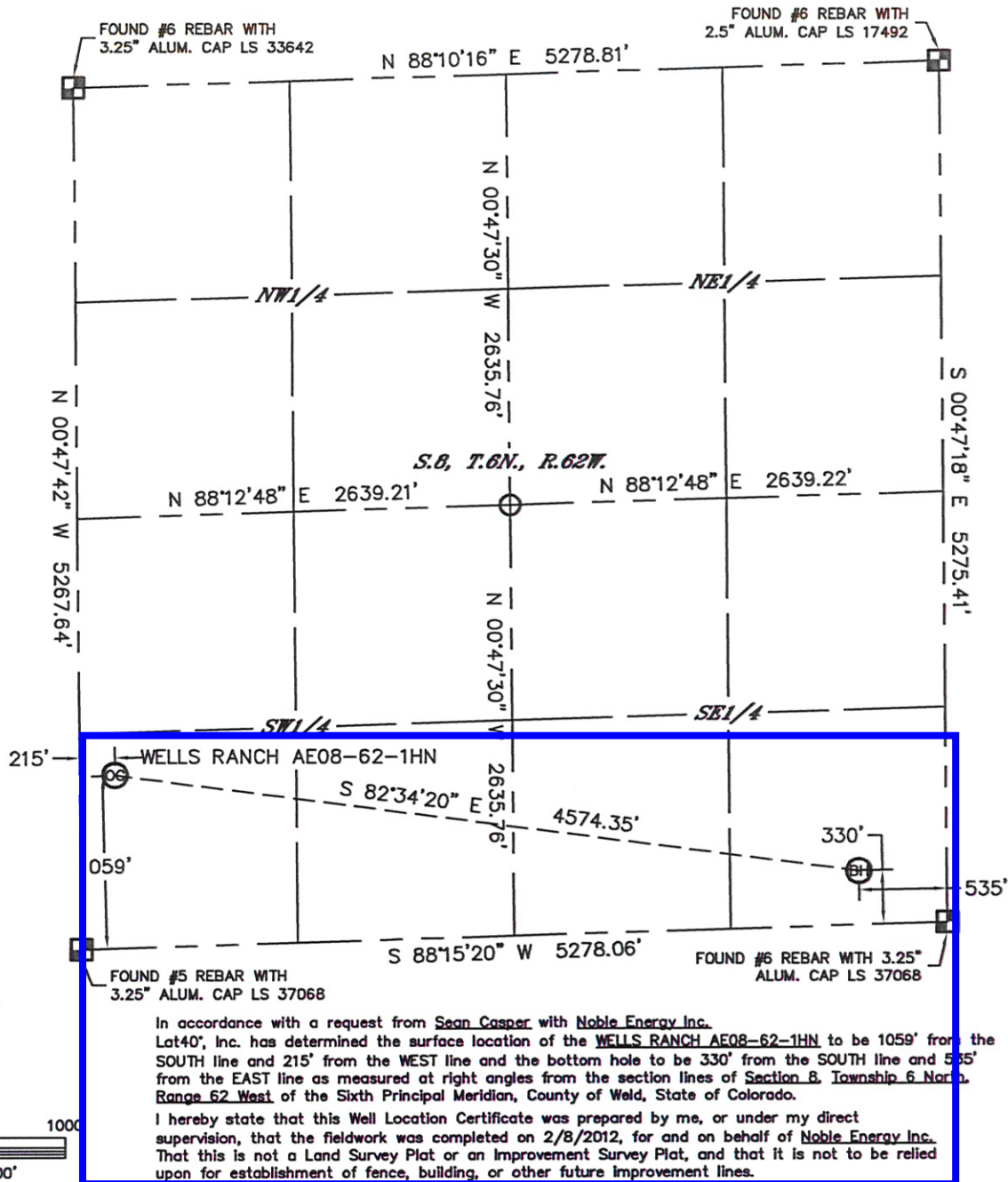


WELL LOCATION CERTIFICATE

THIS MAP DOES NOT REPRESENT A BOUNDARY SURVEY

SECTION: 8
TOWNSHIP: 6N
RANGE: 62W



NOTE:

- 1) Bearings shown are Grid Bearings of the Colorado State Plane Coordinate System, North Zone, North American Datum 1983/2007. The lineal dimensions as contained herein are based upon the "U.S. Survey Foot."
- 2) Ground elevations are based on an observed GPS elevation (NAVD 1988 DATUM).
- 3) NEAREST EXISTING WELL: NONE WITHIN SECTION
- 4) IMPROVEMENTS: See LOCATION DRAWING for all visible improvements within 400' of disturbed area.
- 5) SURFACE USE: RANGELAND
- 6) INSTRUMENT OPERATOR: WYATT HALL

SURFACE LOCATION

LAT: 40.49688°N
LONG: 104.35515°W
PDOP: 1.3
ELEV: 4929'
1/4, 1/4: SW1/4SW1/4
NEAREST PROPERTY LINE: 215' W

BOTTOM HOLE

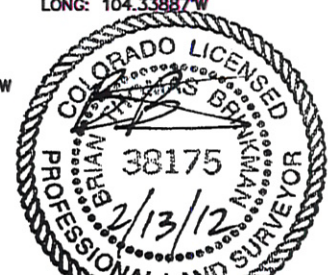
LAT: 40.49510°N
LONG: 104.33887°W

NOTE

According to Colorado law, you must commence any legal action based upon any defect in this W.L.C. within three years after you discover such defect. In no event, may any action based upon any defect in this survey be commenced more than ten years after the date of the certificate shown hereon. (13-80-105 C.R.S.)

LEGEND

- = ALIQUOT MONUMENT AS DESCRIBED
○ = CALCULATED POSITION



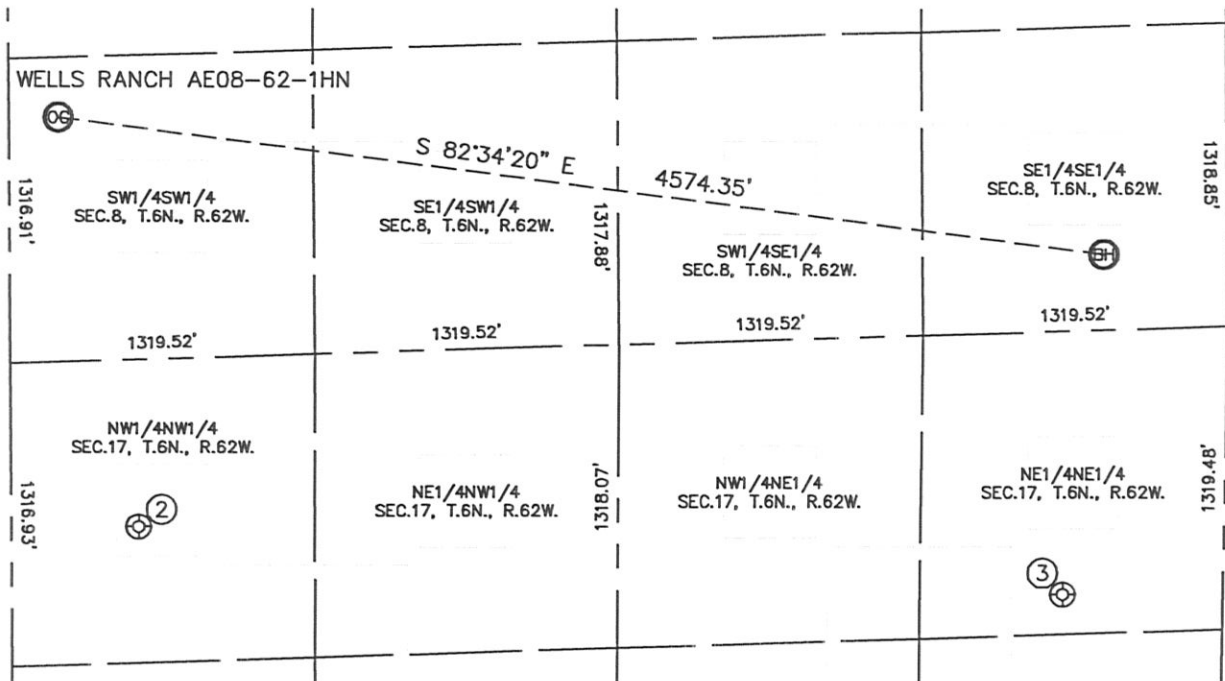
Brian T. Brinkman—On behalf of Lat40°, Inc.
Colorado Licensed Professional Land Surveyor No. 38175
DATE: 2/8/2012
PROJECT#: 2012028

Lat40°, Inc. 1635 Foxtrail Drive, Suite 325 Loveland, CO 970-776-3321

SITE SKETCH

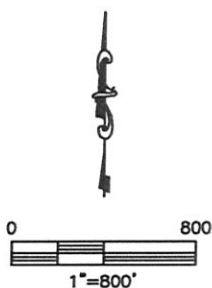
WELLS RANCH AE08-62-1HN

SECTION: 8
TOWNSHIP: 6N
RANGE: 62W



②
DEGENHART USX
AE17-04
NW1/4NW1/4
724' FNL
551' FWL
LAT-40.49201°N
LONG-104.35394°W
PDOP:1.1
ELEV: 4917'

③
DEGENHART USX
AE17-99HZ
NE1/4NE1/4
1144' FNL
693' FEL
LAT-40.49105°N
LONG-104.33956°W
PDOP:1.9
ELEV: 4925'



DATE: 2/8/2012
PROJECT#: 2012028