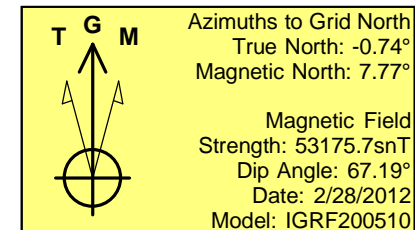
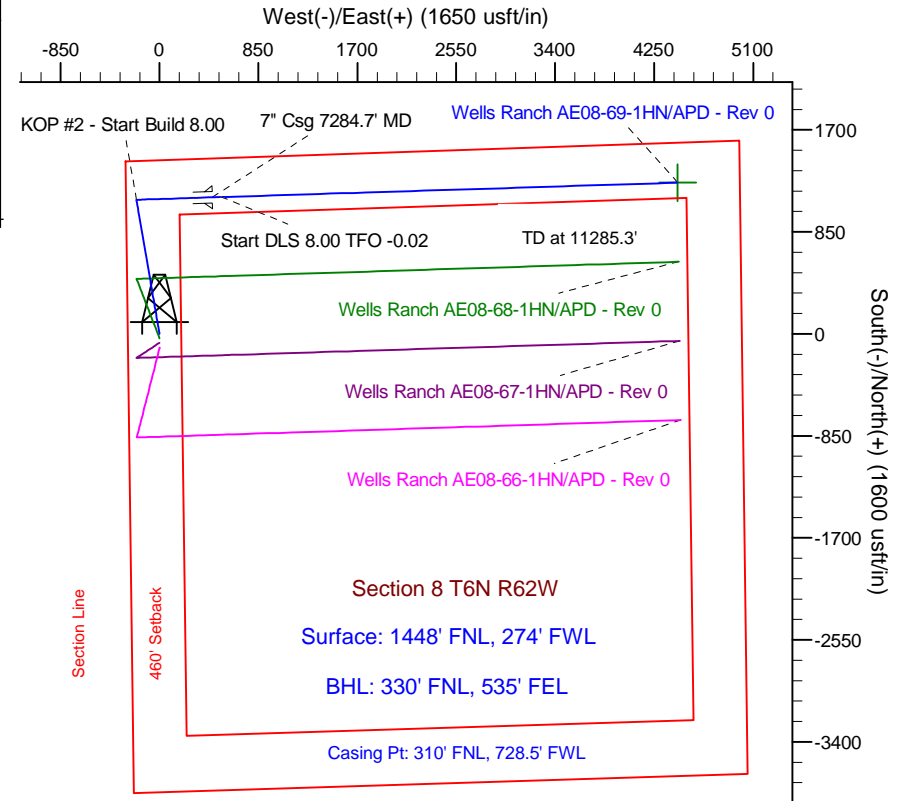
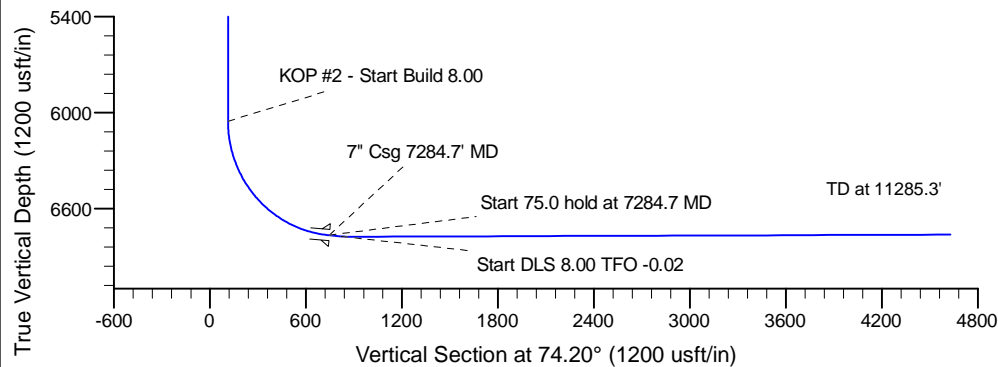
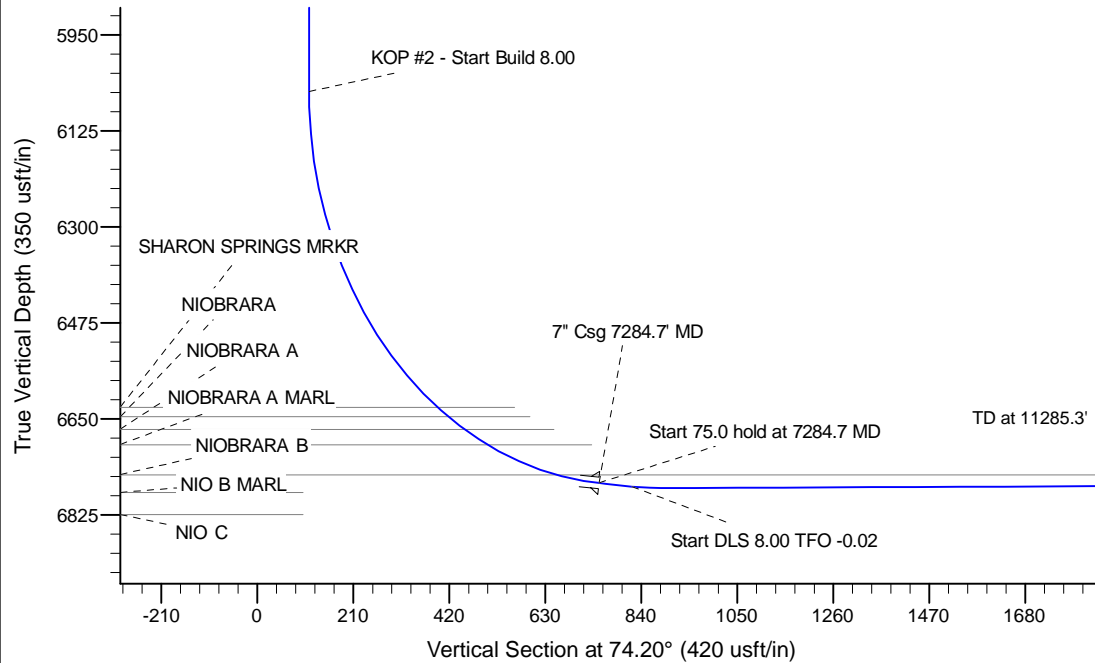


Project: Wattenberg Field
 Site: AE (Sec.8-T06N-R62W) Weld County, CO
 Well: Wells Ranch AE08-69-1HN
 Wellbore: Original Drilling
 Design: APD - Rev 0

Northern Region Drilling

Geodetic System: US State Plane 1983
 Datum: North American Datum 1983
 Ellipsoid: GRS 1980
 Zone: Colorado Northern Zone
 System Datum: Mean Sea Level

SECTION DETAILS										
Sec	MD	Inc	Azi	TVD	+N/-S	+E/-W	Dleg	TFace	VSec	Target
1	0.0	0.00	0.00	0.0	0.0	0.0	0.00	0.00	0.0	
2	1000.0	0.00	0.00	1000.0	0.0	0.0	0.00	0.00	0.0	
3	1725.1	18.13	349.91	1713.0	112.0	-19.9	2.50	349.91	11.3	
4	4643.9	18.13	349.91	4487.0	1006.0	-179.1	0.00	0.00	101.7	
5	5368.9	0.00	0.00	5200.0	1118.0	-199.0	2.50	180.00	113.0	
6	6222.2	0.00	0.00	6053.3	1118.0	-199.0	0.00	0.00	113.0	
7	7284.7	85.00	88.25	6766.7	1138.0	454.5	8.00	88.25	747.2	
8	7359.7	85.00	88.25	6773.3	1140.2	529.2	0.00	0.00	819.7	
9	7424.6	90.20	88.25	6776.0	1142.2	594.0	8.00	-0.02	882.6	
10	11285.3	90.20	88.25	6762.8	1260.3	4452.8	0.00	0.00	4627.7	Wells Ranch AE08-69-1HN BHL 330'FNL, 535'FEL



WELL DETAILS: Wells Ranch AE08-69-1HN			
Ground Level: 4988.0			
Northing	Easting	Latitude	Longitude
1428671.11	3318408.04	40.504460	-104.354950
Plan: APD - Rev 0 (Wells Ranch AE08-69-1HN/Original Drilling)			
Created By: Carrie Willers		Date: 17:05, February 29 2012	
OK to submit with 2A as per Noble Drilling			
3/1/2012 09:12			