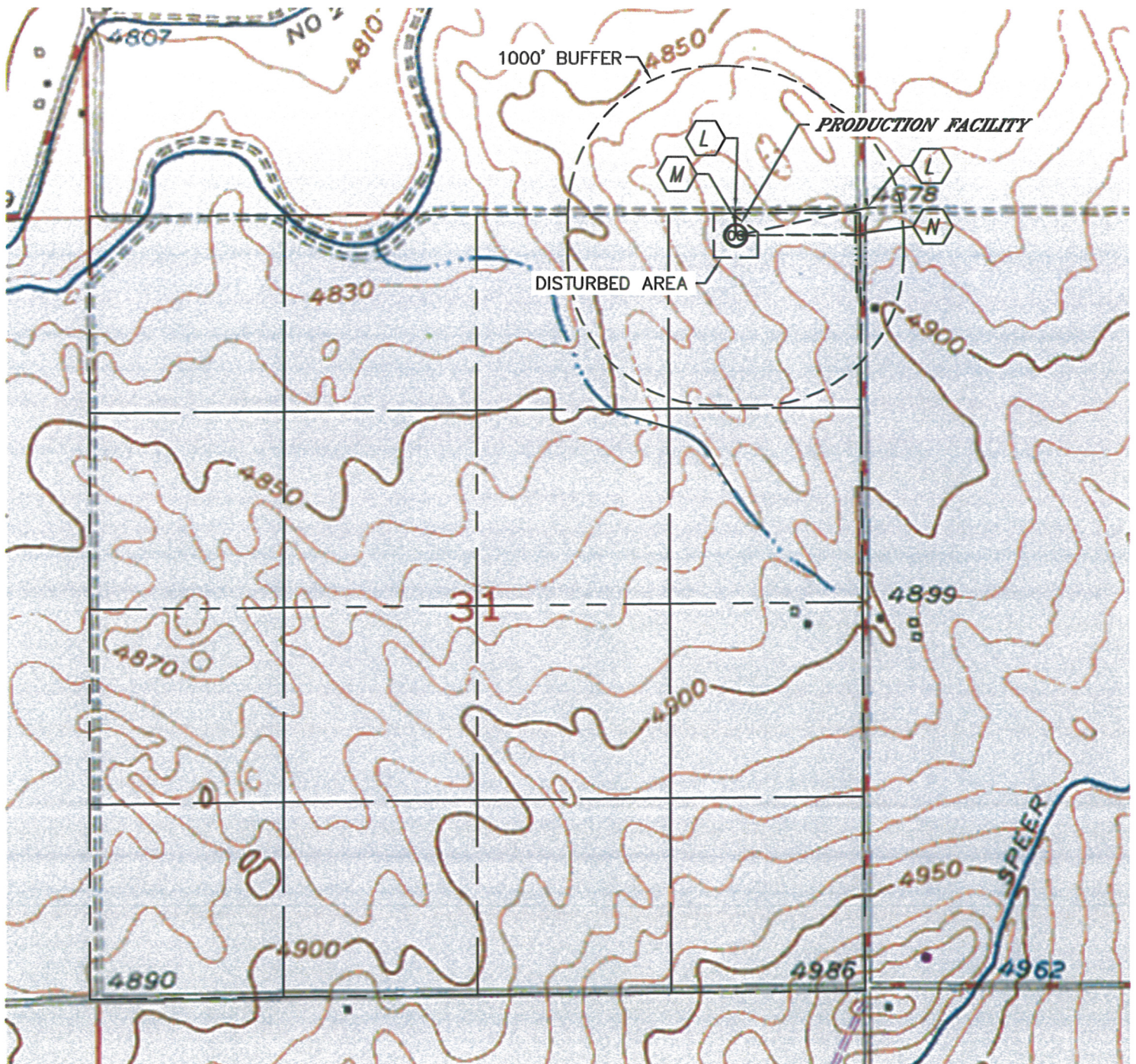





Lat40°, Inc. 1635 Foxtrail Drive, Suite 325 Loveland, CO 970-776-3321

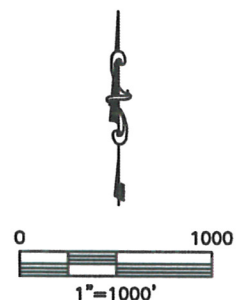
# PRODUCTION FACILITY HYDROLOGY MAP

RURAL LAND PC G31-27D, 28D, G32-30D, 31D

SECTION: 31  
TOWNSHIP: 4N  
RANGE: 65W



-  DITCH 174' N, 922' NE
-  PONDING AREA 119' N
-  BARROW DITCH 821' & 889' E



DATE: 1/13/2012  
PROJECT#: 2011313