

---

# **OXY GRAND JUNCTION EBUSINESS**

---

**CC 697-16-15A  
Parachute  
Garfield County , Colorado**

**Squeeze Perfs  
14-Nov-2011**

## **Post Job Summary**

# HALLIBURTON

## Cementing Job Log

*The Road to Excellence Starts with Safety*

The Road to Excellence Starts With Safety			
Sold To #: 344034	Ship To #: 2578468	Quote #:	Sales Order #: 9061861
Customer: OXY GRAND JUNCTION EBUSINESS		Customer Rep: McKinney, Ken	
Well Name: CC		Well #: 697-16-15A	API/UWI #: 05-045-13990
Field: GRAND VALLEY	City (SAP): PARACHUTE	County/Parish: Garfield	State: Colorado
Legal Description:			
Lat: N 39.527 deg. OR N 39 deg. 31 min. 37.416 secs.		Long: W 108.217 deg. OR W -109 deg. 47 min. 0.384 secs.	
Contractor: WORKOVER		Rig/Platform Name/Num: WORKOVER	
Job Purpose: Squeeze Perfs			Ticket Amount:
Well Type: Development Well		Job Type: Squeeze Perfs	
Sales Person: HIMES, JEFFREY		Srvc Supervisor: NICKLE, RYON	MBU ID Emp #: 454759

Activity Description	Date/Time	Cht #	Rate bbl/min	Volume bbl		Pressure psig		Comments
				Stage	Total	Tubing	Casing	
Arrive at Location from Other Job or Site	11/14/2011 08:00							UPON ARRIVAL SECOND WORKOVER RIG GETTING GAS TO SURFACE, OPERATIONS ON PRIMARY WORKOVER RIG STOPPED AND WAITING FOR SECOND RIG TO CONTROL WELL.
Assessment Of Location Safety Meeting	11/14/2011 08:10							ALL HES PERSONEL, UPON HES ARRIVAL RIG CREW HAD JUST SHEERED CIBP FROM STINGER AND DROPPED DOWN THE 4.5 CASING. TD WAS TAGGED AND ANOTHER CIBP WAS BROUGHT TO LOCATION TO RESUME JOB AS PLANNED.
Other	11/14/2011 08:35							SPOT EQUIPMENT
Pre-Rig Up Safety Meeting	11/14/2011 08:50							ALL HES PERSONEL
Rig-Up Equipment	11/14/2011 09:00							
Pre-Job Safety Meeting	11/14/2011 09:30							ALL HES PERSONEL AND RIG CREW
Start Job	11/14/2011 09:55							CIBP- 7405, CIBP-6950, TOP PERFS -7270, BOTTOM PERFS- 7322, CSG 4.5 11.6# N-80, TUB- 2 3/8 4.7# L-80, WF -8.6

Sold To #: 344034

Ship To #: 2578468

Quote #:

Sales Order #:

9061861

SUMMIT Version: 7.2.27

Thursday, December 01, 2011 02:34:00



# HALLIBURTON

## Cementing Job Log

Activity Description	Date/Time	Cht #	Rate bbl/min	Volume bbl		Pressure psig		Comments
				Stage	Total	Tubing	Casing	
Other	11/14/2011 09:55							CLEAR/ FILL TUBING
Pressure Test	11/14/2011 09:57							6500 PSI, PRESSURE TESTED TUBING SIDE AND BACKSIDE AT THE SAME TIME
Injection Test	11/14/2011 10:02							
Other	11/14/2011 10:07							BLEED OFF PRESSURE TO BACKSIDE
Injection Test	11/14/2011 10:07							STING IN AND ESTABLISH INJECTION TEST. THE FASTER WE PUMPED THE MORE THE FORMATION TOOK.
Other	11/14/2011 10:25							BLEED OFF PRESSURE
End Job	11/14/2011 10:26							COMPLETED INJECTION TEST SERIES 1, RIG TO PULL TUBING OUT OF HOLE, WIRELINE TO PERF WELL, RIG TO RUN TUBING DOWN HOLE AND SET RETAINER
Start Job	11/14/2011 17:17							BEGIN INJECTION TEST SERIES 2, WELL HAS BEEN PERFORATED AND RIG HAS COMPLETED SETTING THE RETAINER
Other	11/14/2011 17:17							FILL LINES
Pressure Test	11/14/2011 17:18							4300 PSI, PRESSURE TESTED TUBING AND BACKSIDE AT THE SAME TIME
Injection Test	11/14/2011 17:24		3	10		730.0		
ISIP	11/14/2011 17:31							
Injection Test	11/14/2011 17:34		3	10		680.0		
ISIP	11/14/2011 17:38							



# HALLIBURTON

## Cementing Job Log

Activity Description	Date/Time	Cht #	Rate bbl/ min	Volume bbl		Pressure psig		Comments
				Stage	Total	Tubing	Casing	
End Job	11/14/2011 17:39							
Pre-Rig Down Safety Meeting	11/14/2011 17:45							ALL EQUIPMENT AND LINES DISCONNECTED AND BLOWN DOWN, PRESSURE BLEED OFF OF BULK EQUIPMENT. PER COMPANY REP, CREW WILL RETURN THE FOLLOWING MORNING AND COMPLETE THE CEMENT PUMPING PORTION OF THE JOB
Pre-Convoy Safety Meeting	11/14/2011 18:30							
Arrive At Loc	11/15/2011 06:20							
Assessment Of Location Safety Meeting	11/15/2011 07:09							REVIEW LOCATION AND SAFFETY STANDARDS WITH NEW HES PERSONEL
Pre-Rig Up Safety Meeting	11/15/2011 07:09							ALL HES PERSONEL
Rig-Up Equipment	11/15/2011 07:15							RECONNECT IRON, CHECKING EACH LINE FOR FLOW USING AIR HOSE
Pre-Job Safety Meeting	11/15/2011 08:00							ALL HES PERSONEL, RIG CREW AND THIRD PARTY
Start Job	11/15/2011 08:24							CIBP- 7405, CIGR-6950, TOP PERFS -7270, BOTTOM PERFS- 7322, CSG 4.5 11.6# N-80, TUB- 2 3/8 4.7# L-80, WF -8.6
Other	11/15/2011 08:25							CLEAR/ FILL TUBING
Pressure Test	11/15/2011 08:28							4480 PSI, PRESSURE TESTED TUBING SIDE AND BACKSIDE AT THE SAME TIME
Activity Description	Date/Time	Cht #	Rate bbl/ min	Volume bbl		Pressure psig		Comments
				Stage	Total	Tubing	Casing	



# HALLIBURTON

## Cementing Job Log

Injection Test	11/15/2011 08:41							STING IN AND ESTABLISH INJECTION TEST. THE FASTER WE PUMPED THE MORE THE FORMATION TOOK.
Shutdown	11/15/2011 08:49							
Pump Cement	11/15/2011 08:56		2	23.5		720.0		CEMENT; 15.5 LB/GAL, 1.2 FT3/SK, 5.32 GAL/SK, 110 SKS
Pump Displacement	11/15/2011 09:10		2	23		755.0		
Shutdown	11/15/2011 09:28							
Other	11/15/2011 10:03		2	0.25		740.0		START HESITATION
Shutdown	11/15/2011 10:06							
Other	11/15/2011 10:21		2	0.25		500.0		HESITATE
Shutdown	11/15/2011 10:23							
Other	11/15/2011 10:35		2	0.25		480.0		HESITATE
Shutdown	11/15/2011 10:37							
Other	11/15/2011 11:03		2	0.25		460.0		HESITATE
Shutdown	11/15/2011 11:05							
Other	11/15/2011 11:40		2	0.25		430.0		HESITATE
Shutdown	11/15/2011 11:43							
Other	11/15/2011 12:28		2	50				PER COMPANY REP REQUEST PERFS TO BE FLUSHED WITH 50 BBL H2O
Shutdown	11/15/2011 12:35							
End Job	11/15/2011 12:37							
Pre-Rig Down Safety Meeting	11/15/2011 12:51							
Activity Description	Date/Time	Cht #	Rate bbl/ min	Volume bbl		Pressure psig		Comments
				Stage	Total	Tubing	Casing	

# HALLIBURTON

## Cementing Job Log

Rig-Down Equipment	11/15/2011 13:05						RIG DOWN IRON AND BLOW DOWN ELITE 7, ELITE 7 TO BE LEFT ON LOCATION OVERNIGHT AND CREW TO RETURN NEXT DAY TO ATTEMPT TO SQUEEZE WELL AGAIN
Pre-Convoy Safety Meeting	11/15/2011 13:50						CREW TO LEAVE LOCATION AND RETURN THE NEXT DAY TO ATTEMPT SECOND SQUEEZE PER COMPANY REP
Call Out	11/16/2011 02:00						
Depart Yard Safety Meeting	11/16/2011 03:50						ATTENDED BY ALL HES CREW
Crew Leave Yard	11/16/2011 04:00						
Arrive At Loc	11/16/2011 06:00						
Assessment Of Location Safety Meeting	11/16/2011 06:10						ATTENDED BY ALL HES CREW
Other	11/16/2011 06:20						SPOT EQUIPMENT
Pre-Rig Up Safety Meeting	11/16/2011 06:30						
Rig-Up Equipment	11/16/2011 06:40						
Pump Cement	11/16/2011 06:55		1.5	20.3		450.0	66 SKS MIXED AT 15.5 PPG, 1.2 YIELD, 5.32 GL/SK, CEMENT MIXED BY USING MIX WATER VOLUME
Pre-Job Safety Meeting	11/16/2011 07:40						ATTENDED BY ALL HES CREW, RIG CREW AND COMPANY REP
Other	11/16/2011 08:10		5	10			FILL LINES
Start Job	11/16/2011 08:10						
Test Lines	11/16/2011 08:31		2	15		770.0	PRESSURED UP TO 4260 PSI, PRESSURE HELD
Injection Test	11/16/2011 08:37					4.0	PRESSURE SPIKED TO 770 PSI, PRESSURE LINED OUT AT 330 PSI
Activity Description	Date/Time	Cht	Rate bbl/ min	Volume bbl		Pressure psig	Comments

Sold To # : 344034

Ship To # :2578468

Quote # :

Sales Order # :

9061861

SUMMIT Version: 7.2.27

Thursday, December 01, 2011 02:34:00



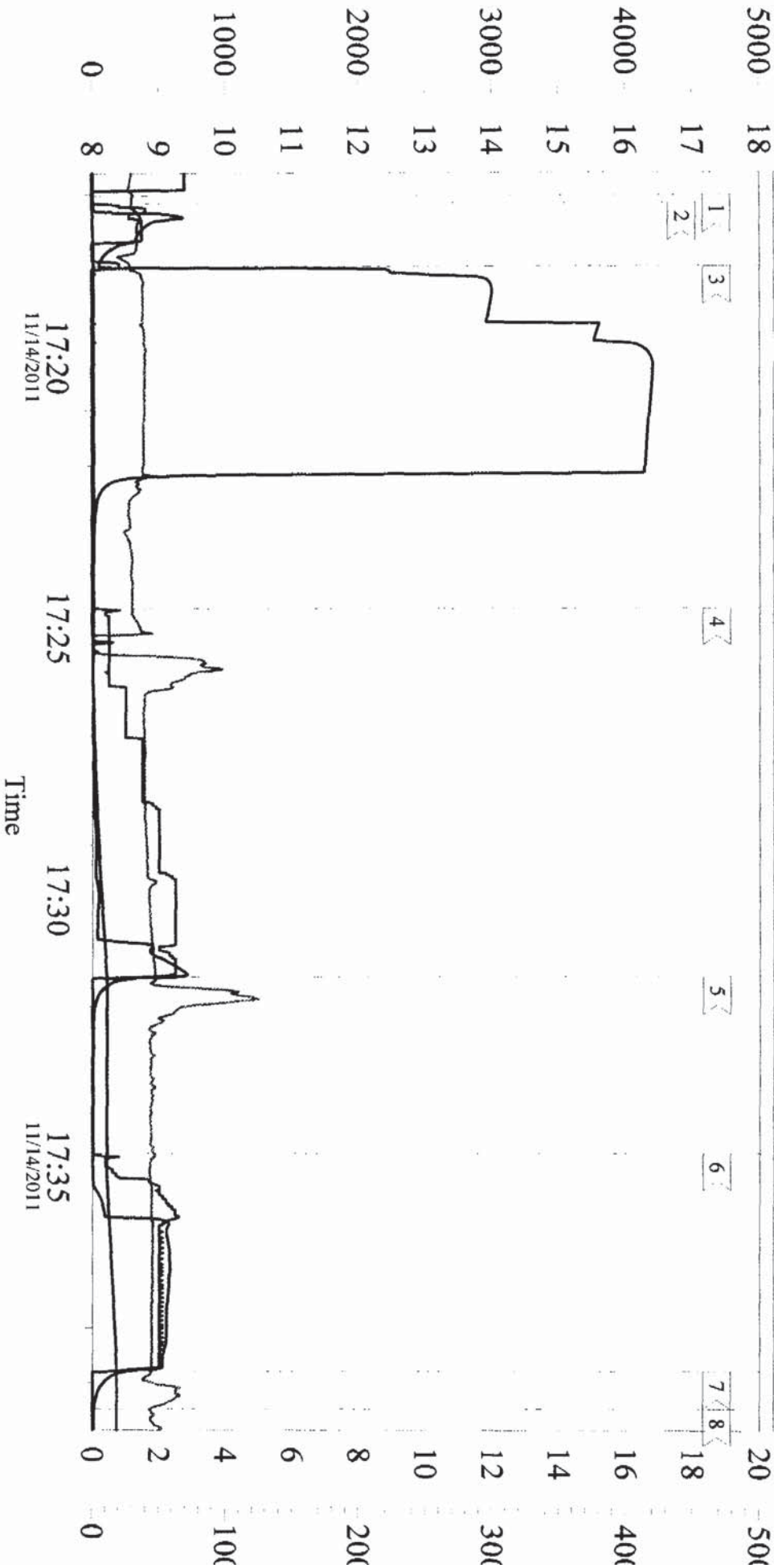
# HALLIBURTON

## Cementing Job Log

		#		Stage	Total	Tubing	Casing	
Pump Displacement	11/16/2011 09:11		1.5	26.3		740.0		PRODUCTION WATER VOLUME MEASURED BY DISPLACEMENT TANK MARKS
Comment	11/16/2011 09:31							DUE TO VACCUUM FROM CEMENT IN TUBING ELILTE PUMPS LIST PRIME
Shutdown	11/16/2011 09:41					21.0		HESITATE AT COMPANY REP'S REQUEST
Resume Squeeze	11/16/2011 10:28		0.5	0.25		720.0		
Shutdown	11/16/2011 10:29					115.0		
Resume Squeeze	11/16/2011 11:08		0.5	0.25		926.0		
Shutdown	11/16/2011 11:08							
Resume Squeeze	11/16/2011 11:50		0.25	0.25		983.0		
Shutdown	11/16/2011 11:50							
Other	11/16/2011 11:58					902.0		RIG STING OUT
End Job	11/16/2011 11:59							

# OXY - CC 697-16-15A INJECTION TEST

S1 Pass-Side Pump Pressure (psi) \_\_\_\_\_ A S1 Downhole Density (lb/gal) \_\_\_\_\_ B  
S1 Combined Pump Rate (bpm) \_\_\_\_\_ C S1 Pump Stage Total (bbl) \_\_\_\_\_ D



## Local Event Log

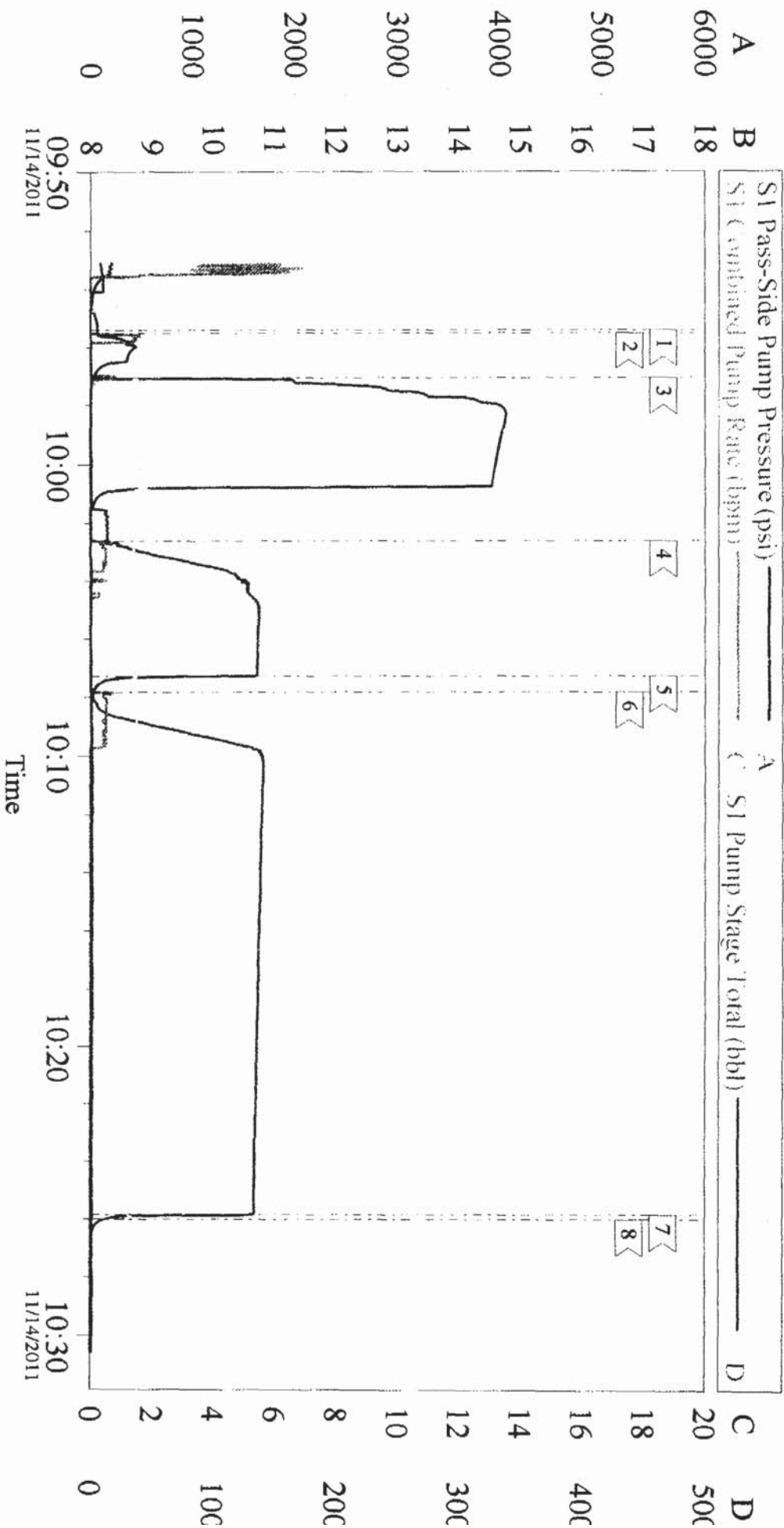
1 START JOB	17:17:02	2 FILL LINES	17:17:10	3 PRESSURE TEST	17:18:21
4 START INJECTION TEST	17:24:39	5 ISIP	17:31:28	6 START INJECTION TEST	17:34:46
7 ISIP	17:38:47	8 END JOB	17:39:29		

Customer: OXY Job Date: 14-Nov-2011 Sales Order #: 90061861  
Well Description: CC 697-16-15A Job Type: INJECTION TEST ADC Used: NO  
Company Rep: MIKE DECKER Cement Supervisor: RYON NICKLE Elite # / Operator: E7 / BRENT BANKS



# OXY - CC 697-16-15A

## SQUEEZE

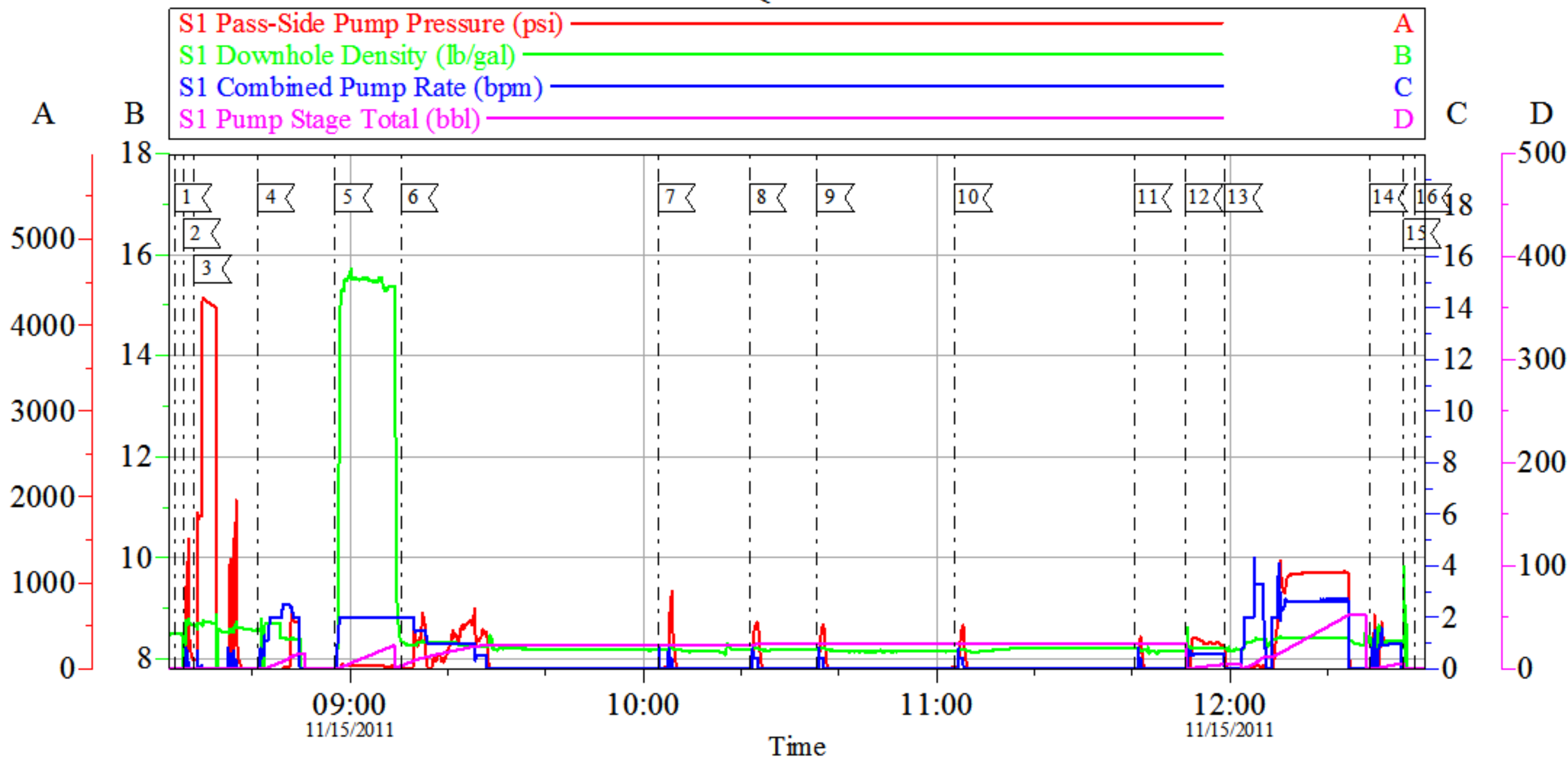


Local Event Log			
1 START JOB	09:55:24	2 FILL LINES	09:55:30
3 PRESSURE TEST	09:57:04	4 INJECTION TEST	10:02:37
5 BLEED PRESSURE TO BACKSIDE	10:07:18	6 INJECTION TEST	10:07:51
7 BLEED OFF PRESSURE	10:25:51	8 END JOB	10:26:01

Customer:	OXY GRAND JUNCTION EBU/SINNESS	Job Date:	14-Nov-2011	Sales Order #:	9061861
Well Description:	CC 697-16-15A	Job Type:	SQUEEZE	ADC Used:	NO
Company Rep:	MIKE DECKER	Cement Supervisor:	RYON NICKLE	Elite # / Operator:	#7 / ERIC CARTER

# OXY - CC 697-16-15A

## SQUEEZE



Local Event Log								
1	START JOB	08:24:04	2	FILL LINES	08:25:52	3	PRESSURE TEST	08:28:04
4	INJECTION TEST	08:41:06	5	PUMP CEMENT	08:56:59	6	PUMP DISPLACEMENT	09:10:24
7	START HESITATION	10:03:01	8	HESITATE	10:21:39	9	HESITATE	10:35:30
10	HESITATE	11:03:48	11	HESITATE	11:40:32	12	FLUSH PERFS	11:50:59
13	SHUTDOWN	11:58:59	14	FLUSH PERFS	12:28:43	15	SHUTDOWN	12:35:31
16	END JOB	12:37:45						

Customer: OXY  
Well Description: CC 697-16-15A  
Company Rep: MIKE DECKER

Job Date: 15-Nov-2011  
Job Type: SQUEEZE  
Cement Supervisor: RYON NICKLE

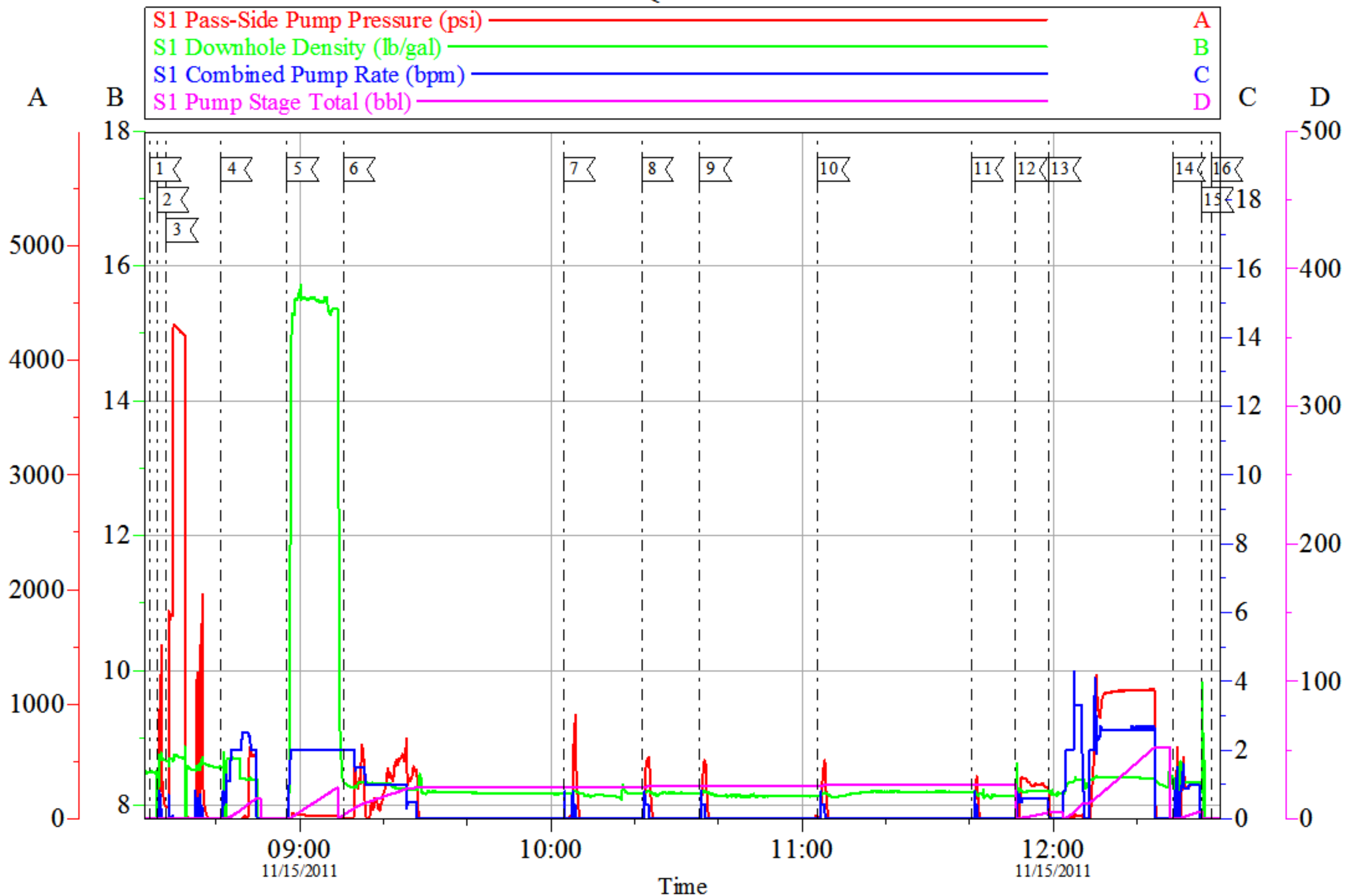
Sales Order #: 9061861  
ADC Used: YES  
Elite # / Operator: #7 / RYAN MUHLESTEIN

OptiCem v6.4.10  
25-Nov-11 14:41



# OXY - CC 697-16-15A

SQUEEZE



Customer: OXY  
Well Description: CC 697-16-15A  
Company Rep: MIKE DECKER

Job Date: 15-Nov-2011  
Job Type: SQUEEZE  
Cement Supervisor: RYON NICKLE

Sales Order #: 9061861  
ADC Used: YES  
Elite # / Operator: #7 / RYAN MUHLESTEIN

OptiCem v6.4.10  
25-Nov-11 14:42