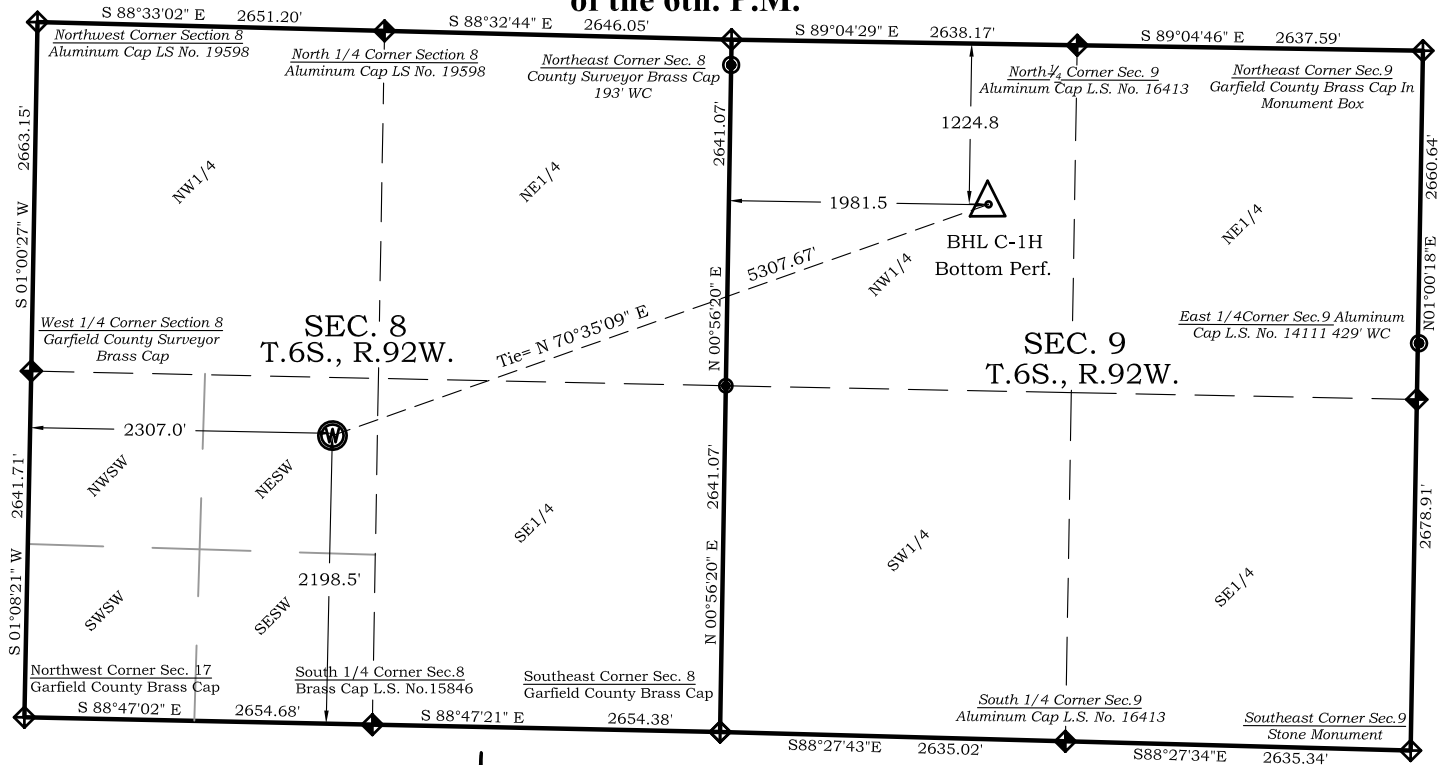


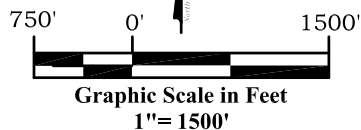
River Ranch C-1H Well Location Plat

Section 8, Township 6 South, Range 92 West
of the 6th. P.M.



Legend

- ◆ - Field Surveyed Section Corner
- ◆ - Field Surveyed Quarter Corner
- - Calculated Section Corner Location
- ◆ - Field Surveyed 1/6 Corner



Prepared For Antero Resources:

Proposed River Ranch C-1H Well Situate in The NE 1/4 SW 1/4 Section 8,
Township 6 South, Range 92 West of the 6th. Principal Meridian, County of
Garfield, State of Colorado

SURVEYOR'S CERTIFICATE

I, SCOTT E. AIBNER, A REGISTERED LAND SURVEYOR, LICENSED UNDER THE LAWS OF THE STATE OF COLORADO DO HEREBY CERTIFY THAT THE SURVEY SHOWN HEREON WAS PREPARED BY RIVER VALLEY SURVEY, INC., FOR ANTERO RESOURCES, BY ME OR UNDER MY DIRECT SUPERVISION AND HAS BEEN STAKED ON THE GROUND AS SHOWN ON THE PLAT AND THAT THIS PLAT IS A TRUE REPRESENTATION THEREOF.

SCOTT E. AIBNER
PROFESSIONAL LAND SURVEYOR
31143

BY:
SCOTT E. AIBNER, COLORADO REG. NO. 31143

Bottom Hole:

River Ranch C-1H

1225' FNL

1982' FWL

NAD83

Lat: 39.545174333°N

Long: 107.674410855°W

NAD27

Lat: 39.545193801°N

Long: 107.673795100°W

Surface:

River Ranch C-1H

2199' FSL

2307' FWL

Gnd El= 5384.3

Pad El= 5384.3

NAD83

Lat: 39.539924579°N

Long: 107.691961780°W

NAD27

Lat: 39.539944064°N

Long: 107.691345448°W

UTM 13 NORTH

NAD 1983

NORTHING

14370563.354

EASTING

881441.651

Notes:

1. LATITUDE AND LONGITUDE COORDINATES ARE DIFFERENTIALLY CORRECTED AND BASED ON PUBLISHED NGS CONTROL STATION "WDP-5". SYSTEM: UTM ZONE: 13 NORTH DATUM: NAD 1983 (CONUS)
2. ELEVATIONS ARE BASED ON NAVD OF 1929.
3. ALL BOTTOM AND TOP HOLE LOCATIONS ARE MEASURED 90 DEGREES FROM SECTION LINE.
4. USGS QUADRANGLE MAP "SILT COLORADO".
5. CURRENT SURFACE LAND USE: GAS PAD.
6. PDOP AT THE TIME OF LOCATION OF SURFACE WELL = 2.5



River Valley Survey, Inc.
110 East 3rd. Street, Suite 213
Rifle, Colorado 81650
Ph: 970-379-7846

Project: River Ranch C Pad Proj. No. 06001-52

Field Date: 03-23-12

Scale: 1" = 1500'

Date: 04-18-12

Sheet: 1 of 12

Well Location Plat
Prepared For Antero Resources

Situate In:
NE 1/4 SW 1/4 Section 8, T6S., R. 92 W.
of the 6th P.M., Garfield County,
Colorado

