

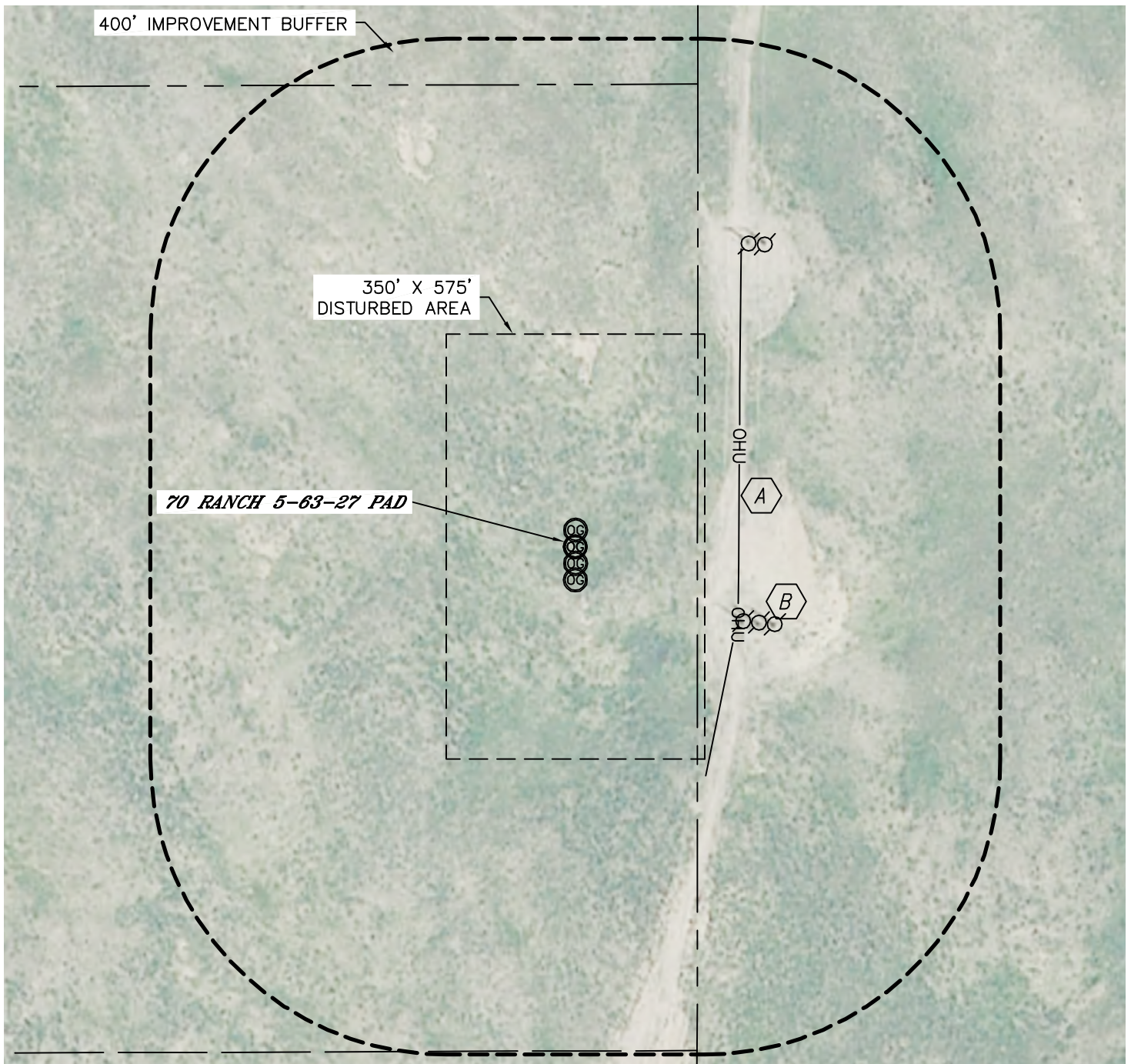


Lat40°, Inc. 1635 Foxtrail Drive, Suite 325 Loveland, CO 970-776-3321

LOCATION DRAWING

70 RANCH 5-63-27-32H, 33H, 48H, 49H

SECTION: 27
TOWNSHIP: 5N
RANGE: 63W



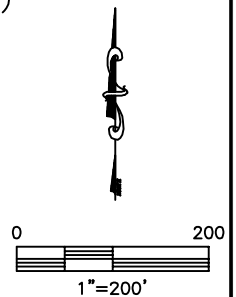
IMPROVEMENTS:
(MEASURED FROM THE PROPOSED 70 RANCH 5-63-27-33H LOCATION)



OVERHEAD UTILITY 221' E



POWER POLES 473' NE, 248' SE



NEAREST: BUILDING 1580' SE, PUBLIC ROAD (CR 69) 1950' SE,
ABOVE GROUND UTILITY 221' E, RAILROAD 5280'+, PROPERTY LINE 165' E

REV. 2-1-2012
PROJECT#: 2011312

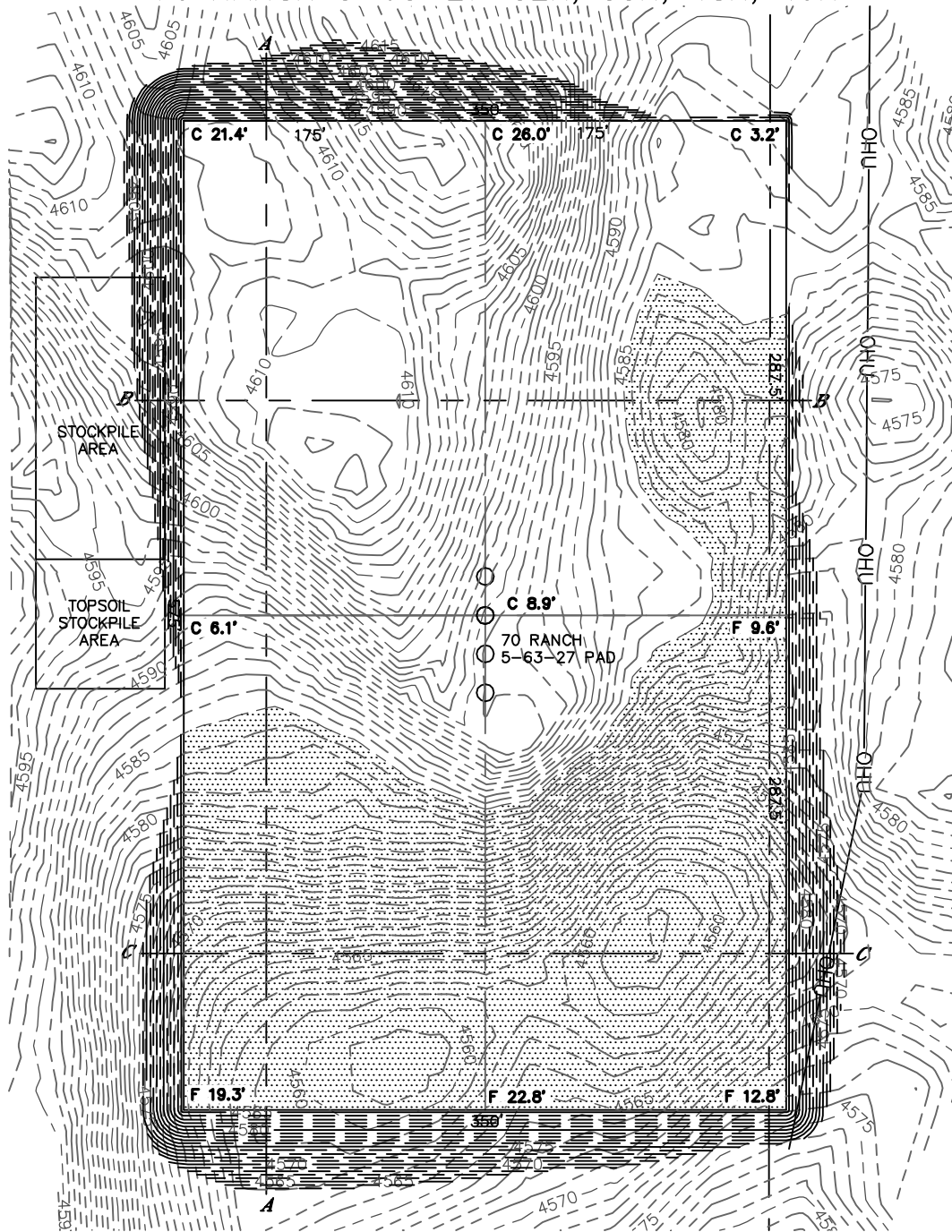


Lat40°, Inc. 1635 Foxtrail Drive, Suite 325 Loveland, CO 970-776-3321

CUT & FILL DIAGRAM

70 RANCH 5-63-27-32H, 33H, 48H, 49H

SECTION: 27
TOWNSHIP: 5N
RANGE: 63W



OPERATOR: BILL BARRETT CORPORATION
LOCATION: 1991 FSL, 165 FEL
EXISTING ELEV=4595'
PROPOSED ELEV=4585.8'
DISTURBANCE= 5.7 ACRES

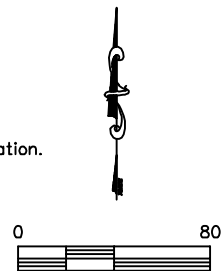
ESTIMATED EARTHWORK:
TOPSOIL= 7,454 CY
CUT= 60,384 CY
FILL= 60,374 CY
EXCESS= 10 CY

NOTE:

- 1) Ground elevations are based on an observed GPS elevation (NAVD 1988 DATUM).
- 2) No allowance has been made for soil expansion or compaction
- 3) Proposed elevation does not account for top soil removal.
- 4) Top soil volume assumes 12" depth across entire location.
- 5) Fill slopes 2:1
- 6) Cut slopes 1.5:1

LEGEND

EX. CONTOUR	---
PRO. CONTOUR	- - -
FILL AREA	



1"=80'
REV. 2-7-2012
PROJECT#: 2011312

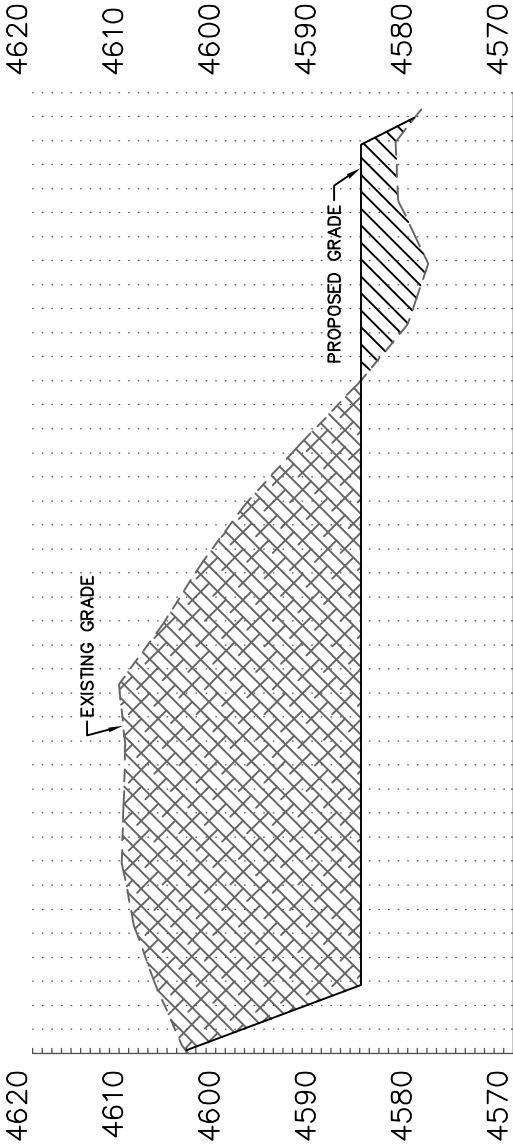
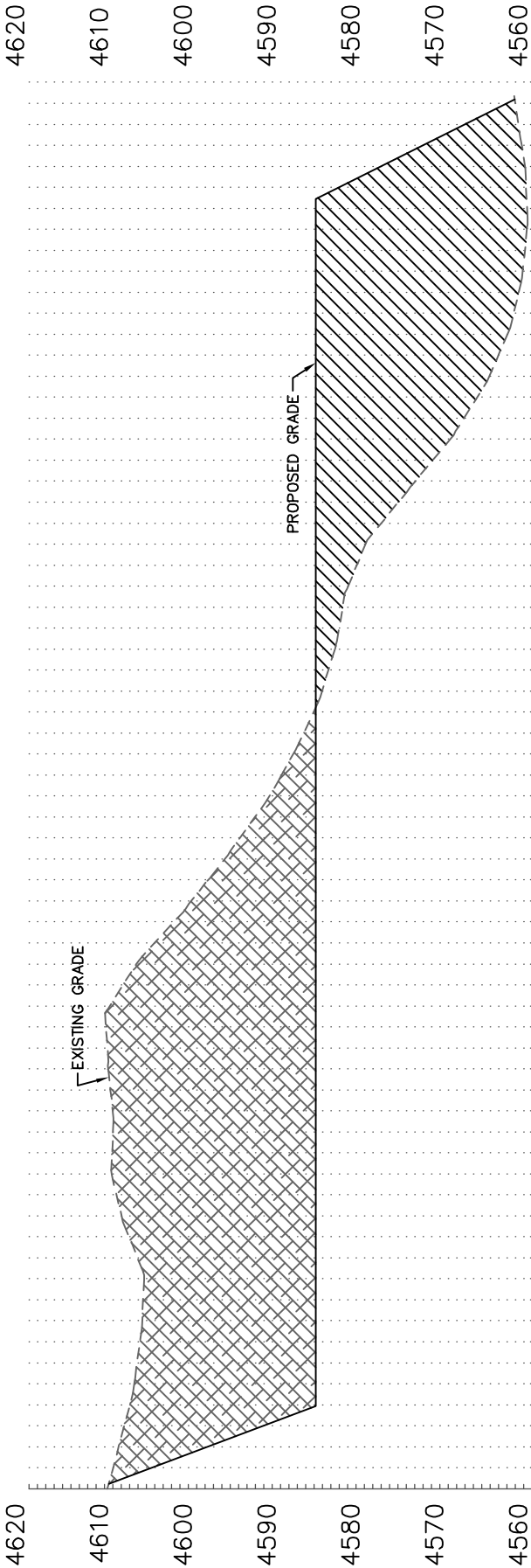


Lat40°, Inc. 1635 Foxtrail Drive, Suite 325 Loveland, CO 970-776-3321

CROSS SECTION DIAGRAM

70 RANCH 5-63-27-32H, 33H, 48H, 49H

SECTION: 27
TOWNSHIP: 5N
RANGE: 63W



HORIZONTAL SCALE: 1"=80', VERTICAL SCALE: 1"=20'