

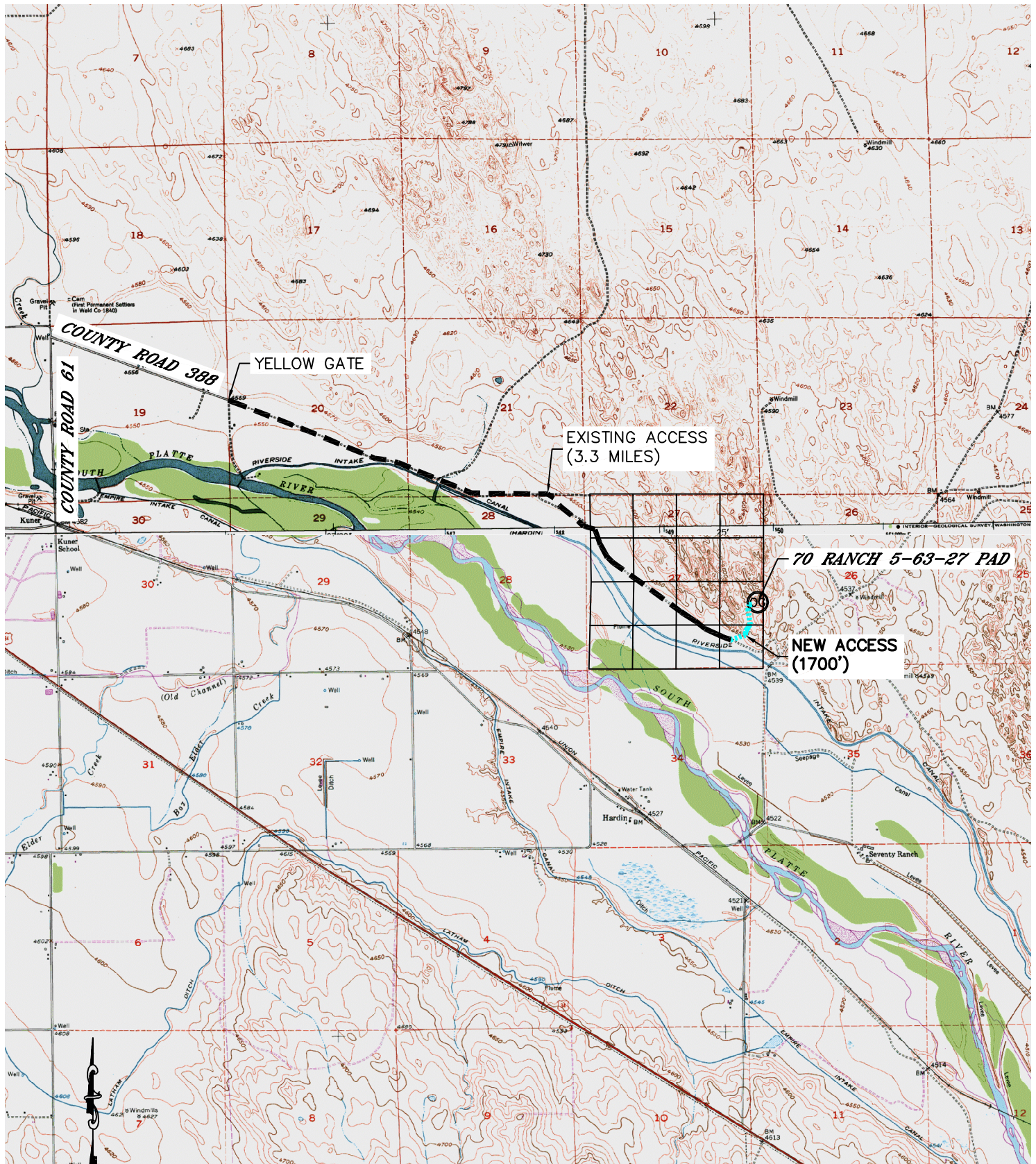


Lat40°, Inc. 1635 Foxtrail Drive, Suite 325 Loveland, CO 970-776-3321

ACCESS ROAD MAP-A

70 RANCH 5-63-27-32H, 33H, 48H, 49H

SECTION: 27
TOWNSHIP: 5N
RANGE: 63W



DIRECTIONS:

FROM THE INTERSECTION OF COUNTY ROAD 61 AND CR 388 DRIVE SOUTHEASTERLY (1.1 MILES) TO THE ENTRANCE OF 70 RANCH (YELLOW GATE). CONTINUE SOUTHEASTERLY (3.3 MILES) TO THE BEGINNING OF A NEW ACCESS ROAD, THEN NORTHEASTERLY (1700 FEET) TO PROPOSED WELL SITE.

REV: 4-6-2012
PROJECT#: 2011312

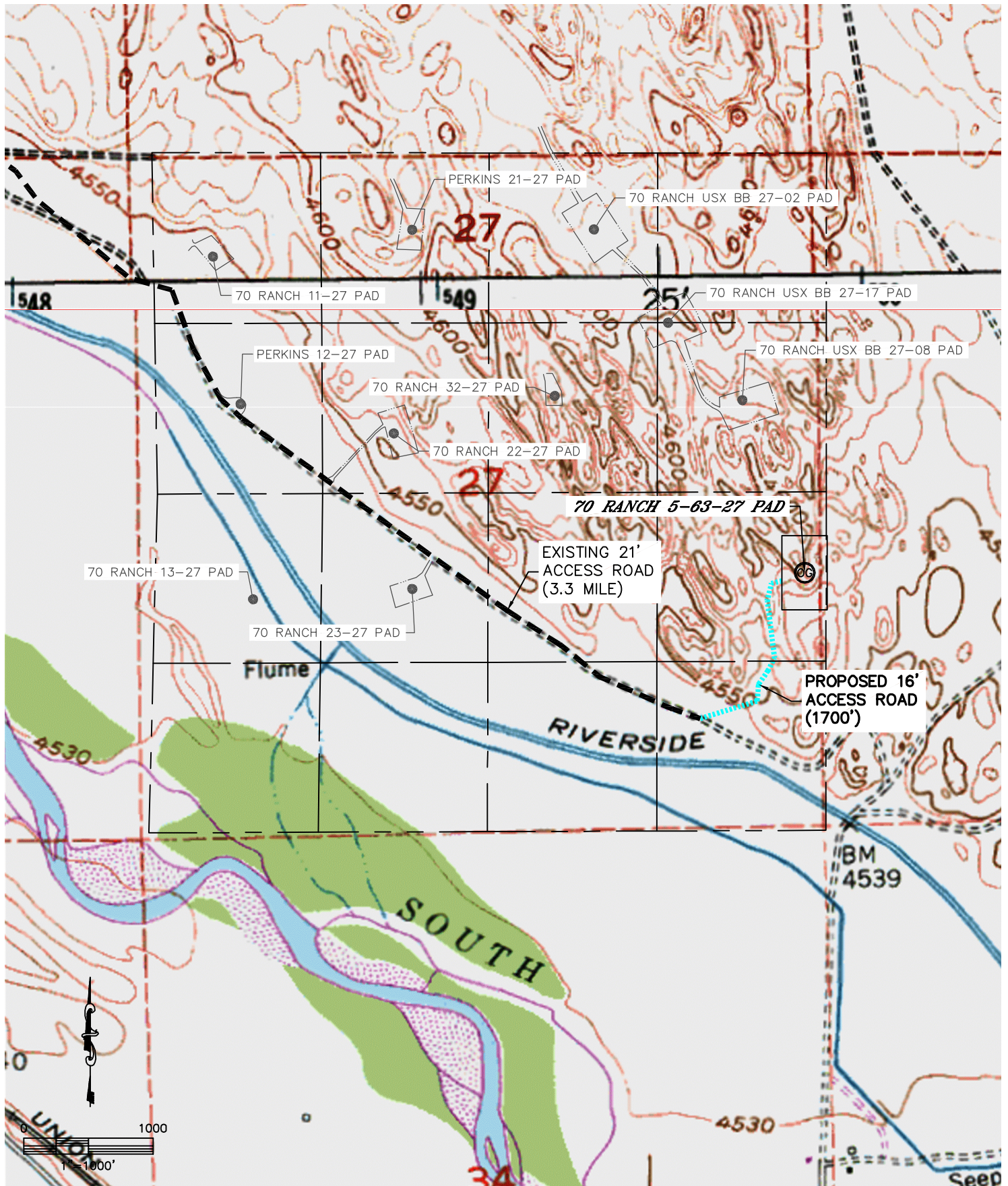


Lat40°, Inc. 1635 Foxtrail Drive, Suite 325 Loveland, CO 970-776-3321

ACCESS ROAD MAP-B

70 RANCH 5-63-27-32H, 33H, 48H, 49H

SECTION: 27
TOWNSHIP: 5N
RANGE: 63W



DATE: 4-6-2012
PROJECT#: 2011312