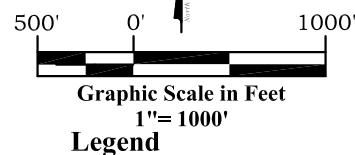
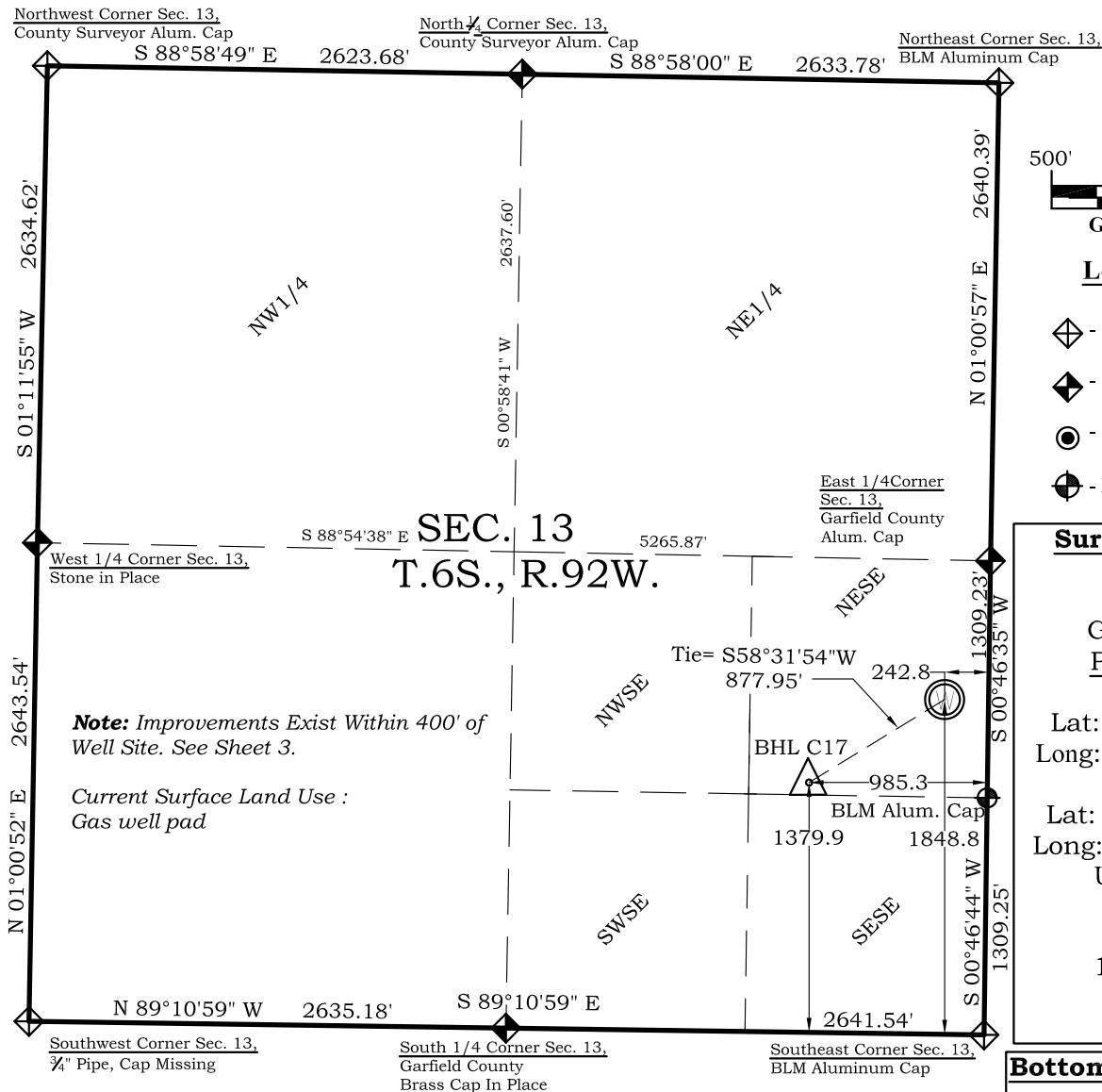


# Well Location Plat McLin C17

Section 13, Township 6 South, Range 92 West



## Surface: McLin C17

1849' FSL  
243' FEL  
Gnd El= 5725.2  
Pad El= 5726.0  
**NAD83**  
Lat: 39.525113186°N  
Long: 107.607212870°W  
**NAD27**  
Lat: 39.525132576°N  
Long: 107.606599857°W  
UTM 13 NORTH  
**NAD 1983**  
NORTHING  
14364465.255  
EASTING  
905182.725

## Bottom Hole: McLin C17

1380' FSL  
985' FEL  
**NAD83**  
Lat: 39.523796211°N  
Long: 107.609818600°W  
**NAD27**  
Lat: 39.523815605°N  
Long: 107.609205508°W

## SURVEYOR'S CERTIFICATE

I, SCOTT E. AIBNER, A REGISTERED LAND SURVEYOR, LICENSED UNDER THE LAWS OF THE STATE OF COLORADO DO HEREBY CERTIFY THAT THE SURVEY SHOWN HEREON WAS PREPARED BY RIVER VALLEY SURVEY, INC., FOR ANTERO RESOURCES, BY ME OR UNDER MY DIRECT SUPERVISION AND THAT THIS PLAT IS A TRUE REPRESENTATION THEREOF.

31143

SCOTT E. AIBNER, COLORADO REG. NO. 31143

## Notes:

1. LATITUDE AND LONGITUDE COORDINATES ARE DIFFERENTIALLY CORRECTED AND BASED ON PUBLISHED NGS CONTROL STATION "WDP-5". SYSTEM: UTM ZONE: 13 NORTH DATUM: NAD 1983 (CONUS)
2. ELEVATIONS ARE BASED ON NAVD OF 1983.
3. ALL BOTTOM AND TOP HOLE LOCATIONS ARE MEASURED 90 DEGREES FROM SECTION LINE.
4. USGS QUADRANGLE MAP "SILT".
5. CURRENT SURFACE LAND USE: HAY FIELD.
6. PDOP AT THE TIME OF LOCATION OF SURFACE WELL = 2.4



**River Valley Survey, Inc.**  
110 East 3rd. Street, Suite 213  
Rifle, Colorado 81650  
Ph: 970-379-7846

Project: McLin C PAD

Field Date: 01-19-10

Date: 03-12-12

Scale: 1"= 1000'

Sheet: 1 of 11

**Well Location Plat**  
**Prepared For Antero Resources**

**Situate In:**  
SE 1/4 Section 13, T6S., R. 92 W. of the  
6th P.M., Garfield County, Colorado

