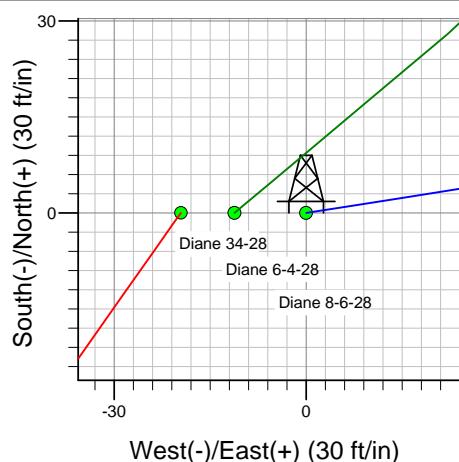
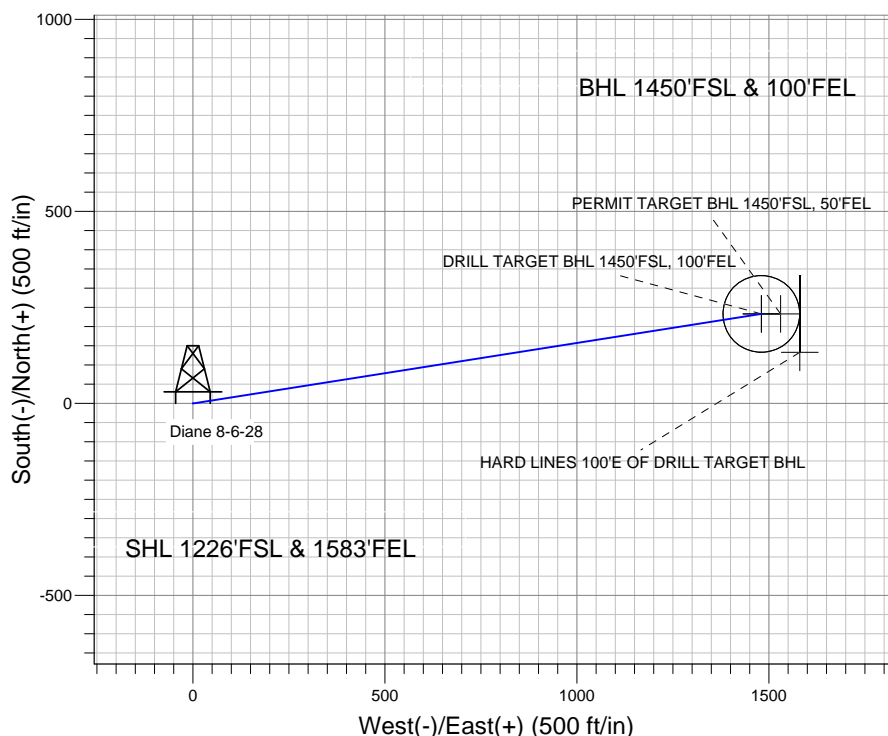
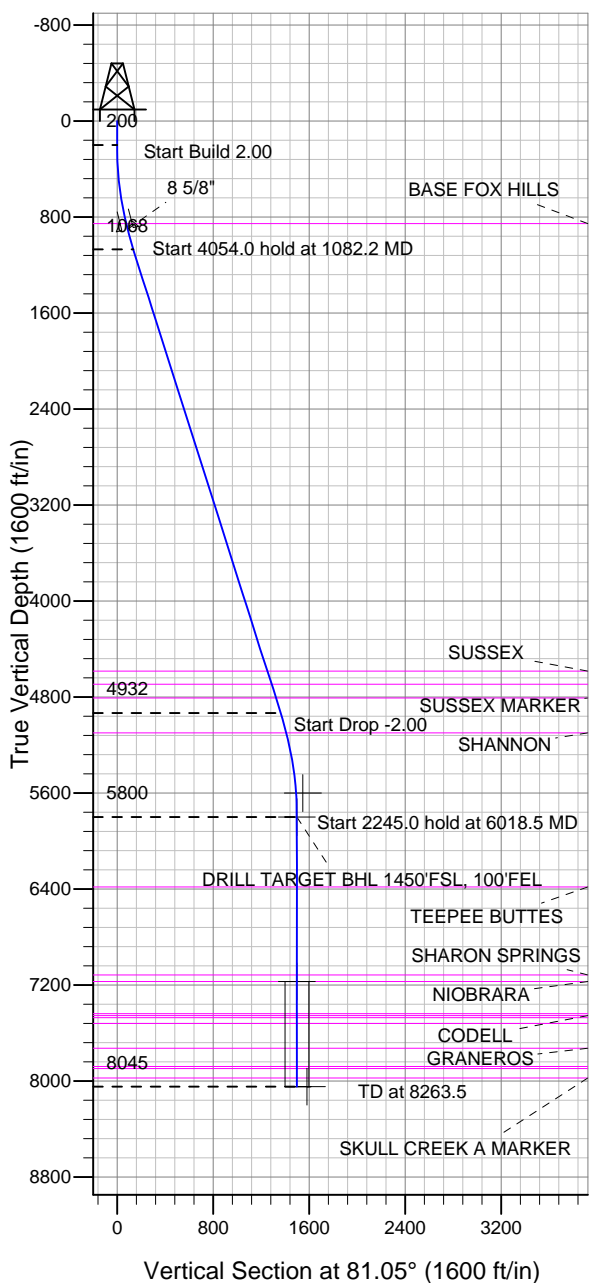


### Well Name: Diane 8-6-28

Surface Location: Diane 34-28 Pad Sec.28-T2N-R66W  
 North American Datum 1983 US State Plane 1983 Colorado Northern Zone  
 Ground Elevation: 4970.0  
 +N/-S +E/-W Northing Easting Latitude Longitude Slot  
 0.0 0.0 1281997.15 3201839.10 40.105220 -104.778420  
 Original Well Elev WELL @ 4982.0ft (Original Well Elev)

## EnCana Oil & Gas Weld County CO



Diane 34-28 Pad Sec.28-T2N-R66W  
 Diane 8-6-28  
 Plan #1 (4-03-12)  
 8:22, April 05 2012



Azimuths to True North  
 Magnetic North: 8.74°

Magnetic Field  
 Strength: 52888.8snT  
 Dip Angle: 66.78°  
 Date: 4/4/2012  
 Model: IGRF2010

### WELLBORE TARGET DETAILS (LAT/LONG)

Name	TVD	+N/-S	+E/-W	Latitude	Longitude	Shape
PERMIT TARGET BHL 1450'FSL, 50'FEL	5600.0	233.2	1530.1	40.105860	-104.772950	Point
DRILL TARGET BHL 1450'FSL, 100'FEL	5800.0	233.2	1480.1	40.105860	-104.773129	Point
TARGET CIRCLE 1450'FSL & 100'FEL	7169.0	233.2	1480.1	40.105860	-104.773129	Circle (Radius: 100.0)
HARD LINES 100'E OF DRILL TARGET BHL	8045.0	133.2	1580.1	40.105585	-104.772771	Polygon

### SECTION DETAILS

Sec	MD	Inc	Azi	TVD	+N/-S	+E/-W	DLeg	TFace	VSec	Target
1	0.0	0.00	0.00	0.0	0.0	0.0	0.00	0.00	0.0	
2	200.0	0.00	0.00	200.0	0.0	0.0	0.00	0.00	0.0	
3	1082.2	17.64	81.05	1068.3	21.0	133.1	2.00	81.05	134.8	
4	5136.3	17.64	81.05	4931.7	212.2	1347.0	0.00	0.00	1363.6	
5	6018.5	0.00	0.00	5800.0	233.2	1480.1	2.00	180.00	1498.4	DRILL TARGET BHL 1450'FSL, 100'FEL
6	8263.5	0.00	0.00	8045.0	233.2	1480.1	0.00	0.00	1498.4	



## **Directional**

### **EnCana Oil & Gas Weld County CO**

**SEC.28-T2N-R66W**

**Diane 34-28 Pad Sec.28-T2N-R66W**

**Diane 8-6-28**

**Wellbore #1**

**Plan: Plan #1 (4-03-12)**

### **Standard Planning Report**

**05 April, 2012**

Plan Sections										
Measured Depth (ft)	Inclination (°)	Azimuth (°)	Vertical Depth (ft)	+N/-S (ft)	+E/-W (ft)	Dogleg Rate (°/100ft)	Build Rate (°/100ft)	Turn Rate (°/100ft)	TFO (°)	Target
0.0	0.00	0.00	0.0	0.0	0.0	0.00	0.00	0.00	0.00	
200.0	0.00	0.00	200.0	0.0	0.0	0.00	0.00	0.00	0.00	
1,082.2	17.64	81.05	1,068.3	21.0	133.1	2.00	2.00	0.00	81.05	
5,136.3	17.64	81.05	4,931.7	212.2	1,347.0	0.00	0.00	0.00	0.00	
6,018.5	0.00	0.00	5,800.0	233.2	1,480.1	2.00	-2.00	0.00	180.00	DRILL TARGET BH
8,263.5	0.00	0.00	8,045.0	233.2	1,480.1	0.00	0.00	0.00	0.00	

<b>Database:</b>	Landmark	<b>Local Co-ordinate Reference:</b>	Well Diane 8-6-28
<b>Company:</b>	EnCana Oil & Gas Weld County CO	<b>TVD Reference:</b>	WELL @ 4982.0ft (Original Well Elev)
<b>Project:</b>	SEC.28-T2N-R66W	<b>MD Reference:</b>	WELL @ 4982.0ft (Original Well Elev)
<b>Site:</b>	Diane 34-28 Pad Sec.28-T2N-R66W	<b>North Reference:</b>	True
<b>Well:</b>	Diane 8-6-28	<b>Survey Calculation Method:</b>	Minimum Curvature
<b>Wellbore:</b>	Wellbore #1		
<b>Design:</b>	Plan #1 (4-03-12)		

Planned Survey									
Measured Depth (ft)	Inclination (°)	Azimuth (°)	Vertical Depth (ft)	+N/-S (ft)	+E/-W (ft)	Vertical Section (ft)	Dogleg Rate (°/100ft)	Build Rate (°/100ft)	Turn Rate (°/100ft)
0.0	0.00	0.00	0.0	0.0	0.0	0.0	0.00	0.00	0.00
40.0	0.00	0.00	40.0	0.0	0.0	0.0	0.00	0.00	0.00
80.0	0.00	0.00	80.0	0.0	0.0	0.0	0.00	0.00	0.00
120.0	0.00	0.00	120.0	0.0	0.0	0.0	0.00	0.00	0.00
160.0	0.00	0.00	160.0	0.0	0.0	0.0	0.00	0.00	0.00
200.0	0.00	0.00	200.0	0.0	0.0	0.0	0.00	0.00	0.00
240.0	0.80	81.05	240.0	0.0	0.3	0.3	2.00	2.00	0.00
280.0	1.60	81.05	280.0	0.2	1.1	1.1	2.00	2.00	0.00
320.0	2.40	81.05	320.0	0.4	2.5	2.5	2.00	2.00	0.00
360.0	3.20	81.05	359.9	0.7	4.4	4.5	2.00	2.00	0.00
400.0	4.00	81.05	399.8	1.1	6.9	7.0	2.00	2.00	0.00
440.0	4.80	81.05	439.7	1.6	9.9	10.0	2.00	2.00	0.00
480.0	5.60	81.05	479.6	2.1	13.5	13.7	2.00	2.00	0.00
520.0	6.40	81.05	519.3	2.8	17.6	17.9	2.00	2.00	0.00
560.0	7.20	81.05	559.1	3.5	22.3	22.6	2.00	2.00	0.00
600.0	8.00	81.05	598.7	4.3	27.5	27.9	2.00	2.00	0.00
640.0	8.80	81.05	638.3	5.2	33.3	33.7	2.00	2.00	0.00
680.0	9.60	81.05	677.8	6.2	39.6	40.1	2.00	2.00	0.00
720.0	10.40	81.05	717.1	7.3	46.5	47.1	2.00	2.00	0.00
760.0	11.20	81.05	756.4	8.5	53.9	54.6	2.00	2.00	0.00
800.0	12.00	81.05	795.6	9.7	61.8	62.6	2.00	2.00	0.00
840.0	12.80	81.05	834.7	11.1	70.3	71.2	2.00	2.00	0.00
858.8	13.18	81.05	853.0	11.7	74.5	75.4	2.00	2.00	0.00
<b>BASE FOX HILLS</b>									
880.0	13.60	81.05	873.6	12.5	79.3	80.3	2.00	2.00	0.00
907.2	14.14	81.05	900.0	13.5	85.8	86.8	2.00	2.00	0.00
<b>8 5/8"</b>									
920.0	14.40	81.05	912.4	14.0	88.9	90.0	2.00	2.00	0.00
960.0	15.20	81.05	951.1	15.6	99.0	100.2	2.00	2.00	0.00
1,000.0	16.00	81.05	989.6	17.3	109.6	111.0	2.00	2.00	0.00
1,040.0	16.80	81.05	1,028.0	19.0	120.8	122.3	2.00	2.00	0.00
1,080.0	17.60	81.05	1,066.2	20.9	132.5	134.1	2.00	2.00	0.00
1,082.2	17.64	81.05	1,068.3	21.0	133.1	134.8	2.00	2.00	0.00
1,120.0	17.64	81.05	1,104.3	22.8	144.4	146.2	0.00	0.00	0.00
1,160.0	17.64	81.05	1,142.5	24.6	156.4	158.3	0.00	0.00	0.00
1,200.0	17.64	81.05	1,180.6	26.5	168.4	170.5	0.00	0.00	0.00
1,240.0	17.64	81.05	1,218.7	28.4	180.4	182.6	0.00	0.00	0.00
1,280.0	17.64	81.05	1,256.8	30.3	192.3	194.7	0.00	0.00	0.00
1,320.0	17.64	81.05	1,294.9	32.2	204.3	206.8	0.00	0.00	0.00
1,360.0	17.64	81.05	1,333.1	34.1	216.3	219.0	0.00	0.00	0.00
1,400.0	17.64	81.05	1,371.2	36.0	228.3	231.1	0.00	0.00	0.00
1,440.0	17.64	81.05	1,409.3	37.9	240.3	243.2	0.00	0.00	0.00
1,480.0	17.64	81.05	1,447.4	39.7	252.2	255.3	0.00	0.00	0.00
1,520.0	17.64	81.05	1,485.5	41.6	264.2	267.5	0.00	0.00	0.00
1,560.0	17.64	81.05	1,523.6	43.5	276.2	279.6	0.00	0.00	0.00
1,600.0	17.64	81.05	1,561.8	45.4	288.2	291.7	0.00	0.00	0.00
1,640.0	17.64	81.05	1,599.9	47.3	300.1	303.8	0.00	0.00	0.00
1,680.0	17.64	81.05	1,638.0	49.2	312.1	316.0	0.00	0.00	0.00
1,720.0	17.64	81.05	1,676.1	51.1	324.1	328.1	0.00	0.00	0.00
1,760.0	17.64	81.05	1,714.2	52.9	336.1	340.2	0.00	0.00	0.00
1,800.0	17.64	81.05	1,752.4	54.8	348.0	352.3	0.00	0.00	0.00
1,840.0	17.64	81.05	1,790.5	56.7	360.0	364.5	0.00	0.00	0.00
1,880.0	17.64	81.05	1,828.6	58.6	372.0	376.6	0.00	0.00	0.00
1,920.0	17.64	81.05	1,866.7	60.5	384.0	388.7	0.00	0.00	0.00

<b>Database:</b>	Landmark	<b>Local Co-ordinate Reference:</b>	Well Diane 8-6-28
<b>Company:</b>	EnCana Oil & Gas Weld County CO	<b>TVD Reference:</b>	WELL @ 4982.0ft (Original Well Elev)
<b>Project:</b>	SEC.28-T2N-R66W	<b>MD Reference:</b>	WELL @ 4982.0ft (Original Well Elev)
<b>Site:</b>	Diane 34-28 Pad Sec.28-T2N-R66W	<b>North Reference:</b>	True
<b>Well:</b>	Diane 8-6-28	<b>Survey Calculation Method:</b>	Minimum Curvature
<b>Wellbore:</b>	Wellbore #1		
<b>Design:</b>	Plan #1 (4-03-12)		

Planned Survey									
Measured Depth (ft)	Inclination (°)	Azimuth (°)	Vertical Depth (ft)	+N/-S (ft)	+E/-W (ft)	Vertical Section (ft)	Dogleg Rate (°/100ft)	Build Rate (°/100ft)	Turn Rate (°/100ft)
1,960.0	17.64	81.05	1,904.8	62.4	395.9	400.8	0.00	0.00	0.00
2,000.0	17.64	81.05	1,942.9	64.3	407.9	413.0	0.00	0.00	0.00
2,040.0	17.64	81.05	1,981.1	66.2	419.9	425.1	0.00	0.00	0.00
2,080.0	17.64	81.05	2,019.2	68.0	431.9	437.2	0.00	0.00	0.00
2,120.0	17.64	81.05	2,057.3	69.9	443.9	449.3	0.00	0.00	0.00
2,160.0	17.64	81.05	2,095.4	71.8	455.8	461.5	0.00	0.00	0.00
2,200.0	17.64	81.05	2,133.5	73.7	467.8	473.6	0.00	0.00	0.00
2,240.0	17.64	81.05	2,171.7	75.6	479.8	485.7	0.00	0.00	0.00
2,280.0	17.64	81.05	2,209.8	77.5	491.8	497.8	0.00	0.00	0.00
2,320.0	17.64	81.05	2,247.9	79.4	503.7	510.0	0.00	0.00	0.00
2,360.0	17.64	81.05	2,286.0	81.3	515.7	522.1	0.00	0.00	0.00
2,400.0	17.64	81.05	2,324.1	83.1	527.7	534.2	0.00	0.00	0.00
2,440.0	17.64	81.05	2,362.2	85.0	539.7	546.3	0.00	0.00	0.00
2,480.0	17.64	81.05	2,400.4	86.9	551.6	558.5	0.00	0.00	0.00
2,520.0	17.64	81.05	2,438.5	88.8	563.6	570.6	0.00	0.00	0.00
2,560.0	17.64	81.05	2,476.6	90.7	575.6	582.7	0.00	0.00	0.00
2,600.0	17.64	81.05	2,514.7	92.6	587.6	594.8	0.00	0.00	0.00
2,640.0	17.64	81.05	2,552.8	94.5	599.6	606.9	0.00	0.00	0.00
2,680.0	17.64	81.05	2,591.0	96.4	611.5	619.1	0.00	0.00	0.00
2,720.0	17.64	81.05	2,629.1	98.2	623.5	631.2	0.00	0.00	0.00
2,760.0	17.64	81.05	2,667.2	100.1	635.5	643.3	0.00	0.00	0.00
2,800.0	17.64	81.05	2,705.3	102.0	647.5	655.4	0.00	0.00	0.00
2,840.0	17.64	81.05	2,743.4	103.9	659.4	667.6	0.00	0.00	0.00
2,880.0	17.64	81.05	2,781.5	105.8	671.4	679.7	0.00	0.00	0.00
2,920.0	17.64	81.05	2,819.7	107.7	683.4	691.8	0.00	0.00	0.00
2,960.0	17.64	81.05	2,857.8	109.6	695.4	703.9	0.00	0.00	0.00
3,000.0	17.64	81.05	2,895.9	111.4	707.3	716.1	0.00	0.00	0.00
3,040.0	17.64	81.05	2,934.0	113.3	719.3	728.2	0.00	0.00	0.00
3,080.0	17.64	81.05	2,972.1	115.2	731.3	740.3	0.00	0.00	0.00
3,120.0	17.64	81.05	3,010.3	117.1	743.3	752.4	0.00	0.00	0.00
3,160.0	17.64	81.05	3,048.4	119.0	755.2	764.6	0.00	0.00	0.00
3,200.0	17.64	81.05	3,086.5	120.9	767.2	776.7	0.00	0.00	0.00
3,240.0	17.64	81.05	3,124.6	122.8	779.2	788.8	0.00	0.00	0.00
3,280.0	17.64	81.05	3,162.7	124.7	791.2	800.9	0.00	0.00	0.00
3,320.0	17.64	81.05	3,200.8	126.5	803.2	813.1	0.00	0.00	0.00
3,360.0	17.64	81.05	3,239.0	128.4	815.1	825.2	0.00	0.00	0.00
3,400.0	17.64	81.05	3,277.1	130.3	827.1	837.3	0.00	0.00	0.00
3,440.0	17.64	81.05	3,315.2	132.2	839.1	849.4	0.00	0.00	0.00
3,480.0	17.64	81.05	3,353.3	134.1	851.1	861.6	0.00	0.00	0.00
3,520.0	17.64	81.05	3,391.4	136.0	863.0	873.7	0.00	0.00	0.00
3,560.0	17.64	81.05	3,429.6	137.9	875.0	885.8	0.00	0.00	0.00
3,600.0	17.64	81.05	3,467.7	139.8	887.0	897.9	0.00	0.00	0.00
3,640.0	17.64	81.05	3,505.8	141.6	899.0	910.1	0.00	0.00	0.00
3,680.0	17.64	81.05	3,543.9	143.5	910.9	922.2	0.00	0.00	0.00
3,720.0	17.64	81.05	3,582.0	145.4	922.9	934.3	0.00	0.00	0.00
3,760.0	17.64	81.05	3,620.1	147.3	934.9	946.4	0.00	0.00	0.00
3,800.0	17.64	81.05	3,658.3	149.2	946.9	958.6	0.00	0.00	0.00
3,840.0	17.64	81.05	3,696.4	151.1	958.9	970.7	0.00	0.00	0.00
3,880.0	17.64	81.05	3,734.5	153.0	970.8	982.8	0.00	0.00	0.00
3,920.0	17.64	81.05	3,772.6	154.8	982.8	994.9	0.00	0.00	0.00
3,960.0	17.64	81.05	3,810.7	156.7	994.8	1,007.1	0.00	0.00	0.00
4,000.0	17.64	81.05	3,848.9	158.6	1,006.8	1,019.2	0.00	0.00	0.00
4,040.0	17.64	81.05	3,887.0	160.5	1,018.7	1,031.3	0.00	0.00	0.00
4,080.0	17.64	81.05	3,925.1	162.4	1,030.7	1,043.4	0.00	0.00	0.00

<b>Database:</b>	Landmark	<b>Local Co-ordinate Reference:</b>	Well Diane 8-6-28
<b>Company:</b>	EnCana Oil & Gas Weld County CO	<b>TVD Reference:</b>	WELL @ 4982.0ft (Original Well Elev)
<b>Project:</b>	SEC.28-T2N-R66W	<b>MD Reference:</b>	WELL @ 4982.0ft (Original Well Elev)
<b>Site:</b>	Diane 34-28 Pad Sec.28-T2N-R66W	<b>North Reference:</b>	True
<b>Well:</b>	Diane 8-6-28	<b>Survey Calculation Method:</b>	Minimum Curvature
<b>Wellbore:</b>	Wellbore #1		
<b>Design:</b>	Plan #1 (4-03-12)		

Planned Survey									
Measured Depth (ft)	Inclination (°)	Azimuth (°)	Vertical Depth (ft)	+N/-S (ft)	+E/-W (ft)	Vertical Section (ft)	Dogleg Rate (°/100ft)	Build Rate (°/100ft)	Turn Rate (°/100ft)
4,120.0	17.64	81.05	3,963.2	164.3	1,042.7	1,055.6	0.00	0.00	0.00
4,160.0	17.64	81.05	4,001.3	166.2	1,054.7	1,067.7	0.00	0.00	0.00
4,200.0	17.64	81.05	4,039.4	168.1	1,066.6	1,079.8	0.00	0.00	0.00
4,240.0	17.64	81.05	4,077.6	169.9	1,078.6	1,091.9	0.00	0.00	0.00
4,280.0	17.64	81.05	4,115.7	171.8	1,090.6	1,104.0	0.00	0.00	0.00
4,320.0	17.64	81.05	4,153.8	173.7	1,102.6	1,116.2	0.00	0.00	0.00
4,360.0	17.64	81.05	4,191.9	175.6	1,114.5	1,128.3	0.00	0.00	0.00
4,400.0	17.64	81.05	4,230.0	177.5	1,126.5	1,140.4	0.00	0.00	0.00
4,440.0	17.64	81.05	4,268.2	179.4	1,138.5	1,152.5	0.00	0.00	0.00
4,480.0	17.64	81.05	4,306.3	181.3	1,150.5	1,164.7	0.00	0.00	0.00
4,520.0	17.64	81.05	4,344.4	183.2	1,162.5	1,176.8	0.00	0.00	0.00
4,560.0	17.64	81.05	4,382.5	185.0	1,174.4	1,188.9	0.00	0.00	0.00
4,600.0	17.64	81.05	4,420.6	186.9	1,186.4	1,201.0	0.00	0.00	0.00
4,640.0	17.64	81.05	4,458.7	188.8	1,198.4	1,213.2	0.00	0.00	0.00
4,680.0	17.64	81.05	4,496.9	190.7	1,210.4	1,225.3	0.00	0.00	0.00
4,720.0	17.64	81.05	4,535.0	192.6	1,222.3	1,237.4	0.00	0.00	0.00
4,760.0	17.64	81.05	4,573.1	194.5	1,234.3	1,249.5	0.00	0.00	0.00
4,771.4	17.64	81.05	4,584.0	195.0	1,237.7	1,253.0	0.00	0.00	0.00
<b>SUSSEX</b>									
4,800.0	17.64	81.05	4,611.2	196.4	1,246.3	1,261.7	0.00	0.00	0.00
4,840.0	17.64	81.05	4,649.3	198.2	1,258.3	1,273.8	0.00	0.00	0.00
4,880.0	17.64	81.05	4,687.5	200.1	1,270.2	1,285.9	0.00	0.00	0.00
4,884.8	17.64	81.05	4,692.0	200.4	1,271.7	1,287.4	0.00	0.00	0.00
<b>SUSSEX PAY TOP</b>									
4,920.0	17.64	81.05	4,725.6	202.0	1,282.2	1,298.0	0.00	0.00	0.00
4,960.0	17.64	81.05	4,763.7	203.9	1,294.2	1,310.2	0.00	0.00	0.00
5,000.0	17.64	81.05	4,801.8	205.8	1,306.2	1,322.3	0.00	0.00	0.00
5,005.4	17.64	81.05	4,807.0	206.1	1,307.8	1,323.9	0.00	0.00	0.00
<b>SUSSEX MARKER</b>									
5,040.0	17.64	81.05	4,839.9	207.7	1,318.2	1,334.4	0.00	0.00	0.00
5,080.0	17.64	81.05	4,878.0	209.6	1,330.1	1,346.5	0.00	0.00	0.00
5,120.0	17.64	81.05	4,916.2	211.5	1,342.1	1,358.7	0.00	0.00	0.00
5,136.3	17.64	81.05	4,931.7	212.2	1,347.0	1,363.6	0.00	0.00	0.00
5,160.0	17.17	81.05	4,954.3	213.3	1,354.0	1,370.7	2.00	-2.00	0.00
5,200.0	16.37	81.05	4,992.6	215.1	1,365.4	1,382.2	2.00	-2.00	0.00
5,240.0	15.57	81.05	5,031.1	216.8	1,376.3	1,393.2	2.00	-2.00	0.00
5,280.0	14.77	81.05	5,069.7	218.5	1,386.6	1,403.7	2.00	-2.00	0.00
5,308.2	14.21	81.05	5,097.0	219.6	1,393.6	1,410.8	2.00	-2.00	0.00
<b>SHANNON</b>									
5,320.0	13.97	81.05	5,108.4	220.0	1,396.4	1,413.6	2.00	-2.00	0.00
5,360.0	13.17	81.05	5,147.3	221.5	1,405.7	1,423.0	2.00	-2.00	0.00
5,400.0	12.37	81.05	5,186.3	222.8	1,414.4	1,431.9	2.00	-2.00	0.00
5,440.0	11.57	81.05	5,225.4	224.1	1,422.6	1,440.2	2.00	-2.00	0.00
5,480.0	10.77	81.05	5,264.7	225.3	1,430.3	1,447.9	2.00	-2.00	0.00
5,520.0	9.97	81.05	5,304.0	226.5	1,437.4	1,455.1	2.00	-2.00	0.00
5,560.0	9.17	81.05	5,343.5	227.5	1,443.9	1,461.8	2.00	-2.00	0.00
5,600.0	8.37	81.05	5,383.0	228.5	1,450.0	1,467.8	2.00	-2.00	0.00
5,640.0	7.57	81.05	5,422.6	229.3	1,455.4	1,473.4	2.00	-2.00	0.00
5,680.0	6.77	81.05	5,462.3	230.1	1,460.4	1,478.4	2.00	-2.00	0.00
5,720.0	5.97	81.05	5,502.1	230.8	1,464.8	1,482.8	2.00	-2.00	0.00
5,760.0	5.17	81.05	5,541.9	231.4	1,468.6	1,486.7	2.00	-2.00	0.00
5,800.0	4.37	81.05	5,581.7	231.9	1,471.9	1,490.0	2.00	-2.00	0.00
5,822.2	3.93	81.05	5,603.9	232.2	1,473.5	1,491.6	2.00	-2.00	0.00
<b>PERMIT TARGET BHL 1450'FSL, 50'FEL</b>									

<b>Database:</b>	Landmark	<b>Local Co-ordinate Reference:</b>	Well Diane 8-6-28
<b>Company:</b>	EnCana Oil & Gas Weld County CO	<b>TVD Reference:</b>	WELL @ 4982.0ft (Original Well Elev)
<b>Project:</b>	SEC.28-T2N-R66W	<b>MD Reference:</b>	WELL @ 4982.0ft (Original Well Elev)
<b>Site:</b>	Diane 34-28 Pad Sec.28-T2N-R66W	<b>North Reference:</b>	True
<b>Well:</b>	Diane 8-6-28	<b>Survey Calculation Method:</b>	Minimum Curvature
<b>Wellbore:</b>	Wellbore #1		
<b>Design:</b>	Plan #1 (4-03-12)		

Planned Survey									
Measured Depth (ft)	Inclination (°)	Azimuth (°)	Vertical Depth (ft)	+N/-S (ft)	+E/-W (ft)	Vertical Section (ft)	Dogleg Rate (°/100ft)	Build Rate (°/100ft)	Turn Rate (°/100ft)
5,840.0	3.57	81.05	5,621.6	232.3	1,474.6	1,492.8	2.00	-2.00	0.00
5,880.0	2.77	81.05	5,661.6	232.7	1,476.8	1,495.0	2.00	-2.00	0.00
5,920.0	1.97	81.05	5,701.5	232.9	1,478.4	1,496.7	2.00	-2.00	0.00
5,960.0	1.17	81.05	5,741.5	233.1	1,479.5	1,497.8	2.00	-2.00	0.00
6,000.0	0.37	81.05	5,781.5	233.2	1,480.0	1,498.3	2.00	-2.00	0.00
6,018.5	0.00	0.00	5,800.0	233.2	1,480.1	1,498.4	2.00	-2.00	0.00
<b>DRILL TARGET BHL 1450'FSL, 100'FEL</b>									
6,040.0	0.00	0.00	5,821.5	233.2	1,480.1	1,498.4	0.00	0.00	0.00
6,080.0	0.00	0.00	5,861.5	233.2	1,480.1	1,498.4	0.00	0.00	0.00
6,120.0	0.00	0.00	5,901.5	233.2	1,480.1	1,498.4	0.00	0.00	0.00
6,160.0	0.00	0.00	5,941.5	233.2	1,480.1	1,498.4	0.00	0.00	0.00
6,200.0	0.00	0.00	5,981.5	233.2	1,480.1	1,498.4	0.00	0.00	0.00
6,240.0	0.00	0.00	6,021.5	233.2	1,480.1	1,498.4	0.00	0.00	0.00
6,280.0	0.00	0.00	6,061.5	233.2	1,480.1	1,498.4	0.00	0.00	0.00
6,320.0	0.00	0.00	6,101.5	233.2	1,480.1	1,498.4	0.00	0.00	0.00
6,360.0	0.00	0.00	6,141.5	233.2	1,480.1	1,498.4	0.00	0.00	0.00
6,400.0	0.00	0.00	6,181.5	233.2	1,480.1	1,498.4	0.00	0.00	0.00
6,440.0	0.00	0.00	6,221.5	233.2	1,480.1	1,498.4	0.00	0.00	0.00
6,480.0	0.00	0.00	6,261.5	233.2	1,480.1	1,498.4	0.00	0.00	0.00
6,520.0	0.00	0.00	6,301.5	233.2	1,480.1	1,498.4	0.00	0.00	0.00
6,560.0	0.00	0.00	6,341.5	233.2	1,480.1	1,498.4	0.00	0.00	0.00
6,600.0	0.00	0.00	6,381.5	233.2	1,480.1	1,498.4	0.00	0.00	0.00
6,600.5	0.00	0.00	6,382.0	233.2	1,480.1	1,498.4	0.00	0.00	0.00
<b>TEEPEE BUTTES</b>									
6,640.0	0.00	0.00	6,421.5	233.2	1,480.1	1,498.4	0.00	0.00	0.00
6,680.0	0.00	0.00	6,461.5	233.2	1,480.1	1,498.4	0.00	0.00	0.00
6,720.0	0.00	0.00	6,501.5	233.2	1,480.1	1,498.4	0.00	0.00	0.00
6,760.0	0.00	0.00	6,541.5	233.2	1,480.1	1,498.4	0.00	0.00	0.00
6,800.0	0.00	0.00	6,581.5	233.2	1,480.1	1,498.4	0.00	0.00	0.00
6,840.0	0.00	0.00	6,621.5	233.2	1,480.1	1,498.4	0.00	0.00	0.00
6,880.0	0.00	0.00	6,661.5	233.2	1,480.1	1,498.4	0.00	0.00	0.00
6,920.0	0.00	0.00	6,701.5	233.2	1,480.1	1,498.4	0.00	0.00	0.00
6,960.0	0.00	0.00	6,741.5	233.2	1,480.1	1,498.4	0.00	0.00	0.00
7,000.0	0.00	0.00	6,781.5	233.2	1,480.1	1,498.4	0.00	0.00	0.00
7,040.0	0.00	0.00	6,821.5	233.2	1,480.1	1,498.4	0.00	0.00	0.00
7,080.0	0.00	0.00	6,861.5	233.2	1,480.1	1,498.4	0.00	0.00	0.00
7,120.0	0.00	0.00	6,901.5	233.2	1,480.1	1,498.4	0.00	0.00	0.00
7,160.0	0.00	0.00	6,941.5	233.2	1,480.1	1,498.4	0.00	0.00	0.00
7,200.0	0.00	0.00	6,981.5	233.2	1,480.1	1,498.4	0.00	0.00	0.00
7,240.0	0.00	0.00	7,021.5	233.2	1,480.1	1,498.4	0.00	0.00	0.00
7,280.0	0.00	0.00	7,061.5	233.2	1,480.1	1,498.4	0.00	0.00	0.00
7,320.0	0.00	0.00	7,101.5	233.2	1,480.1	1,498.4	0.00	0.00	0.00
7,333.5	0.00	0.00	7,115.0	233.2	1,480.1	1,498.4	0.00	0.00	0.00
<b>SHARON SPRINGS</b>									
7,360.0	0.00	0.00	7,141.5	233.2	1,480.1	1,498.4	0.00	0.00	0.00
7,387.5	0.00	0.00	7,169.0	233.2	1,480.1	1,498.4	0.00	0.00	0.00
<b>NIOBRARA - TARGET CIRCLE 1450'FSL &amp; 100'FEL</b>									
7,400.0	0.00	0.00	7,181.5	233.2	1,480.1	1,498.4	0.00	0.00	0.00
7,440.0	0.00	0.00	7,221.5	233.2	1,480.1	1,498.4	0.00	0.00	0.00
7,480.0	0.00	0.00	7,261.5	233.2	1,480.1	1,498.4	0.00	0.00	0.00
7,520.0	0.00	0.00	7,301.5	233.2	1,480.1	1,498.4	0.00	0.00	0.00
7,560.0	0.00	0.00	7,341.5	233.2	1,480.1	1,498.4	0.00	0.00	0.00
7,600.0	0.00	0.00	7,381.5	233.2	1,480.1	1,498.4	0.00	0.00	0.00

<b>Database:</b>	Landmark	<b>Local Co-ordinate Reference:</b>	Well Diane 8-6-28
<b>Company:</b>	EnCana Oil & Gas Weld County CO	<b>TVD Reference:</b>	WELL @ 4982.0ft (Original Well Elev)
<b>Project:</b>	SEC.28-T2N-R66W	<b>MD Reference:</b>	WELL @ 4982.0ft (Original Well Elev)
<b>Site:</b>	Diane 34-28 Pad Sec.28-T2N-R66W	<b>North Reference:</b>	True
<b>Well:</b>	Diane 8-6-28	<b>Survey Calculation Method:</b>	Minimum Curvature
<b>Wellbore:</b>	Wellbore #1		
<b>Design:</b>	Plan #1 (4-03-12)		

Planned Survey									
Measured Depth (ft)	Inclination (°)	Azimuth (°)	Vertical Depth (ft)	+N/-S (ft)	+E/-W (ft)	Vertical Section (ft)	Dogleg Rate (°/100ft)	Build Rate (°/100ft)	Turn Rate (°/100ft)
7,640.0	0.00	0.00	7,421.5	233.2	1,480.1	1,498.4	0.00	0.00	0.00
7,655.5	0.00	0.00	7,437.0	233.2	1,480.1	1,498.4	0.00	0.00	0.00
FT. HAYES									
7,671.5	0.00	0.00	7,453.0	233.2	1,480.1	1,498.4	0.00	0.00	0.00
CODELL									
7,680.0	0.00	0.00	7,461.5	233.2	1,480.1	1,498.4	0.00	0.00	0.00
7,690.5	0.00	0.00	7,472.0	233.2	1,480.1	1,498.4	0.00	0.00	0.00
FAIRPORT									
7,720.0	0.00	0.00	7,501.5	233.2	1,480.1	1,498.4	0.00	0.00	0.00
7,737.5	0.00	0.00	7,519.0	233.2	1,480.1	1,498.4	0.00	0.00	0.00
GREENHORN									
7,760.0	0.00	0.00	7,541.5	233.2	1,480.1	1,498.4	0.00	0.00	0.00
7,800.0	0.00	0.00	7,581.5	233.2	1,480.1	1,498.4	0.00	0.00	0.00
7,840.0	0.00	0.00	7,621.5	233.2	1,480.1	1,498.4	0.00	0.00	0.00
7,880.0	0.00	0.00	7,661.5	233.2	1,480.1	1,498.4	0.00	0.00	0.00
7,920.0	0.00	0.00	7,701.5	233.2	1,480.1	1,498.4	0.00	0.00	0.00
7,944.5	0.00	0.00	7,726.0	233.2	1,480.1	1,498.4	0.00	0.00	0.00
GRANEROS									
7,960.0	0.00	0.00	7,741.5	233.2	1,480.1	1,498.4	0.00	0.00	0.00
8,000.0	0.00	0.00	7,781.5	233.2	1,480.1	1,498.4	0.00	0.00	0.00
8,040.0	0.00	0.00	7,821.5	233.2	1,480.1	1,498.4	0.00	0.00	0.00
8,080.0	0.00	0.00	7,861.5	233.2	1,480.1	1,498.4	0.00	0.00	0.00
8,096.5	0.00	0.00	7,878.0	233.2	1,480.1	1,498.4	0.00	0.00	0.00
MOWRY									
8,113.5	0.00	0.00	7,895.0	233.2	1,480.1	1,498.4	0.00	0.00	0.00
J-SAND									
8,120.0	0.00	0.00	7,901.5	233.2	1,480.1	1,498.4	0.00	0.00	0.00
8,160.0	0.00	0.00	7,941.5	233.2	1,480.1	1,498.4	0.00	0.00	0.00
8,192.5	0.00	0.00	7,974.0	233.2	1,480.1	1,498.4	0.00	0.00	0.00
SKULL CREEK A MARKER									
8,200.0	0.00	0.00	7,981.5	233.2	1,480.1	1,498.4	0.00	0.00	0.00
8,240.0	0.00	0.00	8,021.5	233.2	1,480.1	1,498.4	0.00	0.00	0.00
8,263.5	0.00	0.00	8,045.0	233.2	1,480.1	1,498.4	0.00	0.00	0.00
HARD LINES 100'E OF DRILL TARGET BHL									

Casing Points					
Measured Depth (ft)	Vertical Depth (ft)	Name	Casing Diameter (")	Hole Diameter (")	
907.2	900.0	8 5/8"	8-5/8	12-1/4	



<b>Database:</b>	Landmark	<b>Local Co-ordinate Reference:</b>	Well Diane 8-6-28
<b>Company:</b>	EnCana Oil & Gas Weld County CO	<b>TVD Reference:</b>	WELL @ 4982.0ft (Original Well Elev)
<b>Project:</b>	SEC.28-T2N-R66W	<b>MD Reference:</b>	WELL @ 4982.0ft (Original Well Elev)
<b>Site:</b>	Diane 34-28 Pad Sec.28-T2N-R66W	<b>North Reference:</b>	True
<b>Well:</b>	Diane 8-6-28	<b>Survey Calculation Method:</b>	Minimum Curvature
<b>Wellbore:</b>	Wellbore #1		
<b>Design:</b>	Plan #1 (4-03-12)		

Formations					
Measured Depth (ft)	Vertical Depth (ft)	Name	Lithology	Dip (°)	Dip Direction (°)
858.8	853.0	BASE FOX HILLS		0.00	
4,771.4	4,584.0	SUSSEX		0.00	
4,884.8	4,692.0	SUSSEX PAY TOP		0.00	
5,005.4	4,807.0	SUSSEX MARKER		0.00	
5,308.2	5,097.0	SHANNON		0.00	
6,600.5	6,382.0	TEEPEE BUTTES		0.00	
7,333.5	7,115.0	SHARON SPRINGS		0.00	
7,387.5	7,169.0	NIOBRARA		0.00	
7,655.5	7,437.0	FT. HAYES		0.00	
7,671.5	7,453.0	CODELL		0.00	
7,690.5	7,472.0	FAIRPORT		0.00	
7,737.5	7,519.0	GREENHORN		0.00	
7,944.5	7,726.0	GRANEROS		0.00	
8,096.5	7,878.0	MOWRY		0.00	
8,113.5	7,895.0	J-SAND		0.00	
8,192.5	7,974.0	SKULL CREEK A MARKER		0.00	



## **Directional**

### **EnCana Oil & Gas Weld County CO**

**SEC.28-T2N-R66W**

**Diane 34-28 Pad Sec.28-T2N-R66W**

**Diane 8-6-28**

**Wellbore #1**

**Plan #1 (4-03-12)**

### **Anticollision Report**

**05 April, 2012**



<b>Company:</b>	EnCana Oil & Gas Weld County CO	<b>Local Co-ordinate Reference:</b>	Well Diane 8-6-28
<b>Project:</b>	SEC.28-T2N-R66W	<b>TVD Reference:</b>	WELL @ 4982.0ft (Original Well Elev)
<b>Reference Site:</b>	Diane 34-28 Pad Sec.28-T2N-R66W	<b>MD Reference:</b>	WELL @ 4982.0ft (Original Well Elev)
<b>Site Error:</b>	0.0ft	<b>North Reference:</b>	True
<b>Reference Well:</b>	Diane 8-6-28	<b>Survey Calculation Method:</b>	Minimum Curvature
<b>Well Error:</b>	0.0ft	<b>Output errors are at</b>	2.00 sigma
<b>Reference Wellbore</b>	Wellbore #1	<b>Database:</b>	Landmark
<b>Reference Design:</b>	Plan #1 (4-03-12)	<b>Offset TVD Reference:</b>	Offset Datum

Offset Design													Offset Site Error:	0.0 ft
Survey Program: 0-MWD													Offset Well Error:	0.0 ft
Reference		Offset		Semi Major Axis			Distance							Warning
Measured Depth (ft)	Vertical Depth (ft)	Measured Depth (ft)	Vertical Depth (ft)	Reference (ft)	Offset (ft)	Highside Toolface (°)	Offset Wellbore Centre +N/-S (ft)	+E/-W (ft)	Between Centres (ft)	Between Ellipses (ft)	Minimum Separation (ft)	Separation Factor		
1,800.0	1,752.4	1,751.4	1,751.4	7.9	3.8	-162.14	105.7	-8.4	360.0	351.4	8.65	41.609		
1,900.0	1,847.6	1,846.6	1,846.6	8.5	4.0	-163.51	105.7	-8.4	389.1	380.0	9.14	42.578		
2,000.0	1,942.9	1,941.9	1,941.9	9.2	4.3	-164.68	105.7	-8.4	418.4	408.7	9.63	43.458		
2,100.0	2,038.2	2,037.2	2,037.2	9.8	4.5	-165.70	105.7	-8.4	447.8	437.6	10.12	44.256		
2,200.0	2,133.5	2,132.5	2,132.5	10.5	4.7	-166.60	105.7	-8.4	477.3	466.7	10.61	44.983		
2,300.0	2,228.8	2,227.8	2,227.8	11.1	4.9	-167.39	105.7	-8.4	506.9	495.8	11.10	45.645		
2,400.0	2,324.1	2,323.1	2,323.1	11.7	5.1	-168.10	105.7	-8.4	536.6	525.0	11.60	46.251		
2,500.0	2,419.4	2,418.4	2,418.4	12.4	5.3	-168.73	105.7	-8.4	566.3	554.2	12.10	46.807		
2,600.0	2,514.7	2,513.7	2,513.7	13.0	5.5	-169.30	105.7	-8.4	596.1	583.5	12.60	47.317		
2,700.0	2,610.0	2,609.0	2,609.0	13.6	5.8	-169.81	105.7	-8.4	626.0	612.9	13.10	47.788		
2,800.0	2,705.3	2,704.3	2,704.3	14.3	6.0	-170.28	105.7	-8.4	655.9	642.3	13.60	48.223		
2,900.0	2,800.6	2,799.6	2,799.6	14.9	6.2	-170.71	105.7	-8.4	685.8	671.7	14.10	48.626		
3,000.0	2,895.9	2,894.9	2,894.9	15.6	6.4	-171.10	105.7	-8.4	715.8	701.2	14.61	48.999		
3,100.0	2,991.2	2,990.2	2,990.2	16.2	6.6	-171.46	105.7	-8.4	745.8	730.6	15.11	49.347		
3,200.0	3,086.5	3,085.5	3,085.5	16.8	6.8	-171.79	105.7	-8.4	775.8	760.1	15.62	49.671		
3,300.0	3,181.8	3,180.8	3,180.8	17.5	7.0	-172.10	105.7	-8.4	805.8	789.7	16.12	49.974		
3,400.0	3,277.1	3,276.1	3,276.1	18.1	7.3	-172.38	105.7	-8.4	835.9	819.2	16.63	50.257		
3,500.0	3,372.4	3,371.4	3,371.4	18.8	7.5	-172.65	105.7	-8.4	865.9	848.8	17.14	50.523		
3,600.0	3,467.7	3,466.7	3,466.7	19.4	7.7	-172.90	105.7	-8.4	896.0	878.4	17.65	50.773		
3,700.0	3,563.0	3,562.0	3,562.0	20.0	7.9	-173.13	105.7	-8.4	926.1	908.0	18.16	51.007		
3,800.0	3,658.3	3,657.3	3,657.3	20.7	8.1	-173.35	105.7	-8.4	956.3	937.6	18.67	51.228		
3,900.0	3,753.6	3,752.6	3,752.6	21.3	8.3	-173.55	105.7	-8.4	986.4	967.2	19.18	51.437		
4,000.0	3,848.9	3,847.9	3,847.9	22.0	8.5	-173.74	105.7	-8.4	1,016.5	996.8	19.69	51.634		
4,100.0	3,944.2	3,943.2	3,943.2	22.6	8.8	-173.92	105.7	-8.4	1,046.7	1,026.5	20.20	51.821		
4,200.0	4,039.4	4,038.4	4,038.4	23.2	9.0	-174.09	105.7	-8.4	1,076.8	1,056.1	20.71	51.998		
4,300.0	4,134.7	4,133.7	4,133.7	23.9	9.2	-174.25	105.7	-8.4	1,107.0	1,085.8	21.22	52.165		
4,400.0	4,230.0	4,229.0	4,229.0	24.5	9.4	-174.41	105.7	-8.4	1,137.2	1,115.5	21.73	52.325		
4,500.0	4,325.3	4,324.3	4,324.3	25.2	9.6	-174.55	105.7	-8.4	1,167.4	1,145.1	22.25	52.476		
4,600.0	4,420.6	4,419.6	4,419.6	25.8	9.8	-174.69	105.7	-8.4	1,197.6	1,174.8	22.76	52.620		
4,700.0	4,515.9	4,514.9	4,514.9	26.5	10.0	-174.82	105.7	-8.4	1,227.8	1,204.5	23.27	52.757		
4,800.0	4,611.2	4,610.2	4,610.2	27.1	10.2	-174.94	105.7	-8.4	1,258.0	1,234.2	23.79	52.888		
4,900.0	4,706.5	4,705.5	4,705.5	27.7	10.5	-175.06	105.7	-8.4	1,288.2	1,263.9	24.30	53.013		
5,000.0	4,801.8	4,800.8	4,800.8	28.4	10.7	-175.18	105.7	-8.4	1,318.4	1,293.6	24.81	53.132		
5,100.0	4,897.1	4,896.1	4,896.1	29.0	10.9	-175.28	105.7	-8.4	1,348.6	1,323.3	25.33	53.246		
5,136.3	4,931.7	4,930.7	4,930.7	29.2	11.0	-175.32	105.7	-8.4	1,359.5	1,334.0	25.51	53.286		
5,200.0	4,992.6	4,991.6	4,991.6	29.6	11.1	-175.42	105.7	-8.4	1,378.1	1,352.2	25.89	53.233		
5,300.0	5,089.0	5,088.0	5,088.0	30.0	11.3	-175.55	105.7	-8.4	1,404.6	1,378.1	26.43	53.146		
5,400.0	5,186.3	5,185.3	5,185.3	30.4	11.5	-175.65	105.7	-8.4	1,427.6	1,400.7	26.93	53.011		
5,500.0	5,284.4	5,283.4	5,283.4	30.8	11.8	-175.74	105.7	-8.4	1,447.3	1,419.9	27.39	52.832		
5,600.0	5,383.0	5,382.0	5,382.0	31.1	12.0	-175.81	105.7	-8.4	1,463.5	1,435.7	27.82	52.612		
5,700.0	5,482.2	5,481.2	5,481.2	31.3	12.2	-175.87	105.7	-8.4	1,476.3	1,448.1	28.20	52.353		
5,800.0	5,581.7	5,580.7	5,580.7	31.5	12.4	-175.91	105.7	-8.4	1,485.6	1,457.1	28.54	52.057		
5,900.0	5,681.6	5,680.6	5,680.6	31.7	12.7	-175.93	105.7	-8.4	1,491.5	1,462.7	28.84	51.725		
6,000.0	5,781.5	5,780.5	5,780.5	31.8	12.9	-175.94	105.7	-8.4	1,493.9	1,464.8	29.09	51.357		
6,018.5	5,800.0	5,799.0	5,799.0	31.8	12.9	-94.90	105.7	-8.4	1,493.9	1,464.8	29.13	51.284		
6,100.0	5,881.5	5,880.5	5,880.5	31.8	13.1	-94.90	105.7	-8.4	1,493.9	1,464.5	29.44	50.751		
6,200.0	5,981.5	5,980.5	5,980.5	31.9	13.3	-94.90	105.7	-8.4	1,493.9	1,464.1	29.82	50.105		
6,300.0	6,081.5	6,080.5	6,080.5	32.0	13.6	-94.90	105.7	-8.4	1,493.9	1,463.7	30.20	49.472		
6,400.0	6,181.5	6,180.5	6,180.5	32.1	13.8	-94.90	105.7	-8.4	1,493.9	1,463.4	30.58	48.853		
6,500.0	6,281.5	6,280.5	6,280.5	32.2	14.0	-94.90	105.7	-8.4	1,493.9	1,463.0	30.96	48.247		
6,600.0	6,381.5	6,380.5	6,380.5	32.3	14.2	-94.90	105.7	-8.4	1,493.9	1,462.6	31.35	47.654		
6,700.0	6,481.5	6,480.5	6,480.5	32.4	14.5	-94.90	105.7	-8.4	1,493.9	1,462.2	31.74	47.073		

CC - Min centre to center distance or convergent point, SF - min separation factor, ES - min ellipse separation

<b>Company:</b>	EnCana Oil & Gas Weld County CO	<b>Local Co-ordinate Reference:</b>	Well Diane 8-6-28
<b>Project:</b>	SEC.28-T2N-R66W	<b>TVD Reference:</b>	WELL @ 4982.0ft (Original Well Elev)
<b>Reference Site:</b>	Diane 34-28 Pad Sec.28-T2N-R66W	<b>MD Reference:</b>	WELL @ 4982.0ft (Original Well Elev)
<b>Site Error:</b>	0.0ft	<b>North Reference:</b>	True
<b>Reference Well:</b>	Diane 8-6-28	<b>Survey Calculation Method:</b>	Minimum Curvature
<b>Well Error:</b>	0.0ft	<b>Output errors are at</b>	2.00 sigma
<b>Reference Wellbore</b>	Wellbore #1	<b>Database:</b>	Landmark
<b>Reference Design:</b>	Plan #1 (4-03-12)	<b>Offset TVD Reference:</b>	Offset Datum

<b>Offset Design</b> Diane 34-28 Pad Sec.28-T2N-R66W - Diane #1 (Exist.) - Wellbore #1 - Design #1												<b>Offset Site Error:</b>	0.0 ft
Survey Program: 0-MWD												<b>Offset Well Error:</b>	0.0 ft
Reference		Offset		Semi Major Axis			Distance						
Measured Depth (ft)	Vertical Depth (ft)	Measured Depth (ft)	Vertical Depth (ft)	Reference (ft)	Offset (ft)	Highside Toolface (°)	Offset Wellbore Centre +N/-S (ft)	+E/-W (ft)	Between Centres (ft)	Between Ellipses (ft)	Minimum Separation (ft)	Separation Factor	Warning
6,800.0	6,581.5	6,580.5	6,580.5	32.5	14.7	-94.90	105.7	-8.4	1,493.9	1,461.8	32.13	46.504	
6,900.0	6,681.5	6,680.5	6,680.5	32.6	14.9	-94.90	105.7	-8.4	1,493.9	1,461.4	32.52	45.946	
7,000.0	6,781.5	6,780.5	6,780.5	32.7	15.1	-94.90	105.7	-8.4	1,493.9	1,461.0	32.91	45.400	
7,100.0	6,881.5	6,880.5	6,880.5	32.8	15.4	-94.90	105.7	-8.4	1,493.9	1,460.6	33.30	44.865	
7,200.0	6,981.5	6,980.5	6,980.5	32.9	15.6	-94.90	105.7	-8.4	1,493.9	1,460.3	33.69	44.341	
7,300.0	7,081.5	7,080.5	7,080.5	33.0	15.8	-94.90	105.7	-8.4	1,493.9	1,459.9	34.09	43.827	
7,400.0	7,181.5	7,180.5	7,180.5	33.1	16.0	-94.90	105.7	-8.4	1,493.9	1,459.5	34.48	43.324	
7,500.0	7,281.5	7,280.5	7,280.5	33.2	16.3	-94.90	105.7	-8.4	1,493.9	1,459.1	34.88	42.831	
7,600.0	7,381.5	7,380.5	7,380.5	33.3	16.5	-94.90	105.7	-8.4	1,493.9	1,458.7	35.28	42.348	
7,700.0	7,481.5	7,480.5	7,480.5	33.4	16.7	-94.90	105.7	-8.4	1,493.9	1,458.3	35.68	41.874	
7,800.0	7,581.5	7,580.5	7,580.5	33.5	16.9	-94.90	105.7	-8.4	1,493.9	1,457.9	36.08	41.409	
7,900.0	7,681.5	7,680.5	7,680.5	33.6	17.2	-94.90	105.7	-8.4	1,493.9	1,457.5	36.48	40.953	
8,000.0	7,781.5	7,780.5	7,780.5	33.7	17.4	-94.90	105.7	-8.4	1,493.9	1,457.1	36.88	40.507	
8,100.0	7,881.5	7,880.5	7,880.5	33.8	17.6	-94.90	105.7	-8.4	1,493.9	1,456.7	37.28	40.068	
8,200.0	7,981.5	7,980.5	7,980.5	34.0	17.8	-94.90	105.7	-8.4	1,493.9	1,456.3	37.69	39.639	
8,263.5	8,045.0	8,044.0	8,044.0	34.0	18.0	-94.90	105.7	-8.4	1,493.9	1,456.0	37.95	39.370	

<b>Company:</b>	EnCana Oil & Gas Weld County CO	<b>Local Co-ordinate Reference:</b>	Well Diane 8-6-28
<b>Project:</b>	SEC.28-T2N-R66W	<b>TVD Reference:</b>	WELL @ 4982.0ft (Original Well Elev)
<b>Reference Site:</b>	Diane 34-28 Pad Sec.28-T2N-R66W	<b>MD Reference:</b>	WELL @ 4982.0ft (Original Well Elev)
<b>Site Error:</b>	0.0ft	<b>North Reference:</b>	True
<b>Reference Well:</b>	Diane 8-6-28	<b>Survey Calculation Method:</b>	Minimum Curvature
<b>Well Error:</b>	0.0ft	<b>Output errors are at</b>	2.00 sigma
<b>Reference Wellbore</b>	Wellbore #1	<b>Database:</b>	Landmark
<b>Reference Design:</b>	Plan #1 (4-03-12)	<b>Offset TVD Reference:</b>	Offset Datum

Offset Design												Offset Site Error:	0.0 ft
Survey Program: 0-MWD												Offset Well Error:	0.0 ft
Reference		Offset		Semi Major Axis			Distance						
Measured Depth (ft)	Vertical Depth (ft)	Measured Depth (ft)	Vertical Depth (ft)	Reference (ft)	Offset (ft)	Highside Toolface (°)	Offset Wellbore Centre +N/-S (ft)	+E/-W (ft)	Between Centres (ft)	Between Ellipses (ft)	Minimum Separation (ft)	Separation Factor	Warning
0.0	0.0	2.0	2.0	0.0	0.0	-89.96	0.0	-19.6	19.6	19.6	0.00	8,013.111	
100.0	100.0	102.0	102.0	0.1	0.1	-89.96	0.0	-19.6	19.6	19.4	0.23	85.410	
200.0	200.0	202.0	202.0	0.3	0.3	-89.96	0.0	-19.6	19.6	18.9	0.68	28.847 CC, ES	
300.0	300.0	302.0	302.0	0.6	0.6	-171.74	0.0	-19.6	21.3	20.2	1.13	18.922	
400.0	399.8	401.8	401.8	0.8	0.8	-173.35	0.0	-19.6	26.5	24.9	1.58	16.812 SF	
500.0	499.5	501.5	501.5	1.0	1.0	-174.98	0.0	-19.6	35.2	33.1	2.03	17.314	
600.0	598.7	600.7	600.7	1.3	1.2	-176.26	0.0	-19.6	47.3	44.8	2.49	19.011	
700.0	697.5	699.5	699.5	1.6	1.5	-177.17	0.0	-19.6	62.9	60.0	2.95	21.341	
800.0	795.6	797.6	797.6	2.0	1.7	-177.81	0.0	-19.6	82.0	78.6	3.41	24.038	
900.0	893.1	895.1	895.1	2.5	1.9	-178.27	0.0	-19.6	104.5	100.6	3.88	26.956	
1,000.0	989.6	991.6	991.6	3.0	2.1	-178.60	0.0	-19.6	130.4	126.0	4.34	30.014	
1,082.2	1,068.3	1,070.3	1,070.3	3.4	2.3	-178.81	0.0	-19.6	154.1	149.4	4.73	32.596	
1,100.0	1,085.3	1,087.3	1,087.3	3.6	2.3	-178.85	0.0	-19.6	159.5	154.7	4.81	33.135	
1,200.0	1,180.6	1,179.0	1,179.0	4.2	2.5	-179.28	-0.9	-20.2	190.6	185.3	5.28	36.113	
1,300.0	1,275.9	1,268.8	1,268.8	4.8	2.7	-179.86	-4.0	-22.4	223.8	218.0	5.74	39.013	
1,400.0	1,371.2	1,357.0	1,356.6	5.4	2.9	-178.76	-9.4	-26.2	259.0	252.8	6.20	41.789	
1,500.0	1,466.5	1,443.5	1,442.7	6.0	3.0	-177.55	-16.8	-31.4	296.4	289.8	6.67	44.429	
1,600.0	1,561.8	1,528.2	1,526.6	6.6	3.2	-176.29	-26.1	-38.0	336.0	328.8	7.16	46.937	
1,700.0	1,657.1	1,611.1	1,608.4	7.3	3.4	-175.03	-37.1	-45.8	377.6	370.0	7.66	49.320	
1,800.0	1,752.4	1,692.2	1,688.0	7.9	3.7	-173.80	-49.8	-54.7	421.4	413.2	8.17	51.565	
1,900.0	1,847.6	1,781.1	1,775.0	8.5	4.0	-172.58	-64.7	-65.2	466.3	457.6	8.72	53.485	
2,000.0	1,942.9	1,870.1	1,862.1	9.2	4.3	-171.58	-79.6	-75.7	511.3	502.1	9.27	55.165	
2,100.0	2,038.2	1,959.1	1,949.2	9.8	4.6	-170.74	-94.4	-86.2	556.5	546.6	9.83	56.610	
2,200.0	2,133.5	2,048.0	2,036.3	10.5	4.9	-170.03	-109.3	-96.7	601.7	591.3	10.40	57.852	
2,300.0	2,228.8	2,137.0	2,123.4	11.1	5.3	-169.41	-124.2	-107.2	646.9	636.0	10.97	58.958	
2,400.0	2,324.1	2,225.9	2,210.5	11.7	5.6	-168.88	-139.0	-117.7	692.3	680.7	11.55	59.925	
2,500.0	2,419.4	2,314.9	2,297.5	12.4	6.0	-168.41	-153.9	-128.2	737.6	725.5	12.14	60.780	
2,600.0	2,514.7	2,403.9	2,384.6	13.0	6.3	-167.99	-168.8	-138.6	783.0	770.3	12.72	61.540	
2,700.0	2,610.0	2,492.8	2,471.7	13.6	6.7	-167.62	-183.7	-149.1	828.5	815.2	13.32	62.217	
2,800.0	2,705.3	2,581.8	2,558.8	14.3	7.1	-167.29	-198.5	-159.6	873.9	860.0	13.91	62.826	
2,900.0	2,800.6	2,670.8	2,645.9	14.9	7.5	-166.99	-213.4	-170.1	919.4	904.9	14.51	63.375	
3,000.0	2,895.9	2,759.7	2,732.9	15.6	7.8	-166.72	-228.3	-180.6	964.9	949.8	15.11	63.873	
3,100.0	2,991.2	2,848.7	2,820.0	16.2	8.2	-166.47	-243.1	-191.1	1,010.4	994.7	15.71	64.327	
3,200.0	3,086.5	2,937.6	2,907.1	16.8	8.6	-166.25	-258.0	-201.6	1,056.0	1,039.6	16.31	64.741	
3,300.0	3,181.8	3,026.6	2,994.2	17.5	9.0	-166.04	-272.9	-212.1	1,101.5	1,084.6	16.91	65.121	
3,400.0	3,277.1	3,115.6	3,081.3	18.1	9.4	-165.85	-287.7	-222.6	1,147.0	1,129.5	17.52	65.470	
3,500.0	3,372.4	3,204.5	3,168.3	18.8	9.8	-165.68	-302.6	-233.0	1,192.6	1,174.5	18.13	65.791	
3,600.0	3,467.7	3,293.5	3,255.4	19.4	10.2	-165.51	-317.5	-243.5	1,238.2	1,219.4	18.74	66.088	
3,700.0	3,563.0	3,382.4	3,342.5	20.0	10.5	-165.36	-332.4	-254.0	1,283.7	1,264.4	19.34	66.362	
3,800.0	3,658.3	3,471.4	3,429.6	20.7	10.9	-165.22	-347.2	-264.5	1,329.3	1,309.4	19.95	66.617	
3,900.0	3,753.6	3,560.4	3,516.7	21.3	11.3	-165.09	-362.1	-275.0	1,374.9	1,354.3	20.57	66.855	
4,000.0	3,848.9	3,649.3	3,603.7	22.0	11.7	-164.97	-377.0	-285.5	1,420.5	1,399.3	21.18	67.076	
4,100.0	3,944.2	3,738.3	3,690.8	22.6	12.1	-164.85	-391.8	-296.0	1,466.1	1,444.3	21.79	67.283	
4,200.0	4,039.4	3,827.3	3,777.9	23.2	12.5	-164.74	-406.7	-306.5	1,511.7	1,489.3	22.40	67.477	
4,300.0	4,134.7	3,916.2	3,865.0	23.9	12.9	-164.64	-421.6	-317.0	1,557.3	1,534.3	23.02	67.659	
4,400.0	4,230.0	4,005.2	3,952.1	24.5	13.3	-164.54	-436.4	-327.5	1,602.9	1,579.3	23.63	67.830	
4,500.0	4,325.3	4,094.1	4,039.1	25.2	13.7	-164.45	-451.3	-337.9	1,648.5	1,624.3	24.25	67.990	
4,600.0	4,420.6	4,183.1	4,126.2	25.8	14.1	-164.37	-466.2	-348.4	1,694.2	1,669.3	24.86	68.141	
4,700.0	4,515.9	4,272.1	4,213.3	26.5	14.5	-164.28	-481.1	-358.9	1,739.8	1,714.3	25.48	68.283	
4,800.0	4,611.2	4,361.0	4,300.4	27.1	14.9	-164.21	-495.9	-369.4	1,785.4	1,759.3	26.10	68.418	
4,900.0	4,706.5	4,450.0	4,387.5	27.7	15.3	-164.13	-510.8	-379.9	1,831.0	1,804.3	26.71	68.545	
5,000.0	4,801.8	4,538.9	4,474.5	28.4	15.7	-164.06	-525.7	-390.4	1,876.6	1,849.3	27.33	68.666	

CC - Min centre to center distance or convergent point, SF - min separation factor, ES - min ellipse separation

<b>Company:</b>	EnCana Oil & Gas Weld County CO	<b>Local Co-ordinate Reference:</b>	Well Diane 8-6-28
<b>Project:</b>	SEC.28-T2N-R66W	<b>TVD Reference:</b>	WELL @ 4982.0ft (Original Well Elev)
<b>Reference Site:</b>	Diane 34-28 Pad Sec.28-T2N-R66W	<b>MD Reference:</b>	WELL @ 4982.0ft (Original Well Elev)
<b>Site Error:</b>	0.0ft	<b>North Reference:</b>	True
<b>Reference Well:</b>	Diane 8-6-28	<b>Survey Calculation Method:</b>	Minimum Curvature
<b>Well Error:</b>	0.0ft	<b>Output errors are at</b>	2.00 sigma
<b>Reference Wellbore</b>	Wellbore #1	<b>Database:</b>	Landmark
<b>Reference Design:</b>	Plan #1 (4-03-12)	<b>Offset TVD Reference:</b>	Offset Datum

<b>Offset Design</b>												<b>Offset Site Error:</b>	0.0 ft
Diane 34-28 Pad Sec.28-T2N-R66W - Diane 34-28 - Wellbore #1 - Plan #1 (4-03-12)												<b>Offset Well Error:</b>	0.0 ft
Survey Program: 0-MWD													
Reference		Offset		Semi Major Axis			Distance						
Measured Depth (ft)	Vertical Depth (ft)	Measured Depth (ft)	Vertical Depth (ft)	Reference (ft)	Offset (ft)	Highside Toolface (°)	Offset Wellbore Centre +N/-S (ft)	+E/-W (ft)	Between Centres (ft)	Between Ellipses (ft)	Minimum Separation (ft)	Separation Factor	Warning
5,100.0	4,897.1	4,627.9	4,561.6	29.0	16.1	164.00	-540.5	-400.9	1,922.3	1,894.3	27.95	68.780	
5,136.3	4,931.7	4,660.2	4,593.2	29.2	16.2	163.97	-545.9	-404.7	1,938.8	1,910.6	28.17	68.820	
5,200.0	4,992.6	4,717.2	4,649.0	29.6	16.5	164.10	-555.5	-411.4	1,967.3	1,938.7	28.63	68.721	
5,300.0	5,089.0	4,807.8	4,737.7	30.0	16.9	164.26	-570.6	-422.1	2,009.5	1,980.2	29.29	68.615	
5,400.0	5,186.3	4,899.7	4,827.7	30.4	17.3	164.37	-586.0	-432.9	2,048.6	2,018.7	29.92	68.481	
5,500.0	5,284.4	4,992.9	4,918.9	30.8	17.7	164.43	-601.5	-443.9	2,084.7	2,054.2	30.51	68.323	
5,600.0	5,383.0	5,087.1	5,011.1	31.1	18.2	164.46	-617.3	-455.0	2,117.6	2,086.5	31.07	68.147	
5,700.0	5,482.2	5,351.7	5,272.2	31.3	18.9	164.26	-651.9	-479.4	2,143.6	2,111.7	31.92	67.161	
5,800.0	5,581.7	5,633.6	5,553.4	31.5	19.4	164.28	-667.0	-490.1	2,158.3	2,125.7	32.61	66.188	
5,900.0	5,681.6	5,763.8	5,683.6	31.7	19.6	164.36	-667.3	-490.3	2,164.0	2,131.1	32.94	65.704	
6,000.0	5,781.5	5,863.7	5,783.5	31.8	19.7	164.39	-667.3	-490.3	2,166.3	2,133.2	33.17	65.317	
6,018.5	5,800.0	5,882.2	5,802.0	31.8	19.7	-114.56	-667.3	-490.3	2,166.4	2,133.2	33.21	65.243	
6,100.0	5,881.5	5,963.7	5,883.5	31.8	19.8	-114.56	-667.3	-490.3	2,166.4	2,133.0	33.44	64.780	
6,200.0	5,981.5	6,063.7	5,983.5	31.9	20.0	-114.56	-667.3	-490.3	2,166.4	2,132.7	33.74	64.208	
6,300.0	6,081.5	6,163.7	6,083.5	32.0	20.1	-114.56	-667.3	-490.3	2,166.4	2,132.4	34.04	63.639	
6,400.0	6,181.5	6,263.7	6,183.5	32.1	20.2	-114.56	-667.3	-490.3	2,166.4	2,132.1	34.35	63.074	
6,500.0	6,281.5	6,363.7	6,283.5	32.2	20.3	-114.56	-667.3	-490.3	2,166.4	2,131.7	34.65	62.514	
6,600.0	6,381.5	6,463.7	6,383.5	32.3	20.5	-114.56	-667.3	-490.3	2,166.4	2,131.4	34.97	61.958	
6,700.0	6,481.5	6,563.7	6,483.5	32.4	20.6	-114.56	-667.3	-490.3	2,166.4	2,131.1	35.28	61.406	
6,800.0	6,581.5	6,663.7	6,583.5	32.5	20.7	-114.56	-667.3	-490.3	2,166.4	2,130.8	35.60	60.860	
6,900.0	6,681.5	6,763.7	6,683.5	32.6	20.9	-114.56	-667.3	-490.3	2,166.4	2,130.5	35.92	60.318	
7,000.0	6,781.5	6,863.7	6,783.5	32.7	21.0	-114.56	-667.3	-490.3	2,166.4	2,130.2	36.24	59.781	
7,100.0	6,881.5	6,963.7	6,883.5	32.8	21.1	-114.56	-667.3	-490.3	2,166.4	2,129.8	36.56	59.250	
7,200.0	6,981.5	7,063.7	6,983.5	32.9	21.3	-114.56	-667.3	-490.3	2,166.4	2,129.5	36.89	58.723	
7,300.0	7,081.5	7,163.7	7,083.5	33.0	21.4	-114.56	-667.3	-490.3	2,166.4	2,129.2	37.22	58.202	
7,400.0	7,181.5	7,263.7	7,183.5	33.1	21.6	-114.56	-667.3	-490.3	2,166.4	2,128.8	37.55	57.687	
7,500.0	7,281.5	7,363.7	7,283.5	33.2	21.7	-114.56	-667.3	-490.3	2,166.4	2,128.5	37.89	57.176	
7,600.0	7,381.5	7,463.7	7,383.5	33.3	21.8	-114.56	-667.3	-490.3	2,166.4	2,128.2	38.23	56.672	
7,700.0	7,481.5	7,563.7	7,483.5	33.4	22.0	-114.56	-667.3	-490.3	2,166.4	2,127.8	38.57	56.172	
7,800.0	7,581.5	7,663.7	7,583.5	33.5	22.1	-114.56	-667.3	-490.3	2,166.4	2,127.5	38.91	55.679	
7,900.0	7,681.5	7,763.7	7,683.5	33.6	22.3	-114.56	-667.3	-490.3	2,166.4	2,127.1	39.25	55.190	
8,000.0	7,781.5	7,863.7	7,783.5	33.7	22.4	-114.56	-667.3	-490.3	2,166.4	2,126.8	39.60	54.708	
8,100.0	7,881.5	7,963.7	7,883.5	33.8	22.6	-114.56	-667.3	-490.3	2,166.4	2,126.5	39.95	54.231	
8,200.0	7,981.5	8,063.7	7,983.5	34.0	22.7	-114.56	-667.3	-490.3	2,166.4	2,126.1	40.30	53.759	
8,263.5	8,045.0	8,127.2	8,047.0	34.0	22.8	-114.56	-667.3	-490.3	2,166.4	2,125.9	40.52	53.463	

<b>Company:</b>	EnCana Oil & Gas Weld County CO	<b>Local Co-ordinate Reference:</b>	Well Diane 8-6-28
<b>Project:</b>	SEC.28-T2N-R66W	<b>TVD Reference:</b>	WELL @ 4982.0ft (Original Well Elev)
<b>Reference Site:</b>	Diane 34-28 Pad Sec.28-T2N-R66W	<b>MD Reference:</b>	WELL @ 4982.0ft (Original Well Elev)
<b>Site Error:</b>	0.0ft	<b>North Reference:</b>	True
<b>Reference Well:</b>	Diane 8-6-28	<b>Survey Calculation Method:</b>	Minimum Curvature
<b>Well Error:</b>	0.0ft	<b>Output errors are at</b>	2.00 sigma
<b>Reference Wellbore</b>	Wellbore #1	<b>Database:</b>	Landmark
<b>Reference Design:</b>	Plan #1 (4-03-12)	<b>Offset TVD Reference:</b>	Offset Datum

Offset Design													Offset Site Error:	0.0 ft
Survey Program: 0-MWD													Offset Well Error:	0.0 ft
Reference		Offset		Semi Major Axis			Distance							Warning
Measured Depth (ft)	Vertical Depth (ft)	Measured Depth (ft)	Vertical Depth (ft)	Reference (ft)	Offset (ft)	Highside Toolface (°)	Offset Wellbore Centre +N/-S (ft)	+E/-W (ft)	Between Centres (ft)	Between Ellipses (ft)	Minimum Separation (ft)	Separation Factor		
0.0	0.0	0.0	0.0	0.0	0.0	-89.96	0.0	-11.2	11.2	11.2	0.00	N/A		
100.0	100.0	100.0	100.0	0.1	0.1	-89.96	0.0	-11.2	11.2	11.0	0.22	49.782		
200.0	200.0	200.0	200.0	0.3	0.3	-89.96	0.0	-11.2	11.2	10.5	0.67	16.594 CC		
300.0	300.0	300.3	300.3	0.6	0.6	-166.77	1.1	-9.8	11.6	10.5	1.12	10.406 ES		
400.0	399.8	400.5	400.4	0.8	0.8	-155.95	4.5	-5.8	13.2	11.6	1.56	8.449		
500.0	499.5	500.7	500.1	1.0	1.0	-143.26	10.1	0.9	16.5	14.5	2.04	8.106 SF		
600.0	598.7	600.6	599.3	1.3	1.3	-132.67	18.0	10.2	22.0	19.5	2.59	8.515		
700.0	697.5	700.0	697.5	1.6	1.6	-125.13	28.0	22.2	29.7	26.5	3.23	9.213		
800.0	795.6	798.6	794.4	2.0	2.0	-121.80	40.5	34.5	41.2	37.2	3.93	10.470		
900.0	893.1	895.6	889.6	2.5	2.3	-121.97	55.8	45.2	57.7	53.0	4.68	12.336		
1,000.0	989.6	991.0	982.9	3.0	2.7	-123.32	73.6	54.3	79.3	73.8	5.48	14.481		
1,082.2	1,068.3	1,068.0	1,057.9	3.4	3.0	-124.60	90.1	60.6	100.8	94.6	6.17	16.339		
1,100.0	1,085.3	1,084.5	1,073.9	3.6	3.1	-124.93	93.9	61.8	105.8	99.5	6.32	16.746		
1,200.0	1,180.6	1,176.2	1,162.6	4.2	3.5	-126.06	116.3	67.8	136.0	128.8	7.20	18.891		
1,300.0	1,275.9	1,266.1	1,249.0	4.8	4.0	-126.40	140.7	72.4	169.1	160.9	8.11	20.847		
1,400.0	1,371.2	1,354.1	1,332.9	5.4	4.4	-126.34	167.0	75.6	204.8	195.8	9.04	22.663		
1,500.0	1,466.5	1,443.5	1,417.5	6.0	4.9	-126.07	195.7	77.8	242.9	232.9	10.00	24.294		
1,600.0	1,561.8	1,535.8	1,504.8	6.6	5.5	-125.84	225.7	79.9	281.3	270.4	10.97	25.653		
1,700.0	1,657.1	1,628.1	1,592.1	7.3	6.0	-125.67	255.7	81.9	319.8	307.8	11.94	26.773		
1,800.0	1,752.4	1,720.4	1,679.4	7.9	6.6	-125.54	285.6	84.0	358.2	345.3	12.92	27.714		
1,900.0	1,847.6	1,812.8	1,766.7	8.5	7.1	-125.43	315.6	86.1	396.6	382.7	13.91	28.513		
2,000.0	1,942.9	1,905.1	1,854.0	9.2	7.7	-125.34	345.6	88.2	435.1	420.2	14.90	29.201		
2,100.0	2,038.2	1,997.4	1,941.3	9.8	8.3	-125.26	375.5	90.3	473.5	457.6	15.89	29.798		
2,200.0	2,133.5	2,089.7	2,028.6	10.5	8.9	-125.20	405.5	92.4	511.9	495.0	16.88	30.320		
2,300.0	2,228.8	2,182.0	2,115.9	11.1	9.4	-125.14	435.5	94.5	550.4	532.5	17.88	30.782		
2,400.0	2,324.1	2,274.3	2,203.2	11.7	10.0	-125.09	465.5	96.5	588.8	569.9	18.88	31.192		
2,500.0	2,419.4	2,366.7	2,290.5	12.4	10.6	-125.05	495.4	98.6	627.2	607.4	19.88	31.559		
2,600.0	2,514.7	2,459.0	2,377.8	13.0	11.2	-125.01	525.4	100.7	665.7	644.8	20.87	31.889		
2,700.0	2,610.0	2,551.3	2,465.1	13.6	11.8	-124.98	555.4	102.8	704.1	682.2	21.88	32.187		
2,800.0	2,705.3	2,643.6	2,552.3	14.3	12.3	-124.95	585.3	104.9	742.6	719.7	22.88	32.458		
2,900.0	2,800.6	2,735.9	2,639.6	14.9	12.9	-124.92	615.3	107.0	781.0	757.1	23.88	32.706		
3,000.0	2,895.9	2,828.2	2,726.9	15.6	13.5	-124.90	645.3	109.1	819.4	794.5	24.88	32.932		
3,100.0	2,991.2	2,920.6	2,814.2	16.2	14.1	-124.88	675.2	111.1	857.9	832.0	25.89	33.140		
3,200.0	3,086.5	3,012.9	2,901.5	16.8	14.7	-124.86	705.2	113.2	896.3	869.4	26.89	33.332		
3,300.0	3,181.8	3,105.2	2,988.8	17.5	15.3	-124.84	735.2	115.3	934.7	906.8	27.89	33.509		
3,400.0	3,277.1	3,197.5	3,076.1	18.1	15.9	-124.82	765.1	117.4	973.2	944.3	28.90	33.674		
3,500.0	3,372.4	3,289.8	3,163.4	18.8	16.4	-124.81	795.1	119.5	1,011.6	981.7	29.91	33.827		
3,600.0	3,467.7	3,382.1	3,250.7	19.4	17.0	-124.79	825.1	121.6	1,050.1	1,019.1	30.91	33.970		
3,700.0	3,563.0	3,474.5	3,338.0	20.0	17.6	-124.78	855.0	123.7	1,088.5	1,056.6	31.92	34.103		
3,800.0	3,658.3	3,566.8	3,425.3	20.7	18.2	-124.76	885.0	125.7	1,126.9	1,094.0	32.92	34.228		
3,900.0	3,753.6	3,659.1	3,512.6	21.3	18.8	-124.75	915.0	127.8	1,165.4	1,131.4	33.93	34.345		
4,000.0	3,848.9	3,751.4	3,599.8	22.0	19.4	-124.74	945.0	129.9	1,203.8	1,168.9	34.94	34.455		
4,100.0	3,944.2	3,843.7	3,687.1	22.6	20.0	-124.73	974.9	132.0	1,242.3	1,206.3	35.95	34.558		
4,200.0	4,039.4	3,936.0	3,774.4	23.2	20.6	-124.72	1,004.9	134.1	1,280.7	1,243.7	36.95	34.656		
4,300.0	4,134.7	4,028.4	3,861.7	23.9	21.2	-124.71	1,034.9	136.2	1,319.1	1,281.2	37.96	34.749		
4,400.0	4,230.0	4,120.7	3,949.0	24.5	21.8	-124.70	1,064.8	138.3	1,357.6	1,318.6	38.97	34.836		
4,500.0	4,325.3	4,213.0	4,036.3	25.2	22.4	-124.69	1,094.8	140.3	1,396.0	1,356.0	39.98	34.919		
4,600.0	4,420.6	4,305.3	4,123.6	25.8	22.9	-124.69	1,124.8	142.4	1,434.5	1,393.5	40.99	34.997		
4,700.0	4,515.9	4,397.6	4,210.9	26.5	23.5	-124.68	1,154.7	144.5	1,472.9	1,430.9	42.00	35.072		
4,800.0	4,611.2	4,489.9	4,298.2	27.1	24.1	-124.67	1,184.7	146.6	1,511.3	1,468.3	43.01	35.143		
4,900.0	4,706.5	4,582.3	4,385.5	27.7	24.7	-124.67	1,214.7	148.7	1,549.8	1,505.8	44.01	35.210		
5,000.0	4,801.8	4,674.6	4,472.8	28.4	25.3	-124.66	1,244.6	150.8	1,588.2	1,543.2	45.02	35.275		

CC - Min centre to center distance or convergent point, SF - min separation factor, ES - min ellipse separation

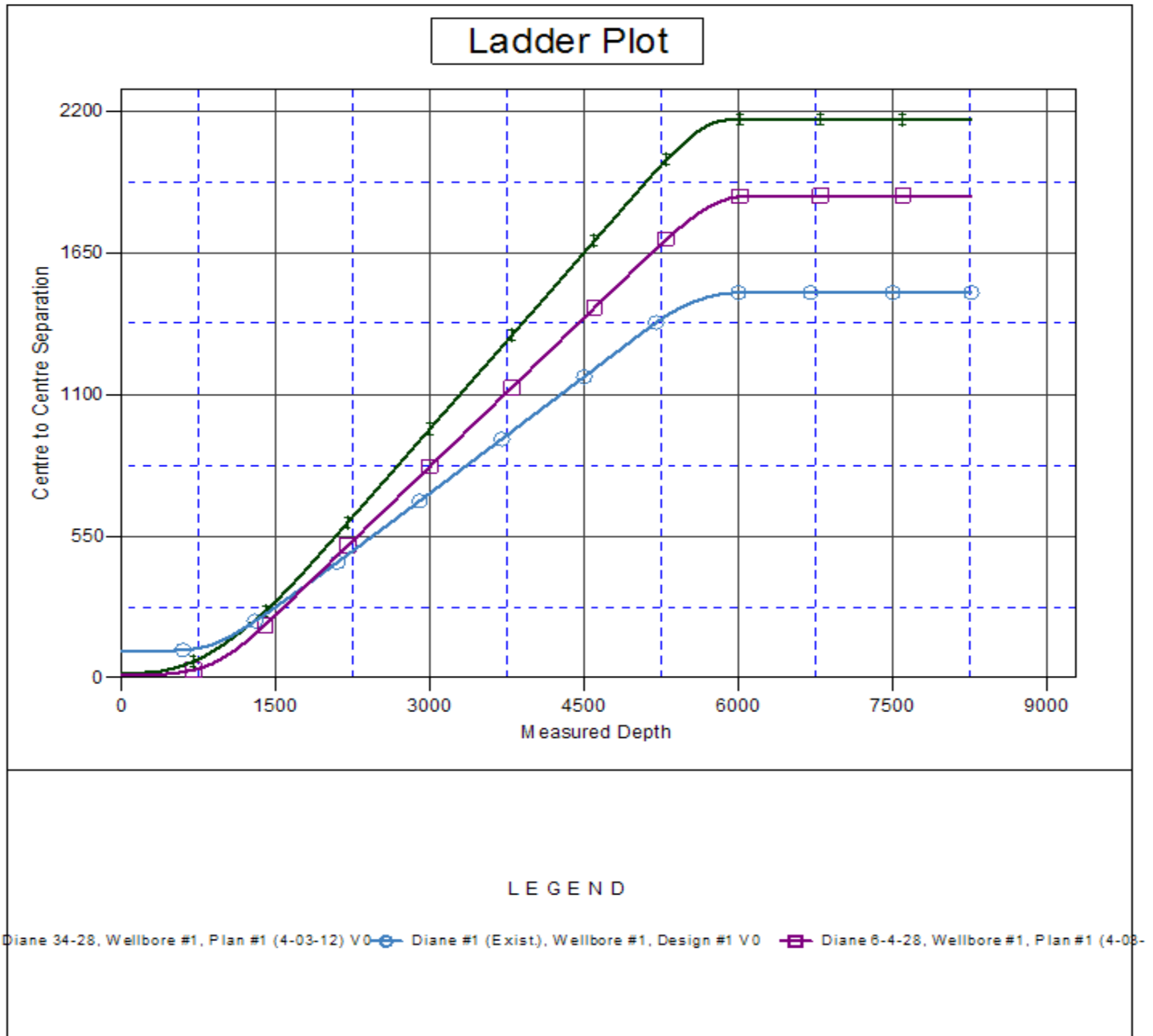


<b>Company:</b>	EnCana Oil & Gas Weld County CO	<b>Local Co-ordinate Reference:</b>	Well Diane 8-6-28
<b>Project:</b>	SEC.28-T2N-R66W	<b>TVD Reference:</b>	WELL @ 4982.0ft (Original Well Elev)
<b>Reference Site:</b>	Diane 34-28 Pad Sec.28-T2N-R66W	<b>MD Reference:</b>	WELL @ 4982.0ft (Original Well Elev)
<b>Site Error:</b>	0.0ft	<b>North Reference:</b>	True
<b>Reference Well:</b>	Diane 8-6-28	<b>Survey Calculation Method:</b>	Minimum Curvature
<b>Well Error:</b>	0.0ft	<b>Output errors are at</b>	2.00 sigma
<b>Reference Wellbore</b>	Wellbore #1	<b>Database:</b>	Landmark
<b>Reference Design:</b>	Plan #1 (4-03-12)	<b>Offset TVD Reference:</b>	Offset Datum

Offset Design		Diane 34-28 Pad Sec.28-T2N-R66W - Diane 6-4-28 - Wellbore #1 - Plan #1 (4-03-12)										Offset Site Error:		0.0 ft
Survey Program: 0-MWD												Offset Well Error:		0.0 ft
Reference		Offset		Semi Major Axis			Distance							Warning
Measured Depth	Vertical Depth	Measured Depth	Vertical Depth	Reference	Offset	Highside Toolface	Offset Wellbore Centre		Between Centres	Between Ellipses	Minimum Separation	Separation Factor		
(ft)	(ft)	(ft)	(ft)	(ft)	(ft)	(°)	+N/-S (ft)	+E/-W (ft)	(ft)	(ft)	(ft)			
5,100.0	4,897.1	4,766.9	4,560.1	29.0	25.9	-124.65	1,274.6	152.9	1,626.7	1,580.6	46.03	35.336		
5,136.3	4,931.7	4,800.4	4,591.7	29.2	26.1	-124.65	1,285.5	153.6	1,640.6	1,594.2	46.40	35.358		
5,200.0	4,992.6	4,859.4	4,647.5	29.6	26.5	-125.05	1,304.6	154.9	1,664.7	1,617.6	47.09	35.353		
5,300.0	5,089.0	4,952.5	4,735.5	30.0	27.1	-125.57	1,334.8	157.0	1,701.0	1,653.0	48.08	35.376		
5,400.0	5,186.3	5,046.1	4,824.1	30.4	27.7	-125.95	1,365.3	159.2	1,735.5	1,686.5	49.04	35.392		
5,500.0	5,284.4	5,140.3	4,913.1	30.8	28.3	-126.20	1,395.8	161.3	1,768.0	1,718.1	49.94	35.403		
5,600.0	5,383.0	5,260.0	5,026.6	31.1	29.0	-126.23	1,434.1	164.0	1,798.4	1,747.6	50.85	35.366		
5,700.0	5,482.2	5,423.6	5,183.7	31.3	29.7	-126.07	1,479.3	167.1	1,824.1	1,772.3	51.77	35.237		
5,800.0	5,581.7	5,591.8	5,347.7	31.5	30.3	-125.90	1,516.5	169.7	1,844.1	1,791.5	52.55	35.091		
5,900.0	5,681.6	5,763.9	5,517.5	31.7	30.8	-125.73	1,544.5	171.6	1,858.3	1,805.1	53.19	34.940		
6,000.0	5,781.5	5,938.7	5,691.3	31.8	31.2	-125.55	1,562.5	172.9	1,866.5	1,812.9	53.66	34.782		
6,018.5	5,800.0	5,971.2	5,723.7	31.8	31.3	-44.47	1,564.7	173.0	1,867.4	1,813.6	53.73	34.752		
6,100.0	5,881.5	6,115.0	5,867.4	31.8	31.5	-44.35	1,569.9	173.4	1,869.4	1,815.4	54.00	34.621		
6,200.0	5,981.5	6,229.1	5,981.5	31.9	31.6	-44.34	1,570.1	173.4	1,869.4	1,815.2	54.20	34.488		
6,300.0	6,081.5	6,329.1	6,081.5	32.0	31.6	-44.34	1,570.1	173.4	1,869.4	1,815.0	54.41	34.361		
6,400.0	6,181.5	6,429.1	6,181.5	32.1	31.7	-44.34	1,570.1	173.4	1,869.4	1,814.8	54.61	34.233		
6,500.0	6,281.5	6,529.1	6,281.5	32.2	31.8	-44.34	1,570.1	173.4	1,869.4	1,814.6	54.81	34.104		
6,600.0	6,381.5	6,629.1	6,381.5	32.3	31.9	-44.34	1,570.1	173.4	1,869.4	1,814.4	55.02	33.975		
6,700.0	6,481.5	6,729.1	6,481.5	32.4	32.0	-44.34	1,570.1	173.4	1,869.4	1,814.2	55.24	33.844		
6,800.0	6,581.5	6,829.1	6,581.5	32.5	32.1	-44.34	1,570.1	173.4	1,869.4	1,814.0	55.45	33.713		
6,900.0	6,681.5	6,929.1	6,681.5	32.6	32.2	-44.34	1,570.1	173.4	1,869.4	1,813.8	55.67	33.581		
7,000.0	6,781.5	7,029.1	6,781.5	32.7	32.3	-44.34	1,570.1	173.4	1,869.4	1,813.5	55.89	33.449		
7,100.0	6,881.5	7,129.1	6,881.5	32.8	32.4	-44.34	1,570.1	173.4	1,869.4	1,813.3	56.11	33.315		
7,200.0	6,981.5	7,229.1	6,981.5	32.9	32.5	-44.34	1,570.1	173.4	1,869.4	1,813.1	56.34	33.182		
7,300.0	7,081.5	7,329.1	7,081.5	33.0	32.6	-44.34	1,570.1	173.4	1,869.4	1,812.9	56.57	33.048		
7,400.0	7,181.5	7,429.1	7,181.5	33.1	32.7	-44.34	1,570.1	173.4	1,869.4	1,812.6	56.80	32.913		
7,500.0	7,281.5	7,529.1	7,281.5	33.2	32.8	-44.34	1,570.1	173.4	1,869.4	1,812.4	57.03	32.778		
7,600.0	7,381.5	7,629.1	7,381.5	33.3	32.9	-44.34	1,570.1	173.4	1,869.4	1,812.2	57.27	32.643		
7,700.0	7,481.5	7,729.1	7,481.5	33.4	33.0	-44.34	1,570.1	173.4	1,869.4	1,811.9	57.51	32.507		
7,800.0	7,581.5	7,829.1	7,581.5	33.5	33.1	-44.34	1,570.1	173.4	1,869.4	1,811.7	57.75	32.371		
7,900.0	7,681.5	7,929.1	7,681.5	33.6	33.2	-44.34	1,570.1	173.4	1,869.4	1,811.4	57.99	32.235		
8,000.0	7,781.5	8,029.1	7,781.5	33.7	33.3	-44.34	1,570.1	173.4	1,869.4	1,811.2	58.24	32.099		
8,100.0	7,881.5	8,129.1	7,881.5	33.8	33.4	-44.34	1,570.1	173.4	1,869.4	1,810.9	58.49	31.962		
8,200.0	7,981.5	8,229.1	7,981.5	34.0	33.5	-44.34	1,570.1	173.4	1,869.4	1,810.7	58.74	31.825		
8,263.5	8,045.0	8,292.6	8,045.0	34.0	33.6	-44.34	1,570.1	173.4	1,869.4	1,810.5	58.90	31.738		

<b>Company:</b>	EnCana Oil & Gas Weld County CO	<b>Local Co-ordinate Reference:</b>	Well Diane 8-6-28
<b>Project:</b>	SEC.28-T2N-R66W	<b>TVD Reference:</b>	WELL @ 4982.0ft (Original Well Elev)
<b>Reference Site:</b>	Diane 34-28 Pad Sec.28-T2N-R66W	<b>MD Reference:</b>	WELL @ 4982.0ft (Original Well Elev)
<b>Site Error:</b>	0.0ft	<b>North Reference:</b>	True
<b>Reference Well:</b>	Diane 8-6-28	<b>Survey Calculation Method:</b>	Minimum Curvature
<b>Well Error:</b>	0.0ft	<b>Output errors are at</b>	2.00 sigma
<b>Reference Wellbore</b>	Wellbore #1	<b>Database:</b>	Landmark
<b>Reference Design:</b>	Plan #1 (4-03-12)	<b>Offset TVD Reference:</b>	Offset Datum

Reference Depths are relative to WELL @ 4982.0ft (Original Well Elev) Coordinates are relative to: Diane 8-6-28  
 Offset Depths are relative to Offset Datum  
 Central Meridian is -105.500000 °  
 Coordinate System is US State Plane 1983, Colorado Northern Zone  
 Grid Convergence at Surface is: 0.47°



<b>Company:</b>	EnCana Oil & Gas Weld County CO	<b>Local Co-ordinate Reference:</b>	Well Diane 8-6-28
<b>Project:</b>	SEC.28-T2N-R66W	<b>TVD Reference:</b>	WELL @ 4982.0ft (Original Well Elev)
<b>Reference Site:</b>	Diane 34-28 Pad Sec.28-T2N-R66W	<b>MD Reference:</b>	WELL @ 4982.0ft (Original Well Elev)
<b>Site Error:</b>	0.0ft	<b>North Reference:</b>	True
<b>Reference Well:</b>	Diane 8-6-28	<b>Survey Calculation Method:</b>	Minimum Curvature
<b>Well Error:</b>	0.0ft	<b>Output errors are at</b>	2.00 sigma
<b>Reference Wellbore</b>	Wellbore #1	<b>Database:</b>	Landmark
<b>Reference Design:</b>	Plan #1 (4-03-12)	<b>Offset TVD Reference:</b>	Offset Datum

Reference Depths are relative to WELL @ 4982.0ft (Original Well Elev) Coordinates are relative to: Diane 8-6-28  
Offset Depths are relative to Offset Datum Coordinate System is US State Plane 1983, Colorado Northern Zone  
Central Meridian is -105.500000 ° Grid Convergence at Surface is: 0.47°

