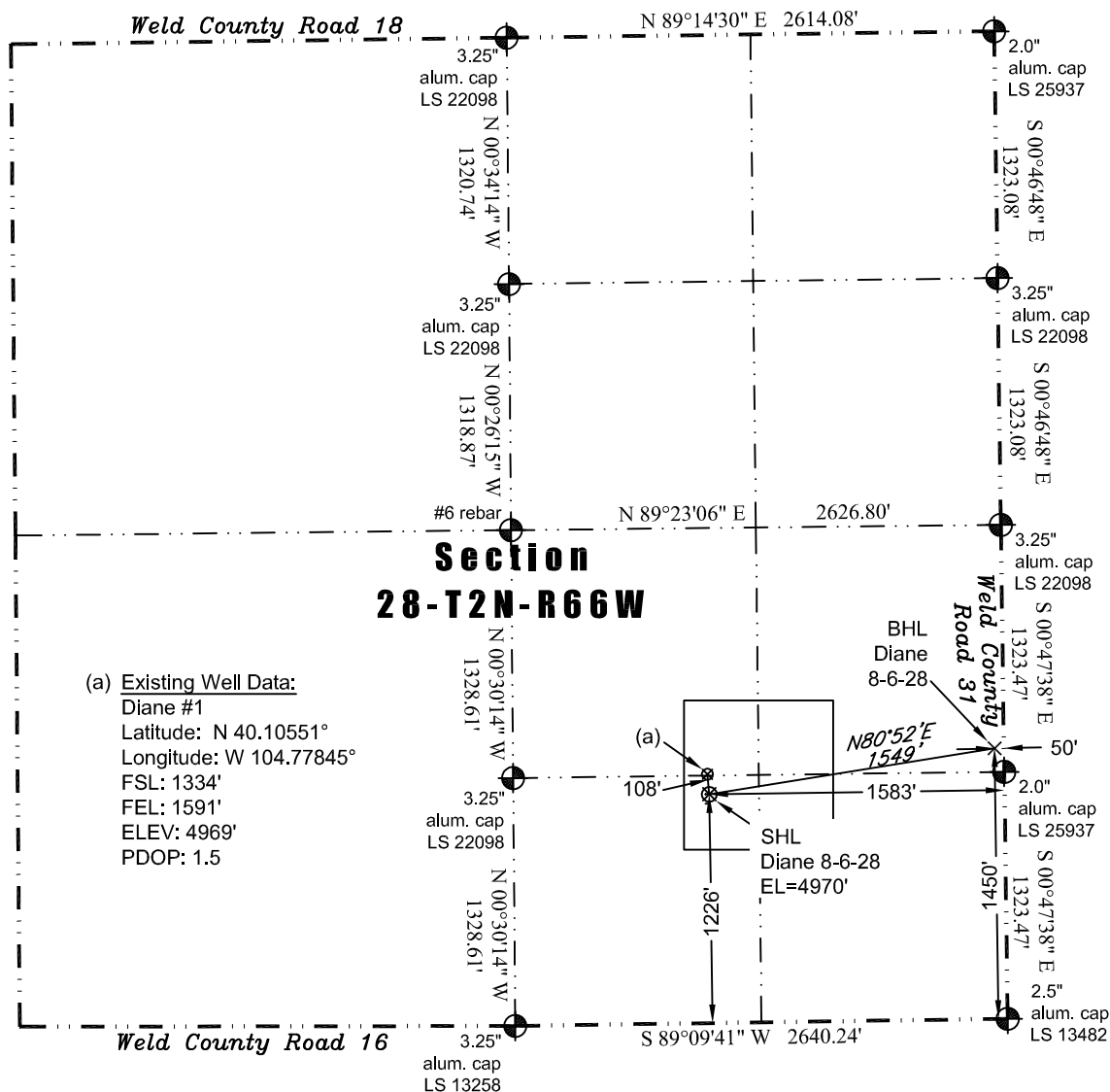


PLS Group, LLC  
109 Coronado Ct. - Bldg. 7  
Fort Collins, Colorado 80525  
P. 970-282-3446 Fx. 970-377-6767

# WELL LOCATION CERTIFICATE

THIS MAP DOES NOT REPRESENT A BOUNDARY SURVEY



Scale 1" = 1000'

1000'

approximate scale

LEGEND

— found survey monument

— calculated dimension

(c)

In accordance with a request from Jay Knutson of EnCana Oil & Gas (USA) Inc., PLS Group, LLC has determined the location of the **Diane 8-6-28** well site to be SHL: 1226' FSL and 1583' FEL, (BHL 1450' FSL and 50' FEL), as measured at ninety (90) degrees from the section lines of Section 28, Township 2 North, Range 66 West of the 6th Principal Meridian, Weld County Colorado.

## Proposed Surface Hole Data:

Latitude: N 40.10522° (BHL: 40.10586°)  
Longitude: W 104.77842° (BHL: 104.77295°)  
PDOP: 1.6

## Nearest:

Building 587' northwest  
Public Road 1,211' south  
Property Line 100' north  
Existing Well: Diane #1 108' northwest

Above Ground Utility 840' northwest  
Railroad 8,380' west  
Well Window: SHL is 135' inside

I hereby certify that this Well Location Certificate was prepared by me or under my direct supervision on 10/10/2011 for and on behalf of EnCana Oil & Gas (USA) Inc. That it is not a Land Survey Plat or an Improvement Survey Plat and that it is not to be relied upon for establishment of fences, buildings, or other future improvement lines.

John Robert McGehee LS#38219  
Well: Diane 8-6-28 WLC