

**HALLIBURTON**

---

# **WILLIAMS PRODUCTION RMT INC - EBUS**

---

**GM 312-23  
GRAND VALLEY  
Garfield County , Colorado**

## **Cement Surface Casing** **30-Jul-2011**

### **Post Job Summary**

## The Road to Excellence Starts with Safety

Sold To #: 300721	Ship To #: 2867040	Quote #:	Sales Order #: 8335125
Customer: WILLIAMS PRODUCTION RMT INC - EBUS	Customer Rep: Klatt, Brian		
Well Name: GM	Well #: 312-23	API/UWI #: 05-045-20477	
Field: GRAND VALLEY	City (SAP): PARACHUTE	County/Parish: Garfield	State: Colorado
Lat: N 39.506 deg. OR N 39 deg. 30 min. 22.72 secs.	Long: W 108.083 deg. OR W -109 deg. 55 min. 0.592 secs.		
Contractor: Nabors Industries LTD.	Rig/Platform Name/Num: Nabors 576		
Job Purpose: Cement Surface Casing			
Well Type: Development Well	Job Type: Cement Surface Casing		
Sales Person: SCOTT, KYLE	Srv Supervisor: PONDER, THOMAS	MBU ID Emp #: 427112	

### Job Personnel

HES Emp Name	Exp Hrs	Emp #	HES Emp Name	Exp Hrs	Emp #	HES Emp Name	Exp Hrs	Emp #
ANGLESTEIN, TROY Edward WM	7	436099	BORSZICH, STEPHEN A	7	412388	PONDER, THOMAS Lynn	7	427112
SINCLAIR, DAN J	7	338784						

### Equipment

HES Unit #	Distance-1 way	HES Unit #	Distance-1 way	HES Unit #	Distance-1 way	HES Unit #	Distance-1 way
10867094	60 mile	10871245	60 mile	10897925	60 mile	11259886	60 mile
11360881	60 mile						

### Job Hours

Date	On Location Hours	Operating Hours	Date	On Location Hours	Operating Hours	Date	On Location Hours	Operating Hours
07/30/2011	7	3						

TOTAL Total is the sum of each column separately

### Job

Formation Name	Top	Bottom	Called Out	Date	Time	Time Zone
Formation Depth (MD)			On Location	29 - Jul - 2011	21:00	MST
Form Type		BHST	Job Started	30 - Jul - 2011	01:00	MST
Job depth MD	903. ft	Job Depth TVD	Job Completed	30 - Jul - 2011	05:46	MST
Water Depth		Wk Ht Above Floor	Departed Loc	30 - Jul - 2011	07:00	MST
Perforation Depth (MD)	From	To			09:00	MST

### Well Data

Description	New / Used	Max pressure psig	Size in	ID in	Weight lbm/ft	Thread	Grade	Top MD ft	Bottom MD ft	Top TVD ft	Bottom TVD ft
13 1/2" Open Hole				13.5				.	890.		
9 5/8" Surface Casing	New		9.625	9.001	32.3		H-40	.	890.		

### Sales/Rental/3<sup>rd</sup> Party (HES)

Description	Qty	Qty uom	Depth	Supplier
PLUG,CMTG,TOP,9 5/8,HWE,8.16 MIN/9.06 MA	1	EA		

### Tools and Accessories

Type	Size	Qty	Make	Depth	Type	Size	Qty	Make	Depth	Type	Size	Qty	Make
Guide Shoe					Packer					Top Plug	9 5/8	1	HES
Float Shoe					Bridge Plug					Bottom Plug			
Float Collar					Retainer					SSR plug set			
Insert Float										Plug Container	9 5/8	1	HES
Stage Tool										Centralizers			

### Miscellaneous Materials

Gelling Agt	Conc	Surfactant	Conc	Acid Type	Qty	Conc	%
Treatment Fld	Conc	Inhibitor	Conc	Sand Type	Size	Qty	

### Fluid Data

Stage/Plug #: 1

## Cementing Job Summary

Fluid #	Stage Type	Fluid Name	Qty	Qty uom	Mixing Density lbm/gal	Yield ft <sup>3</sup> /sk	Mix Fluid Gal/sk	Rate bbl/min	Total Mix Fluid Gal/sk
1	Water Spacer		20.00	bbl	8.33	.0	.0	.0	
2	VersaCem Tail	VERSACEM (TM) SYSTEM (452010)	240.0	sacks	12.8	2.11	11.75		11.75
		11.75 Gal FRESH WATER							
3	Displacement Fluid		68.00	bbl	8.34	.0	.0	.0	
<b>Calculated Values</b>		<b>Pressures</b>		<b>Volumes</b>					
Displacement	67.7	Shut In: Instant		Lost Returns		Cement Slurry	81.5	Pad	
Top Of Cement	SURFACE	5 Min		Cement Returns	5	Actual Displacement	67.7	Treatment	
Frac Gradient		15 Min		Spacers	20	Load and Breakdown		Total Job	1808
<b>Rates</b>									
Circulating	10	Mixing	3	Displacement	10	Avg. Job	3		
Cement Left In Pipe	Amount	0 ft	Reason	Shoe Joint					
Frac Ring # 1 @	ID	Frac ring # 2 @	ID	Frac Ring # 3 @	ID	Frac Ring # 4 @	ID		
The Information Stated Herein Is Correct				Customer Representative Signature					



*The Road to Excellence Starts with Safety*

Sold To #: 300721	Ship To #: 2867040	Quote #:	Sales Order #: 8335125
Customer: WILLIAMS PRODUCTION RMT INC - EBUS	Customer Rep: Klatt, Brian		
Well Name: GM	Well #: 312-23	API/UWI #: 05-045-20477	
Field: GRAND VALLEY	City (SAP): PARACHUTE	County/Parish: Garfield	State: Colorado
Legal Description:			
Lat: N 39.506 deg. OR N 39 deg. 30 min. 22.72 secs.		Long: W 108.083 deg. OR W -109 deg. 55 min. 0.592 secs.	
Contractor: Nabors Industries LTD.	Rig/Platform Name/Num: Nabors 576		
Job Purpose: Cement Surface Casing	Ticket Amount:		
Well Type: Development Well	Job Type: Cement Surface Casing		
Sales Person: SCOTT, KYLE	Srv Supervisor: PONDER, THOMAS	MBU ID Emp #: 427112	

Activity Description	Date/Time	Cht #	Rate bbl/min	Volume bbl		Pressure psig		Comments
				Stage	Total	Tubing	Casing	
Call Out	07/29/2011 21:00							
Crew Leave Yard	07/29/2011 23:30							ALL HES PRESENT FOR PRE-CONVOY SAFETY HUDDLE
Arrive At Loc	07/30/2011 01:00							RIG WAS STILL RUNNING CASING WHEN CREW ARRIVED ON LOCATION
Assessment Of Location Safety Meeting	07/30/2011 03:30							TD- 918', TP- 903', SJ- 42.45', MUD- 10.5 PPG, HOLE- 13 1/2", SURFACE CASING- 9 5/8" 32.3# H-40
Rig-Up Equipment	07/30/2011 04:00							RIG STARTED CIRCULATION ON BOTTOM @
Safety Meeting	07/30/2011 05:00							ALL HES PRESENT, RIG CREW PRESENT
Start Job	07/30/2011 05:46							
Other	07/30/2011 05:47		2	2			53.0	FILL LINES
Test Lines	07/30/2011 05:49		0.1	0.1			1950.0	
Pump Spacer 1	07/30/2011 05:53		4	20			105.0	FRESH WATER
Activity Description	Date/Time	Cht #	Rate bbl/min	Volume bbl		Pressure psig		Comments
				Stage	Total	Tubing	Casing	

## Cementing Job Log

Pump Tail Cement	07/30/2011 06:01		2	81.5			146.0	240 SKS 12.8 PPG 2.11 FT3/SK 11.75 GAL/SK RECIRC DENSOMETER WOULD NOT READ CORRECTLY THROUGH OUT CEMENT, HAD PROBLEMS WITH THE RECIRC BOUNCING AROUND SPARATICALLY AS SOON AS WE PRIMED THE PUMP, DID A HI- CAL, A LO-CAL, AND EVEN REBOOTED COMPUTER SYSTEM
Shutdown	07/30/2011 06:42							WE WERE FINALLY ABLE TO LINE OUT THE DENSOMETER BY TAKING THE CORD FROM THE PM TUBE OFF AND PUTTING IT BACK ON, MADE SURE THAT THE DENSOMETER WAS READING CONSISTENTLY BEFORE TRYING TO MIX CEMENT, WE THEN MXED CEMENT, WEIGHED IT UP AND WAS GOOD
Comment	07/30/2011 06:42							AS SOON AS WE WENT TO CEMENT THE RECIRC DENSOMETER WENT STRAIGHT UP IN DENSITY AND WE WERE NEVER ABLE TO GET IT TO CONTROL ITSELF, DISCUSSED OPTIONS WITH CUSTOMER REP DECIDED TO KEEP PUMPING WITH HES AND CUSTOMER REP USING PRESSURIZED AND BALANCED SCALES
Activity Description	Date/Time	Cht #	Rate bbl/ min	Volume bbl		Pressure psig		Comments
				Stage	Total	Tubing	Casing	

Sold To # : 300721

Ship To # :2867040

Quote # :

Sales Order # : 8335125

SUMMIT Version: 7.2.27

Saturday, July 30, 2011 07:58:00

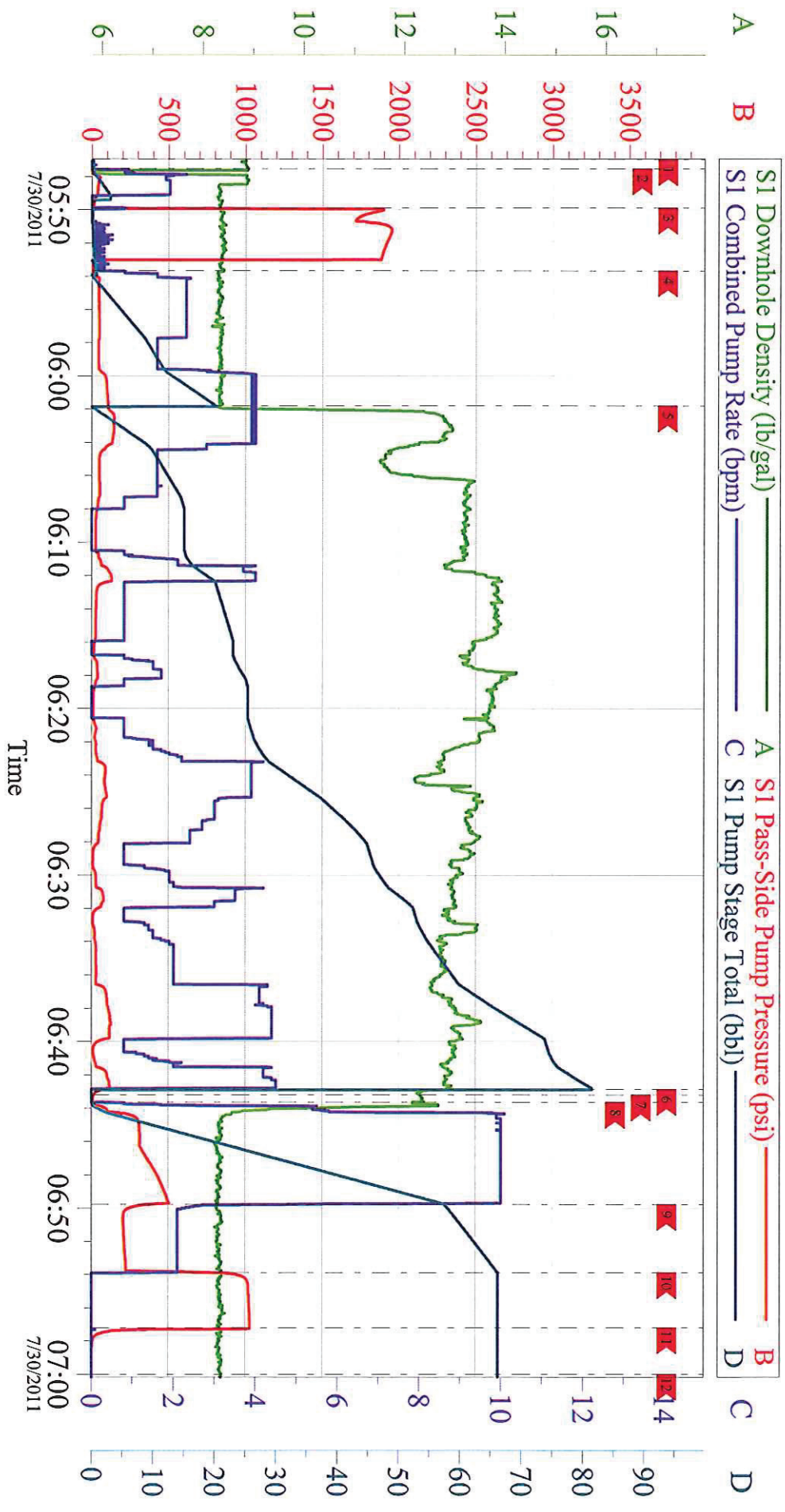
## Cementing Job Log

Comment	07/30/2011 06:42							CONTINUED WEIGHING CONSISTENTLY THROUGH OUT THE REMAINDER OF CEMENT WITH HES AND CUSTOMER REP, TRIED TO KEEP DENSITY AS BEST AS COULD BE DONE WITH CUSTOMER REPS HELP, CALCULATED 90.2 BBL OF MIXED CEMENT, PUMPED 81.5 BBL, RATE WAS BETWEEN 1-4 BPM
Drop Plug	07/30/2011 06:43							PLUG DROP VERIFIED VIA TATTLE TELL BY CUSTOMER REP
Pump Displacement	07/30/2011 06:43		10	67.7			504.0	FRESH WATER
Slow Rate	07/30/2011 06:49		2	57.7			230.0	5 BBL CEMENT TO SURFACE, CALCULATED 8.3 WITH CORRECT AMOUNT OF CEMENT PUMPED DOWN HOLE
Bump Plug	07/30/2011 06:53		2	67.7			250.0	PLUG BUMPED
Check Floats	07/30/2011 06:57						1031. 0	FLOATS HELD, .5 BBL BACK TO THE DISPLACEMENT TANKS
End Job	07/30/2011 07:00							THANK YOU FOR CHOOSING HALLIBURTON, THOMAS PONDER AND CREW



# WILLIAMS

## GM 312-23, 9.625 IN SURFACE



Customer:	Job Date:	Sales Order #:
Well Description:	Job Type:	ADC Used:
Company Rep:	Cement Supervisor:	Elite #/Operator: