



Digital Drilling Data
Systems, LLC

GeoLogPlot

(Scale: 5":.100' (10"))

Company: Cathedral

Well: Frederiksen 1A-28H

Field: DJ Basin

Well ID: 400143158

Job Number: 115281

Location: DJ Basin

Operator 1: Otha McCoy

Operator 2: Aaron Evans

State: Colorado

County: Weld

Country: USA

Elev KB: 4989

Elev DF:

Elev GL: 4976

Comment 1:

Comment 2:

Comment 3:

Comment 4:

Comment 5:

Hole Data

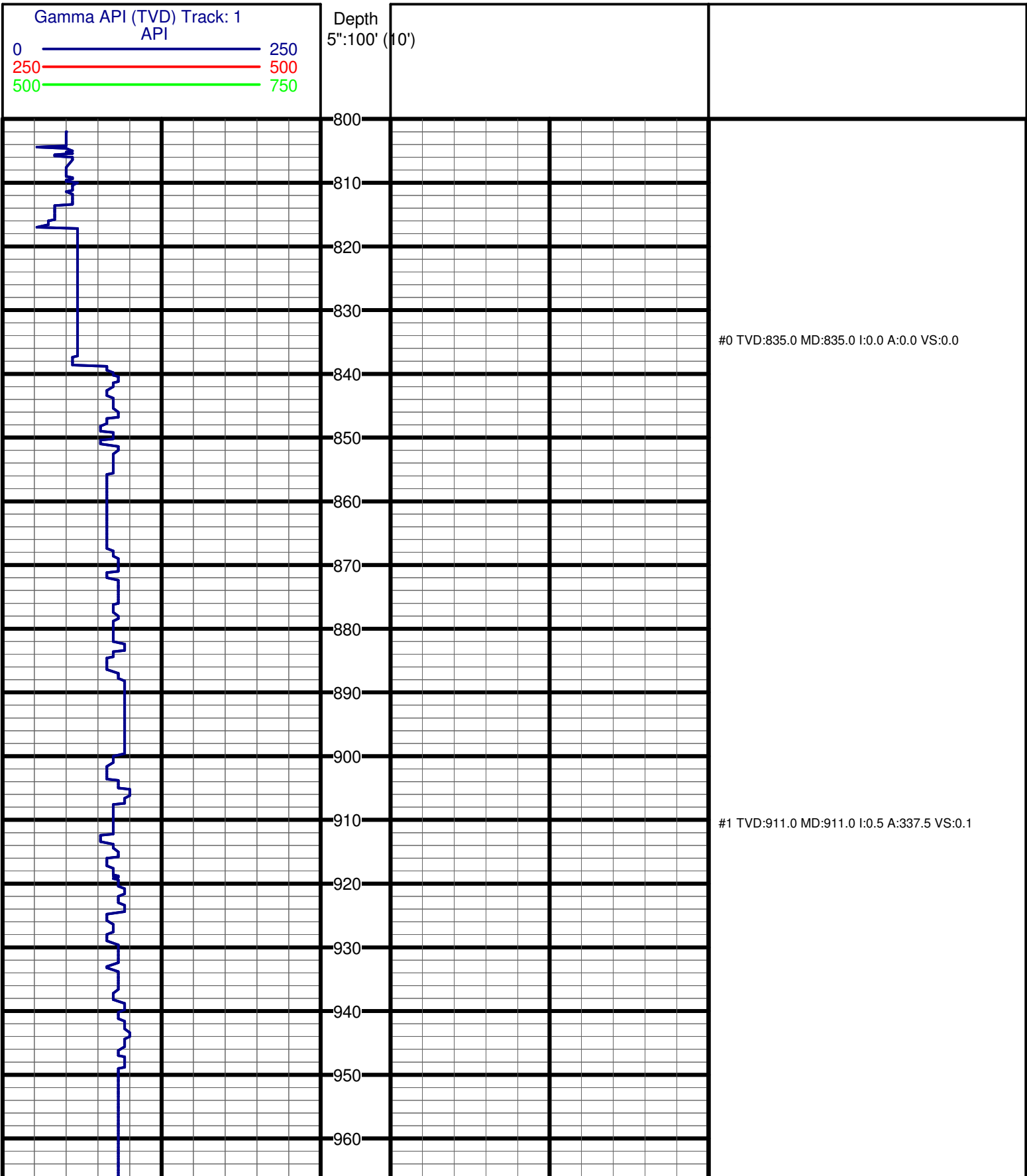
Casing Record

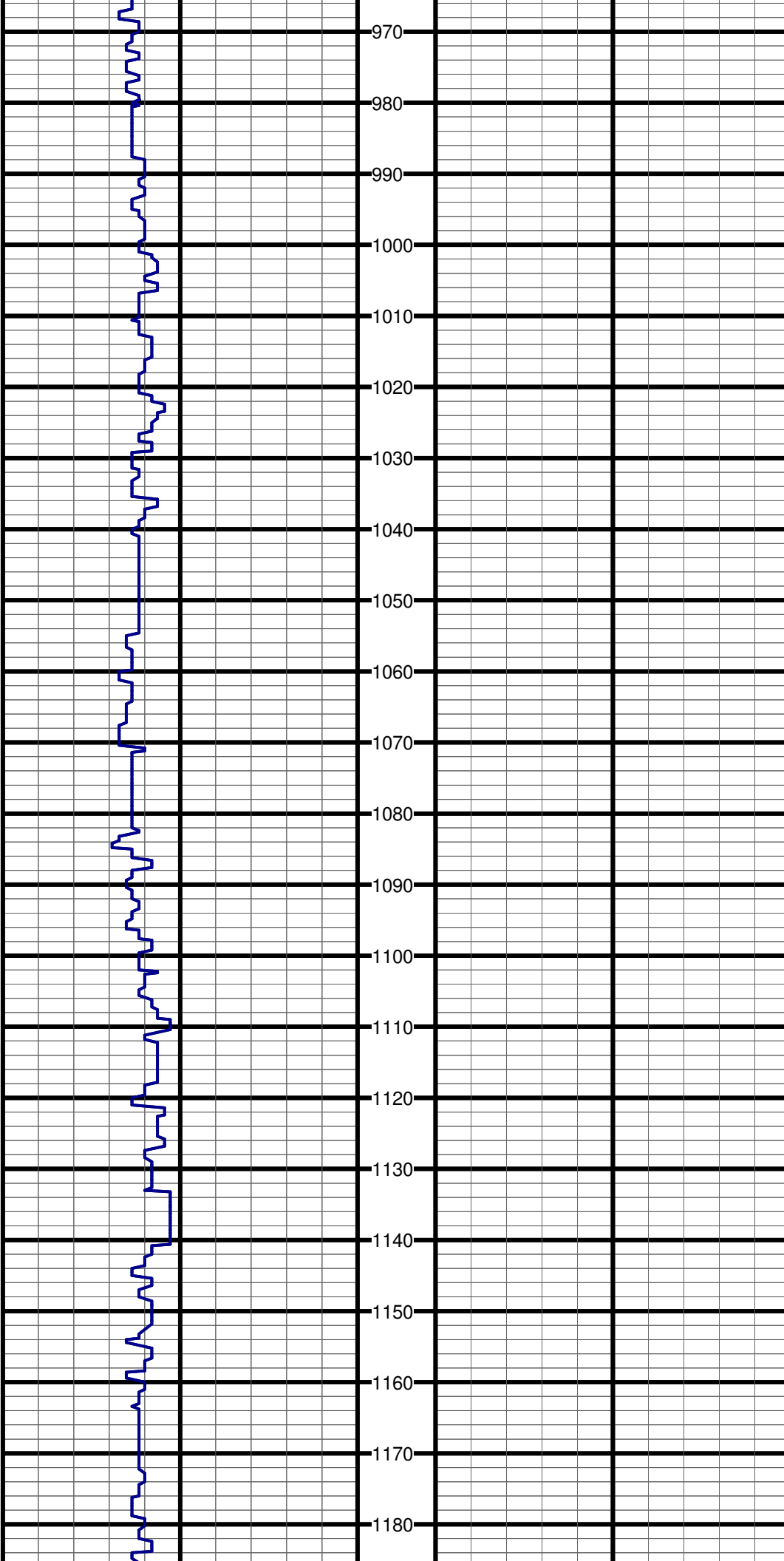
Size	From	To	Size	From	To
12.25	0	835	9 5/8	0	835
8.75	835	7518	7	0	7518
6.125	7518	11663	4.5	7518	11663

Tool Run Data		Run #1	Run #2	Run #3	Run #4	Run #5
Tool S/N		1120	1120	1161	1120	1120
Cal Factor		4.56	4.56	4.56	4.56	4.56
Gamma Offset		33	49	40	40	40
Start Depth		835	4612	4860	4860	6998
Start Date		7/20	7/23	7/26	7/26	7/28
Start Time		18:00	3:00	3:00	14:00	5:30
End Depth		4612	4860	4860	6998	7543
End Date		7/23	7/25	7/26	7/27	7/30
End Time		18:00	18:00	12:00	19:00	6:00

Tool Run Data	Run #6	Run #7	Run #8	Run #9	Run #10
Tool S/N	1120	1120	1165		
Cal Factor	4.56	4.56	4.56		
Offset	72	43	44		
Start Depth	7543	9222	11254		
Start Date	8/2	8/4	8/7		
Start Time	5:30	2:20	16:00		
End Depth	9222	11254	11663		
End Date	8/4	8/7	8/8		
End Time	12:30	4:00	14:00		
Tool Run Data	Run #11	Run #12	Run #13	Run #14	Run #15
Tool S/N					
Cal Factor					
Offset					
Start Depth					
Start Date					
Start Time					
End Depth					

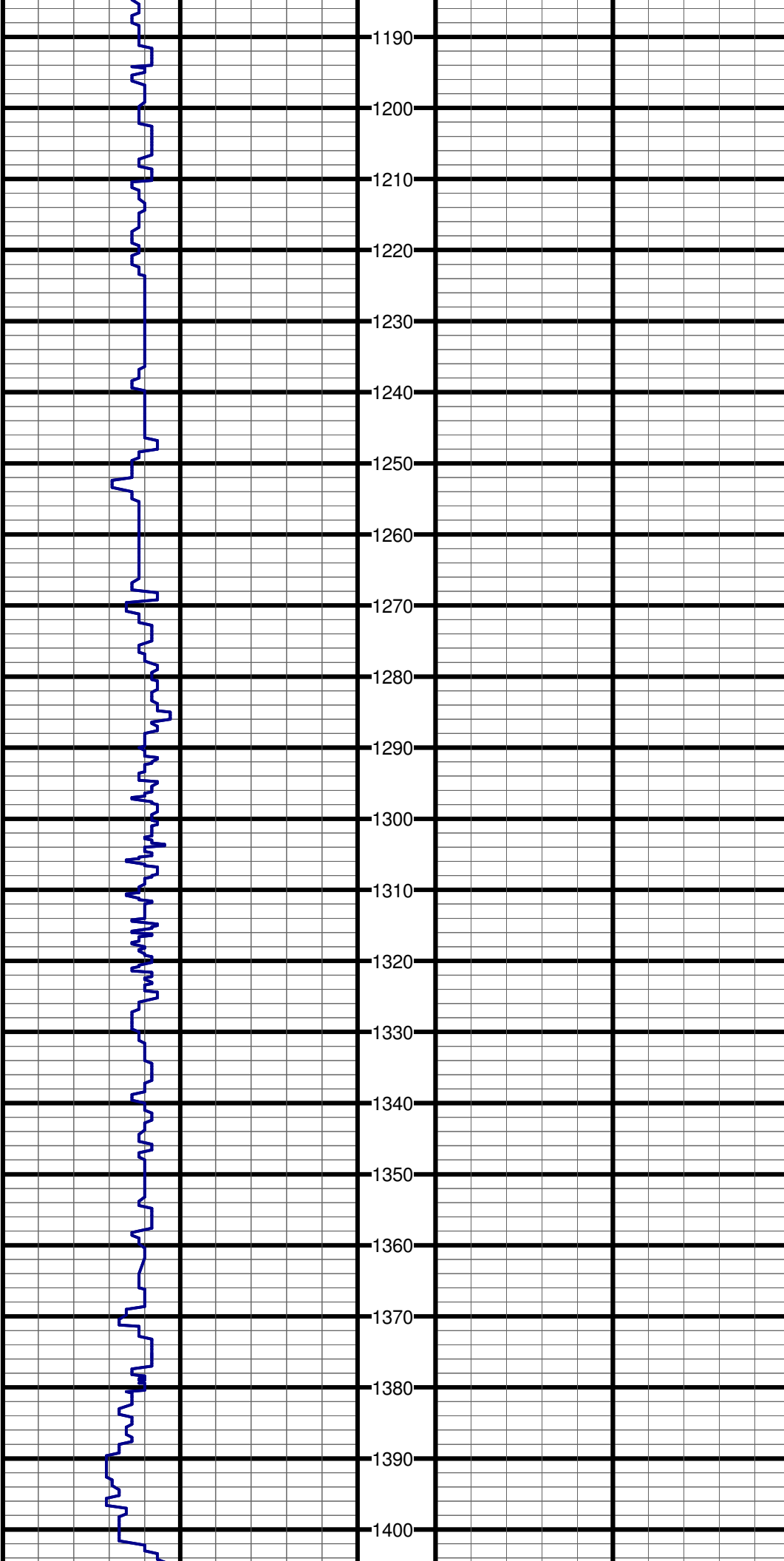
End Date					
End Time					





#2 TVD:1003.0 MD:1003.0 I:1.1 A:125.0 VS:-0.4

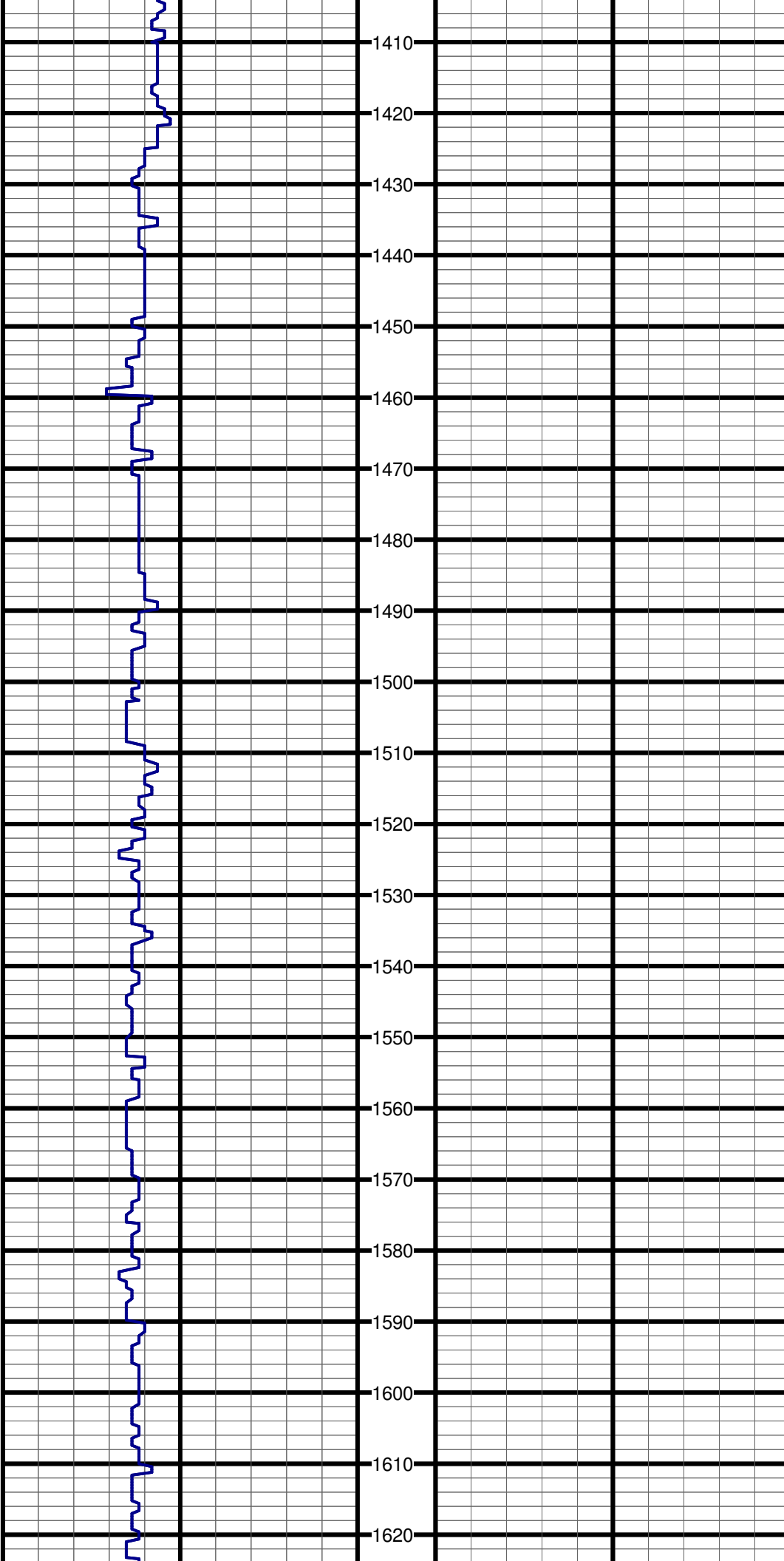
#3 TVD:1095.0 MD:1095.0 I:1.1 A:321.9 VS:-0.6



#4 TVD:1187.0 MD:1187.0 I:1.2 A:17.0 VS:-0.3

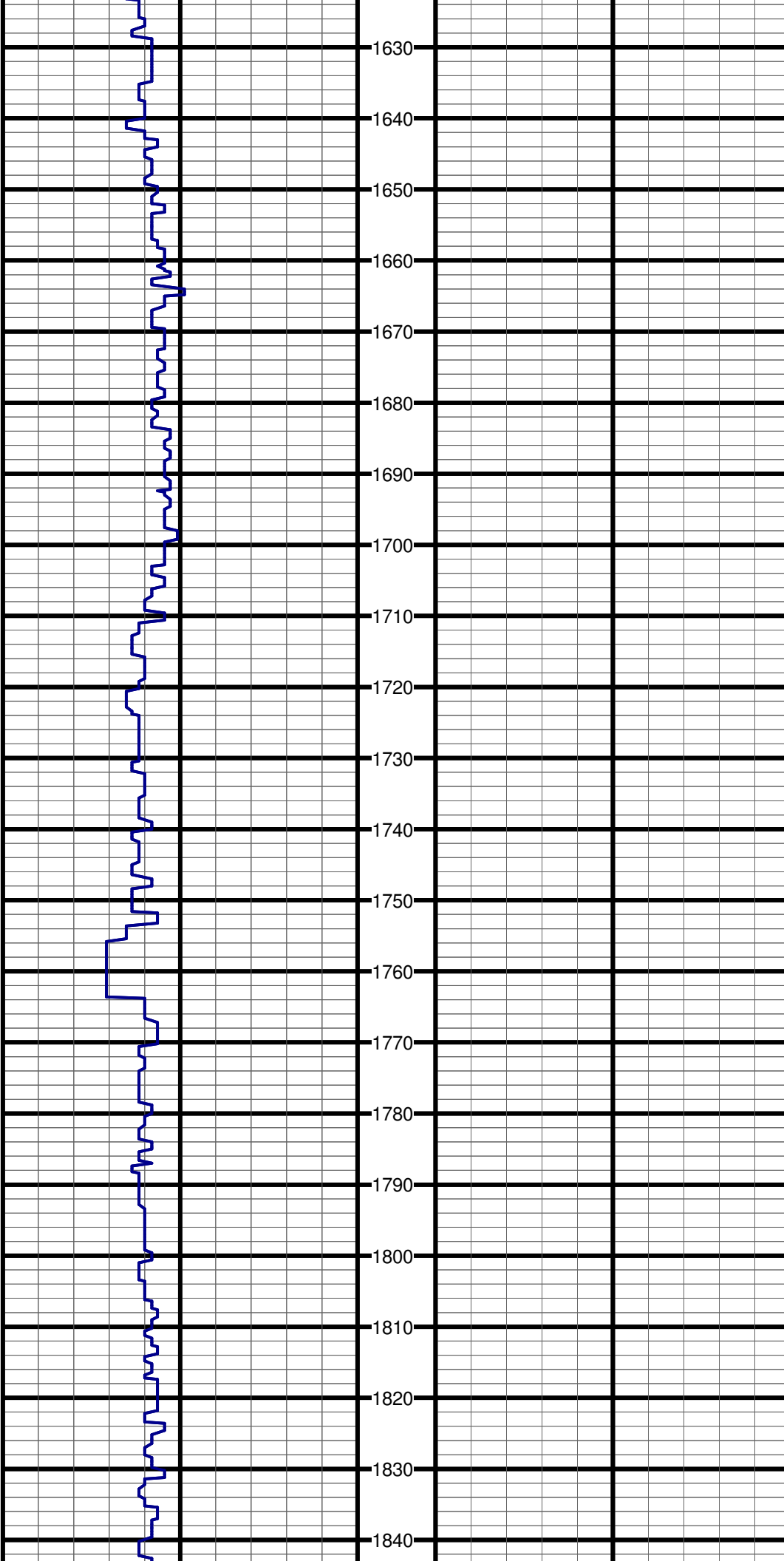
#5 TVD:1279.0 MD:1279.0 I:1.3 A:122.8 VS:-1.4

#6 TVD:1370.9 MD:1371.0 I:2.2 A:252.4 VS:-0.7



#7 TVD:1462.9 MD:1463.0 I:0.3 A:243.0 VS:1.2

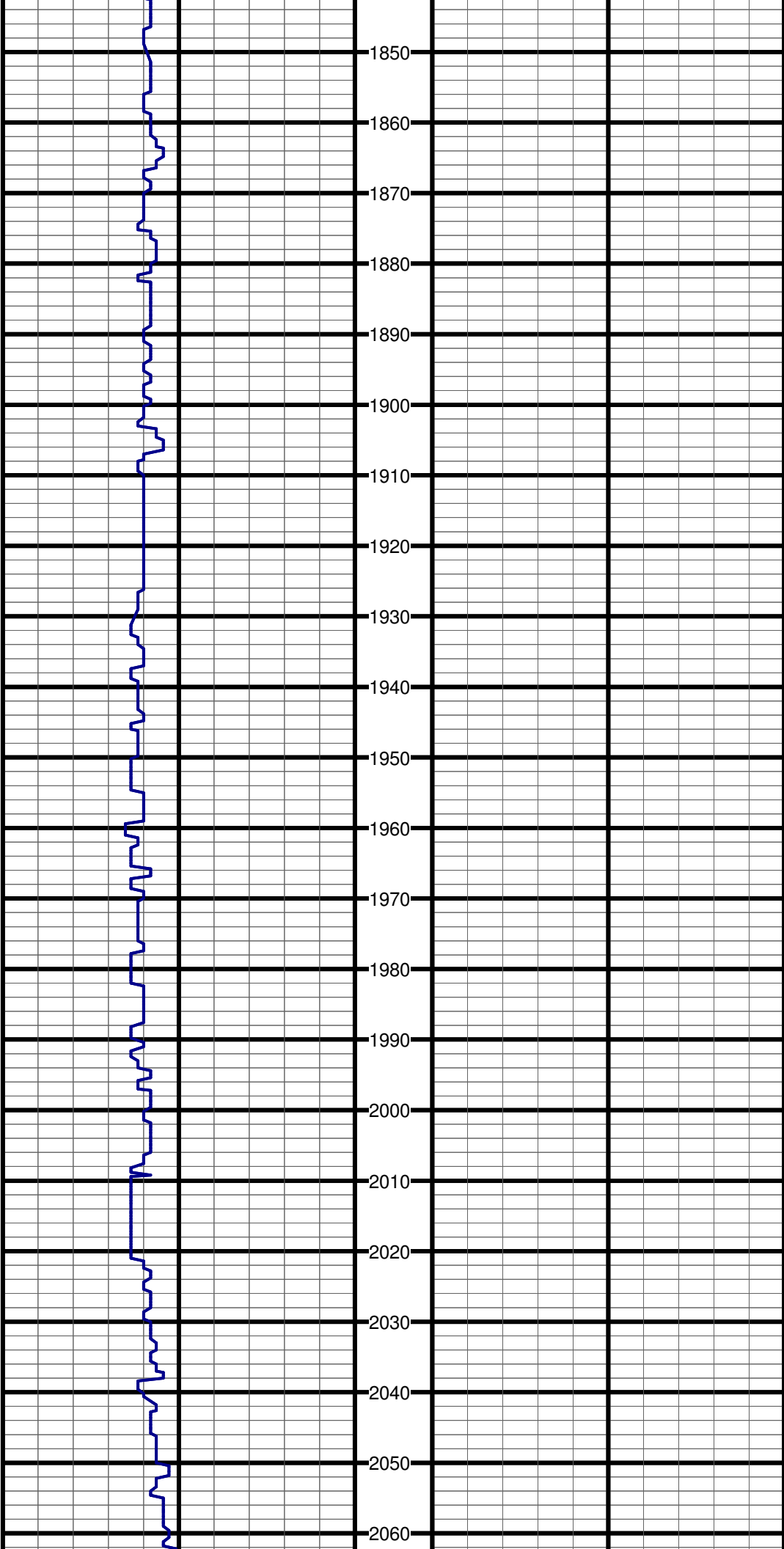
#8 TVD:1557.9 MD:1558.0 I:0.7 A:230.4 VS:1.9



#9 TVD:1653.9 MD:1654.0 I:1.3 A:207.3 VS:2.8

#10 TVD:1748.9 MD:1749.0 I:1.4 A:289.5 VS:4.3

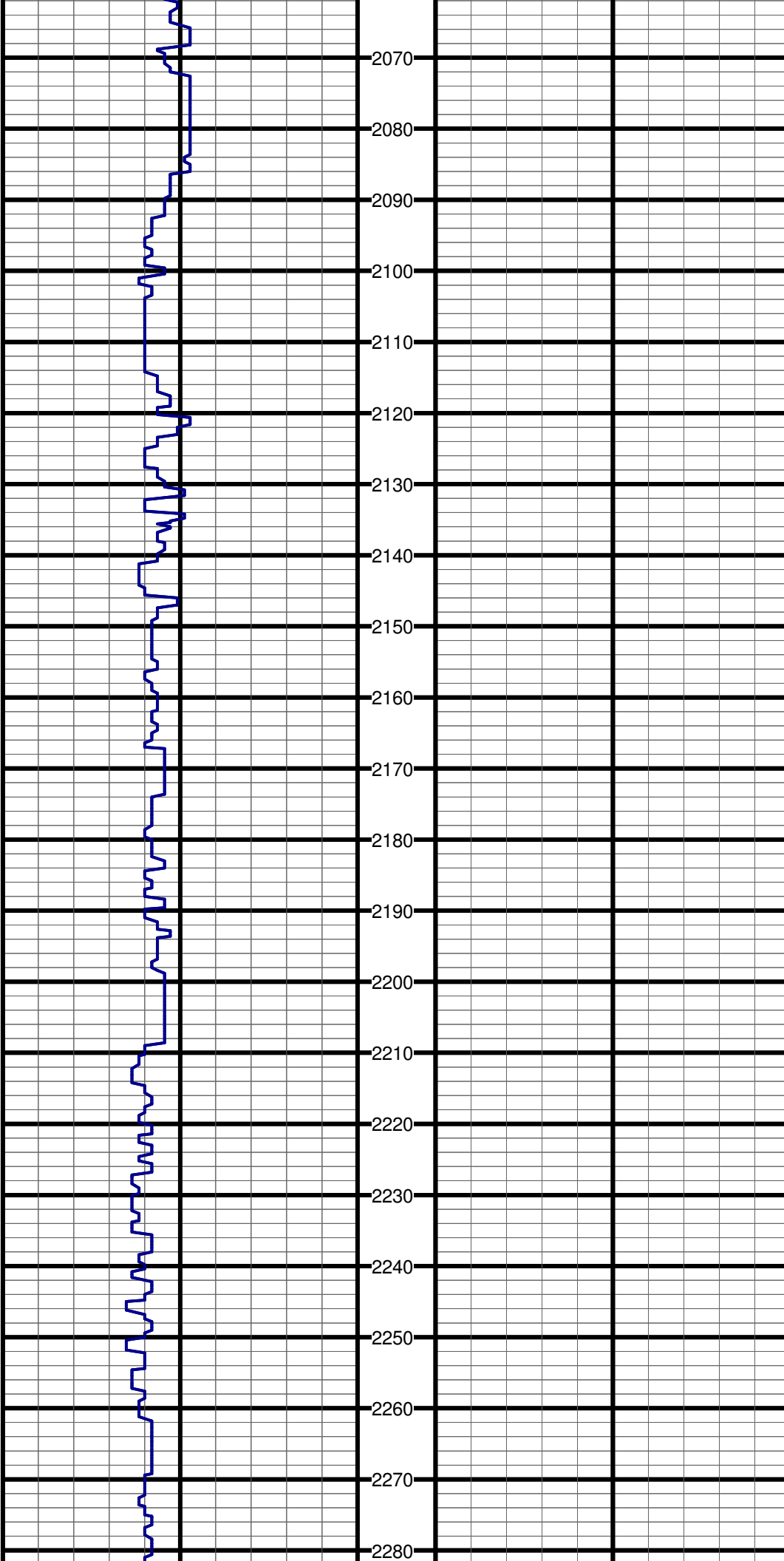
#11 TVD:1810.0 MD:1810.0 I:1.5 A:310.4 VS:5.0



#11 TVD:1843.9 MD:1844.0 I:0.7 A:349.4 VS:5.6

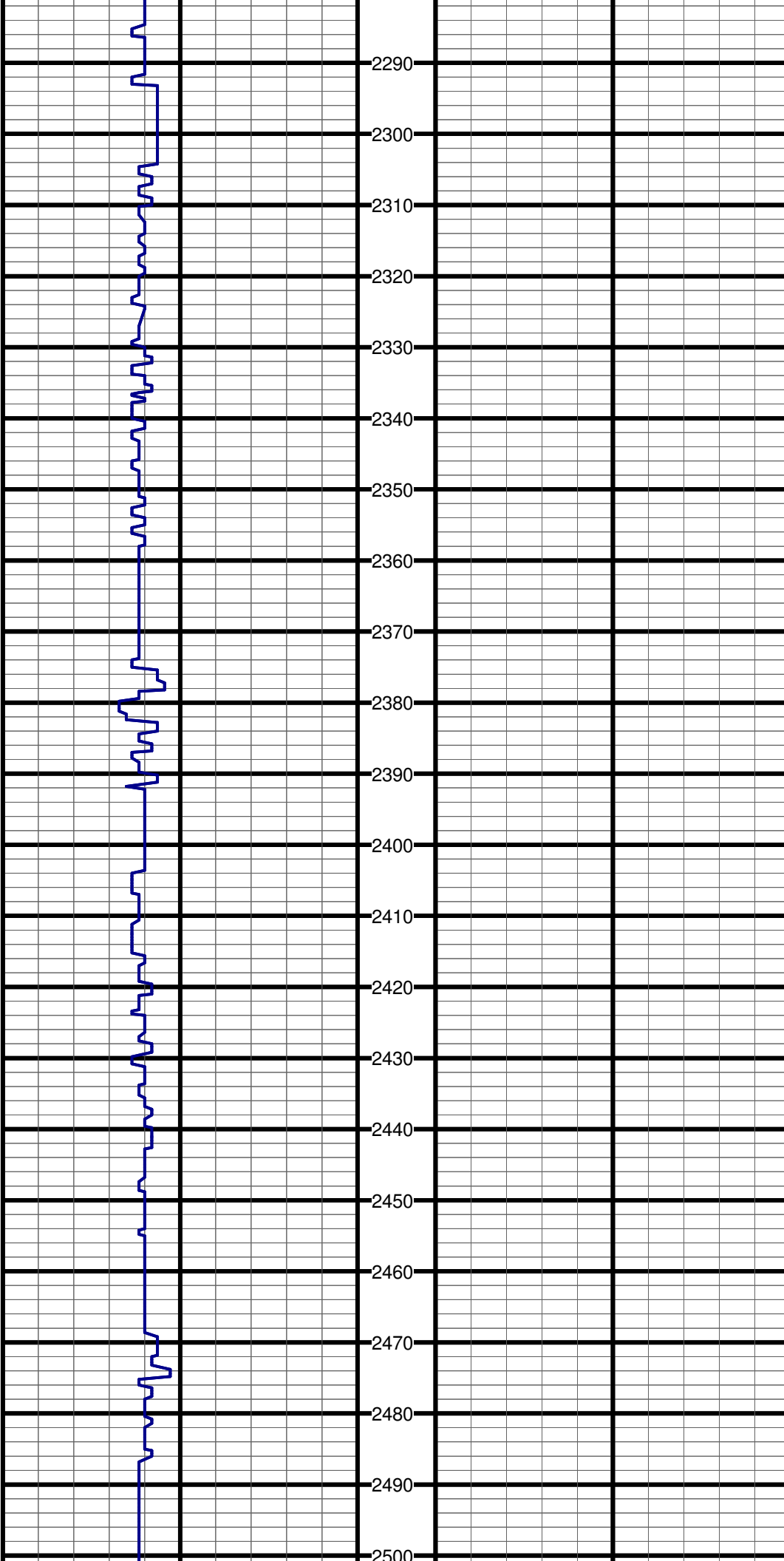
#12 TVD:1938.9 MD:1939.0 I:0.3 A:106.7 VS:5.4

#13 TVD:2034.9 MD:2035.0 I:0.6 A:180.5 VS:5.2



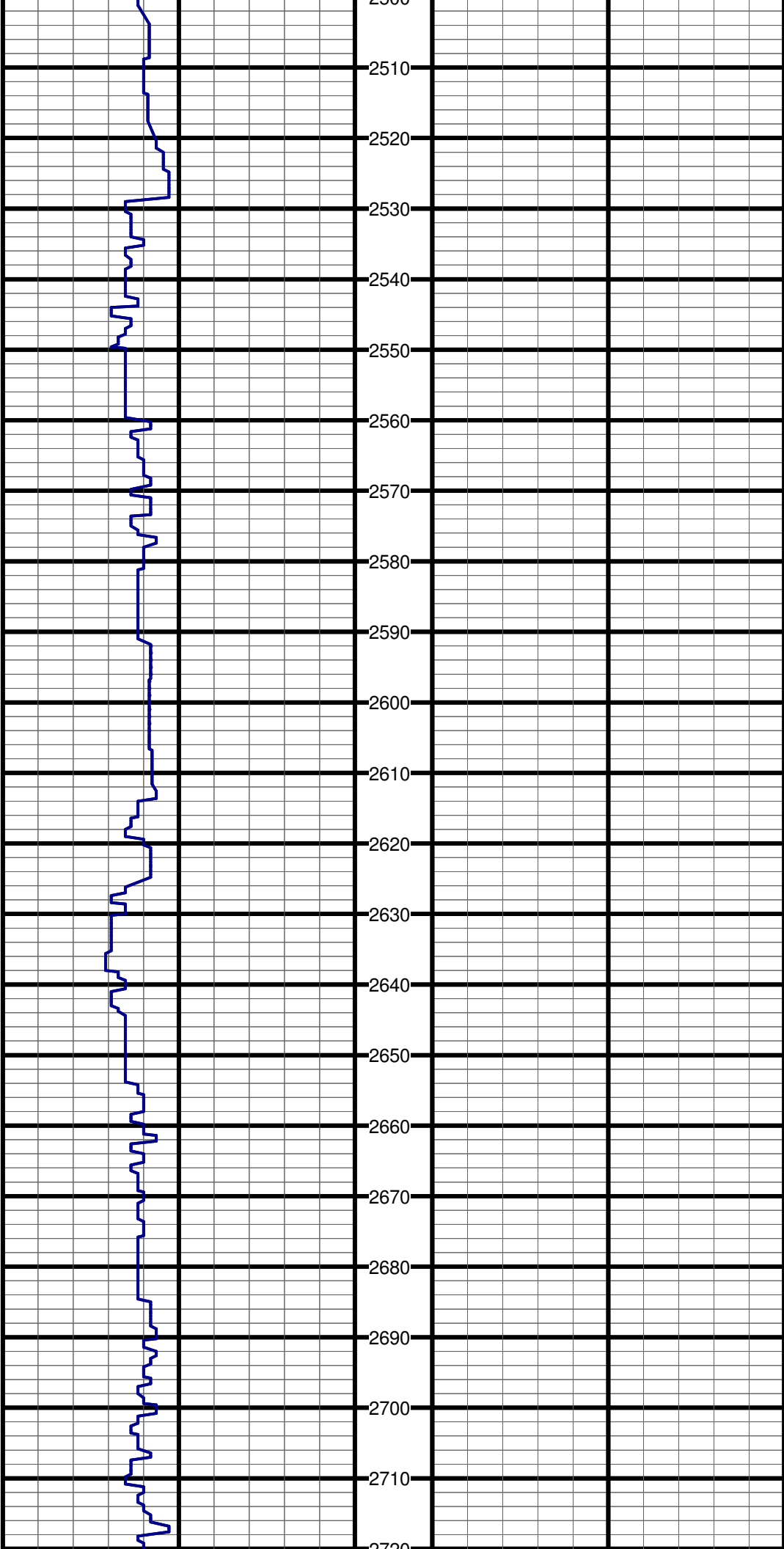
#14 TVD:2129.8 MD:2130.0 I:1.0 A:229.2 VS:5.8

#15 TVD:2224.8 MD:2225.0 I:0.4 A:53.0 VS:6.1



#16 TVD:2319.8 MD:2320.0 I:1.2 A:154.9 VS:5.4

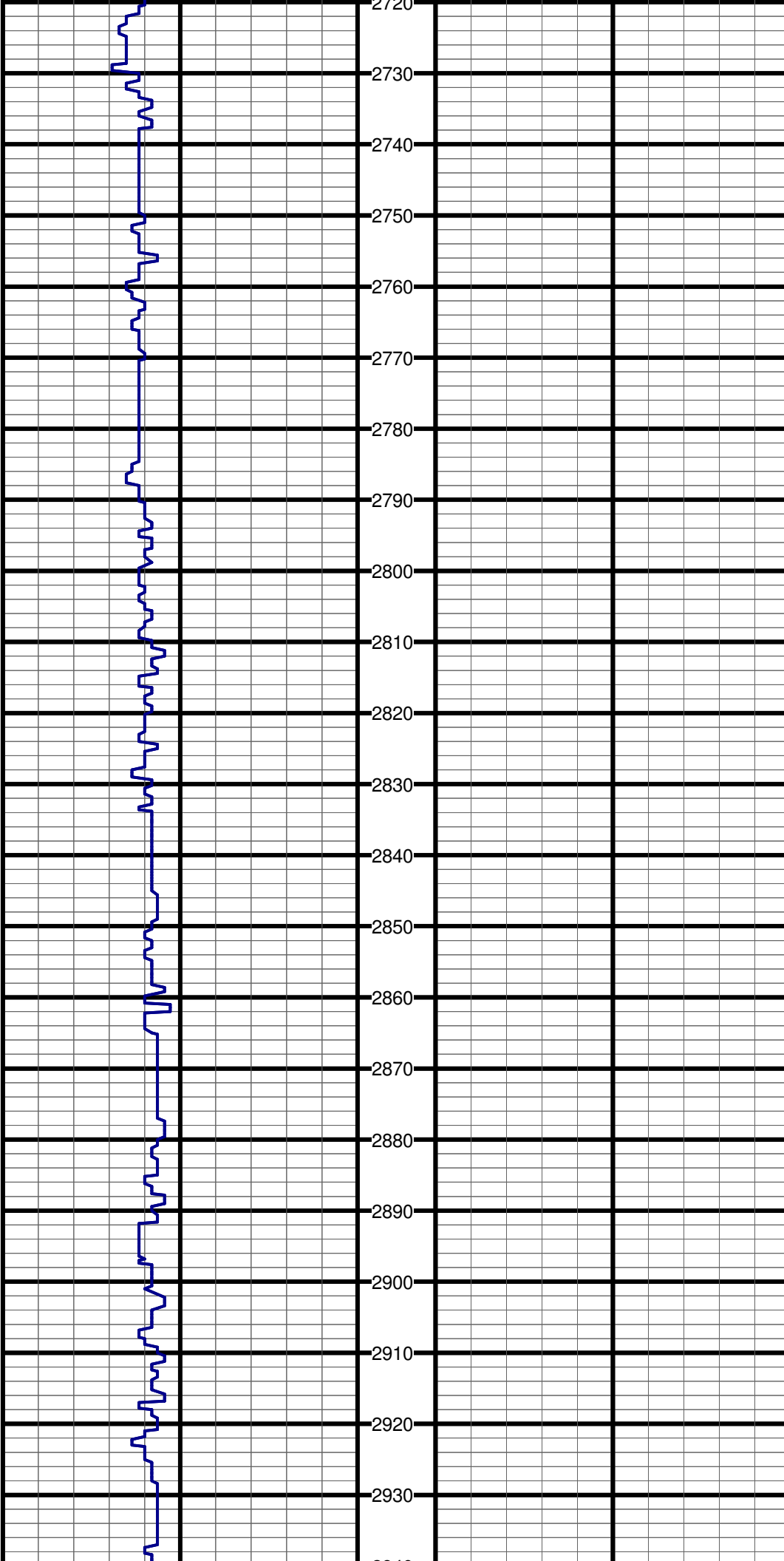
#17 TVD:2414.8 MD:2415.0 I:0.8 A:75.9 VS:4.3



#18 TVD:2509.8 MD:2510.0 I:0.8 A:18.7 VS:3.5

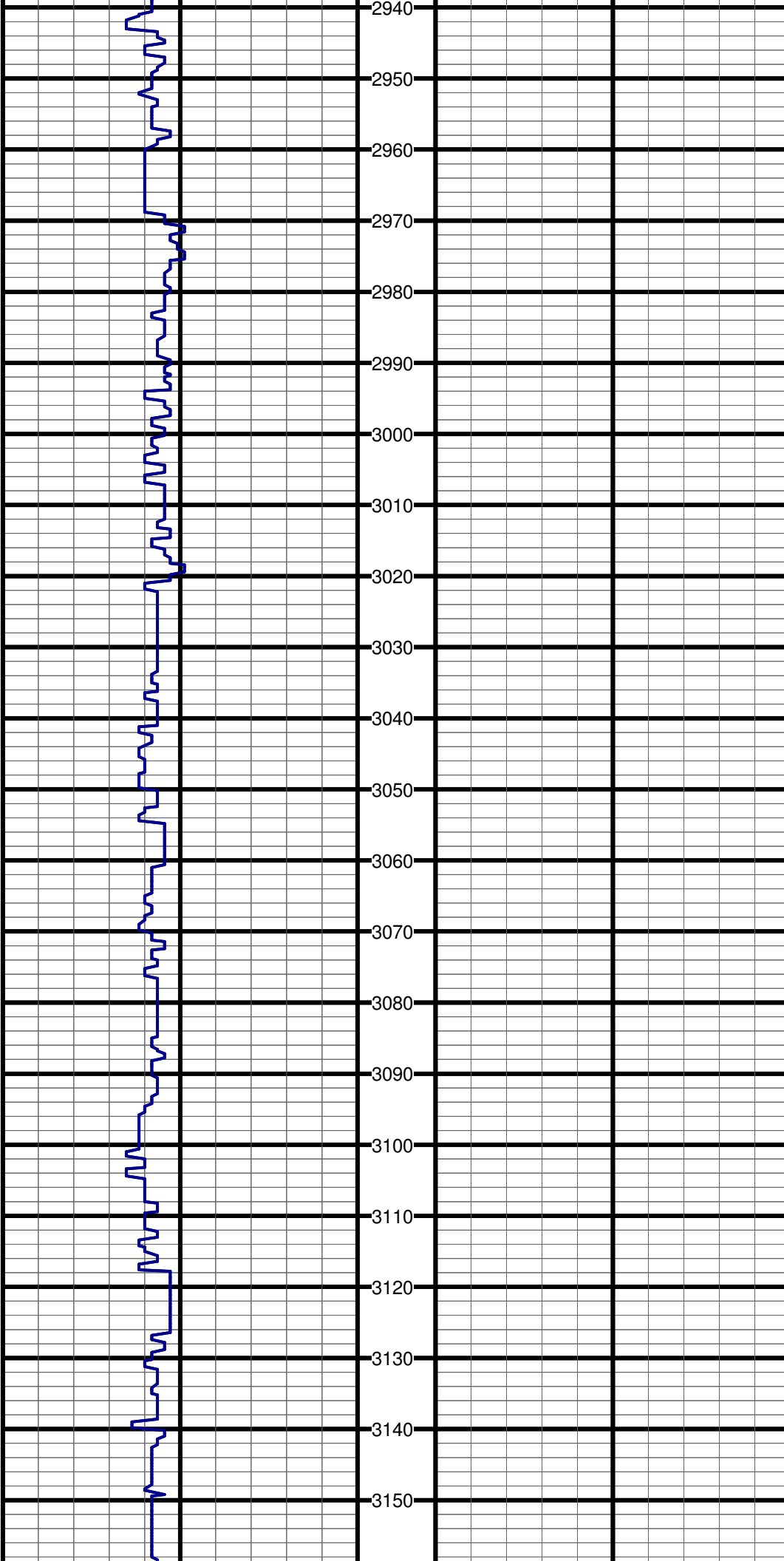
#19 TVD:2604.8 MD:2605.0 I:1.4 A:257.3 VS:4.4

#20 TVD:2699.8 MD:2700.0 I:1.5 A:322.6 VS:6.3



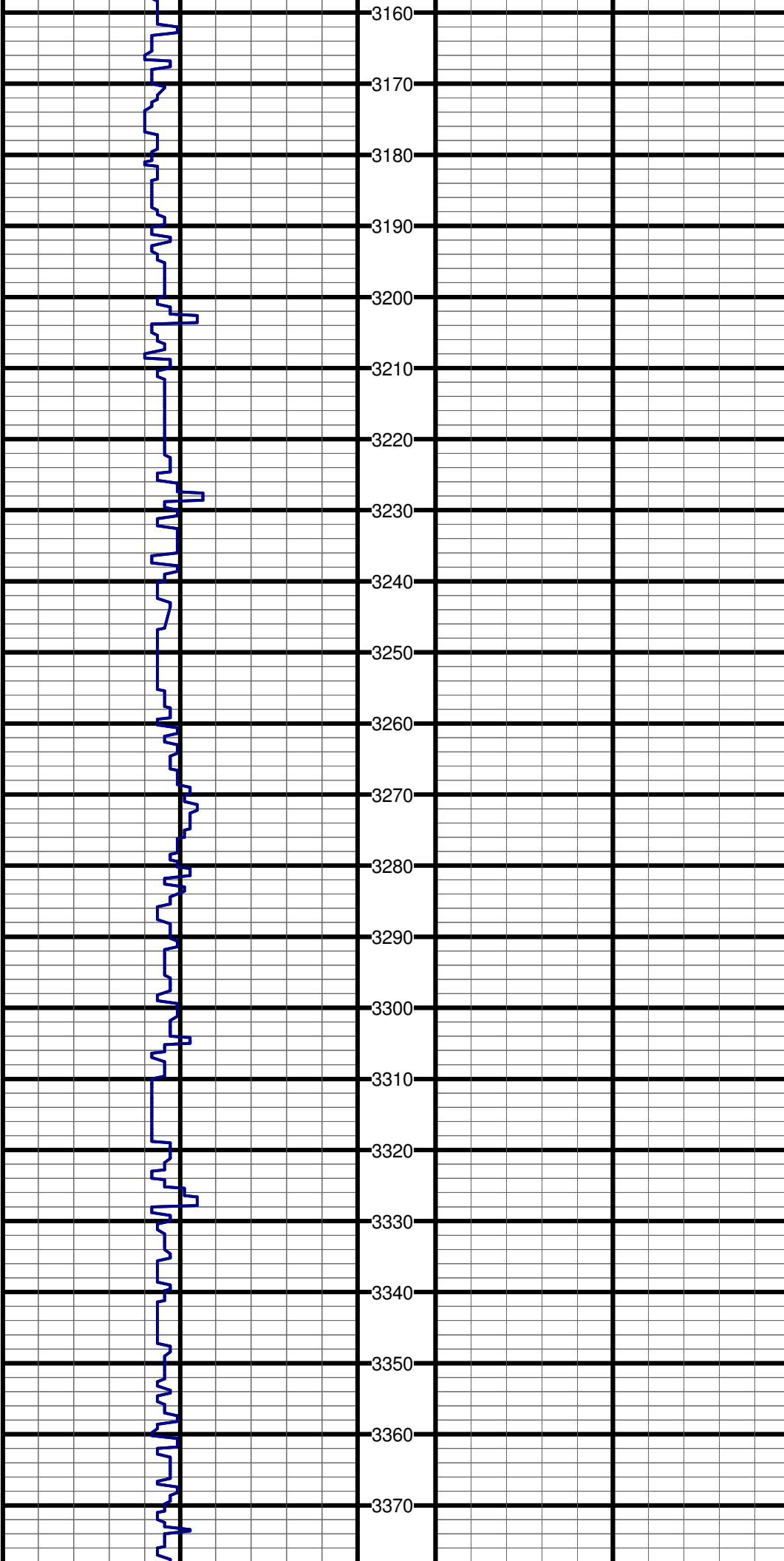
#21 TVD:2794.8 MD:2795.0 I:0.9 A:86.2 VS:6.4

#22 TVD:2889.7 MD:2890.0 I:2.4 A:227.5 VS:7.1



#23 TVD:2985.7 MD:2986.0 I:1.2 A:320.2 VS:9.2

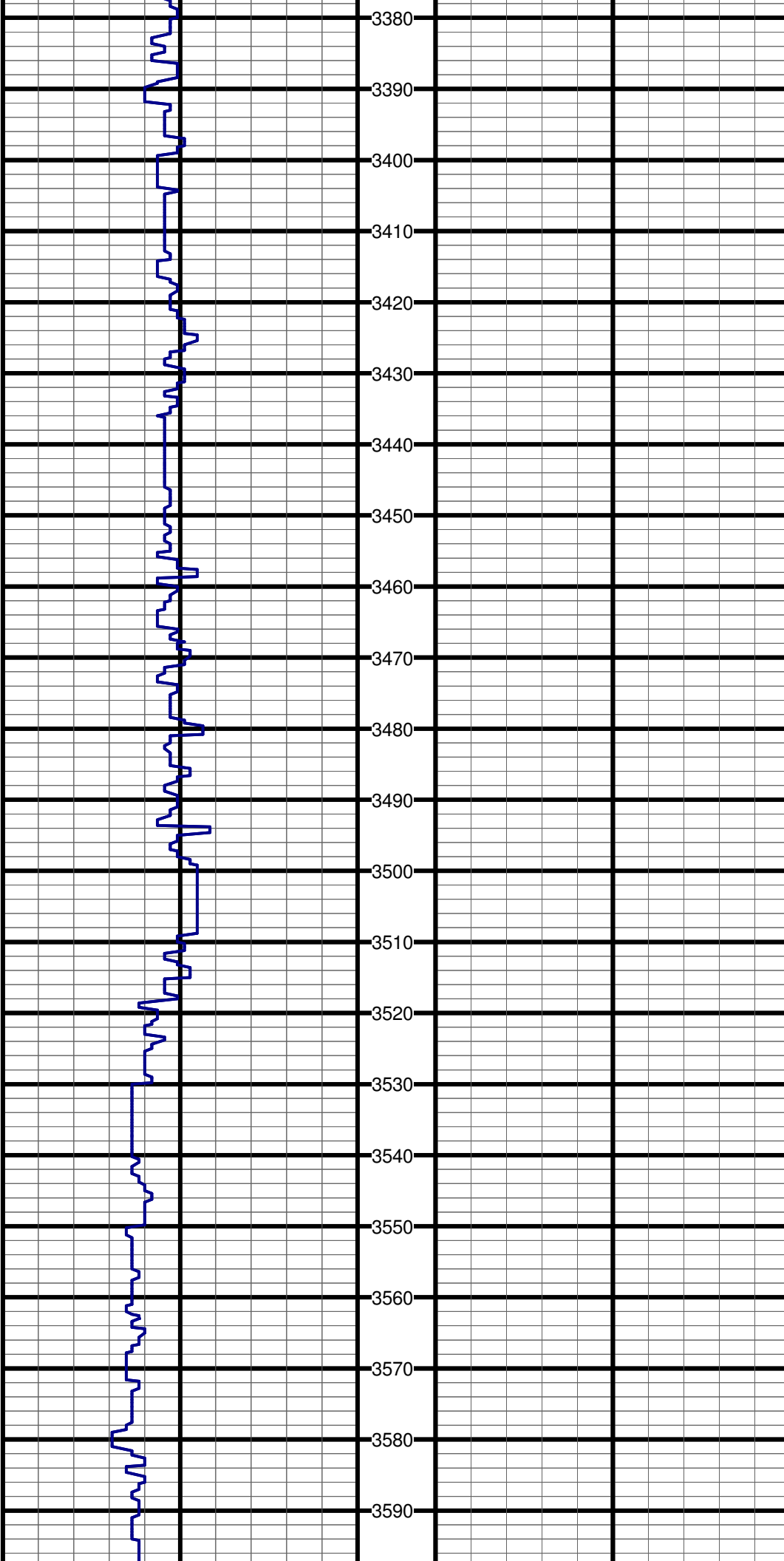
#24 TVD:3080.7 MD:3081.0 I:1.5 A:68.1 VS:8.7



#25 TVD:3175.7 MD:3176.0 I:2.3 A:256.4 VS:9.4

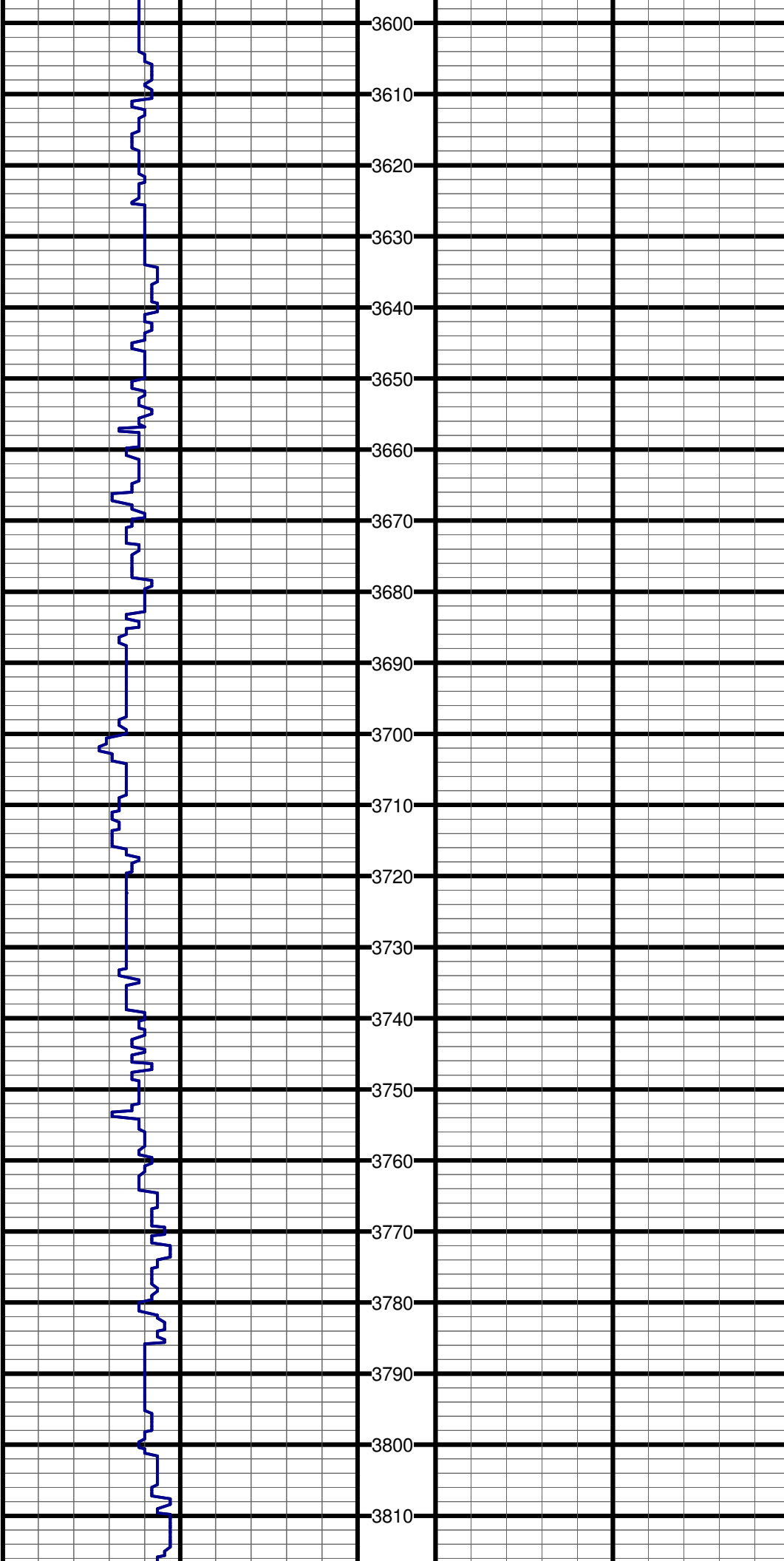
#26 TVD:3270.6 MD:3271.0 I:2.1 A:330.4 VS:12.2

#27 TVD:3366.6 MD:3367.0 I:1.3 A:168.0 VS:12.8



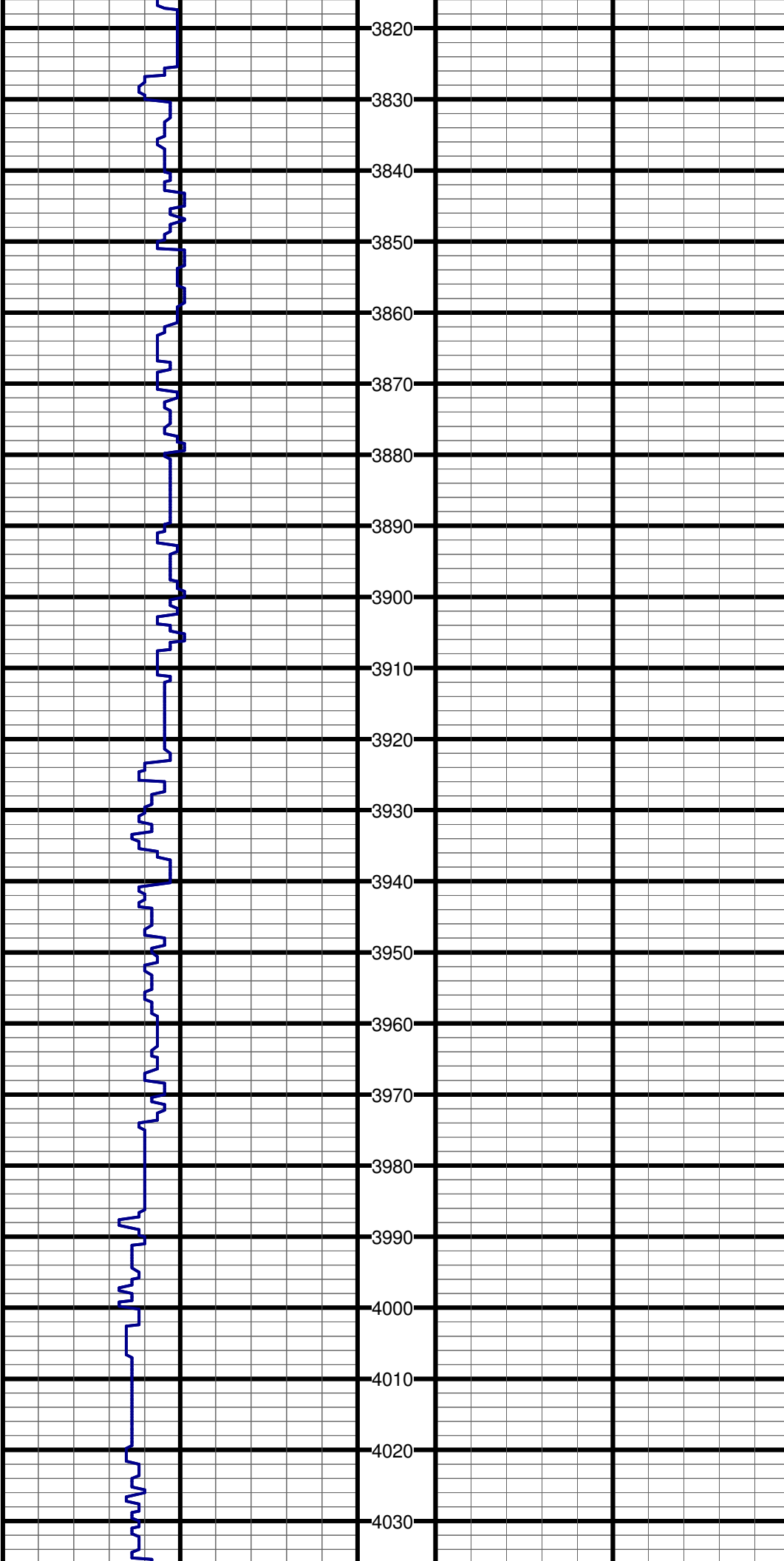
#28 TVD:3461.6 MD:3462.0 I:1.7 A:296.5 VS:13.8

#29 TVD:3556.6 MD:3557.0 I:1.1 A:139.9 VS:14.5



#30 TVD:3651.6 MD:3652.0 I:1.0 A:286.3 VS:14.7

#31 TVD:3746.6 MD:3747.0 I:0.6 A:112.8 VS:15.0



3820

3830

3840

3850

3860

3870

3880

3890

3900

3910

3920

3930

3940

3950

3960

3970

3980

3990

4000

4010

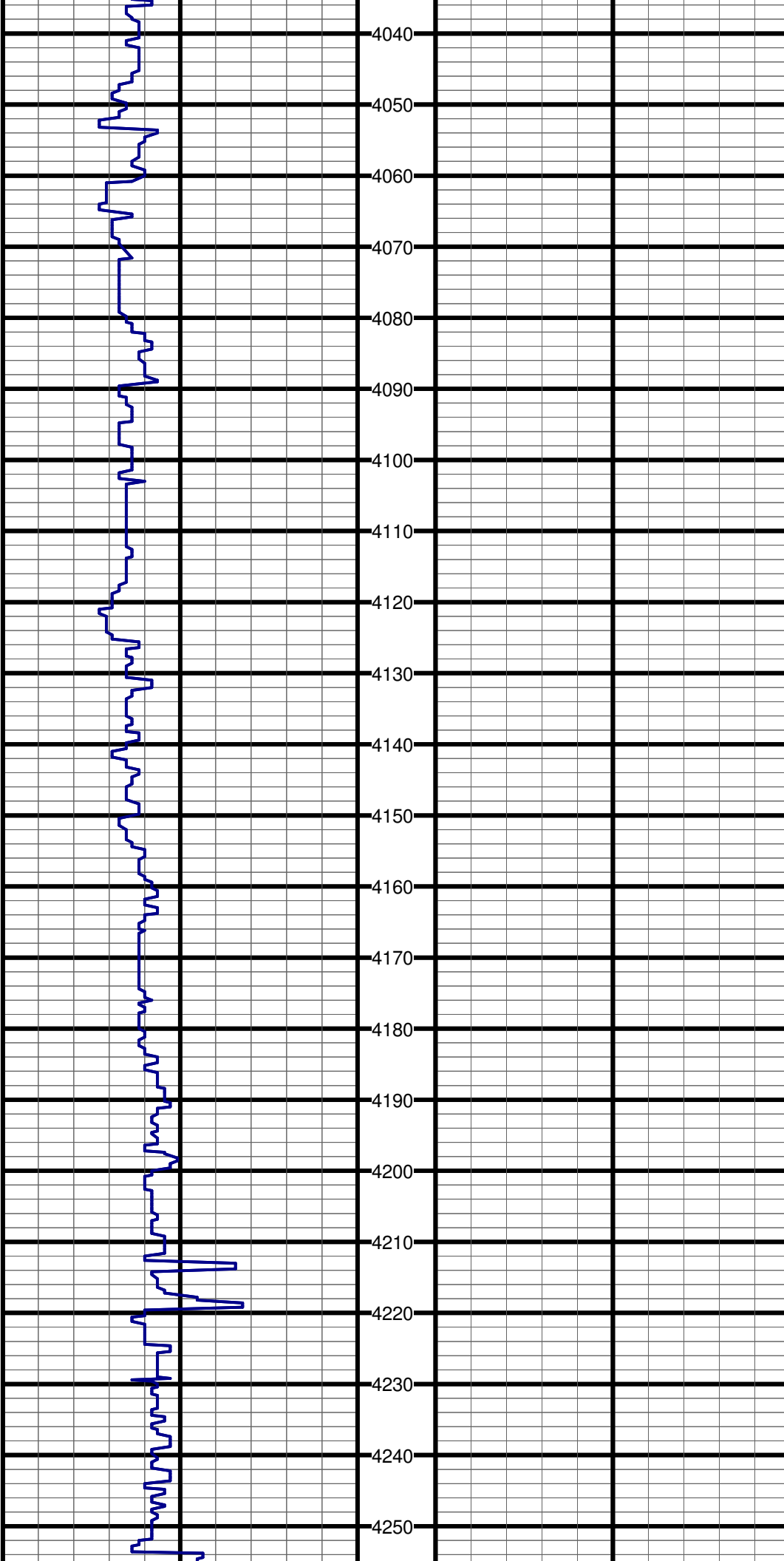
4020

4030

#32 TVD:3841.6 MD:3842.0 I:1.2 A:239.7 VS:15.4

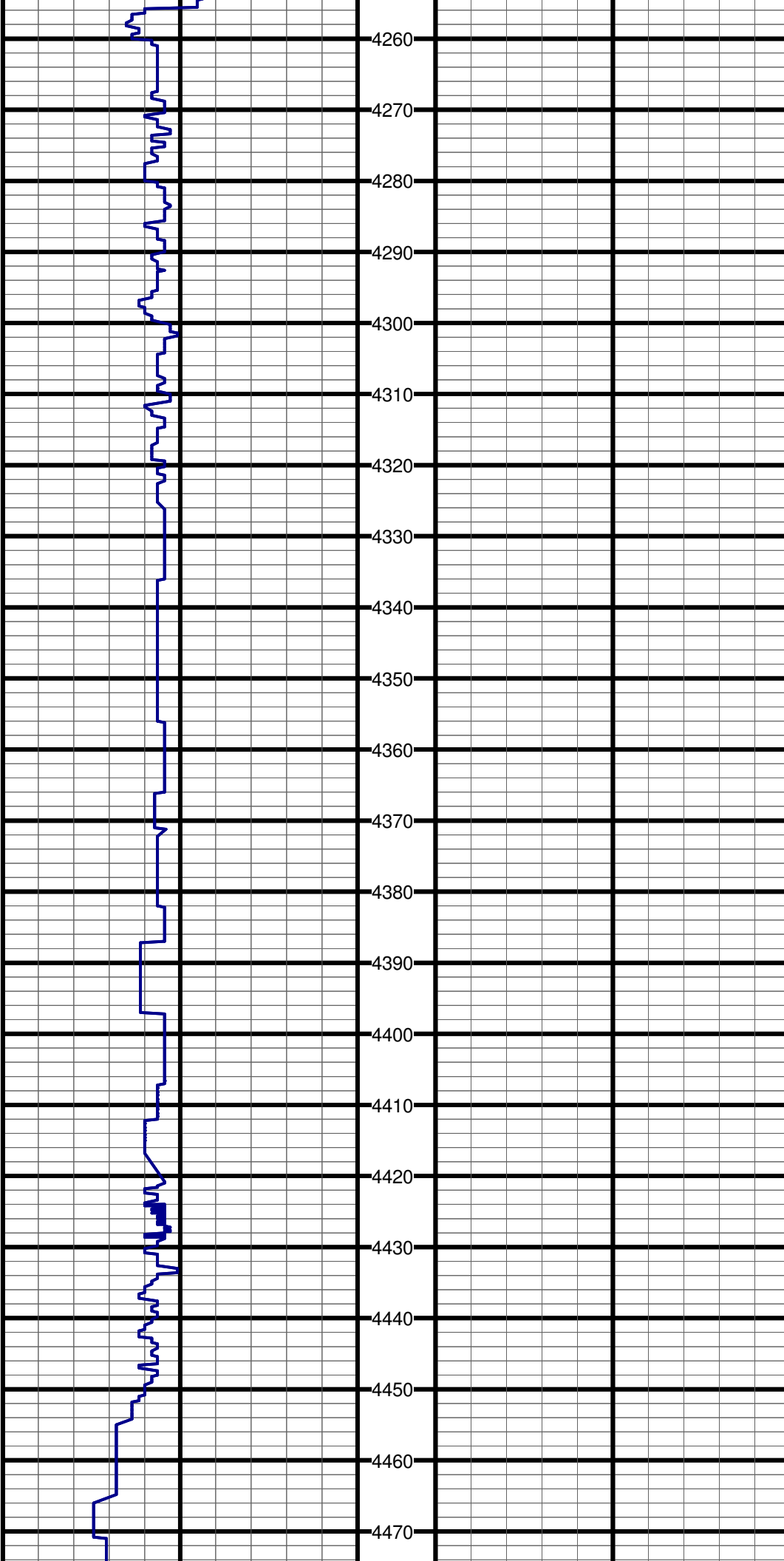
#33 TVD:3937.6 MD:3938.0 I:0.4 A:137.6 VS:16.0

#34 TVD:4032.5 MD:4033.0 I:1.7 A:344.8 VS:16.2



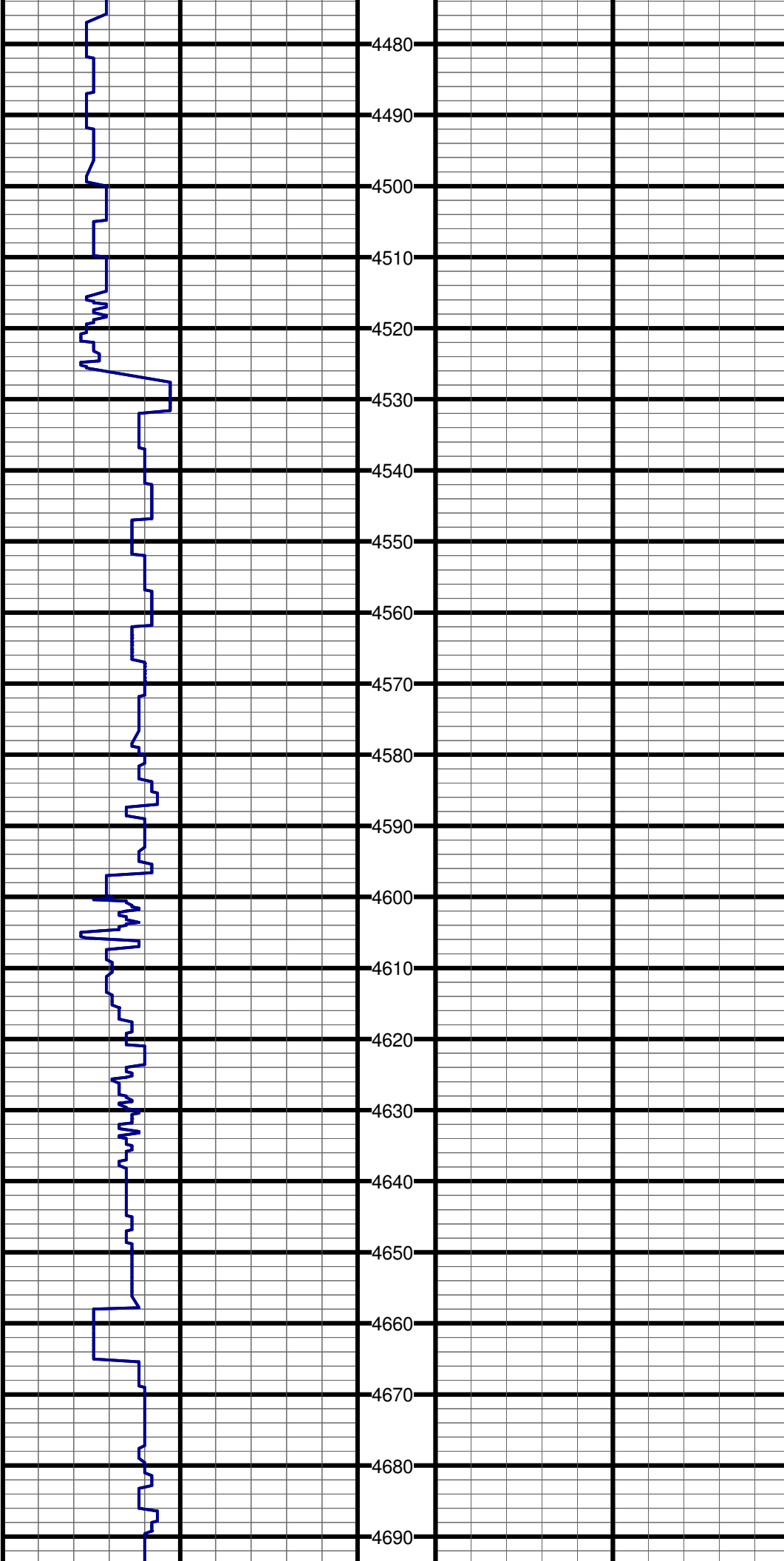
#35 TVD:4127.5 MD:4128.0 I:2.2 A:330.8 VS:17.6

#36 TVD:4222.4 MD:4223.0 I:2.6 A:320.2 VS:20.0



#37 TVD:4318.3 MD:4319.0 I:2.7 A:310.2 VS:23.2

#38 TVD:4413.2 MD:4414.0 I:2.8 A:301.3 VS:27.0

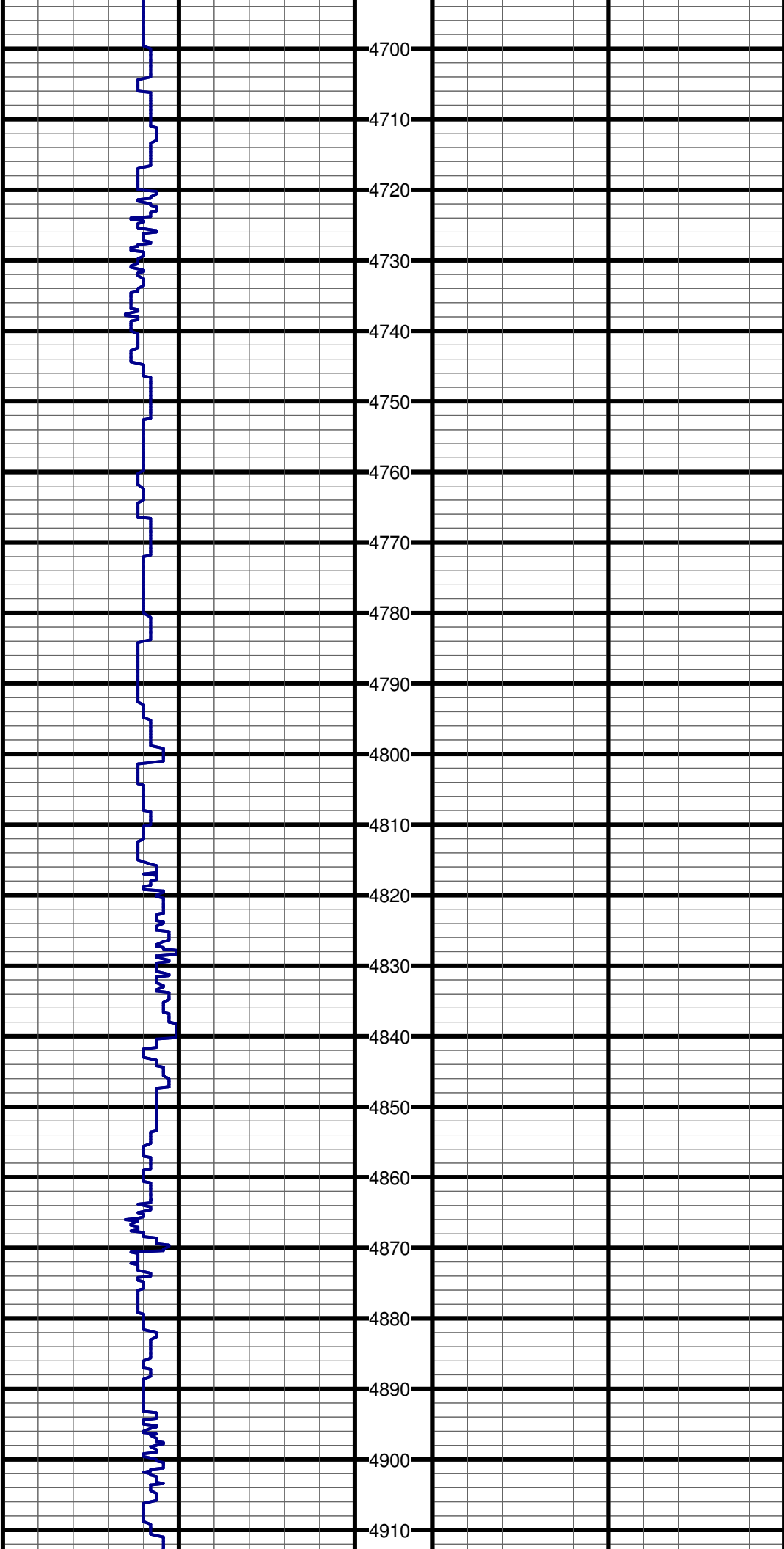


#39 TVD:4508.1 MD:4509.0 I:2.9 A:294.8 VS:31.3

#40 TVD:4571.0 MD:4572.0 I:3.1 A:292.2 VS:34.3

#41 TVD:4589.0 MD:4590.0 I:3.0 A:294.5 VS:35.2

#42 TVD:4683.8 MD:4685.0 I:2.9 A:291.2 VS:39.8

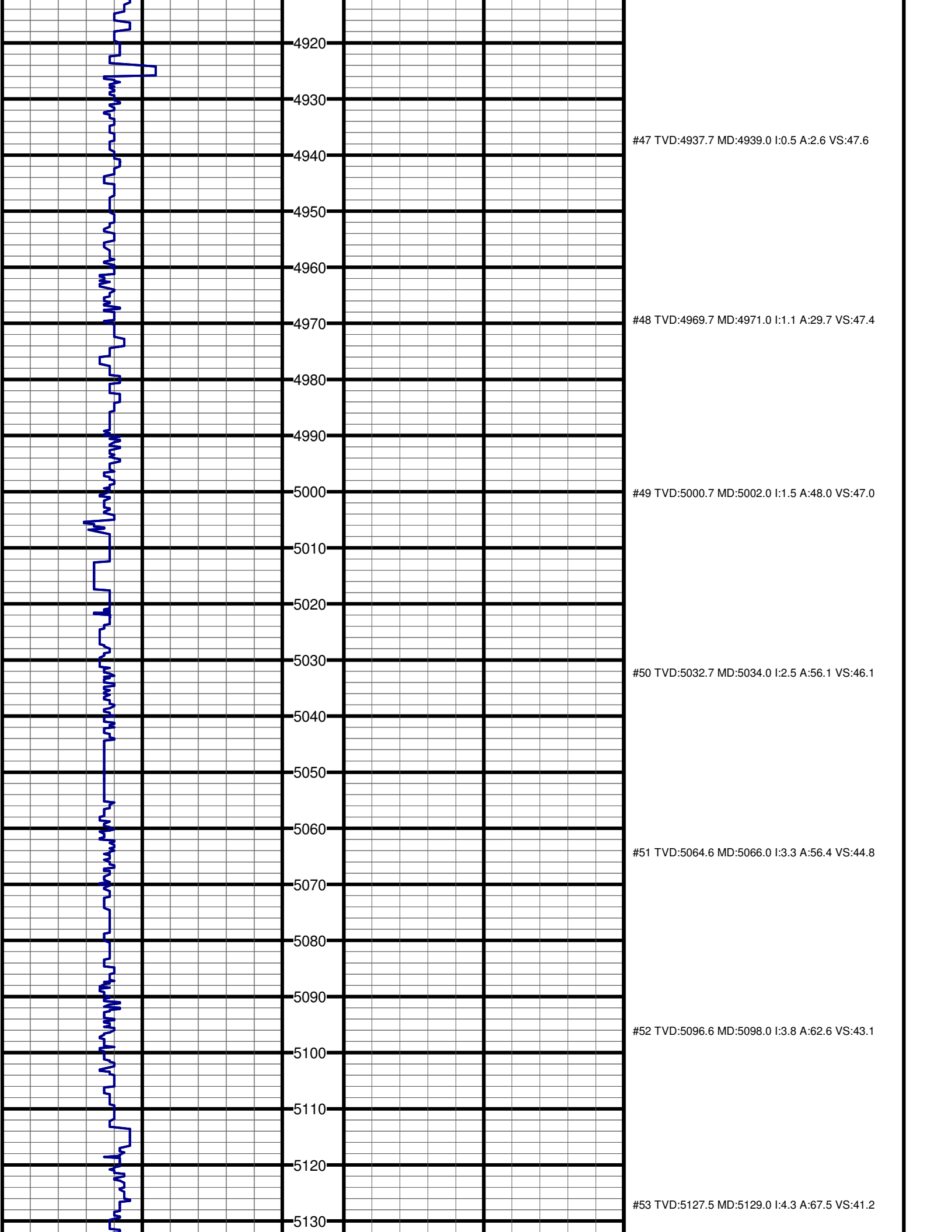


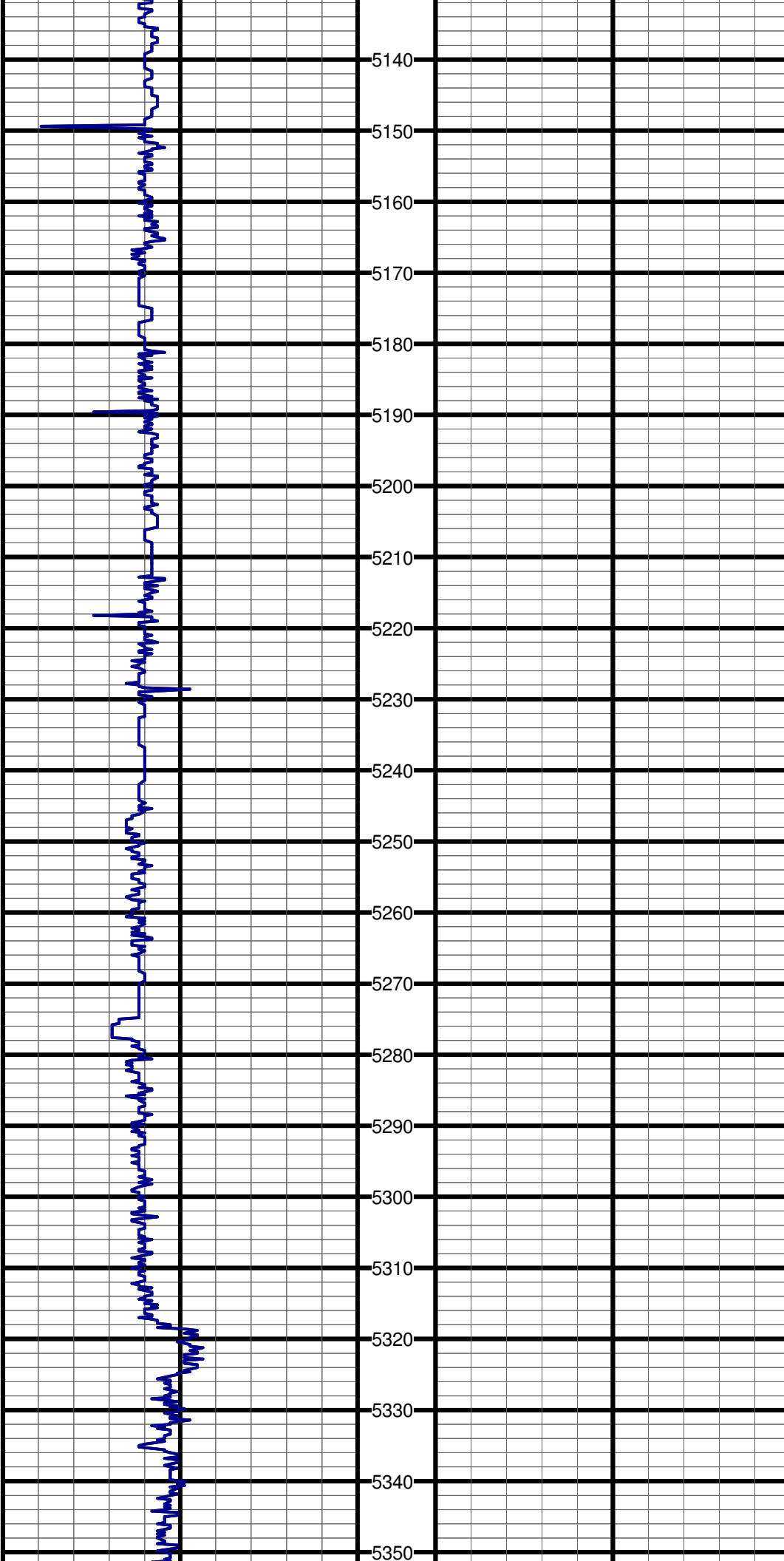
#43 TVD:4778.7 MD:4780.0 I:2.2 A:269.6 VS:43.9

#44 TVD:4842.7 MD:4844.0 I:1.7 A:268.7 VS:46.1

#45 TVD:4873.7 MD:4875.0 I:1.2 A:275.6 VS:46.9

#46 TVD:4905.7 MD:4907.0 I:0.7 A:292.1 VS:47.4





#54 TVD:5159.4 MD:5161.0 I:4.9 A:73.1 VS:38.8

#55 TVD:5191.2 MD:5193.0 I:5.9 A:77.1 VS:35.9

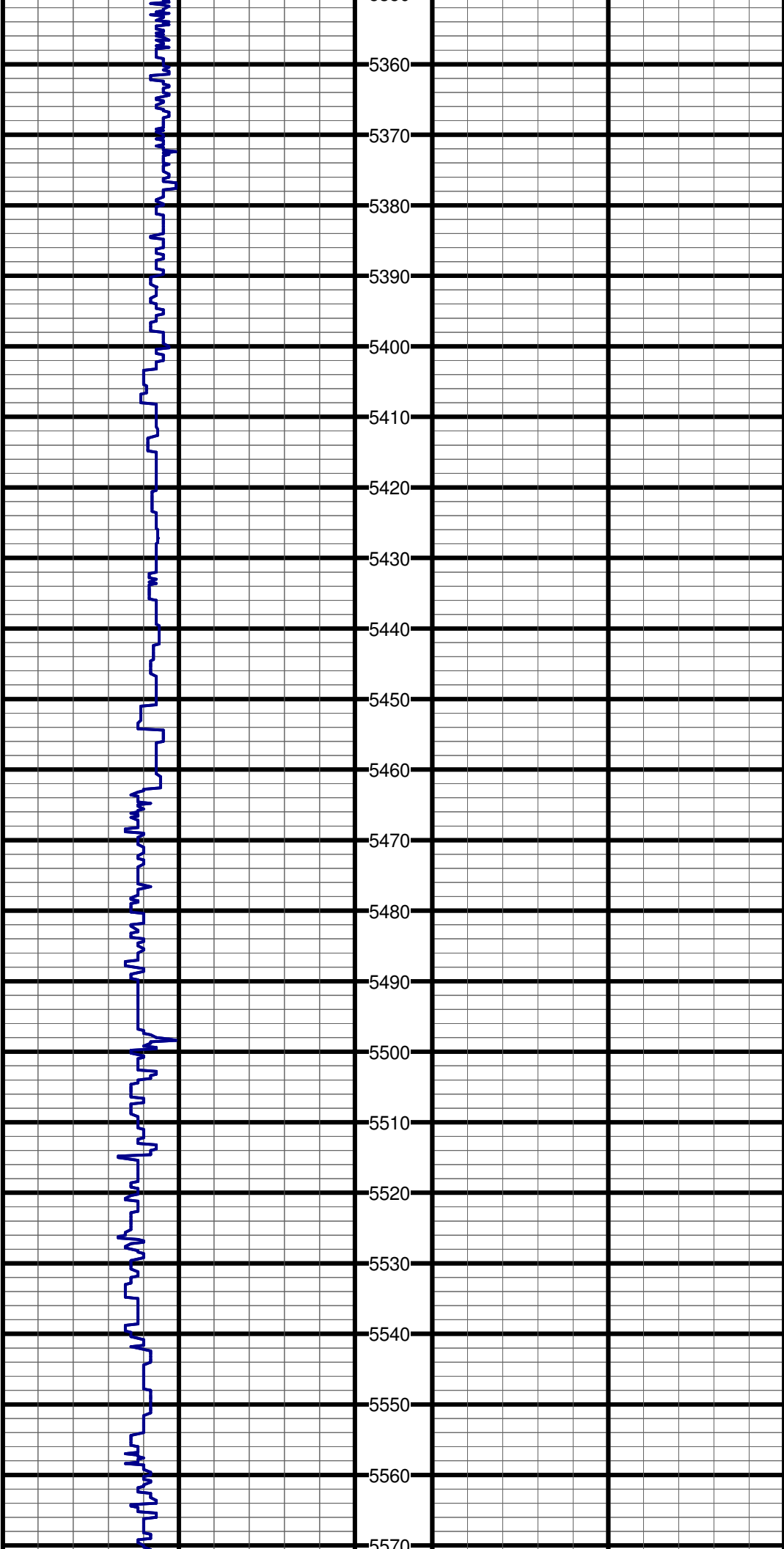
#56 TVD:5223.1 MD:5225.0 I:6.2 A:80.1 VS:32.7

#57 TVD:5253.9 MD:5256.0 I:6.5 A:80.2 VS:29.3

#58 TVD:5285.7 MD:5288.0 I:6.6 A:78.9 VS:25.8

#59 TVD:5317.5 MD:5320.0 I:6.6 A:81.5 VS:22.2

#60 TVD:5349.2 MD:5352.0 I:7.5 A:82.9 VS:18.3



#61 TVD:5379.9 MD:5383.0 I:8.1 A:85.1 VS:14.1

#62 TVD:5411.6 MD:5415.0 I:8.7 A:88.2 VS:9.5

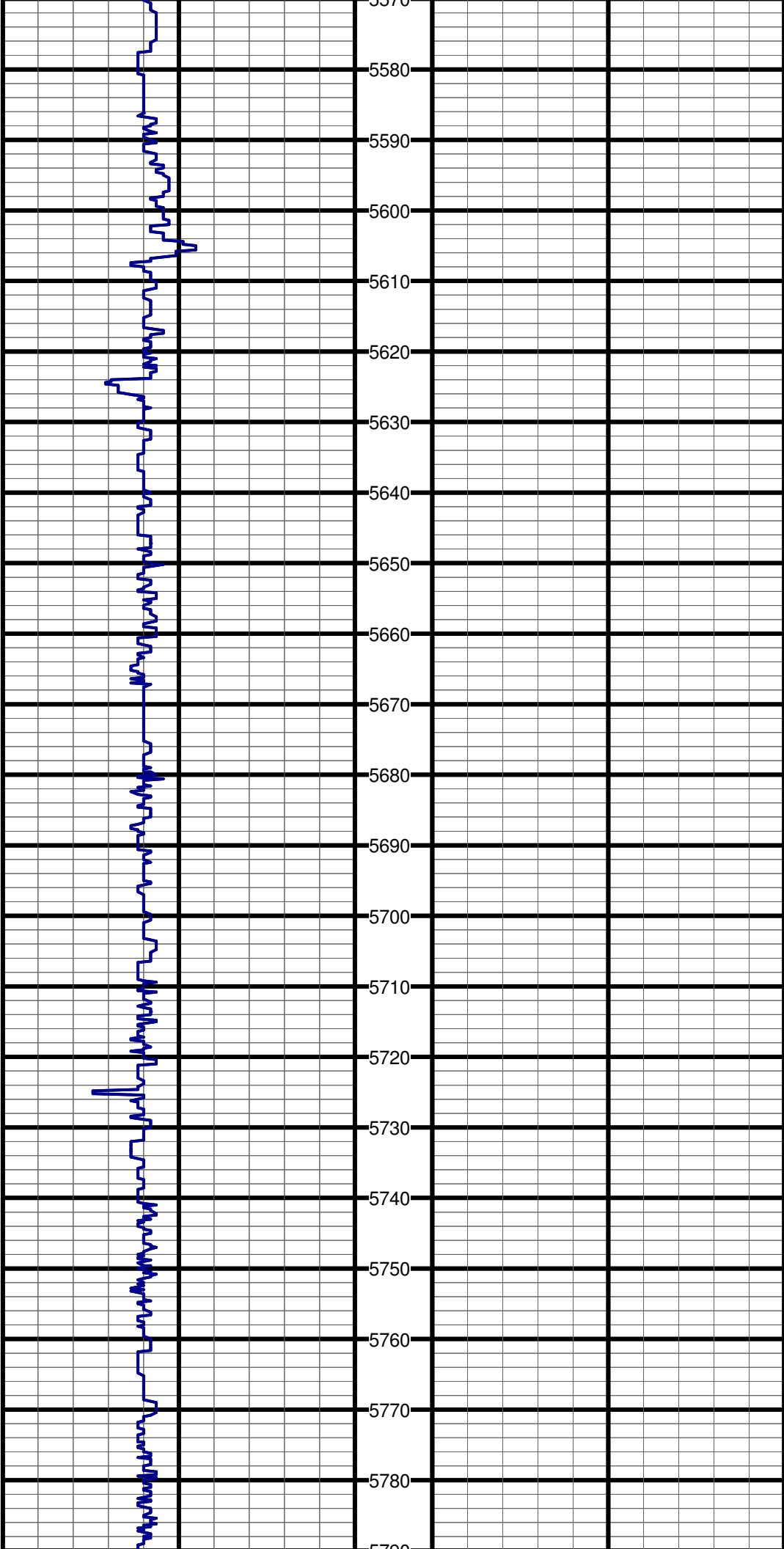
#63 TVD:5443.1 MD:5447.0 I:10.4 A:90.1 VS:4.2

#64 TVD:5474.5 MD:5479.0 I:11.6 A:91.0 VS:-1.9

#65 TVD:5504.8 MD:5510.0 I:13.1 A:91.9 VS:-8.6

#66 TVD:5535.9 MD:5542.0 I:14.5 A:94.3 VS:-16.2

#67 TVD:5566.9 MD:5574.0 I:14.7 A:94.0 VS:-24.2



#68 TVD:5596.9 MD:5605.0 I:14.4 A:90.4 VS:-32.0

#69 TVD:5627.9 MD:5637.0 I:14.6 A:89.7 VS:-40.0

#70 TVD:5658.8 MD:5669.0 I:14.8 A:88.1 VS:-48.1

#71 TVD:5688.8 MD:5700.0 I:14.7 A:85.6 VS:-56.0

#72 TVD:5719.7 MD:5732.0 I:14.9 A:87.3 VS:-64.1

#73 TVD:5750.6 MD:5764.0 I:15.2 A:88.7 VS:-72.4

#74 TVD:5781.5 MD:5796.0 I:15.4 A:88.2 VS:-80.8

