

**HALLIBURTON**

---

# **WILLIAMS PRODUCTION RMT INC - EBUS**

---

**GM 522-23  
GRAND VALLEY  
Garfield County , Colorado**

**Cement Surface Casing**  
**29-Sep-2011**

**Job Site Documents**

*The Road to Excellence Starts with Safety*

Sold To #: 300721	Ship To #: 2879085	Quote #:	Sales Order #: 8478418
Customer: WILLIAMS PRODUCTION RMT INC - EBUS	Customer Rep: Klatt, Brian		
Well Name: GM	Well #: 522-23	API/UWI #: 05-045-20482	
Field: GRAND VALLEY	City (SAP): PARACHUTE	County/Parish: Garfield	State: Colorado
Lat: N 39.506 deg. OR N 39 deg. 30 min. 22.64 secs.	Long: W 108.083 deg. OR W -109 deg. 55 min. 0.959 secs.		
Contractor: NABORS	Rig/Platform Name/Num: NABORS 576		
Job Purpose: Cement Surface Casing			
Well Type: Development Well	Job Type: Cement Surface Casing		
Sales Person: KOHL, KYLE	Srv Supervisor: ANGLESTEIN, TROY	MBU ID Emp #: 436099	

### Job Personnel

HES Emp Name	Exp Hrs	Emp #	HES Emp Name	Exp Hrs	Emp #	HES Emp Name	Exp Hrs	Emp #
ANGLESTEIN, TROY Edward WM	7.5	436099	JENSEN, JESSE Robert	7.5	478774	KEANE, JOHN Donovon	7.5	486519
WALPOLE, DARREN Livingston	7.5	485294						

### Equipment

HES Unit #	Distance-1 way	HES Unit #	Distance-1 way	HES Unit #	Distance-1 way	HES Unit #	Distance-1 way
10551730C	60 mile	10592964	60 mile	10744549	60 mile	10973571	60 mile
11259884	60 mile						

### Job Hours

Date	On Location Hours	Operating Hours	Date	On Location Hours	Operating Hours	Date	On Location Hours	Operating Hours
9/29/2011	7	1	9/30/2011	.5	0			

TOTAL Total is the sum of each column separately

### Job

### Job Times

Formation Name	Top	Bottom	Called Out	Date	Time	Time Zone
Formation Depth (MD)			On Location	29 - Sep - 2011	14:00	MST
Form Type		BHST	Job Started	29 - Sep - 2011	17:00	MST
Job depth MD	950. ft	Job Depth TVD	Job Completed	29 - Sep - 2011	22:19	MST
Water Depth		Wk Ht Above Floor	Departed Loc	29 - Sep - 2011	23:03	MST
Perforation Depth (MD)	From	To		30 - Sep - 2011	00:30	MST

### Well Data

Description	New / Used	Max pressure psig	Size in	ID in	Weight lbm/ft	Thread	Grade	Top MD ft	Bottom MD ft	Top TVD ft	Bottom TVD ft
OPEN HOLE SECTION				13.5				.	950.		
SURFACE CASING	Unknown		9.625	8.921	36.		H-40	.	935.		

### Sales/Rental/3<sup>rd</sup> Party (HES)

Description	Qty	Qty uom	Depth	Supplier
PLUG,CMTG,TOP,9 5/8,HWE,8.16 MIN/9.06 MA	1	EA		

### Tools and Accessories

Type	Size	Qty	Make	Depth	Type	Size	Qty	Make	Depth	Type	Size	Qty	Make
Guide Shoe					Packer					Top Plug	9.625	1	HES
Float Shoe					Bridge Plug					Bottom Plug			
Float Collar					Retainer					SSR plug set			
Insert Float										Plug Container	9.625	1	HES
Stage Tool										Centralizers			

### Miscellaneous Materials

Gelling Agt	Conc	Surfactant	Conc	Acid Type	Qty	Conc	%
Treatment Fld	Conc	Inhibitor	Conc	Sand Type	Size	Qty	

### Fluid Data

Stage/Plug #: 1

## Cementing Job Summary

Fluid #	Stage Type	Fluid Name	Qty	Qty uom	Mixing Density lbm/gal	Yield ft <sup>3</sup> /sk	Mix Fluid Gal/sk	Rate bbl/min	Total Mix Fluid Gal/sk
1	Water Spacer		20.00	bbl	8.34	.0	.0	6.0	
2	VersaCem Tail Cement	VERSACEM (TM) SYSTEM (452010)	260.0	sacks	12.8	2.11	11.76	8	11.76
		11.76 Gal FRESH WATER							
3	Displacement Fluid		69.00	bbl	8.34	.0	.0	10	
<b>Calculated Values</b>		<b>Pressures</b>		<b>Volumes</b>					
Displacement	68.9	Shut In: Instant		Lost Returns	0	Cement Slurry	89.9	Pad	
Top Of Cement	SURFACE	5 Min		Cement Returns	5	Actual Displacement	68.9	Treatment	
Frac Gradient		15 Min		Spacers	20	Load and Breakdown		Total Job	186.6
<b>Rates</b>									
Circulating	14	Mixing	8	Displacement	10	Avg. Job	8		
Cement Left In Pipe	Amount	43.68 ft	Reason	Shoe Joint					
Frac Ring # 1 @	ID		Frac ring # 2 @	ID		Frac Ring # 3 @	ID		Frac Ring # 4 @
The Information Stated Herein Is Correct				Customer Representative Signature					



*The Road to Excellence Starts with Safety*

Sold To #: 300721	Ship To #: 2879085	Quote #:	Sales Order #: 8478418
Customer: WILLIAMS PRODUCTION RMT INC - EBUS		Customer Rep: Klatt, Brian	
Well Name: GM	Well #: 522-23	API/UWI #: 05-045-20482	
Field: GRAND VALLEY	City (SAP): PARACHUTE	County/Parish: Garfield	State: Colorado
Legal Description:			
Lat: N 39.506 deg. OR N 39 deg. 30 min. 22.64 secs.		Long: W 108.083 deg. OR W -109 deg. 55 min. 0.959 secs.	
Contractor: NABORS		Rig/Platform Name/Num: NABORS 576	
Job Purpose: Cement Surface Casing			Ticket Amount:
Well Type: Development Well		Job Type: Cement Surface Casing	
Sales Person: KOHL, KYLE		Srv Supervisor: ANGLESTEIN, TROY	MBU ID Emp #: 436099

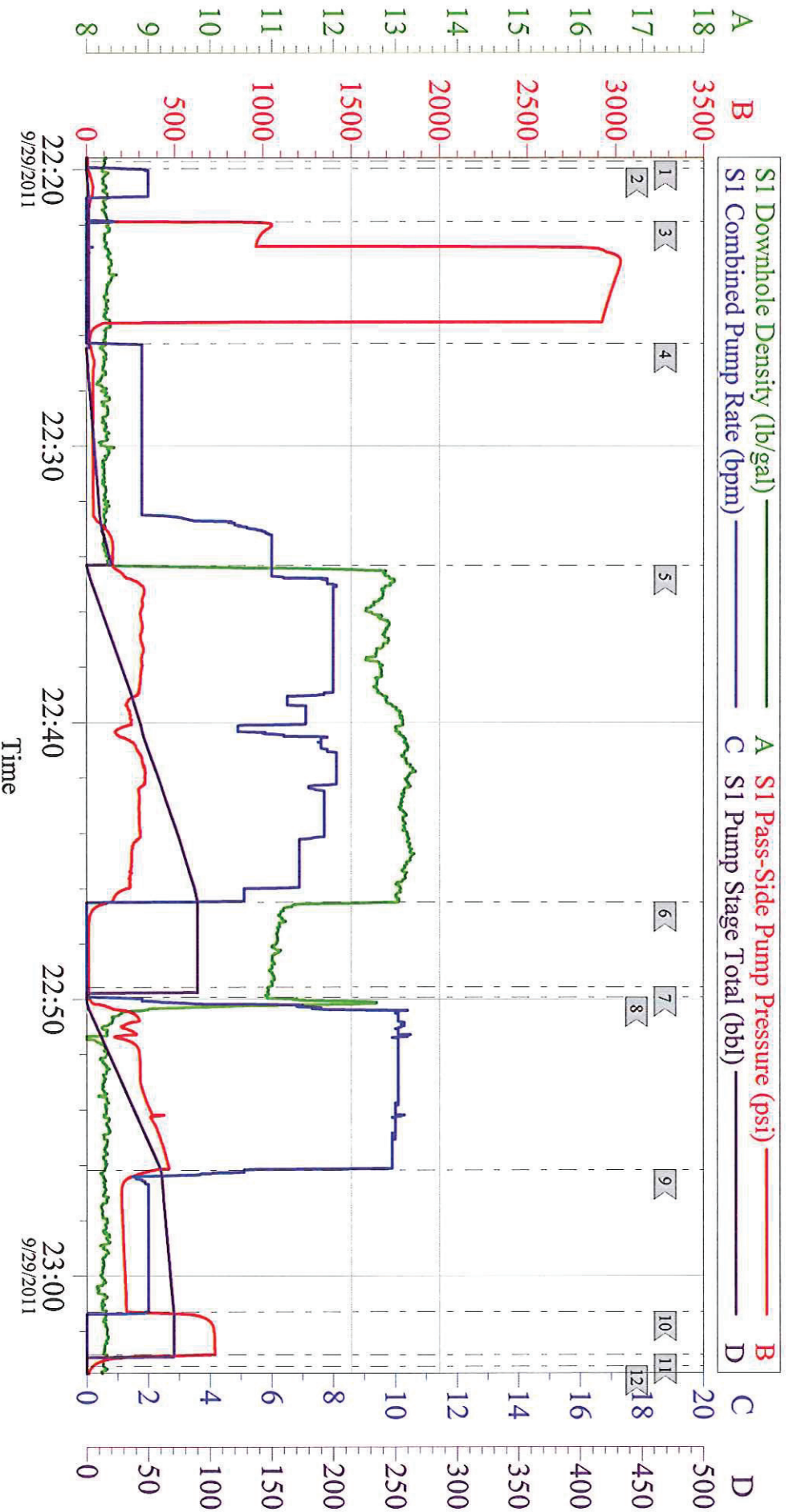
Activity Description	Date/Time	Cht #	Rate bbl/min	Volume bbl		Pressure psig		Comments
				Stage	Total	Tubing	Casing	
Call Out	09/29/2011 14:00							
Pre-Convoy Safety Meeting	09/29/2011 15:30							ALL HES EMPLOYEES
Arrive At Loc	09/29/2011 17:00							RIG STILL RUNNING CASING CIRCULATED FOR 1 HOUR
Assessment Of Location Safety Meeting	09/29/2011 17:10							ALL HES EMPLOYEES
Rig-Up Equipment	09/29/2011 21:00							1 HT 400 PUMP TRUCK, 1 660 BULK TRUCK, 1 9.625 QUICK LATCH PLUG CONTAINER, 1 F 450 P/U
Pre-Job Safety Meeting	09/29/2011 22:00							ALL HES EMPLOYEES, RIG CREW, CO REP.
Start Job	09/29/2011 22:19							9.625 CASING SET AT 935', FC 891.32', TD: 950, OPEN HOLE 13.5", MUD WT 10 PPG, 800 BBLS OF H2O ON LOCATION, WATER SAMPLE SUBMITTED.
Pump Water	09/29/2011 22:19		2	2			33.0	FILL LINES
Pressure Test	09/29/2011 22:21		0.5	0.5		3020.0		NO LEAKS
Pump Spacer 1	09/29/2011 22:26		6	20			128.0	FRESH WATER
Activity Description	Date/Time	Cht #	Rate bbl/min	Volume bbl		Pressure psig		Comments
				Stage	Total	Tubing	Casing	

## Cementing Job Log

Pump Tail Cement	09/29/2011 22:34		8	89.9			300.0	260 SKS VERSACEM CMT TO BE MIXED AT 12.8 PPG, 2.11 YIELD, 11.75 GAL/SK, CMT TO BE WEIGHED VIA PRESSURE BALANCED MUD SCALES. WET AND DRY SAMPLES SUBMITTED. HES HAD TROUBLE MIXING CEMENT DUE TO WATER FLOWMETER GOING OUT.
Shutdown	09/29/2011 22:46							FOR NO MORE THEN 5 MINUTES,
Drop Plug	09/29/2011 22:49							PLUG LAUNCHED
Pump Displacement	09/29/2011 22:49		10	68.9			430.0	FRESHWATER
Slow Rate	09/29/2011 22:56		2	58			180.0	10 BBLS PRIOR TO CALCULATED DISPLACEMENT
Cement Returns to Surface	09/29/2011 22:57		2	62			190.0	5 BBLS OF CEMENT TO SURFACE.
Bump Plug	09/29/2011 23:01		2	68.9			210.0	PLUG LANDED AT 720 HELD FOR TWO MINUTES
Check Floats	09/29/2011 23:02							FLOATS HOLDING, NO ANNULAR FLOW NOTED
End Job	09/29/2011 23:03							THANK YOU FOR USING HES FROM TROY ANGLESTEIN AND CREW.
Post-Job Safety Meeting (Pre Rig-Down)	09/29/2011 23:15							ALL HES EMPLOYEES
Rig-Down Equipment	09/29/2011 23:30							SAFELY
Pre-Convoy Safety Meeting	09/30/2011 00:15							ALL HES EMPLOYEES
Crew Leave Location	09/30/2011 00:30							SITE WAS AS CLEAN AS WHEN WE ARRIVED

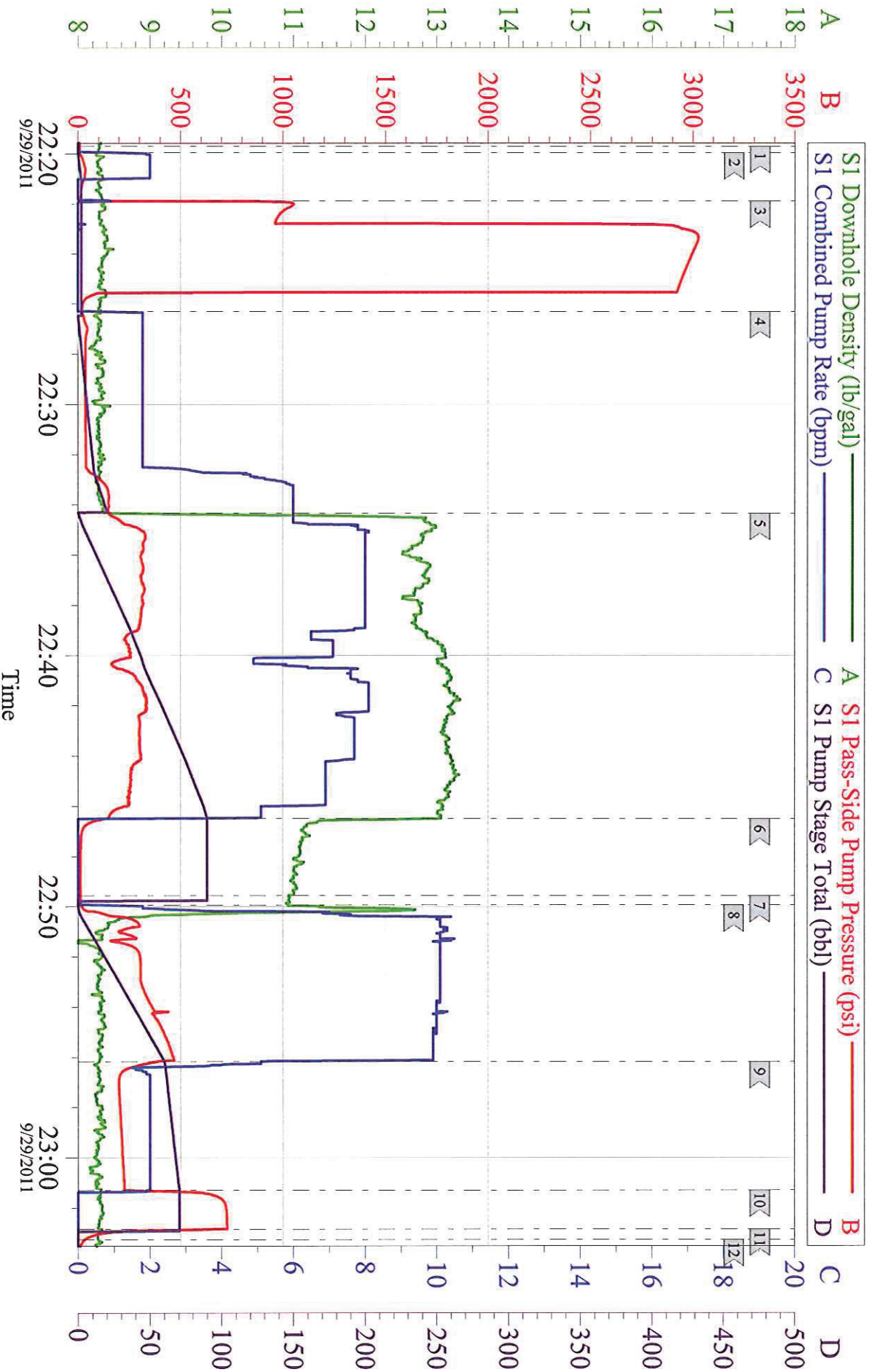


# WILLIAMS GM 522-23 SURFACE



Customer: WILLIAMS	Job Date: 29-Sep-2011	Sales Order #: 8478418
Well Description: GM 522-23	Job Type: SURFACE	ADC Used: YES
Company Rep: BRIAN KLATT	Cement Supervisor: TROY ANGLESTEIN	Elite #: 2 JESSE JENSEN

# WILLIAMS GM 522-23 SURFACE



Customer: WILLIAMS	Job Date: 29-Sep-2011	Sales Order #: 8478418
Well Description: GM 522-23	Job Type: SURFACE	ADC Used: YES
Company Rep: BRIAN KLATT	Cement Supervisor: TROY ANGLESTEIN	Elite #: 2 JESSE JENSEN