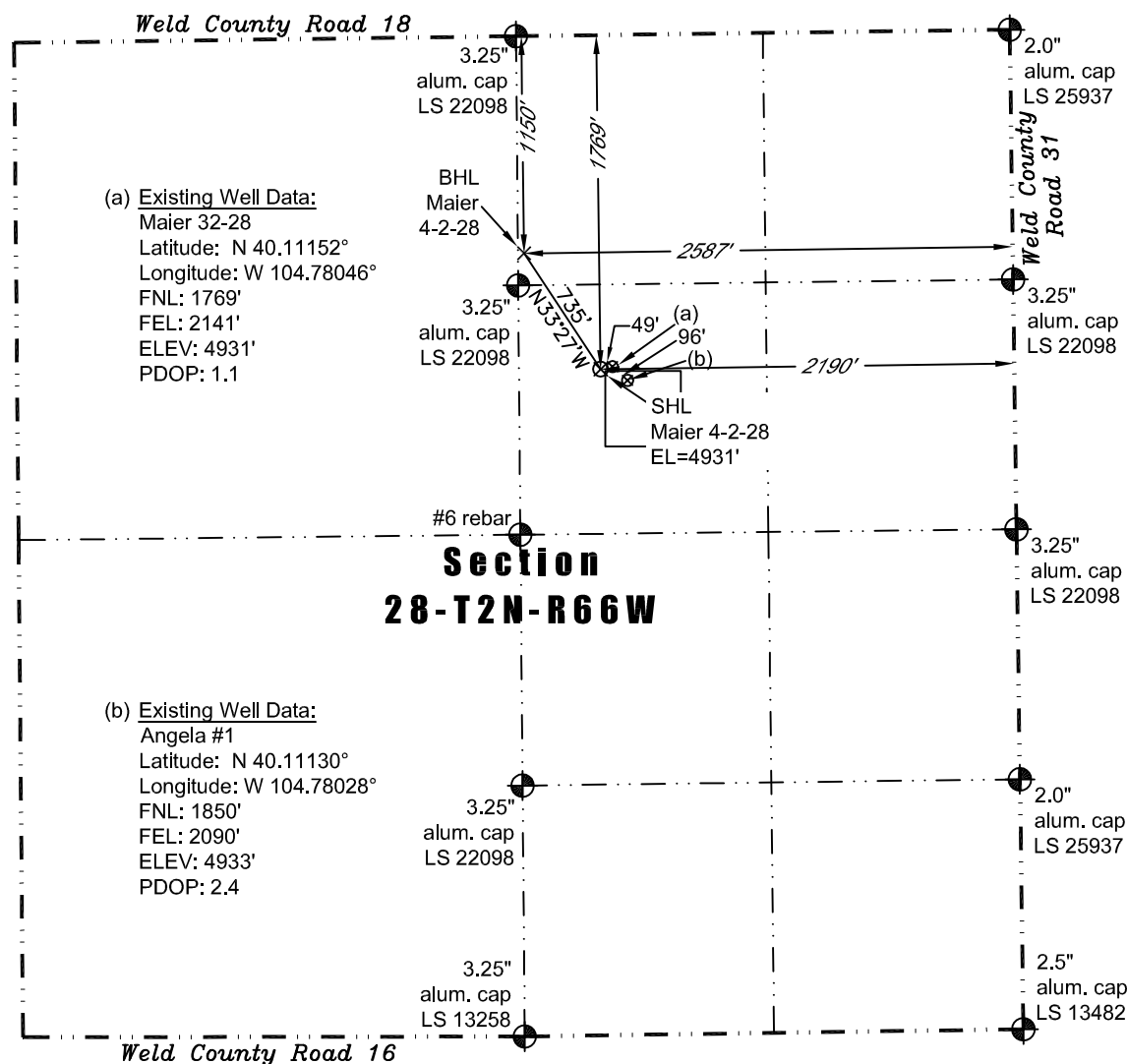


# WELL LOCATION CERTIFICATE

THIS MAP DOES NOT REPRESENT A BOUNDARY SURVEY



In accordance with a request from Jay Knutson of EnCana Oil & Gas (USA) Inc., PLS Group, LLC has determined the location of the **Maier 4-2-28** well site to be SHL: 1769' FNL and 2190' FEL, (BHL 1150' FNL and 2587' FEL), as measured at ninety (90) degrees from the section lines of Section 28, Township 2 North, Range 66 West of the 6th Principal Meridian, Weld County Colorado.

## Proposed Surface Hole Data:

Latitude: N 40.11153° (BHL: 40.11322°)  
Longitude: W 104.78064° (BHL: 104.78207°)  
PDOP: 1.2

## Nearest:

Building 1,146' southwest  
Public Road 2,170' east  
Property Line 432' west  
Existing Well: Maier 32-28 49' east

Above Ground Utility 2,010' east  
Railroad 7,768' west  
Well Window: SHL is 27' outside

## Notes:

- 1) Bearings and distances based on NAD 83 Colorado North State Plane Coordinates using RTK GPS observations taken 7/17/11 by operator Tom Winans.
- 2) Conversion factor to ground (1.000274424).
- 3) Elevations based on NAVD 88 GPS heights and Geoid 2003 corrections.
- 4) See Location Drawing for visible improvements within 400 feet of Pad Site.
- 5) The surface use is cultivated field.

**NOTICE:** According to Colorado law you must commence any legal action based upon any defect in this W.L.C. within three years after you first discover such defect. In no event may any action based upon any defect in this W.L.C. be commenced more than ten years from this said date of the certification shown hereon.

I hereby certify that this Well Location Certificate was prepared by me or under my direct supervision on 8/18/2011 for and on behalf of EnCana Oil & Gas (USA) Inc. That it is not a Land Survey Plat or an Improvement Survey Plat and that it is not to be relied upon for establishment of fences, buildings, or other future improvement lines.

John Robert McGehee LS#38219  
Well: Maier 4-2-28 WLC