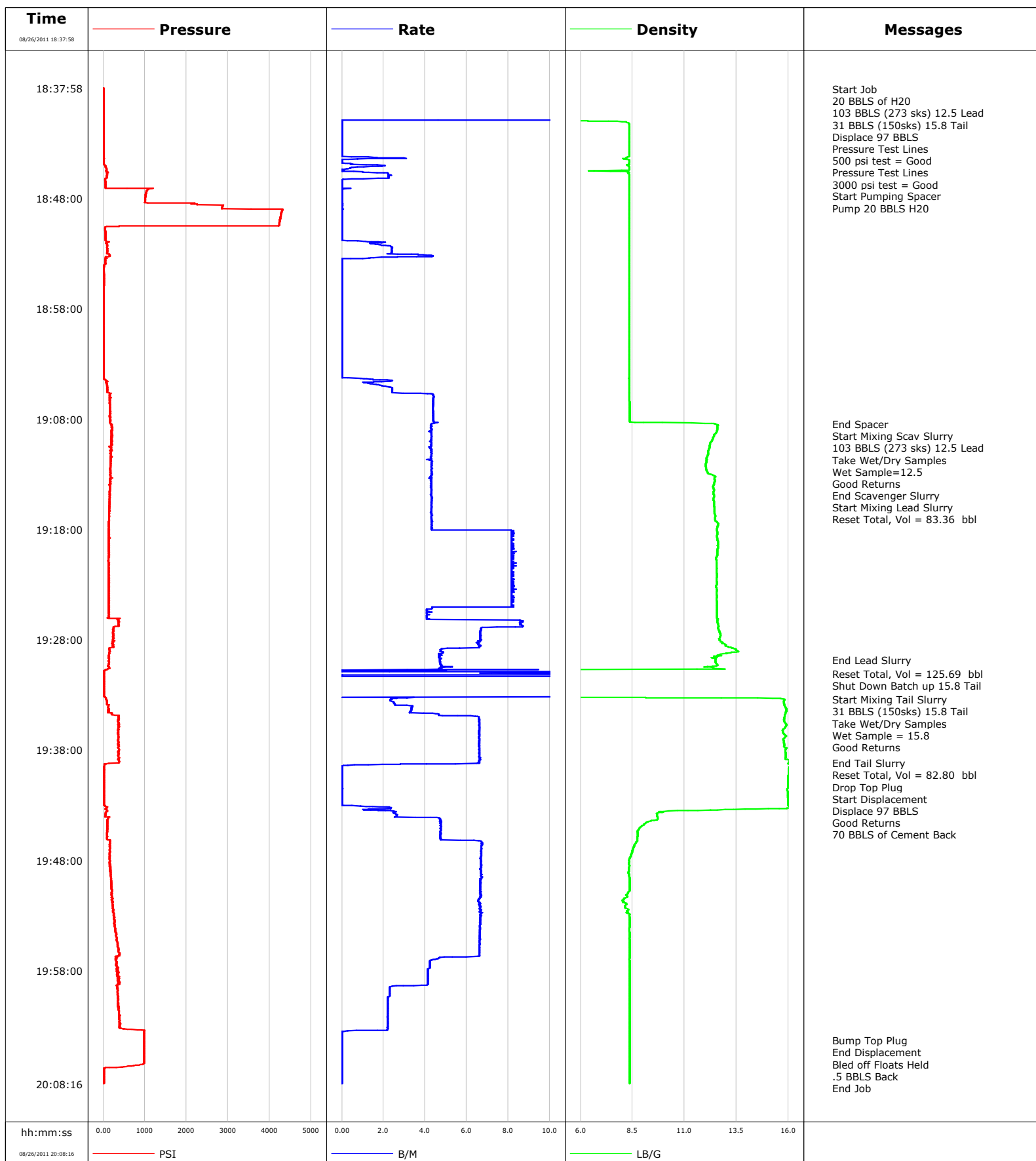


Well FEDERAL SAVAGE 11-6B
Field South Parachute
Engineer Tom Leduc
Country United States

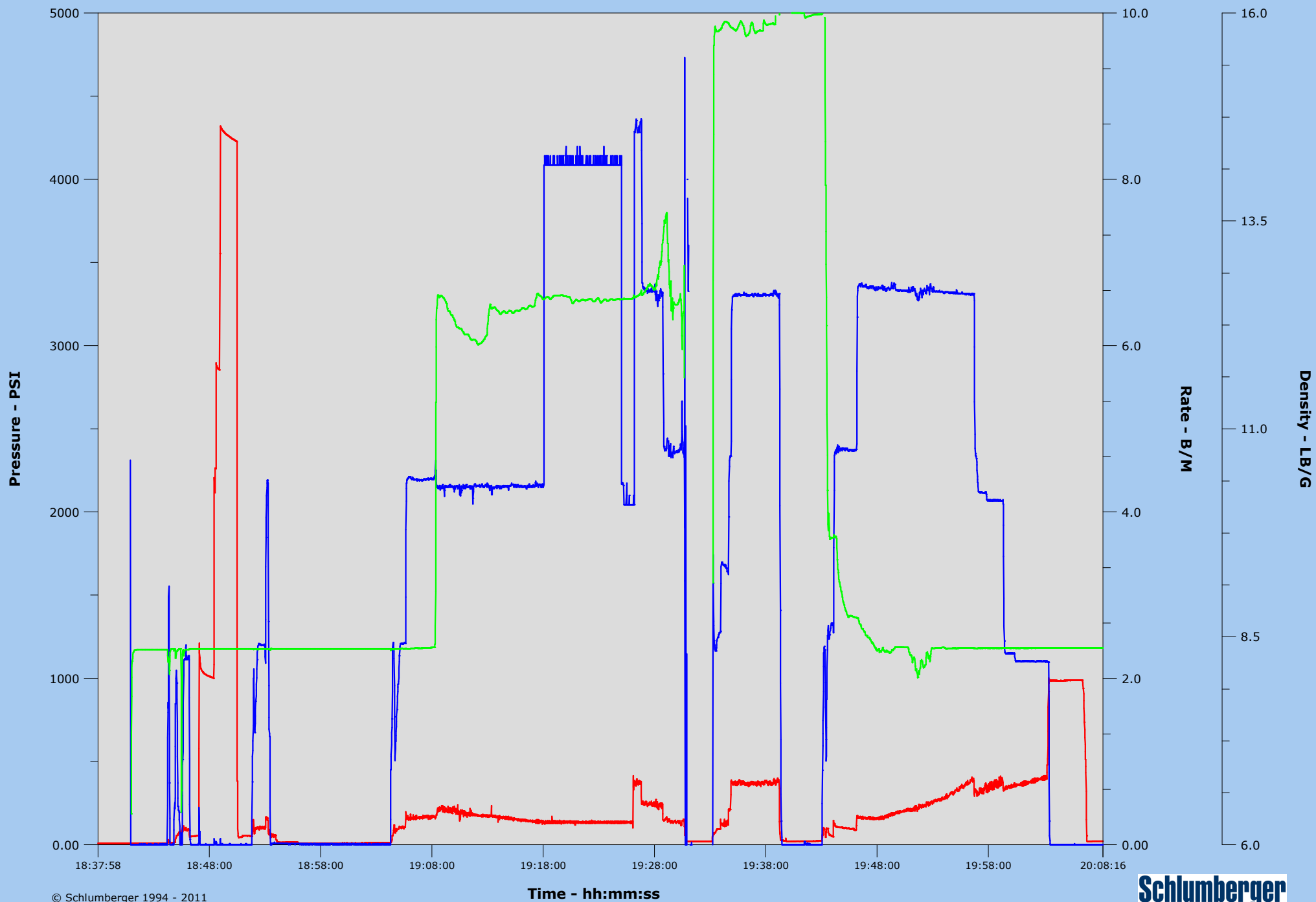
Client Encana
SIR No.
Job Type 9 5/8 Surfce
Job Date 08-26-2011



Cementing

PRD Post Job Plot

— Pressure — Rate — Density





Cementing Service Report

				Customer Encana		Job Number BUNM-00074		
Well FEDERAL SAVAGE 11-6B 11-6B			Location (legal) South Parachute		Schlumberger Location Grand Junction		Job Start Aug/26/2011	
Field South Parachute		Formation Name/Type Shale		Deviation	Bit Size 12.3 in	Well MD 1301.0 ft	Well TVD 1316.0 ft	
County Garfield		State/Province Colorado		BHP	BHST 95 degF	BHCT 83 degF	Pore Press. Gradient	
Well Master 0631304248		API/UWI						
Rig Name Nabors M11		Drilled For Gas	Service Via Land	Casing/Liner				
				Depth, ft	Size, in	Weight, lb/ft	Grade	Thread
Offshore Zone		Well Class New	Well Type Development	1301.0	9.630	65.0	K55	8RD
				0.0	0.000	0.0		
Drilling Fluid Type Bentonite		Max. Density 9.70 lb/gal	Plastic Viscosity 30.000 cP	Tubing/Drill Pipe				
				Depth,	Size,	Weight,	Grade	Thread
Service Line Cementing		Job Type 9 5/8 Surface						
Max. Allowed Tub. Press 3000 psi		Max. Allowed Ann. Press 500 psi	WH Connection Single Cement head	Perforations/Open Hole				
				Top,	Bottom,		No. of Shots	Total Interval
Service Instructions 9 5/8 Surface @ 1301ft								Diameter
		Treat Down Casing		Displacement 97.0 bbl		Packer Type		Packer Depth
Tubing Vol.		Casing Vol. 100.0 bbl		Annular Vol. 76.0 bbl		Openhole Vol. 180.0 bbl		
Casing/Tubing Secured <input checked="" type="checkbox"/>		1 Hole Vol. Circulated prior to Cement <input checked="" type="checkbox"/>		Casing Tools		Squeeze Job		
Lift Pressure 644 psi				Shoe Type Float		Squeeze Type		
Pipe Rotated <input type="checkbox"/>		Pipe Reciprocated <input type="checkbox"/>		Shoe Depth 1301.0 ft		Tool Type		
No. Centralizers		Top Plugs 1	Bottom Plugs	Stage Tool Type		Tool Depth		
Cement Head Type Single				Stage Tool Depth		Tail Pipe Size		
Job Scheduled For Aug/26/2011 16:30		Arrived on Location Aug/26/2011 16:30		Leave Location Aug/26/2011 21:00		Collar Type Float		Tail Pipe Depth
						Collar Depth 1257.0 ft		Sqz. Total Vol.
Date	Time 24-hr clock	Treating Pressure PSI	Flow Rate B/M	Density LB/G	Volume BBL	Message		
08/26/2011	18:37:58	8	25.0	-0.02	0.4			
08/26/2011	18:38:05					Start Job		
08/26/2011	18:38:05	8	25.0	-0.02	3.3			
08/26/2011	18:38:08					20 BBLS of H2O		
08/26/2011	18:38:08					103 BBLS (273 sks) 12.5 Lead		
08/26/2011	18:38:08					31 BBLS (150sks) 15.8 Tail		
08/26/2011	18:38:08					Displace 97 BBLS		
08/26/2011	18:38:08	8	25.0	-0.02	4.6			
08/26/2011	18:38:18					Pressure Test Lines		
08/26/2011	18:38:18	8	25.0	-0.02	8.8			
08/26/2011	18:38:22					500 psi test = Good		
08/26/2011	18:38:22	8	25.0	-0.02	10.4			
08/26/2011	18:38:24					Pressure Test Lines		
08/26/2011	18:38:24	8	25.0	-0.02	11.3			
08/26/2011	18:38:26					3000 psi test = Good		
08/26/2011	18:38:26	8	25.0	-0.02	12.1			
08/26/2011	18:38:45					Start Pumping Spacer		
08/26/2011	18:38:45	6	25.0	-0.02	0.8			
08/26/2011	18:38:50					Pump 20 BBLS H2O		
08/26/2011	18:38:50	6	25.0	-0.02	2.9			
08/26/2011	18:39:38	7	25.0	-0.02	22.9			

Well			Field		Job Start		Customer		Job Number	
FEDERAL SAVAGE 11-6B 11-6B			South Parachute		Aug/26/2011		Encana		BUNM-00074	
Date	Time 24-hr clock	Treating Pressure PSI	Flow Rate B/M	Density LB/G	Volume BBL	Message				
08/26/2011	18:42:58	6	0.0	8.34	54.7					
08/26/2011	18:44:38	10	0.0	8.35	55.1					
08/26/2011	18:46:18	48	0.0	8.35	56.9					
08/26/2011	18:47:58	1011	0.0	8.35	57.0					
08/26/2011	18:49:38	4262	0.0	8.35	57.0					
08/26/2011	18:51:18	50	0.0	8.35	57.0					
08/26/2011	18:52:58	98	2.4	8.35	59.3					
08/26/2011	18:54:38	12	0.0	8.35	60.8					
08/26/2011	18:56:18	8	0.0	8.35	60.8					
08/26/2011	18:57:58	8	0.0	8.35	60.8					
08/26/2011	18:59:38	8	0.0	8.35	60.8					
08/26/2011	19:01:18	9	0.0	8.35	60.8					
08/26/2011	19:02:58	9	0.0	8.35	60.8					
08/26/2011	19:04:38	92	1.5	8.35	61.5					
08/26/2011	19:06:18	178	4.4	8.36	66.4					
08/26/2011	19:07:58	166	4.4	8.36	73.7					
08/26/2011	19:08:26					End Spacer				
08/26/2011	19:08:26	178	4.3	12.45	75.8					
08/26/2011	19:08:30					Start Mixing Scav Slurry				
08/26/2011	19:08:30	193	4.3	12.59	76.1					
08/26/2011	19:08:35					103 BBLS (273 sks) 12.5 Lead				
08/26/2011	19:08:35					Take Wet/Dry Samples				
08/26/2011	19:08:35					Wet Sample=12.5				
08/26/2011	19:08:35	221	4.3	12.60	76.4					
08/26/2011	19:08:36					Good Returns				
08/26/2011	19:08:36	207	4.3	12.60	76.5					
08/26/2011	19:08:56					End Scavenger Slurry				
08/26/2011	19:08:56	210	4.3	12.58	77.9					
08/26/2011	19:08:58					Start Mixing Lead Slurry				
08/26/2011	19:08:58	196	4.3	12.58	78.1					
08/26/2011	19:09:38	216	4.3	12.39	80.9					
08/26/2011	19:10:12					Reset Total, Vol = 83.36 bbl				
08/26/2011	19:10:12	214	4.3	12.23	83.4					
08/26/2011	19:11:18	179	4.3	12.11	88.1					
08/26/2011	19:12:58	168	4.3	12.16	95.2					
08/26/2011	19:14:38	154	4.3	12.39	102.4					
08/26/2011	19:16:18	148	4.3	12.44	109.6					
08/26/2011	19:17:58	131	4.3	12.56	116.8					
08/26/2011	19:19:38	122	8.2	12.60	130.0					
08/26/2011	19:21:18	132	8.4	12.53	143.6					
08/26/2011	19:22:58	136	8.2	12.56	157.3					
08/26/2011	19:24:38	127	8.2	12.56	170.9					
08/26/2011	19:26:18	360	8.6	12.58	180.0					
08/26/2011	19:27:58	229	6.6	12.69	192.2					
08/26/2011	19:29:38	131	4.7	12.43	201.6					
08/26/2011	19:29:53					End Lead Slurry				
08/26/2011	19:29:53	141	4.7	12.49	202.8					
08/26/2011	19:31:06					Reset Total, Vol = 125.69 bbl				
08/26/2011	19:31:06	16	25.0	-0.01	209.0					
08/26/2011	19:31:14					Shut Down Batch up 15.8 Tail				
08/26/2011	19:31:14	15	0.0	-0.02	211.3					
08/26/2011	19:31:18	15	0.0	-0.02	211.3					
08/26/2011	19:32:58	17	25.0	-0.02	251.5					
08/26/2011	19:33:26					Start Mixing Tail Slurry				

Well FEDERAL SAVAGE 11-6B 11-6B			Field South Parachute	Job Start Aug/26/2011	Customer Encana	Job Number BUNM-00074
Date	Time 24-hr clock	Treating Pressure PSI	Flow Rate B/M	Density LB/G	Volume BBL	Message
08/26/2011	19:33:29					31 BBLS (150sks) 15.8 Tail
08/26/2011	19:33:29	75	2.3	15.81	258.4	
08/26/2011	19:33:30					Take Wet/Dry Samples
08/26/2011	19:33:30					Wet Sample = 15.8
08/26/2011	19:33:30	78	2.3	15.80	258.4	
08/26/2011	19:33:32					Good Returns
08/26/2011	19:33:32	85	2.3	15.78	258.5	
08/26/2011	19:34:38	150	3.2	15.87	261.8	
08/26/2011	19:36:18	361	6.6	15.73	272.2	
08/26/2011	19:37:58	385	6.6	15.86	283.2	
08/26/2011	19:39:12					End Tail Slurry
08/26/2011	19:39:12	336	6.6	16.01	291.4	
08/26/2011	19:39:17					Reset Total, Vol = 82.80 bbl
08/26/2011	19:39:17	28	2.8	16.05	291.8	
08/26/2011	19:39:19					Drop Top Plug
08/26/2011	19:39:19	25	1.9	16.11	291.9	
08/26/2011	19:39:21					Start Displacement
08/26/2011	19:39:21	25	1.3	16.10	292.0	
08/26/2011	19:39:23					Displace 97 BBLS
08/26/2011	19:39:23					Good Returns
08/26/2011	19:39:23					70 BBLS of Cement Back
08/26/2011	19:39:23	25	0.3	16.09	292.0	
08/26/2011	19:39:38	22	0.0	16.03	292.0	
08/26/2011	19:41:18	19	0.0	15.99	292.0	
08/26/2011	19:42:58	21	0.0	15.98	292.0	
08/26/2011	19:44:38	101	4.7	9.15	296.8	
08/26/2011	19:46:18	157	6.7	8.71	304.9	
08/26/2011	19:47:58	160	6.7	8.33	316.1	
08/26/2011	19:49:38	190	6.7	8.37	327.2	
08/26/2011	19:51:18	216	6.7	8.25	338.4	
08/26/2011	19:52:58	252	6.6	8.36	349.4	
08/26/2011	19:54:38	306	6.6	8.36	360.5	
08/26/2011	19:56:18	372	6.6	8.36	371.5	
08/26/2011	19:57:58	328	4.1	8.36	379.8	
08/26/2011	19:59:38	334	2.3	8.36	386.2	
08/26/2011	20:01:18	380	2.2	8.36	389.9	
08/26/2011	20:02:58	386	2.2	8.36	393.6	
08/26/2011	20:04:21					Bump Top Plug
08/26/2011	20:04:21	984	0.0	8.36	394.7	
08/26/2011	20:04:25					End Displacement
08/26/2011	20:04:25	985	0.0	8.36	394.7	
08/26/2011	20:04:28					Bled off Floats Held
08/26/2011	20:04:28	984	0.0	8.36	394.7	
08/26/2011	20:04:29					.5 BBLS Back
08/26/2011	20:04:29	984	0.0	8.36	394.7	
08/26/2011	20:04:38	985	0.0	8.36	394.7	
08/26/2011	20:06:18	987	0.0	8.36	394.7	
08/26/2011	20:07:58	18	0.0	8.36	394.7	
08/26/2011	20:08:11					End Job

Well FEDERAL SAVAGE 11-6B 11-6B	Field South Parachute	Job Start Aug/26/2011	Customer Encana	Job Number BUNM-00074
---	---------------------------------	---------------------------------	---------------------------	---------------------------------

Post Job Summary

Average Pump Rates, bbl/min					Volume of Fluid Injected, bbl			
Slurry 6.0	N2	Mud 0.0	Maximum Rate 25.0	Total Slurry 394.7	Mud 0.0	Spacer 76.2	N2	
Treating Pressure Summary, psi					Breakdown Fluid			
Maximum 4318	Final 18	Average 273	Bump Plug to 980	Breakdown	Type FreshWater	Volume 97.0 bbl	Density 8.34 lb/gal	
Avg. N2 Percent	Designed Slurry Volume 134.0 bbl		Displacement 102.8 bbl	Mix Water Temp 88 degF	Cement Circulated to Surface? <input checked="" type="checkbox"/>	Volume		
					Washed Thru Perfs <input type="checkbox"/>	To		
Customer or Authorized Representative Les Fruglevand			Schlumberger Supervisor Tom Leduc			Circulation Lost <input type="checkbox"/>	Job Completed <input checked="" type="checkbox"/>	