

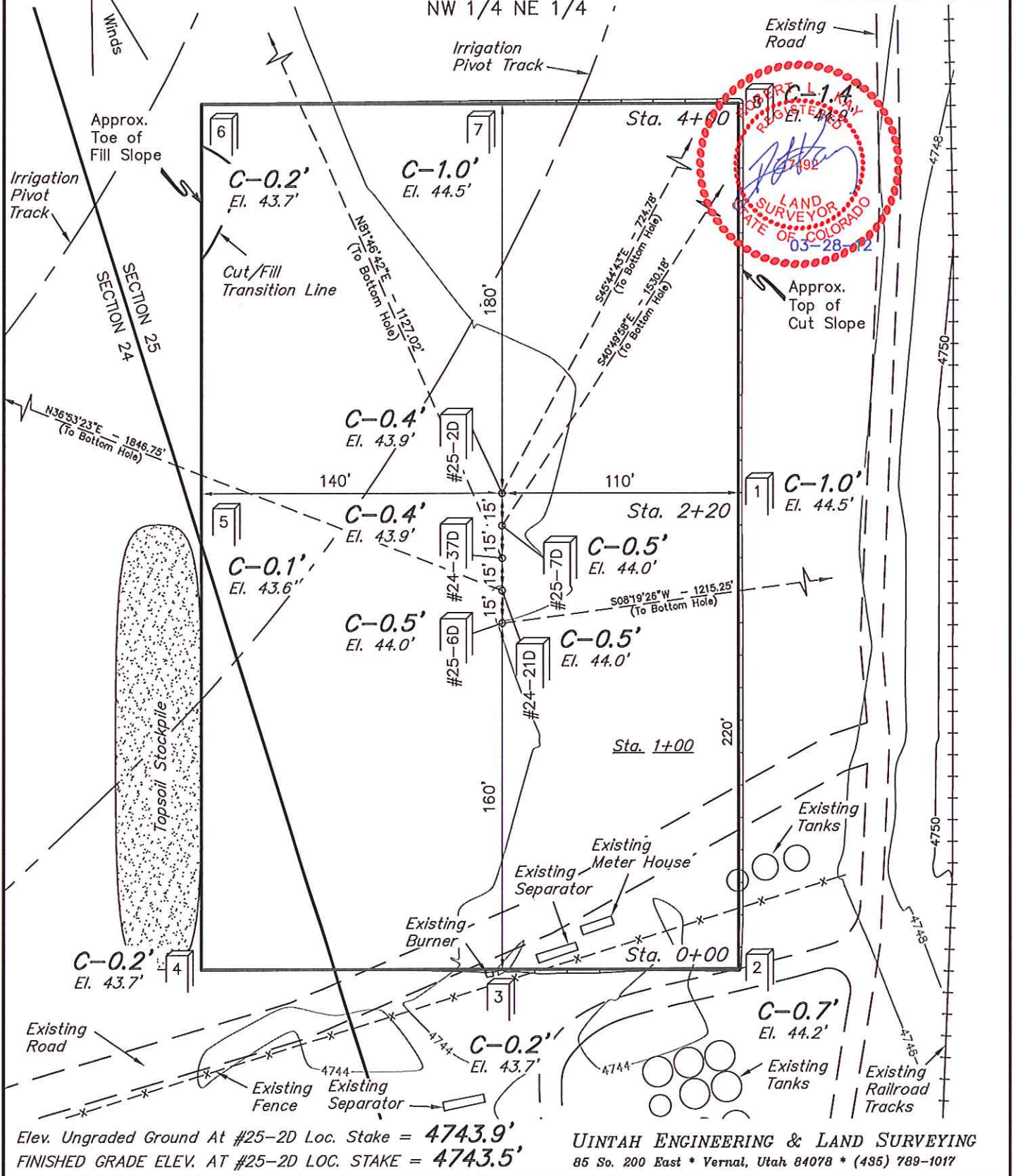
GREAT WESTERN OIL & GAS COMPANY

CONSTRUCTION LAYOUT FOR

DETRER FD #25-6D, #24-21D, #24-37D,
#25-7D, & #25-2D
SECTION 25, T6N, R67W, 6th P.M.
NW 1/4 NE 1/4

FIGURE #1

SCALE: 1" = 60'
DATE: 03-14-12
DRAWN BY: T.B.
REVISED: 03-23-12
REVISED: 03-28-12

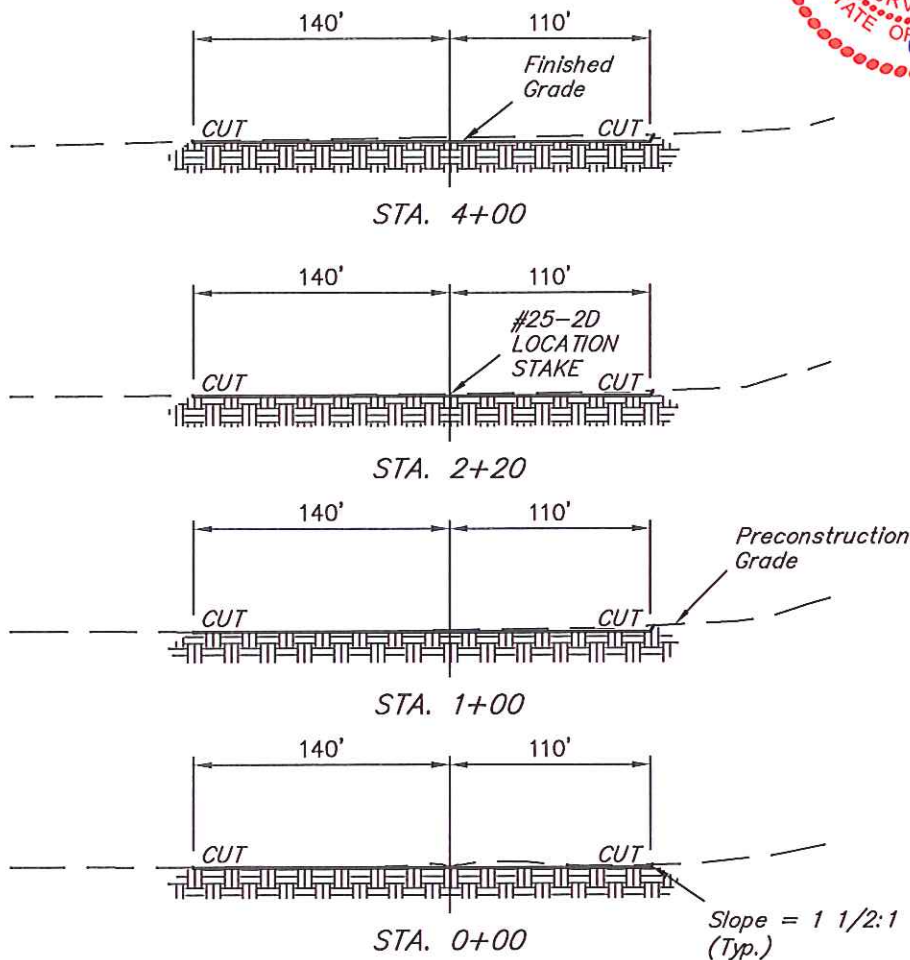


1" = 40'
X-Section
Scale
1" = 100'

DATE: 03-14-12
DRAWN BY: T.B.
REVISED: 03-23-12

GREAT WESTERN OIL & GAS COMPANY
CONSTRUCTION LAYOUT CROSS SECTIONS FOR
DETRERER FD #25-6D, #24-21D, #24-37D,
#25-7D, & #25-2D
SECTION 25, T6N, R67W, 6th P.M.
NW 1/4 NE 1/4

FIGURE #2



NOTE:

Topsoil should not be
Stripped Below Finished
Grade on Substructure Area.

APPROXIMATE ACREAGES
WELL SITE DISTURBANCE = ± 2.499 ACRES

* NOTE:
FILL QUANTITY INCLUDES
5% FOR COMPACTION

APPROXIMATE YARDAGES

(6") Topsoil Stripping = 1,880 Cu. Yds.
Remaining Location = 540 Cu. Yds.
TOTAL CUT = 2,420 CU. YDS.
FILL = 540 CU. YDS.

EXCESS MATERIAL = 1,880 Cu. Yds.
Topsoil = 1,880 Cu. Yds.
EXCESS UNBALANCE = 0 Cu. Yds.
(After Interim Rehabilitation)

UINTAH ENGINEERING & LAND SURVEYING
85 So. 200 East * Vernal, Utah 84078 * (435) 789-1017

GREAT WESTERN OIL & GAS COMPANY

TYPICAL RIG LAYOUT FOR

DETRER FD #25-6D, #24-21D, #24-37D

#25-7D, & #25-2D

SECTION 25, T6N, R67W, 6th P.M.

NW 1/4 NE 1/4

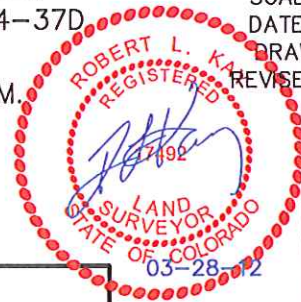
FIGURE #3

SCALE: 1" = 60'

DATE: 03-14-12

DRAWN BY: T.B.

REVISED: 03-23-12



SECTION 25
SECTION 24

