

LEGEND:

PROPOSED LOCATION

GREAT WESTERN OIL & GAS COMPANY

DETTERER FD #25-6D, #24-21D,
#24-37D, #25-7D & #25-2D
SECTION 25, T6N, R67W, 6th P.M.
NW 1/4 NE 1/4



Uintah Engineering & Land Surveying
85 South 200 East Vernal, Utah 84078
(435) 789-1017 * FAX (435) 789-1813

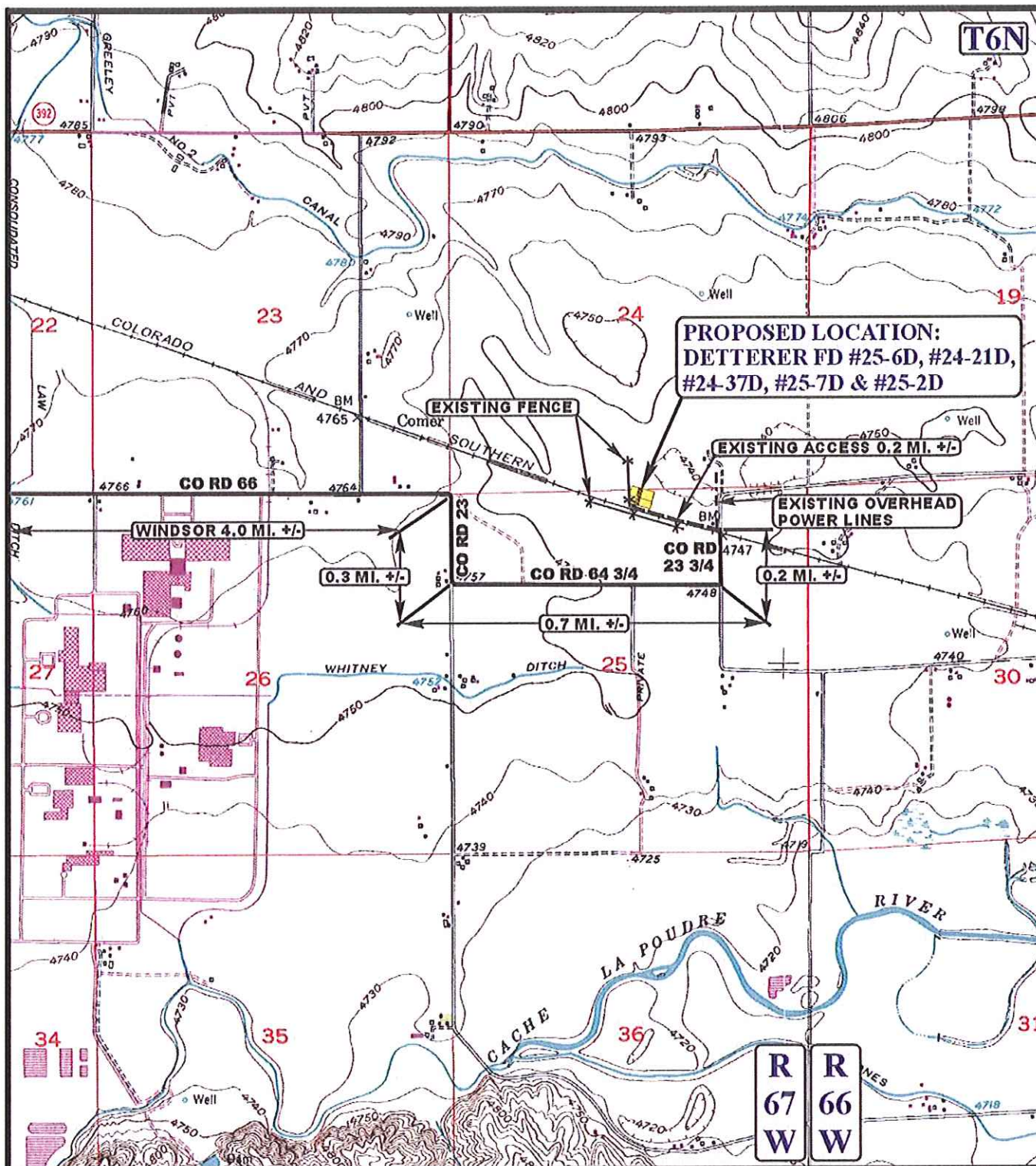


**ACCESS ROAD
MAP**

SCALE: 1:100,000 DRAWN BY: A.T. REVISED: 03-23-12

02 21 12
MONTH DAY YEAR





LEGEND:

- EXISTING ROAD
- PROPOSED ACCESS ROAD
- EXISTING FENCE

GREAT WESTERN OIL & GAS COMPANY

DETTERER FD #25-6D, #24-21D,
 #24-37D, #25-7D & #25-2D
 SECTION 25, T6N, R67W, 6th P.M.
 NW 1/4 NE 1/4



Uintah Engineering & Land Surveying
 85 South 200 East Vernal, Utah 84078
 (435) 789-1017 * FAX (435) 789-1813



ACCESS ROAD
MAP

02 **21** **12**
 MONTH DAY YEAR

B
TOPO

SCALE: 1" = 2000' DRAWN BY: A.T. REVISED: 03-23-12

GREAT WESTERN OIL & GAS COMPANY
DETERER FD #25-6D, #24-21D, #24-37D, #25-7D & #25-2D
SECTION 25, T6N, R67W, 6th P.M.

PROCEED IN AN EASTERLY DIRECTION FROM WINDSOR, COLORADO ALONG COUNTY ROAD 68 APPROXIMATELY 1.0 MILE TO THE JUNCTION OF THIS ROAD AND COUNTY ROAD 19 TO THE SOUTH; TURN RIGHT AND PROCEED IN A SOUTHERLY DIRECTION APPROXIMATELY 1.0 MILE TO THE JUNCTION OF THIS ROAD AND COUNTY ROAD 66 TO THE EAST; TURN LEFT AND PROCEED IN A EASTERLY DIRECTION APPROXIMATELY 2.0 MILES TO THE JUNCTION OF THIS ROAD AND COUNTY ROAD 23 TO THE SOUTH; TURN RIGHT AND PROCEED IN A SOUTHERLY DIRECTION APPROXIMATELY 0.3 MILES TO THE JUNCTION OF THIS ROAD AND COUNTY ROAD 64 3/4 TO THE EAST; TURN LEFT AND PROCEED IN A EASTERLY DIRECTION APPROXIMATELY 0.7 MILES TO THE JUNCTION OF THIS ROAD AND COUNTY ROAD 23 3/4 TO THE NORTH; TURN LEFT AND PROCEED IN A NORTHERLY DIRECTION APPROXIMATELY 0.2 MILES TO THE BEGINNING OF THE EXISTING ACCESS ROAD TO THE NORTHWEST; FOLLOW ROAD FLAGS IN A NORTHWESTERLY DIRECTION APPROXIMATELY 0.2 MILES TO THE PROPOSED LOCATION.

TOTAL DISTANCE FROM WINDSOR, COLORADO TO THE PROPOSED LOCATION IS APPROXIMATELY 5.4 MILES.