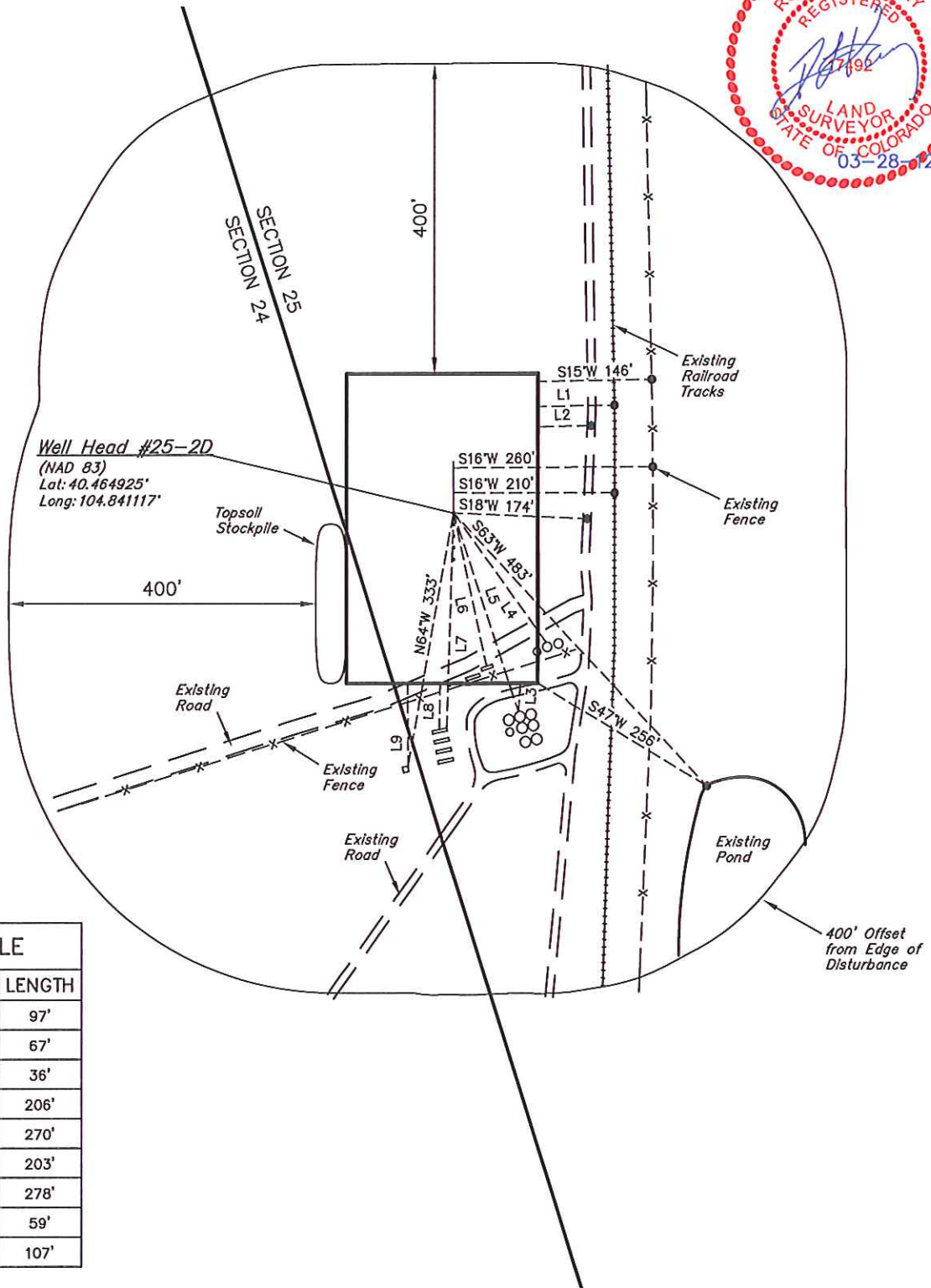


GREAT WESTERN OIL & GAS COMPANY

ADDENDUM TO LEGAL PLAT FOR

DETRER FD #25-6D, #24-21D, #24-37D,
#25-7D, & #25-2D
SECTION 25, T6N, R67W, 6th P.M.
NW 1/4 NE 1/4

SCALE: 1" = 200'
DATE: 03-14-12
DRAWN BY: T.B.
REVISED: 03-23-12



LINE TABLE

LINE	DIRECTION	LENGTH
L1	S15°W	97'
L2	S15°W	67'
L3	N70°W	36'
L4	S70°W	206'
L5	S88°W	270'
L6	N86°W	203'
L7	N72°W	278'
L8	S73°E	59'
L9	S74°E	107'