

**GREAT WESTERN OIL & GAS COMPANY**  
**DETERER FD #25-6D, #24-21D, #24-37D, #25-7D & #25-2D**  
 LOCATED IN WELD COUNTY, COLORADO  
 SECTION 25, T6N, R67W, 6th P.M.

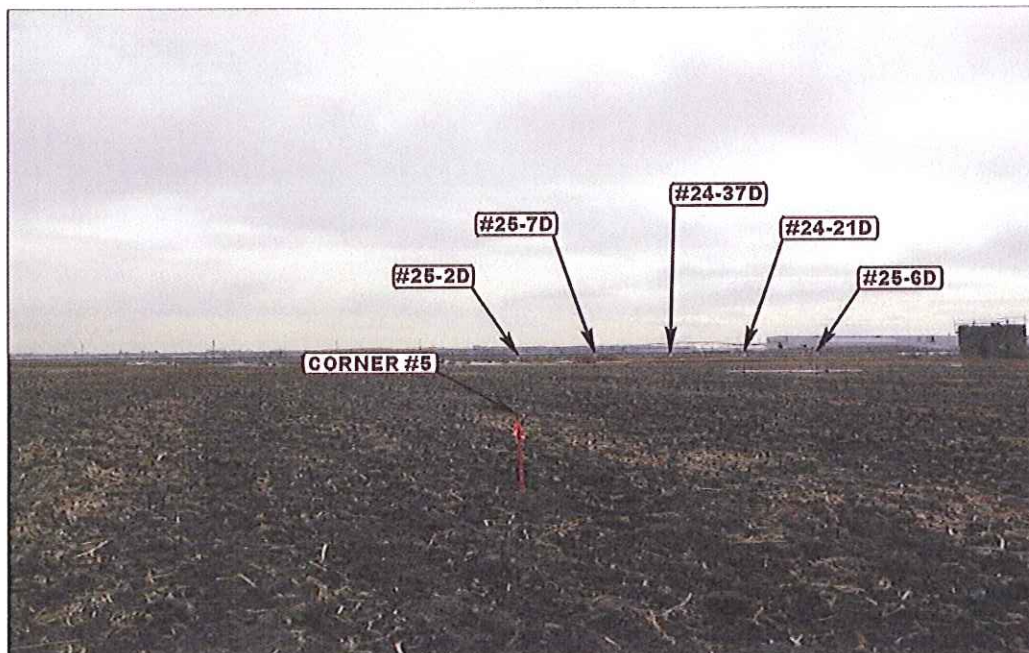


PHOTO: VIEW FROM CORNER #5 TO LOCATION STAKES

CAMERA ANGLE: SOUTHERLY



PHOTO: VIEW OF EXISTING ACCESS

CAMERA ANGLE: WESTERLY



Uintah Engineering & Land Surveying  
 85 South 200 East Vernal, Utah 84078  
 (435) 789-1017 \* FAX (435) 789-1813

**LOCATION PHOTOS**

TAKEN BY: D.N.

DRAWN BY: A.T.

<b>02</b>	<b>21</b>	<b>12</b>
MONTH	DAY	YEAR

REVISED: 03-23-12

PHOTO  
**P1**



**GREAT WESTERN OIL & GAS COMPANY**  
**DETERER FD #25-6D, #24-21D, #24-37D, #25-7D & #25-2D**  
 LOCATED IN WELD COUNTY, COLORADO  
 SECTION 25, T6N, R67W, 6th P.M.

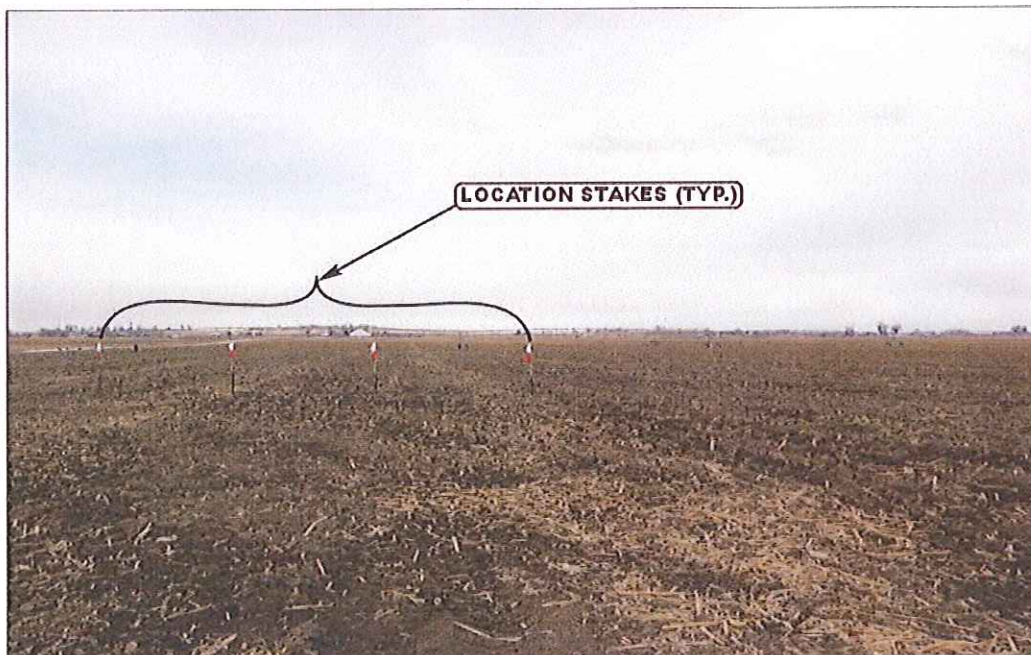


PHOTO: VIEW OF LOCATION STAKES

CAMERA ANGLE: NORTHERLY

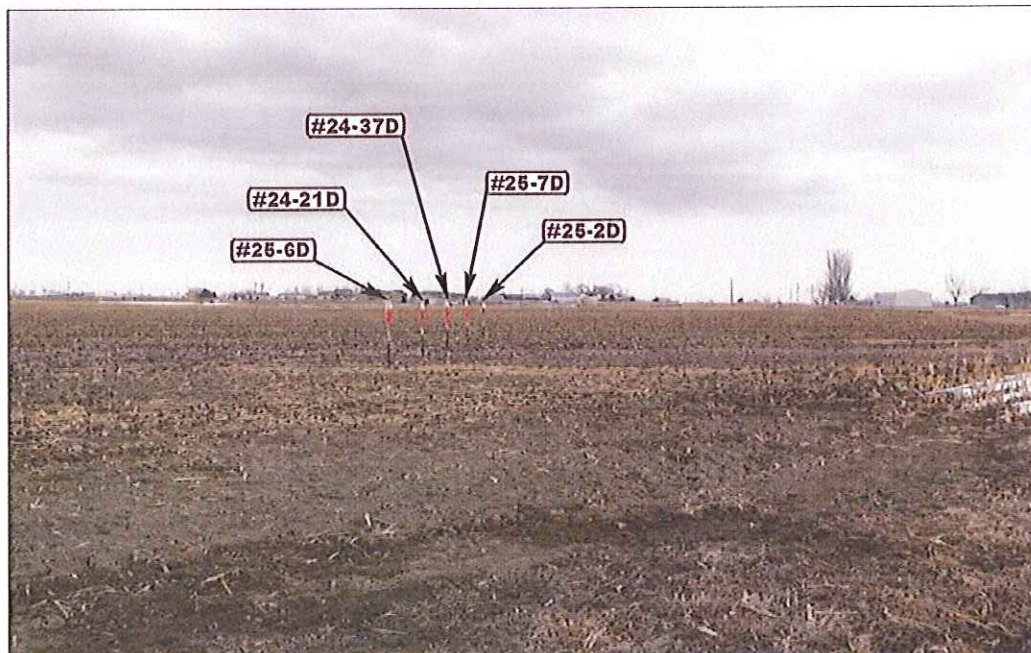


PHOTO: VIEW OF LOCATION STAKES

CAMERA ANGLE: EASTERLY



Uintah Engineering & Land Surveying  
 85 South 200 East Vernal, Utah 84078  
 (435) 789-1017 \* FAX (435) 789-1813

LOCATION PHOTOS

02 21 11  
 MONTH DAY YEAR

PHOTO  
 P2

TAKEN BY: D.N.

DRAWN BY: A.T.

REVISED: 03-23-12



**GREAT WESTERN OIL & GAS COMPANY**  
**DETERER FD #25-6D, #24-21D, #24-37D, #25-7D & #25-2D**  
 LOCATED IN WELD COUNTY, COLORADO  
 SECTION 25, T6N, R67W, 6th P.M.

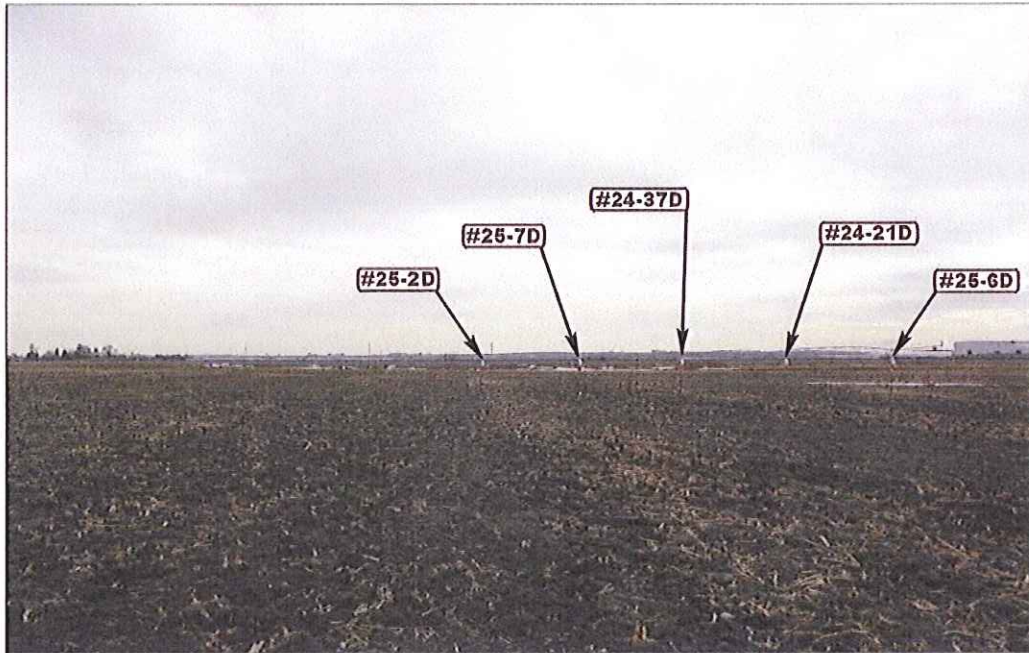


PHOTO: VIEW OF LOCATION STAKES

CAMERA ANGLE: SOUTHERLY

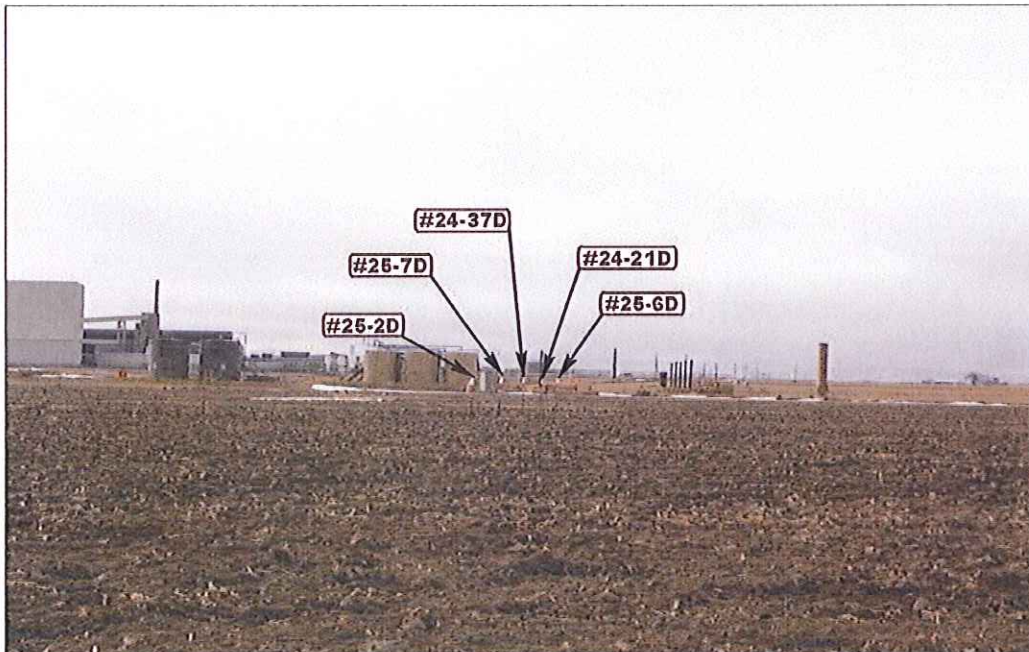


PHOTO: VIEW OF LOCATION STAKES

CAMERA ANGLE: WESTERLY



**UELS**

Uintah Engineering & Land Surveying  
 85 South 200 East Vernal, Utah 84078  
 (435) 789-1017 \* FAX (435) 789-1813

LOCATION PHOTOS

02 21 12  
 MONTH DAY YEAR

PHOTO

P3

TAKEN BY: D.N. DRAWN BY: A.T. REVISED: 03-23-12