

T6N, R67W, 6th P.M.

2002 Alum. Cap
1.2' Below Ground,
LS #30462
Lat: 40.465367°
Long: 104.837208°

R 67
R 66

GREAT WESTERN OIL & GAS COMPANY

Well location, DETTERER FD #25-7D, located as shown in the NW 1/4 NE 1/4 of Section 25, T6N, R67W, 6th P.M., Weld County, Colorado.

BASIS OF ELEVATION

USGS COOPERATIVE BASE NETWORK CONTROL STATION, DESIGNATION 'VERMILYEA', NGS DATA SHEET LISTS THE NAVD 88 ELEVATION AS BEING 5026 FEET

LEGEND:

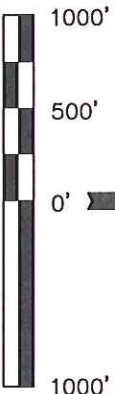
└ = 90° SYMBOL

● = PROPOSED WELL HEAD.

▲ = SECTION CORNERS LOCATED.

△ = SECTION CORNERS RE-ESTABLISHED.
(Not Set on Ground.)

NOTE:
SEE ADDENDUM TO LEGAL PLAT FOR
EXISTING IMPROVEMENTS WITHIN 400'
OF THE PROPOSED WELL DISTURBANCE.



CERTIFICATE

THIS IS TO CERTIFY THAT THE ABOVE PLAT WAS PREPARED FROM
FIELD NOTES OF ACTUAL SURVEYS MADE BY ME OR UNDER MY
SUPERVISION AND THAT THE SAME ARE TRUE AND CORRECT TO THE
BEST OF MY KNOWLEDGE AND BELIEF.

REGISTERED LAND SURVEYOR
REGISTRATION NO. 17242
STATE OF COLORADO 08-28-12

UNTAH ENGINEERING & LAND SURVEYING

86 SOUTH 200 EAST - VERNAL, UTAH 84078

(435) 789-1017

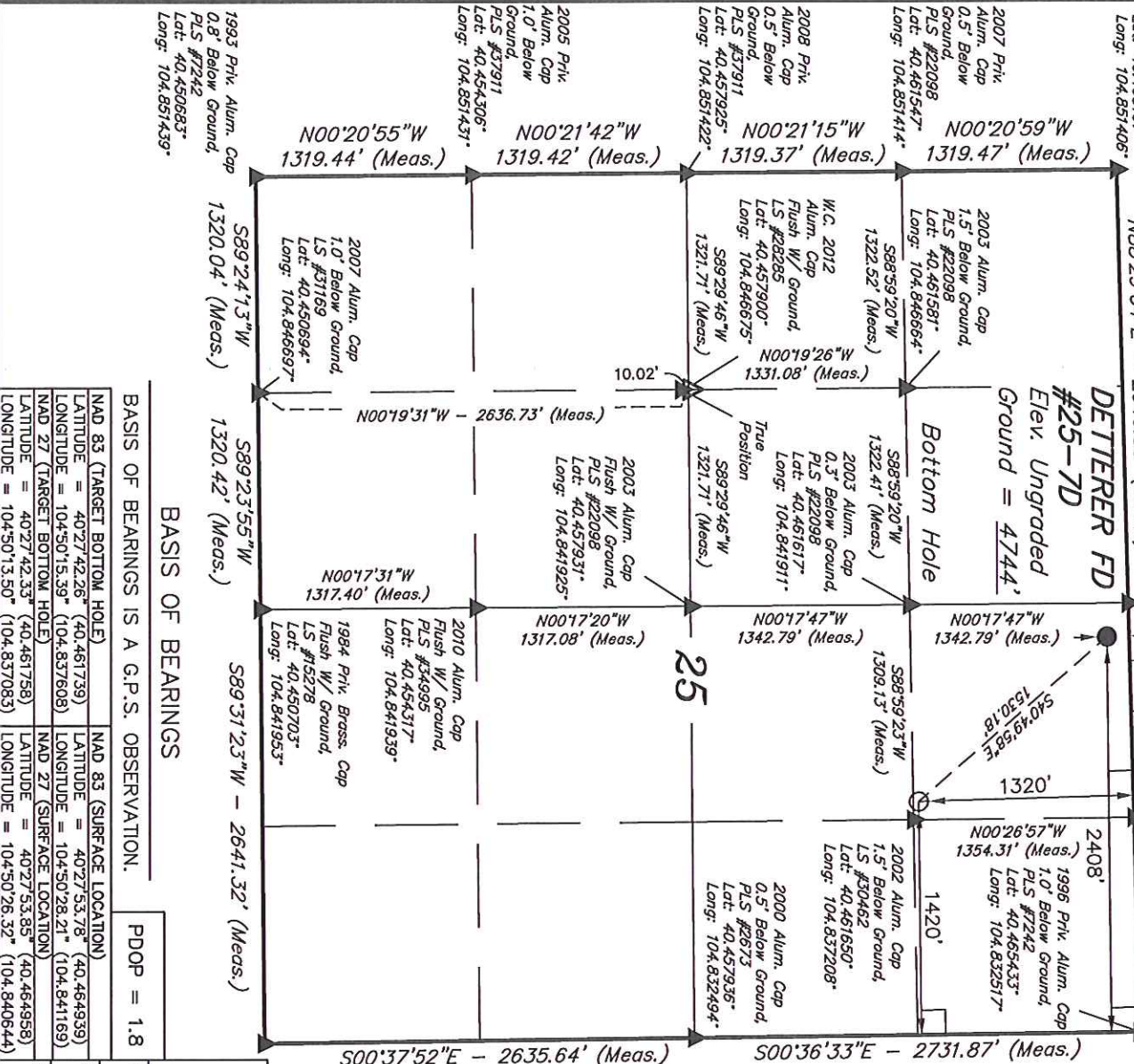
SCALE
1" = 1000'

DATE SURVEYED: 02-17-12 DATE DRAWN: 03-13-12

PARTY D.N. G.W. T.B. REFERENCES G.L.O. PLAT

WEATHER COLD

FILE GREAT WESTERN OIL & GAS COMPANY



BASIS OF BEARINGS

BASIS OF BEARINGS IS A G.P.S. OBSERVATION.

PDOP = 1.8

NAD 83 (TARGET BOTTOM HOLE)	NAD 83 (SURFACE LOCATION)
LATITUDE = 40°27'42.26" (40.461739)	LATITUDE = 40°27'53.78" (40.464939)
LONGITUDE = 104°50'15.39" (104.837608)	LONGITUDE = 104°50'28.21" (104.841169)
NAD 27 (TARGET BOTTOM HOLE)	NAD 27 (SURFACE LOCATION)
LATITUDE = 40°27'42.33" (40.461758)	LATITUDE = 40°27'53.85" (40.464958)
LONGITUDE = 104°50'13.50" (104.837083)	LONGITUDE = 104°50'26.32" (104.840644)