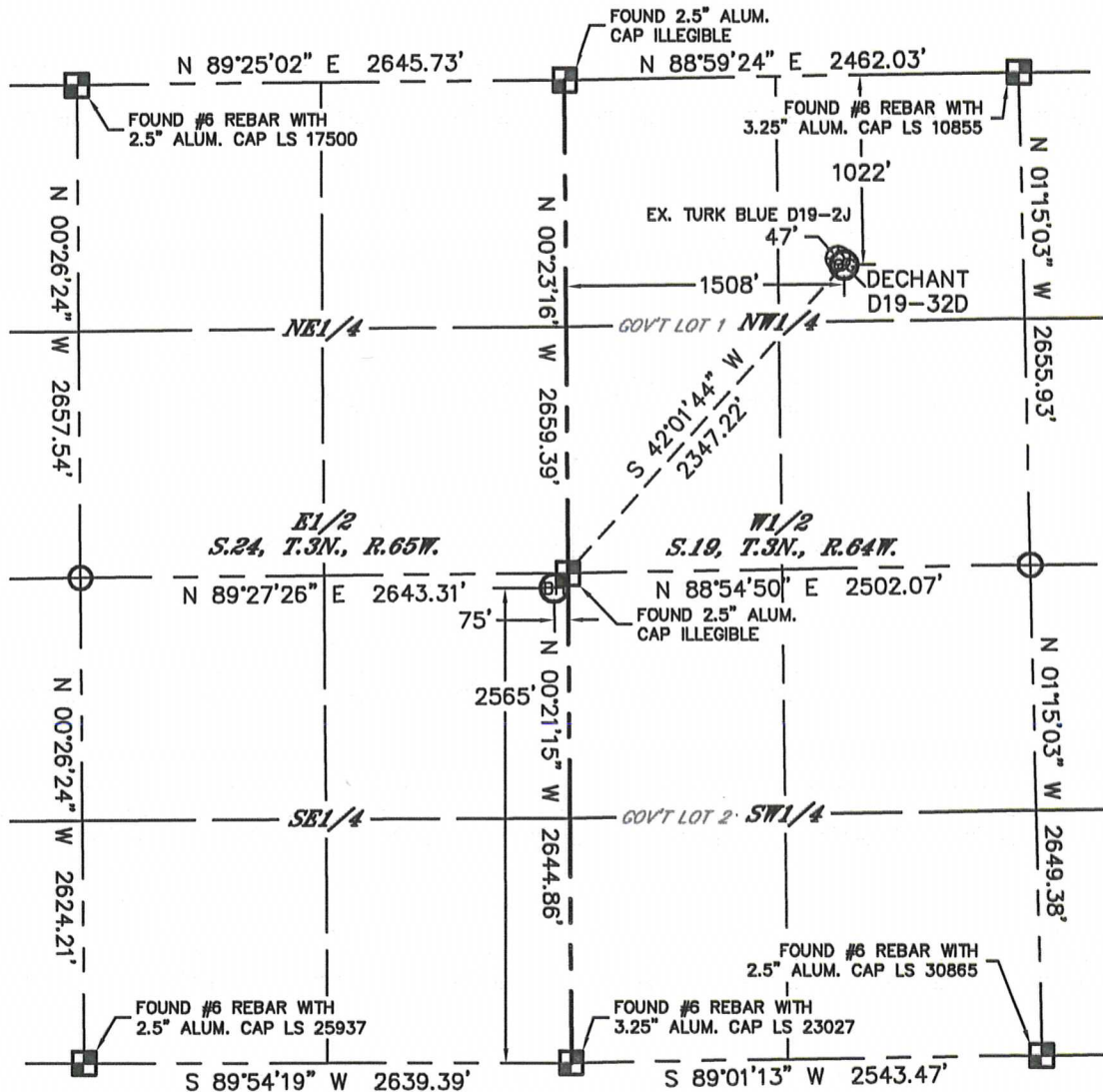


WELL LOCATION CERTIFICATE

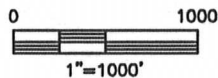
THIS MAP DOES NOT REPRESENT A BOUNDARY SURVEY

SECTION: 19
TOWNSHIP: 3N
RANGE: 64W



In accordance with a request from Mike Rodline with Noble Energy Inc. Lat40°, Inc. has determined the surface location of the DECHANT D19-32D to be 1022' from the NORTH line and 1508' from the WEST line as measured at right angles from the section lines of Section 19, Township 3 North, Range 64 West and the bottom hole to be 2565' from the SOUTH line and 75' from the EAST line as measured at right angles from the section lines of Section 24, Township 3 North, Range 65 West of the Sixth Principal Meridian, County of Weld, State of Colorado.

I hereby state that this Well Location Certificate was prepared by me, or under my direct supervision, that the fieldwork was completed on 1/13/2012, for and on behalf of Noble Energy Inc. That this is not a Land Survey Plat or an Improvement Survey Plat, and that it is not to be relied upon for establishment of fence, building, or other future improvement lines.



NOTE:

- 1) Bearings shown are Grid Bearings of the Colorado State Plane Coordinate System, North Zone, North American Datum 1983/2007. The lineal dimensions as contained herein are based upon the "U.S. Survey Foot."
- 2) Ground elevations are based on an observed GPS elevation (NAVD 1988 DATUM).
- 3) NEAREST EXISTING WELL: TURK BLUE D19-2J, 47'
- 4) IMPROVEMENTS: See LOCATION DRAWING for all visible improvements within 400' of disturbed area.
- 5) SURFACE USE: EX. WELL PAD / RANGELAND
- 6) INSTRUMENT OPERATOR: ADAM KELLY

NOTE

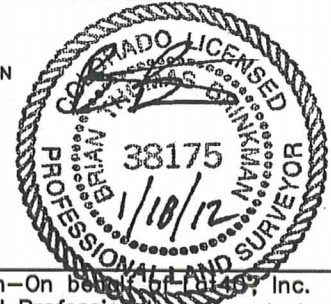
According to Colorado law, you must commence any legal action based upon any defect in this W.L.C. within three years after you discover such defect. In no event, may any action based upon any defect in this survey be commenced more than ten years after the date of the certificate shown hereon. (13-80-105 C.R.S.)

LEGEND

- = ALIQUOT MONUMENT AS DESCRIBED
- = CALCULATED POSITION

SURFACE LOCATION
LATITUDE: 40.21517N
LONGITUDE: 104.59728W
PDOP: 1.7
ELEV: 4789'
1/4,1/4: NE1/4NW1/4
NEAREST PROPERTY LINE: 1022' N

BOTTOM HOLE
LATITUDE: 40.21043N
LONGITUDE: 104.60297W

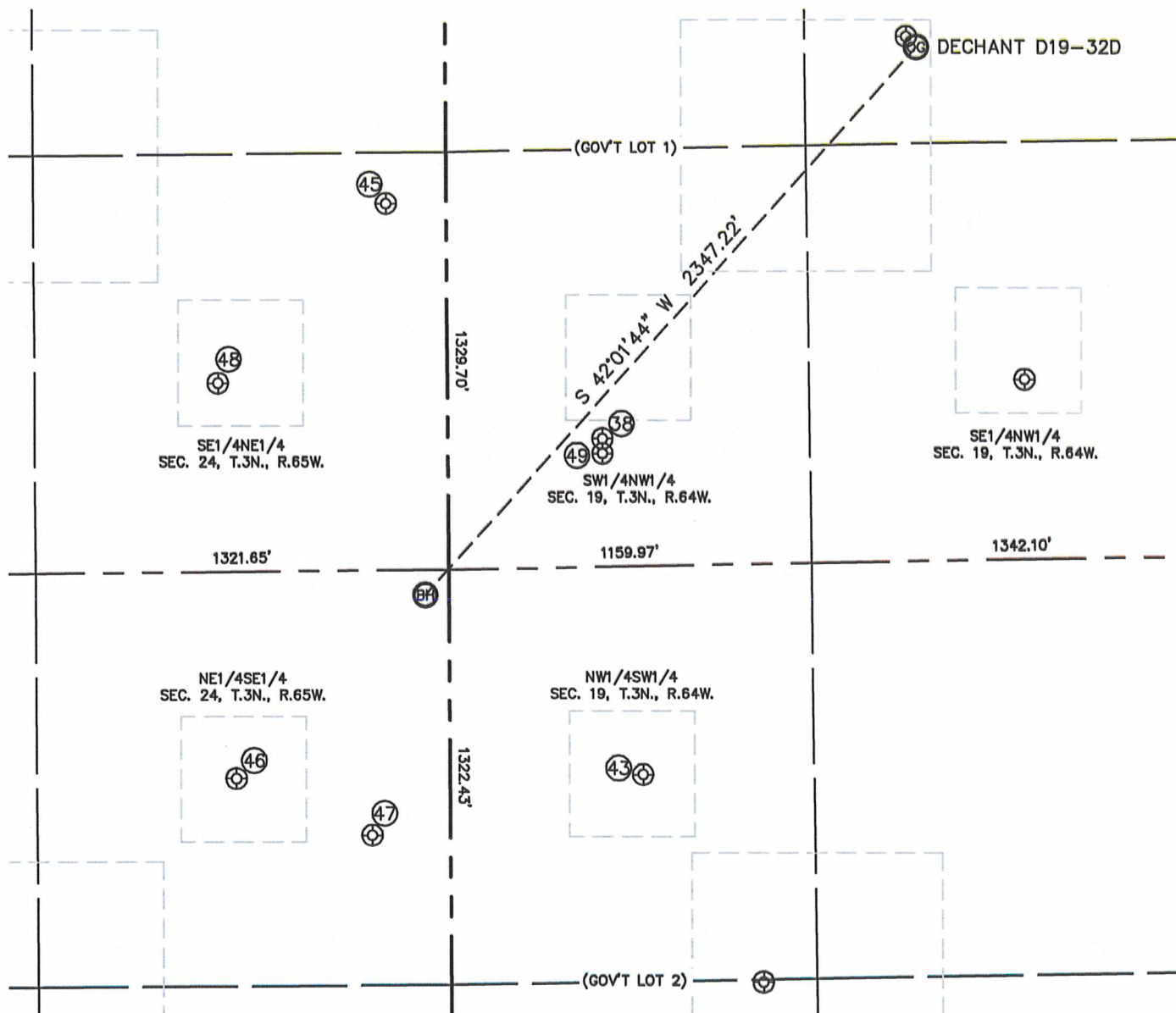


Brian T. Brinkman—On behalf of Lat40°, Inc.
Colorado Licensed Professional Land Surveyor No. 38175
DATE: 1/18/2012
PROJECT#: 2010139

SITE SKETCH

DECHANT D19-32D

SECTION: 19
TOWNSHIP: 3N
RANGE: 64W



38
TURK BLUE D19-5
SW1/4NW1/4
2249' FNL
495' FWL
LAT-40.21179°N
LONG-104.60092°W
PDOP: 1.2
ELEV: 4789'

43
BUTTERBALL 13-19
NW1/4SW1/4
1983' FSL
618' FWL
LAT-40.20885°N
LONG-104.60050°W
PDOP: 2.7
ELEV: 4784'

45
NOPENS D19-31
SE1/4NE1/4
1491' FNL
193' FEL
LAT-40.21388°N
LONG-104.60338°W
PDOP: 3.9
ELEV: 4804'

46
GURTLE 24-9J
NE1/4SE1/4
1982' FSL
683' FEL
LAT-40.20885°N
LONG-104.60515°W
PDOP: 4.3
ELEV: 4792'

47
GURTLE H24-99HZ
NE1/4SE1/4
1801' FSL
250' FEL
LAT-40.20834°N
LONG-104.60361°W
PDOP: 2.0
ELEV: 4789'

48
NOPENS H24-08
SE1/4NE1/4
2057' FNL
734' FEL
LAT-40.21230°N
LONG-104.60532°W
PDOP: 2.6
ELEV: 4803'

49
BUTTERBALL D19-20D
SW1/4NW1/4
2297' FNL
495' FWL
LAT-40.21166°N
LONG-104.60092°W
PDOP: 3.6
ELEV: 4789'

