

Downhole Schematic for COSSLETT 6-0-22



Project : DJ Basin

API # : 05123327040000

Surface Location : SENE Sec 22 T1N - R68W 6th PM

Area : Wattenberg

County :

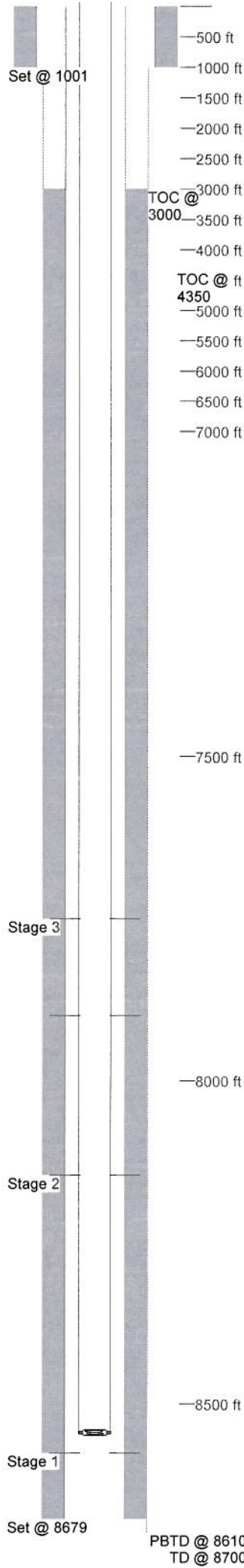
BHL :

As Of : 04/07/2012

GL : 5185.0 ft

KB to GL : ft

KB : 0.0 ft



Casing Details								
Section	Hole	Casing	Mass	Set At	Length	Thread	Grade	Description
Surface	12.250	8.875	0	1,001	1	LT&C	J-55	Guide shoe
		8.875	0	1,000	985	LT&C	J-55	Casing
			0	15	1	LT&C		Wellhead
Production	7.875	4.5	0	8,679	1	LT&C	I-80	Float shoe
		4.5	11.6	8,678	37	LT&C	I-80	Casing
		4.5	0	8,640	1	LT&C	N80	Float Collar
		4.5	11.6	8,639	735	LT&C	I-80	Casing
		4.5	11.6	7,904	17	LT&C	I-80	Casing-Marker jt
		4.5	11.6	7,887	7,873	LT&C	I-80	Casing

Cement Details				
Section	Sequence	Top	Density	Blend / Additives
Surface	Tail	0	14.5	Type III / .08 lb/sk static free, .15 lb/ sk cello flake, 1.5% cACL2
Production	Fill	0	14.5	Type III / 2% Cacl2
	Lead	3,000	12.5	Premium Lite / 6% Gel + .7% FL52 + .2% CD32 + .2 ASA 301+ 3#/sk CSE2
	Tail	7,000	13.5	50:50 / 3% Gel + .6% FL32 + .1% SMS + 20% CF

Tubing and Downhole Equipment			
O.D.	Length	Depth	Description
0.000	13.00	13.00	KB
2.375	8,526.66	8,539.66	260 JTS 4.7# J55 EUE 8RD
2.375	1.90	8,541.56	

Perforations									
Stage	Date	From	To	Shots	Stage	Date	From	To	Shots
1	12/20/2011	8,576	8,596	40	3	12/20/2011	8,146	8,166	40
2	12/20/2011				3	12/20/2011	7,899	7,917	72
							7,750	7,756	24

Frac Summary
 Stage 1 : 8,576 - 8,596, 40 - 0.420" shots, 3854 bbls of Hybrid pHaserFrac, 250060 lbs of 20/40 Sand Report Date: 12/20/2011
 Stage 2 : 8,146 - 8,166, 40 - 0.420" shots, 4962 bbls of FR Water, 154000 lbs of 20/40 Sand Report Date: 12/21/2011
 Stage 3 : 7,750 - 7,917, 96 - 0.420" shots, 5393 bbls of FR Water, 161000 lbs of 30/50 Sand Report Date: 12/22/2011