
WILLIAMS PRODUCTION RMT INC - EBUS

**GM 433-22
GRAND VALLEY
Garfield County , Colorado**

Cement Surface Casing
10-Jun-2011

Post Job Report

The Road to Excellence Starts with Safety

Sold To #: 300721	Ship To #: 2853369	Quote #:	Sales Order #: 8186394
Customer: WILLIAMS PRODUCTION RMT INC - EBUS		Customer Rep: Moore, Frank	
Well Name: GM		Well #: 433-22	API/UWI #:
Field: GRAND VALLEY	City (SAP):	County/Parish: Garfield	State: Colorado
Contractor: NABORS 576		Rig/Platform Name/Num: NABORS 576	
Job Purpose: Cement Surface Casing			
Well Type: Development Well		Job Type: Cement Surface Casing	
Sales Person: KOHL, KYLE		Srvc Supervisor: TRIPLETT, MICHEAL	MBU ID Emp #: 447908

Job Personnel

HES Emp Name	Exp Hrs	Emp #	HES Emp Name	Exp Hrs	Emp #	HES Emp Name	Exp Hrs	Emp #
SINGLETON, AUSTIN W	6.5	487406	STILLSON, ERIC W	6.5	393789	TRIPLETT, MICHEAL Anthony	6.5	447908
WEAVER, CARLTON Russell	6.5	457698						

Equipment

HES Unit #	Distance-1 way	HES Unit #	Distance-1 way	HES Unit #	Distance-1 way	HES Unit #	Distance-1 way
10567589C	60 mile	10951246	60 mile	10995027	60 mile	11021972	60 mile
11027039	60 mile						

Job Hours

Date	On Location Hours	Operating Hours	Date	On Location Hours	Operating Hours	Date	On Location Hours	Operating Hours
06/10/2011	6.5	1						
TOTAL			<i>Total is the sum of each column separately</i>					

Job

Job Times

Formation Name	Top	Bottom	Called Out	Date	Time	Time Zone
Formation Depth (MD)			On Location	10 - Jun - 2011	05:30	MST
Form Type		BHST	Job Started	10 - Jun - 2011	08:30	MST
Job depth MD	1355. ft	Job Depth TVD	1355. ft	Job Completed	10 - Jun - 2011	00:00
Water Depth		Wk Ht Above Floor	4. ft	Departed Loc	10 - Jun - 2011	00:00
Perforation Depth (MD)	<i>From</i>	<i>To</i>				

Well Data

Description	New / Used	Max pressure psig	Size in	ID in	Weight lbf/ft	Thread	Grade	Top MD ft	Bottom MD ft	Top TVD ft	Bottom TVD ft
Sales/Rental/3rd Party (HES)											

Description	Qty	Qty uom	Depth	Supplier
PLUG,CMTG, TOP, 9 5/8, HWE, 8.16 MIN/9.06 MA	1	EA		
R/A DENSOMETER W/CHART RECORDER, /JOB, ZI	1	JOB		
ADC (AUTO DENSITY CTRL) SYS, /JOB, ZI	1	JOB		
PORT. DAS W/CEMWIN; ACQUIRE W/HES, ZI	1	JOB		

Tools and Accessories

Type	Size	Qty	Make	Depth	Type	Size	Qty	Make	Depth	Type	Size	Qty	Make
Guide Shoe					Packer					Top Plug			
Float Shoe					Bridge Plug					Bottom Plug			
Float Collar					Retainer					SSR plug set			
Insert Float										Plug Container			
Stage Tool										Centralizers			

Miscellaneous Materials

Gelling Agt	Conc	Surfactant	Conc	Acid Type	Qty	Conc %
Treatment Fld	Conc	Inhibitor	Conc	Sand Type	Size	Qty

Fluid Data

Stage/Plug #: 1

Fluid #	Stage Type	Fluid Name	Qty	Qty uom	Mixing Density lbm/gal	Yield ft ³ /sk	Mix Fluid Gal/sk	Rate bbl/min	Total Mix Fluid Gal/sk
1	Spacer		20.00	bbl	8.34	.0	.0	.0	
2	Lead Cement	VERSACEM (TM) SYSTEM (452010)	180.0	sacks	12.3	2.37	13.73		13.73
	13.732 Gal	FRESH WATER							
3	Tail Cement	VERSACEM (TM) SYSTEM (452010)	160.0	sacks	12.8	2.11	11.75		11.75
	11.746 Gal	FRESH WATER							
4	Displacement Fluid		102.00	bbl	8.34	.0	.0	.0	
Calculated Values		Pressures		Volumes					
Displacement	101.9	Shut In: Instant		Lost Returns	0	Cement Slurry	136	Pad	
Top Of Cement	SURFACE	5 Min		Cement Returns	35	Actual Displacement		Treatment	
Frac Gradient		15 Min		Spacers	20	Load and Breakdown		Total Job	258
Rates									
Circulating	12	Mixing	8	Displacement	10	Avg. Job	10		
Cement Left In Pipe	Amount	44.21 ft	Reason	Shoe Joint					
Frac Ring # 1 @	ID	Frac ring # 2 @	ID	Frac Ring # 3 @	ID	Frac Ring # 4 @	ID		
The Information Stated Herein Is Correct				Customer Representative Signature					

The Road to Excellence Starts with Safety

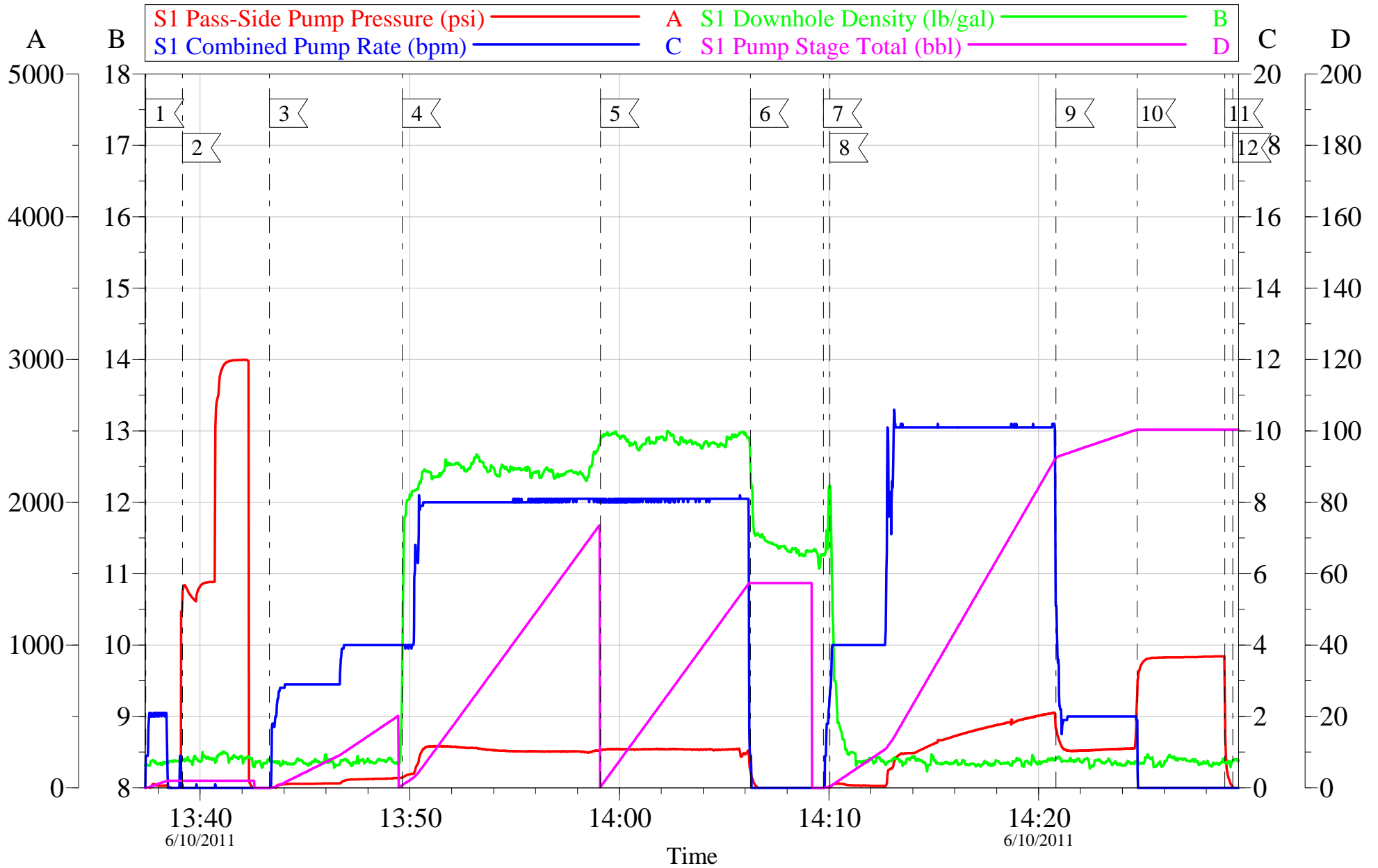
Sold To #: 300721	Ship To #: 2853369	Quote #:	Sales Order #: 8186394
Customer: WILLIAMS PRODUCTION RMT INC - EBUS		Customer Rep: Moore, Frank	
Well Name: GM		Well #: 433-22	API/UWI #:
Field: GRAND VALLEY	City (SAP):	County/Parish: Garfield	State: Colorado
Legal Description:			
Lat:		Long:	
Contractor: NABORS 576		Rig/Platform Name/Num: NABORS 576	
Job Purpose: Cement Surface Casing			Ticket Amount:
Well Type: Development Well		Job Type: Cement Surface Casing	
Sales Person: KOHL, KYLE		Srvc Supervisor: TRIPLETT, MICHEAL	MBU ID Emp #: 447908

Activity Description	Date/Time	Cht #	Rate bbl/min	Volume bbl		Pressure psig		Comments
				Stage	Total	Tubing	Casing	
Call Out	06/10/2011 05:30							
Pre-Convoy Safety Meeting	06/10/2011 07:30							
Crew Leave Yard	06/10/2011 07:40							
Arrive At Loc	06/10/2011 08:30							VERIFY NUMBERS AND CEMENT WITH COMPANY REP
Assessment Of Location Safety Meeting	06/10/2011 08:45							
Other	06/10/2011 12:15							SPOT EQUIPMENT, 1 RCM PUMP TRUCK, 1 660
Pre-Rig Up Safety Meeting	06/10/2011 12:30							GO OVER JSA AND HAVE CREW SIGN
Rig-Up Equipment	06/10/2011 12:35							
Pre-Job Safety Meeting	06/10/2011 13:15							GO OVER SAFETY INFO AND JOB PROCEDURES
Start Job	06/10/2011 13:37							TD:1355', TP:1340', SJ:44.21', MW:10.0 PPG, CASING: 9.625 32.3#, OH: 13.50"
Test Lines	06/10/2011 13:39						3000	PRESSURE TEST PUMPS AND LINES, STARTED AT 2900PSI ENDED AT 2912 PSI LOST 0 PSI IN TWO MINUTES
Pump Spacer 1	06/10/2011 13:43		4	20			80.0	FRESH WATER
Pump Lead Cement	06/10/2011 13:49		8	76			282.0	180 SACKS MIXED @ 12.3, 2.37 YIELD, 13.73 GAL/SACK

Activity Description	Date/Time	Cht #	Rate bbl/min	Volume bbl		Pressure psig		Comments
				Stage	Total	Tubing	Casing	
Pump Tail Cement	06/10/2011 13:59		8	60.1			285.0	160 SACKS MIXED @ 12.8, 2.11 YIELD, 11.75 GAL/SACK
Shutdown	06/10/2011 14:06							
Drop Top Plug	06/10/2011 14:09							
Pump Displacement	06/10/2011 14:10			102			510.0	FRESHWATER, WASHED UP ON TOP OF PLUG PER COMPANY REP.
Slow Rate	06/10/2011 14:20			92			285.0	SLOWRATE LAST 10BBLS PRIOR TO BUMPING PLUG
Bump Plug	06/10/2011 14:24						300.0	BUMP PLUG AND WENT 500PSI OVER TO 800PSI
Check Floats	06/10/2011 14:28							FLOATS HELD
End Job	06/10/2011 14:29							GOOD CIRCULATION THROUGHOUT JOB. GOT CEMENT BACK WITH 65 BBLS OF DISPLACEMENT AWAY. GOT 35 BBLS OF CEMENT BACK TO SURFACE. USED 100'S OF SUGAR, NO IRON TRAILER OR BOOSTER PUMP USED.
Post-Job Safety Meeting (Pre Rig-Down)	06/10/2011 14:30							
Rig-Down Equipment	06/10/2011 14:40							
Pre-Convoy Safety Meeting	06/10/2011 15:00							
Crew Leave Location	06/10/2011 15:15							THANKS FOR USING HALLIBURTON MIKE TRIPLETT AND CREW

EVENT #	EVENT	VOLUME	SACKS	WEIGHT	YIELD	GAL/ SK
1	Start Job		1616 <u>Max Psi</u>			
6	Test Lines	3000.0				
9	FRESH WATER	20.0				
13	Lead Cement	76.0	180	12.3	2.37	13.73
15	Tail Cement	60.1	160	12.8	2.11	11.75
22	Drop Plug					
23	KCL DISPLACEMENT	102.0				
	SLOW RATE	92.0				
26	Land Plug	283+500				
2	Release Psi / Job Over					
			Do Not Overdisplace			
DISPLACEMENT	TOTAL PIPE	SHOE JOINT LENGTH	FLOAT COLLAR	BBL/FT	H2O REQ.	
101.98	1340	44.21	1295.79	0.0787	236	
PSI to Lift Pipe	503	*****Use Mud Scales on Each Tier*****				
Total Displacement	101.98					
CALCULATED DIFFERENTIAL PSI		283	TOTAL FLUID PUMPED		258	
Collapse	2020	Burst	3220	SO#	8186394	

WILLIAMS SURFACE GM 433-22



Customer: WILLIAMS	Job Date: 10-Jun-2011	Sales Order #: 8186394	
Well Description: GM 433-22	JOB TYPE: SURFACE	COMPANY REP: FRANK MOORE	
ADC USED: YES	SERVICE SUPERVISOR: MIKE TRIPLETT	ELITE/OPERATER 3/ RUSTY WEAVER	

HALLIBURTON

Water Analysis Report

Company: WILLIAMS

Date: 12/21/2010

Submitted by: MIKE TRIPLETT

Date Rec.: 6/10/2011

Attention: JON TROUT

S.O.# 8186394

Lease GM

Job Type: SURFACE

Well # 433-22

Specific Gravity	<i>MAX</i>	1
pH	<i>8</i>	7
Potassium (K)	<i>5000</i>	450 Mg / L
Calcium (Ca)	<i>500</i>	120 Mg / L
Iron (FE2)	<i>300</i>	0 Mg / L
Chlorides (Cl)	<i>3000</i>	500 Mg / L
Sulfates (SO ₄)	<i>1500</i>	-200 Mg / L
Chlorine (Cl ₂)		0 Mg / L
Temp	<i>40-80</i>	65 Deg
Total Dissolved Solids		35 Mg / L

Respectfully: MIKE TRIPLETT

Title: CEMENTING SUPERVISOR

Location: Grand Junction, CO

NOTICE:

This report is limited to the described sample tested. Any person using or relying on this report agrees that Halliburton shall not be liable for any loss or damage whether due to act or omission resulting from such report c

Sales Order #: 8186394	Line Item: 10	Survey Conducted Date: 6/10/2011
Customer: WILLIAMS PRODUCTION RMT INC - EBUS		Job Type (BOM): CMT SURFACE CASING BOM
Customer Representative: FRANK MOORE		API / UWI: (leave blank if unknown) AFEYKNQITXJQXSSCAAA
Well Name: GM		Well Number: 433-22
Well Type: Development Well	Well Country: United States of America	
H2S Present:	Well State: Colorado	Well County: Garfield

Dear Customer,

We hope that you were satisfied with the service quality of this job performed by Halliburton. It is the aim of our management and service personnel to deliver equipment and service of a standard unmatched in the service sector of the energy industry.

Please take the time to let us know if our performance met with your satisfaction. Please be as critical as possible to ensure we constantly improve our service. Your comments are of great value to us and are intended for the exclusive use of Halliburton.

CUSTOMER SATISFACTION SURVEY

CATEGORY	CUSTOMER SATISFACTION RESPONSE	
Survey Conducted Date	The date the survey was conducted	6/10/2011
Survey Interviewer	The survey interviewer is the person who initiated the survey.	MICHEAL TRIPLETT (HB15721)
Customer Participation	Did the customer participate in this survey? (Y/N)	Yes
Customer Representative	Enter the Customer representative name	FRANK MOORE
HSE	Was our HSE performance satisfactory? Circle Y or N	Yes
Equipment	Were you satisfied with our Equipment? Circle Y or N	Yes
Personnel	Were you satisfied with our people? Circle Y or N	Yes
Customer Comment	Customer's Comment	
Job DVA	Did we provide job DVA above our normal service today? Circle Y or N	No
Time	Please enter hours in decimal format to nearest quarter hour.	
Other	Enter short text for other efficiencies gained.	
Customer Initials	Customer's Initials	
Please provide details	Please describe how the job efficiencies were gained.	

CUSTOMER SIGNATURE

Sales Order #: 8186394	Line Item: 10	Survey Conducted Date: 6/10/2011
Customer: WILLIAMS PRODUCTION RMT INC - EBUS		Job Type (BOM): CMT SURFACE CASING BOM
Customer Representative: FRANK MOORE		API / UWI: (leave blank if unknown) AFEYKNQITXJQXSSCAA
Well Name: GM		Well Number: 433-22
Well Type: Development Well	Well Country: United States of America	
H2S Present:	Well State: Colorado	Well County: Garfield

KEY PERFORMANCE INDICATORS

General	
Survey Conducted Date	6/10/2011
The date the survey was conducted	

Cementing KPI Survey	
Type of Job	0
Select the type of job. (Cementing or Non-Cementing)	
Select the Maximum Deviation range for this Job	Vertical
What is the highest deviation for the job you just completed? This may not be the maximum well deviation.	
Total Operating Time (hours)	2
Total Operating Hours Including Rig-up, Pumping, Rig-down. Enter in decimal format.	
HSE Incident, Accident, Injury	No
HSE Incident, Accident, Injury. This should be recordable incidents only.	
Was the job purpose achieved?	Yes
Was the job delivered correctly as per customer agreed design?	
Operating Hours (Pumping Hours)	1
Total number of hours pumping fluid on this job. Enter in decimal format.	
Customer Non-Productive Rig Time (hrs)	0
Lost time due to Halliburton in the start, execution, or completion of an ordered service or product, or delays in a follow-on service. Enter in decimal format. 0 if none.	
Type of Rig Classification Job Was Performed	Drilling Rig (Portable)
Type Of Rig (classification) Job Was Performed On	
Number Of JSAs Performed	7
Number Of Jsas Performed	
Number of Unplanned Shutdowns	0
Unplanned shutdown is when injection stops for any period of time.	
Was this a Primary Cement Job (Yes / No)	Yes

Sales Order #: 8186394	Line Item: 10	Survey Conducted Date: 6/10/2011
Customer: WILLIAMS PRODUCTION RMT INC - EBUS		Job Type (BOM): CMT SURFACE CASING BOM
Customer Representative: FRANK MOORE		API / UWI: (leave blank if unknown) AFEYKNQITXJQXSSCAA
Well Name: GM		Well Number: 433-22
Well Type: Development Well	Well Country: United States of America	
H2S Present:	Well State: Colorado	Well County: Garfield

Primary Cement Job= Casing job, Liner job, or Tie-back job.	
Did We Run Wiper Plugs? Did We Run Top And Bottom Casing Wiper Plugs?	Top
Mixing Density of Job Stayed in Designed Density Range (0-100%) Density Range defined as +/- .20 ppg. Calculation: Total BBLs cement mixed at designed density divided by total BBLs of cement multiplied by 100	95
Was Automated Density Control Used? Was Automated Density Control (ADC) Used ?	Yes
Pump Rate (percent) of Job Stayed At Designed Pump Rate Pump Rate range defined as +/- 1bbl/min. Calculation: Total BBLs of fluid pumped at the designed rate divided by Total BBLs of fluid pumped, multiplied by 100	95
Nbr of Remedial Sqz Jobs Rqd - Competition Number Of Remedial Squeeze Jobs Required After Primary Job Performed By Competition	0
Nbr of Remedial Plug Jobs Rqd - HES Number Of Remedial Plug Jobs Needed After Primary Plug Pumped By HES	0
Nbr of Remedial Sqz Jobs Rqd - HES Number Of Remedial Squeeze Jobs Required After Primary Job Performed By HES	0