

# WELL LOCATION CERTIFICATE

1 OF 1

THIS MAP IS A GIS EXHIBIT AND DOES NOT REPRESENT A BOUNDARY SURVEY.

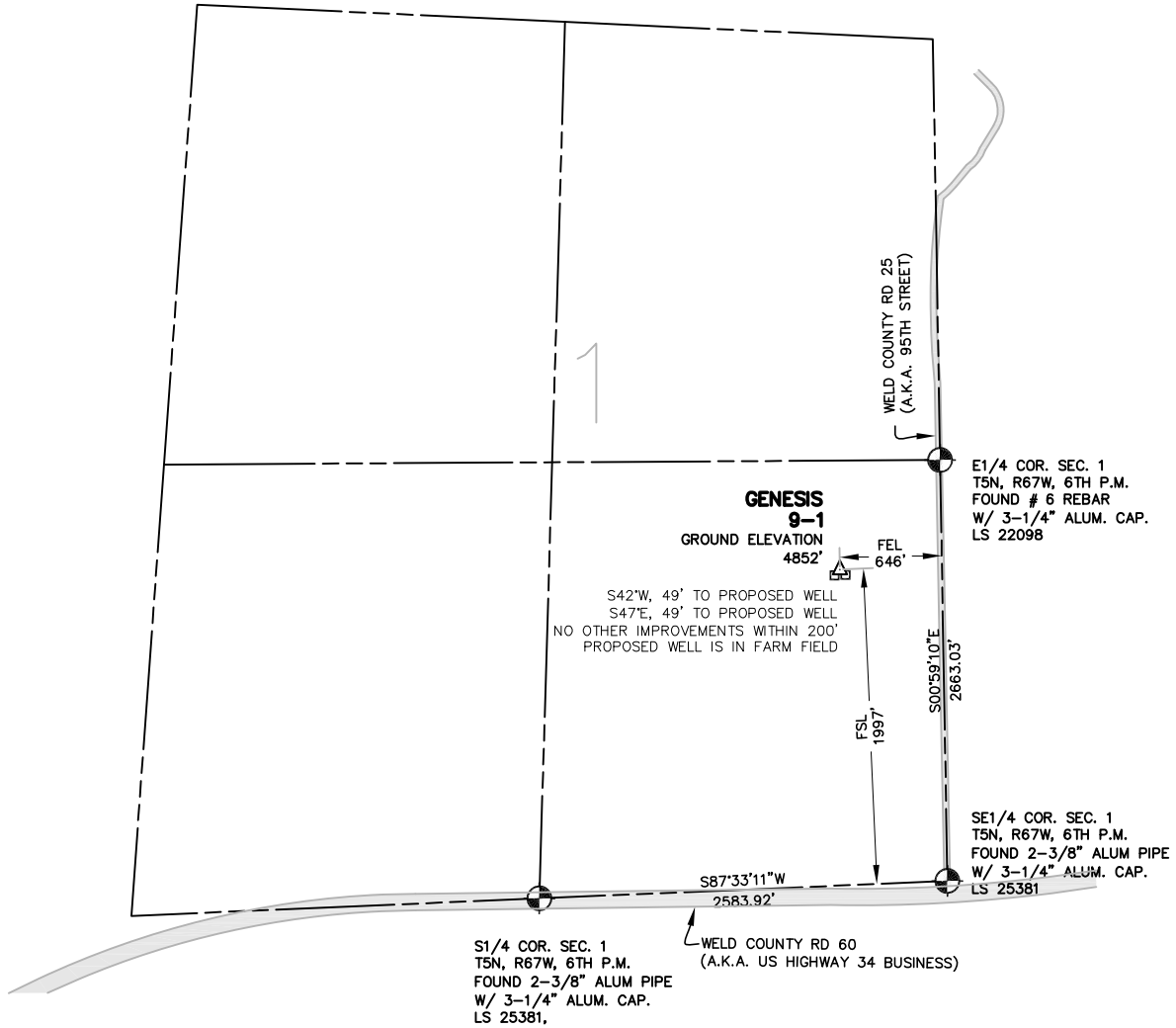
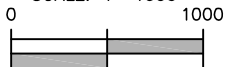


EXHIBIT MAP  
SCALE: 1"=1000'



## WELL LOCATION CERTIFICATE

IN ACCORDANCE WITH A REQUEST FROM SHERRY GLASS OF KP KAUFFMAN INC., CIVILARTS, INC. HAS DETERMINED THE LOCATION OF GENESIS 9-1 WELL SITE TO BE 1997' FSL AND 646' FEL AS MEASURED AT NINETY (90) DEGREES FROM THE SECTION LINES OF SECTION 1, T5N, R67W, OF THE 6TH P.M., WELD COUNTY, CO.

## LEGEND

- = FOUND SURVEY MONUMENT
- = ROAD
- (C) = CALCULATED DIMENSION
- △ = PROPOSED WELL LOCATION
- ◇ = BOTTOM OF HOLE LOCATION
- = OTHER PROPOSED WELL LOCATION
- = EXISTING WELL LOCATION

## NOTES

1. BEARINGS SHOWN ON THIS MAP ARE BASED UPON GPS OBSERVATIONS MADE ON 02/16/2011 BY JOSEPH PUSEY BETWEEN THE EAST 1/4 CORNER AND THE SOUTHEAST CORNER OF SECTION 1, T5N, R67W, OF THE 6TH P.M., HAVING A BEARING OF S00°59'10"E, AS MONUMENTED AND SHOWN HEREON.
2. ELEVATIONS ARE BASED UPON NAVD 88 DATUM.

## PROPOSED SURFACE HOLE DATA

(NAD 83)  
LATITUDE: 40.427002 N  
LONGITUDE: 104.834803 W  
PDOP: <6

## NOTICE

ACCORDING TO COLORADO LAW YOU MUST COMMENCE ANY LEGAL ACTION BASED UPON ANY DEFECT IN THIS SURVEY WITHIN THREE YEARS AFTER YOU FIRST DISCOVERED SUCH DEFECT. IN NO EVENT MAY ANY ACTION BASED UPON ANY DEFECT IN THIS SURVEY BE COMMENCED MORE THAN TEN YEARS FROM THE DATE OF THE CERTIFICATION SHOWN HEREON.

I HEREBY CERTIFY THAT THIS WELL LOCATION CERTIFICATE WAS PREPARED UNDER MY RESPONSIBLE CHARGE ON 03/17/2011 FOR AND ON BEHALF OF KP KAUFFMAN, INC. THAT IT IS NOT A LAND SURVEY PLAT OR AN IMPROVEMENT SURVEY PLAT, AND THAT IT IS NOT TO BE RELIED UPON FOR ESTABLISHMENT OF FENCE, BUILDING OR OTHER FUTURE IMPROVEMENT LINES.

PETER D. STEGER  
COLORADO REGISTERED PROFESSIONAL  
LAND SURVEYOR NO. 25379

DATE: MARCH 17, 2011



ENGINEERING 1860 Lefthand Circle, Suite A  
PLANNING Longmont, CO 80501  
SURVEYING P 303.682.1131  
F 303.682.1149

Z:\597-14\Ldd-597-14\Dwg\597-14-06\SEC-1\GENESIS-9-1.DWG