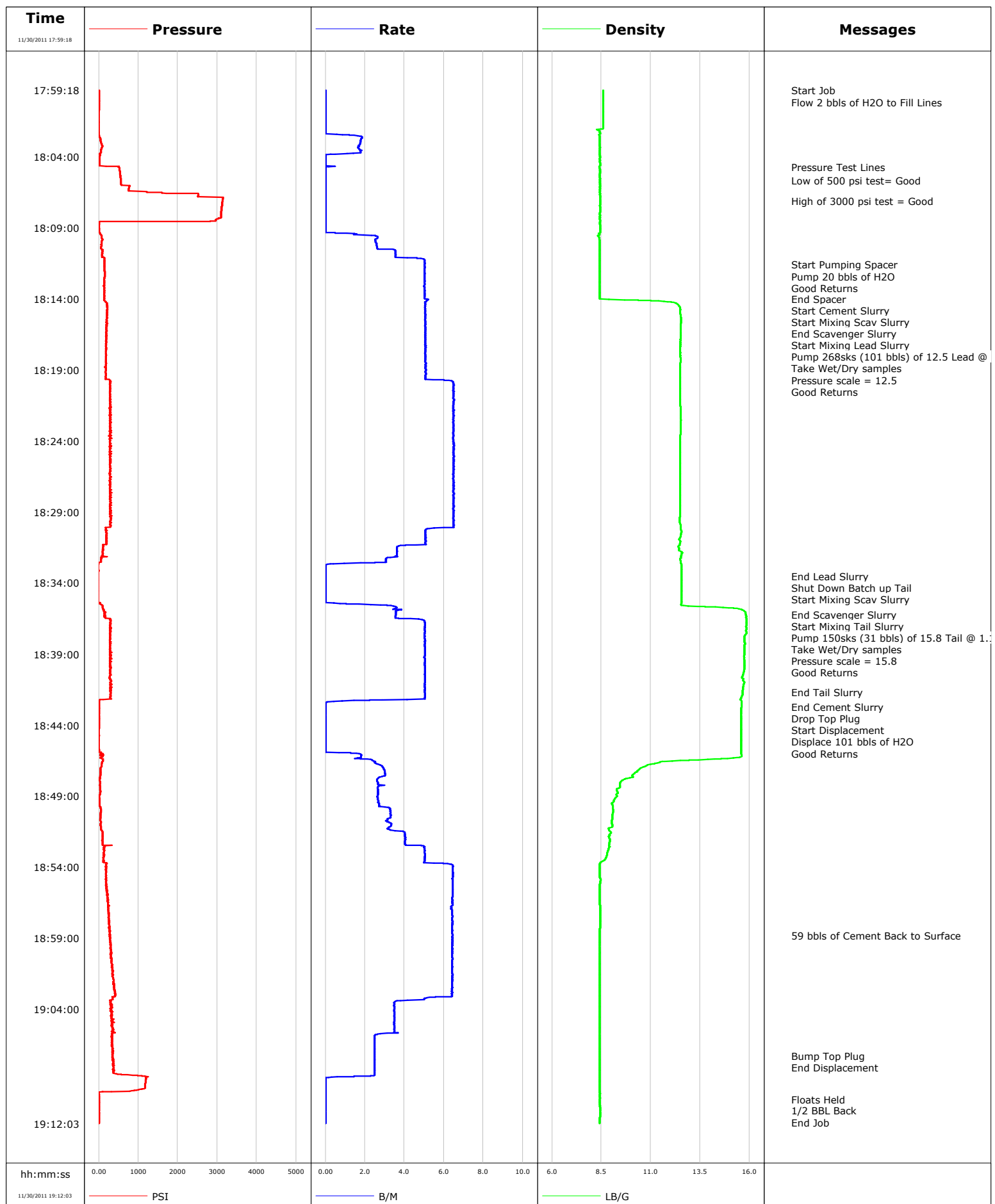
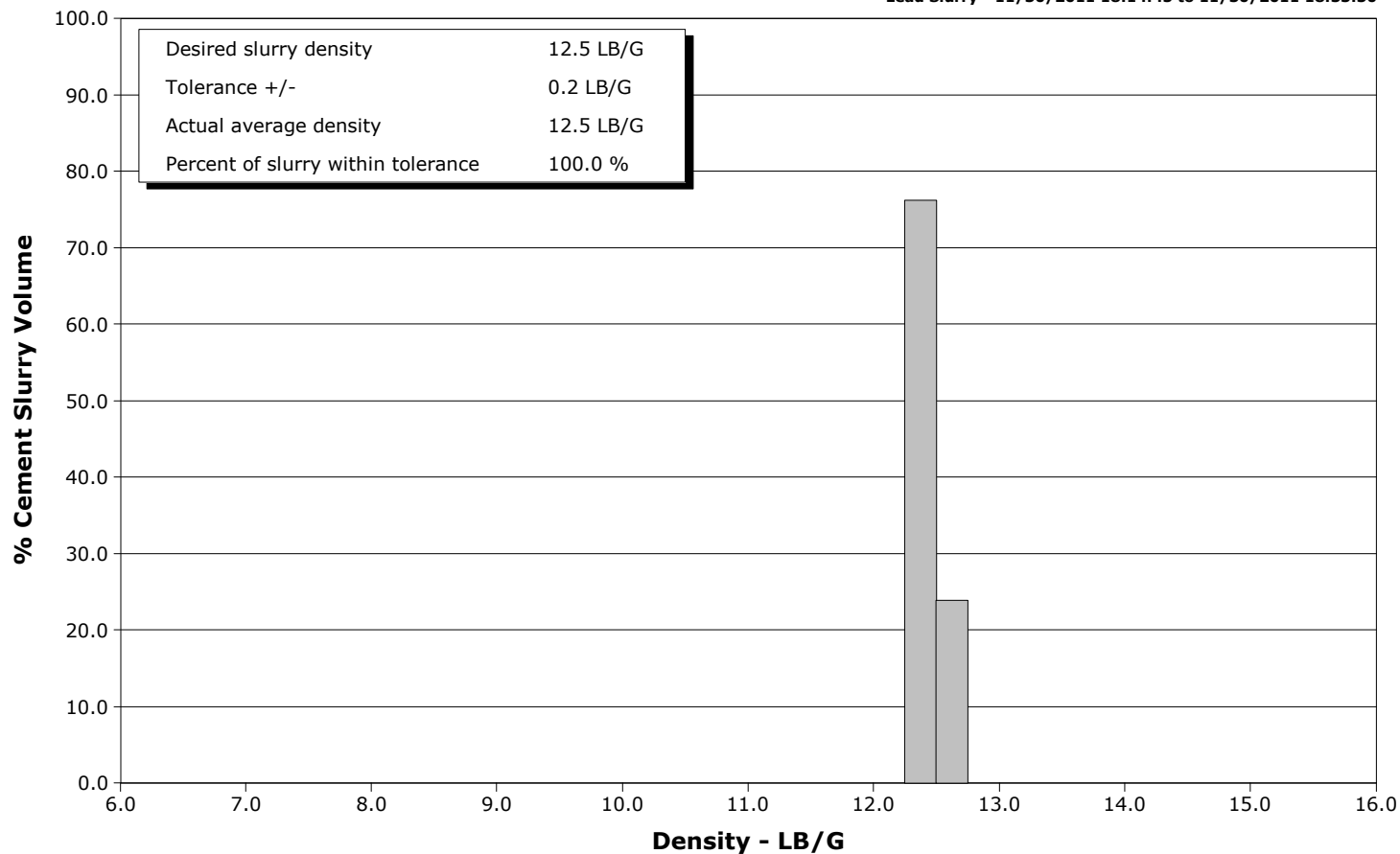


**Well** ENCANA FEE, 19-5A2**Field** MAMM CREEK**Engineer** DANT RYAN/ Charles Peavey**Country** United States**Client** ENCANA**SIR No.** BUNM-00366**Job Type** 9 5/8 SURFACE**Job Date** 11-30-2011

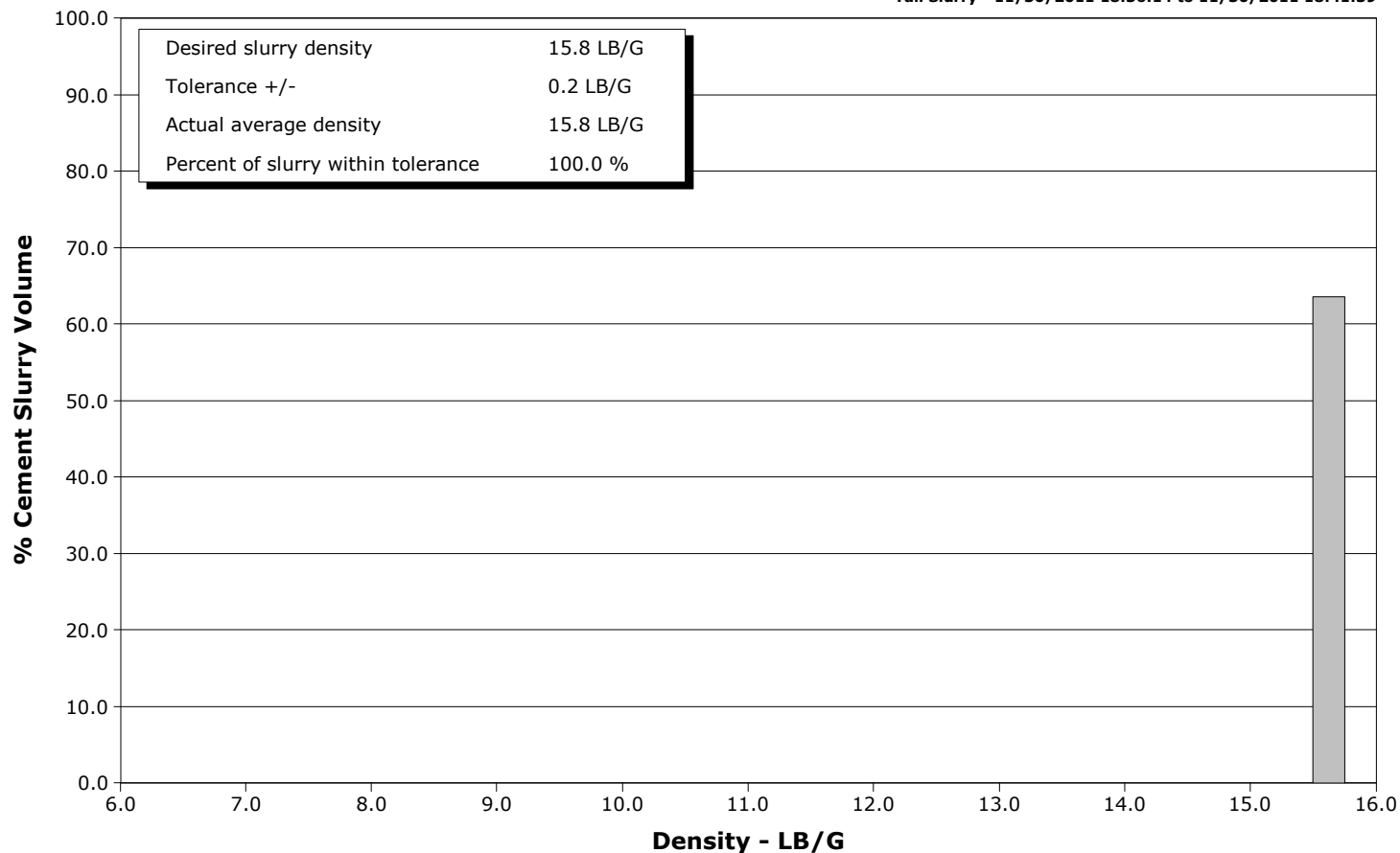
**Well** ENCANA FEE, 19-5A2  
**Field** MAMM CREEK  
**Engineer** DANT RYAN/ Charles Peavey  
**Country** United States

**Client** ENCANA  
**SIR No.** BUNM-00366  
**Job Type** 9 5/8 SURFACE  
**Job Date** 11-30-2011

**Lead Slurry - 11/30/2011 18:14:45 to 11/30/2011 18:33:30**



**Tail Slurry - 11/30/2011 18:36:14 to 11/30/2011 18:41:39**



# Cementing Service Report

				Customer ENCANA				Job Number BUNM-00366										
Well ENCANA FEE, 19-5A2 ENCANA FEE, 19-5A2				Location (legal) K19CNE				Schlumberger Location				Job Start Nov/30/2011						
Field MAMM CREEK			Formation Name/Type Shale			Deviation deg		Bit Size in		Well MD 1344.0 ft		Well TVD 1344.0 ft						
County GARFIELD			State/Province Colorado			BHP psi		BHST 95 degF		BHCT 82 degF		Pore Press. Gradient lb/gal						
Well Master 0631286864			API/UWI															
Rig Name NABORS M-13		Drilled For Gas		Service Via Land		Casing/Liner												
						Depth, ft		Size, in		Weight, lb/ft		Grade		Thread				
Offshore Zone		Well Class New		Well Type Development		40.0		16.0		65.0		N/A		N/A				
						1344.0		9.6		36.0		J55		8RD				
Drilling Fluid Type Bentonite			Max. Density lb/gal		Plastic Viscosity cP		Tubing/Drill Pipe											
							T/D		Depth, ft		Size, in		Weight, lb/ft		Grade		Thread	
Service Line Cementing		Job Type 9 5/8 SURFACE																
Max. Allowed Tub. Press 3000 psi		Max. Allowed Ann. Press 500 psi			WH Connection Single Cement head			Perforations/Open Hole										
								Top, ft		Bottom, ft		shot/ft		No. of Shots		Total Interval ft		
								ft		ft						Diameter in		
								ft		ft								
				Treat Down Casing		Displacement 101.0 bbl		Packer Type			Packer Depth ft							
				Tubing Vol. bbl		Casing Vol. 104.0 bbl		Annular Vol. 78.0 bbl			Openhole Vol. 185.0 bbl							
Casing/Tubing Secured <input checked="" type="checkbox"/>			1 Hole Vol. Circulated prior to Cement <input checked="" type="checkbox"/>			Casing Tools				Squeeze Job								
Lift Pressure 665 psi						Shoe Type Float				Squeeze Type								
Pipe Rotated <input type="checkbox"/>			Pipe Reciprocated <input type="checkbox"/>			Shoe Depth 1344.0 ft				Tool Type								
No. Centralizers			Top Plugs		Bottom Plugs		Stage Tool Type				Tool Depth ft							
Cement Head Type Single						Stage Tool Depth ft				Tail Pipe Size in								
Job Scheduled For Nov/30/2011 16:00			Arrived on Location Nov/30/2011 16:00			Leave Location Nov/30/2011 21:00			Collar Type Float				Tail Pipe Depth ft					
									Collar Depth 1300.0 ft				Sqz. Total Vol. bbl					
Date	Time 24-hr clock	Treating Pressure PSI	Flow Rate B/M	Density LB/G	Volume BBL	Message												
11/30/2011	17:59:18	0	0.0	8.59	36.1	Started Acquisition												
11/30/2011	17:59:31	0	0.0	8.59	36.1	Flow 2 bbls of H2O to Fill Lines												
11/30/2011	18:00:58	-2	0.0	8.58	36.1													
11/30/2011	18:02:38	25	1.8	8.42	0.2													
11/30/2011	18:04:18	16	0.0	8.43	2.2													
11/30/2011	18:04:42	523	0.2	8.38	2.2	Pressure Test Lines												
11/30/2011	18:05:39	561	0.0	8.43	2.2	Low of 500 psi test= Good												
11/30/2011	18:05:58	568	0.0	8.43	2.2													
11/30/2011	18:07:05	3132	0.0	8.43	2.2	High of 3000 psi test = Good												
11/30/2011	18:07:38	3107	0.0	8.43	2.2													
11/30/2011	18:09:18	9	0.0	8.43	2.2													
11/30/2011	18:10:58	83	3.5	8.42	6.6													
11/30/2011	18:11:36	144	5.0	8.42	9.5	Start Pumping Spacer												
11/30/2011	18:11:40	142	5.0	8.42	9.9	Pump 20 bbls of H2O												
11/30/2011	18:12:38	133	5.0	8.42	14.7													
11/30/2011	18:13:59	136	5.0	8.42	21.5	End Spacer												
11/30/2011	18:14:02	139	5.2	8.88	21.8	Start Cement Slurry												
11/30/2011	18:14:05	132	5.2	10.38	22.0	Start Mixing Scav Slurry												
11/30/2011	18:14:18	205	5.0	12.28	23.1													
11/30/2011	18:14:44	212	5.0	12.49	25.3	End Scavenger Slurry												
11/30/2011	18:14:45	221	5.0	12.50	25.4	Start Mixing Lead Slurry												

Well			Field		Job Start		Customer		Job Number	
ENCANA FEE, 19-5A2 ENCANA FEE, 19-5A2			MAMM CREEK		Nov/30/2011		ENCANA		BUNM-00366	
Date	Time 24-hr clock	Treating Pressure PSI	Flow Rate B/M	Density LB/G	Volume BBL	Message				
11/30/2011	18:14:49	204	5.1	12.48	25.7	Take Wet/Dry samples				
11/30/2011	18:14:50	204	5.0	12.49	25.8	Good Returns				
11/30/2011	18:15:58	193	5.1	12.51	31.5					
11/30/2011	18:17:38	182	5.1	12.48	40.0					
11/30/2011	18:19:18	177	5.1	12.48	48.4					
11/30/2011	18:20:58	280	6.5	12.49	58.6					
11/30/2011	18:22:38	291	6.5	12.52	69.4					
11/30/2011	18:24:18	284	6.5	12.49	80.2					
11/30/2011	18:25:58	295	6.5	12.48	91.0					
11/30/2011	18:27:38	322	6.5	12.48	101.8					
11/30/2011	18:29:18	279	6.5	12.47	112.6					
11/30/2011	18:30:58	190	5.1	12.45	122.3					
11/30/2011	18:32:38	-27	0.9	12.53	128.6					
11/30/2011	18:33:30	-18	0.0	12.55	128.6	End Lead Slurry				
11/30/2011	18:33:36	-17	0.0	12.55	128.6	Shut Down Batch up Tail				
11/30/2011	18:33:40	-17	0.0	12.55	128.6	Start Mixing Scav Slurry				
11/30/2011	18:34:18	-18	0.0	12.55	128.6					
11/30/2011	18:35:58	130	3.6	15.75	130.2					
11/30/2011	18:36:13	157	3.6	15.81	131.1	End Scavenger Slurry				
11/30/2011	18:36:14	137	3.6	15.81	131.2	Start Mixing Tail Slurry				
11/30/2011	18:36:16	135	3.6	15.82	131.3	Pump 150sks (31 bbls) of 15.8 Tail @ 1.17 Yield				
11/30/2011	18:36:17	134	3.6	15.82	131.4	Pressure scale = 15.8				
11/30/2011	18:37:38	289	5.0	15.81	137.8					
11/30/2011	18:39:18	272	5.0	15.73	146.2					
11/30/2011	18:40:58	293	5.0	15.74	154.5					
11/30/2011	18:41:39	286	5.0	15.64	158.0	End Tail Slurry				
11/30/2011	18:42:38	6	0.0	15.59	161.1					
11/30/2011	18:42:43	5	0.0	15.59	161.1	End Cement Slurry				
11/30/2011	18:42:45	5	0.0	15.59	161.1	Drop Top Plug				
11/30/2011	18:42:46	5	0.0	15.58	161.1	Start Displacement				
11/30/2011	18:42:48	5	0.0	15.58	161.1	Displace 101 bbls of H2O				
11/30/2011	18:42:49	5	0.0	15.58	161.1	Good Returns				
11/30/2011	18:44:18	-3	0.0	15.56	161.1					
11/30/2011	18:45:58	53	1.3	15.58	161.1					
11/30/2011	18:47:38	33	2.9	10.07	165.3					
11/30/2011	18:49:18	23	2.7	9.12	169.8					
11/30/2011	18:50:58	47	3.3	9.04	174.9					
11/30/2011	18:52:38	132	5.0	8.88	181.4					
11/30/2011	18:54:18	189	6.4	8.42	190.5					
11/30/2011	18:55:58	222	6.4	8.42	201.3					
11/30/2011	18:57:38	248	6.4	8.43	212.0					
11/30/2011	18:58:49	288	6.4	8.42	219.6	59 bbls of Cement Back to Surface				
11/30/2011	18:59:18	288	6.4	8.42	222.7					
11/30/2011	19:00:58	329	6.4	8.42	233.4					
11/30/2011	19:02:38	390	6.4	8.42	244.1					
11/30/2011	19:04:18	321	3.5	8.42	251.8					
11/30/2011	19:05:58	341	2.5	8.42	257.4					
11/30/2011	19:07:17	355	2.5	8.42	260.7	Bump Top Plug				
11/30/2011	19:07:18	355	2.5	8.42	260.7	End Displacement				
11/30/2011	19:07:38	354	2.5	8.42	261.5					
11/30/2011	19:09:18	1174	0.0	8.43	264.3					
11/30/2011	19:10:20	1	0.0	8.43	264.3	Floats Held				
11/30/2011	19:10:21	1	0.0	8.43	264.3	1/2 BBL Back				
11/30/2011	19:10:58	1	0.0	8.43	264.3					

<b>Well</b> ENCANA FEE, 19-5A2 ENCANA FEE, 19-5A2	<b>Field</b> MAMM CREEK	<b>Job Start</b> Nov/30/2011	<b>Customer</b> ENCANA	<b>Job Number</b> BUNM-00366
------------------------------------------------------	----------------------------	---------------------------------	---------------------------	---------------------------------

Post Job Summary

Average Pump Rates, bbl/min					Volume of Fluid Injected, bbl			
Slurry 4.8	N2	Mud	Maximum Rate 6.5		Total Slurry 264.5	Mud 0.0	Spacer 21.7	N2
Treating Pressure Summary, psi					Breakdown Fluid			
Maximum 3148	Final 1	Average 306	Bump Plug to 900	Breakdown	Type	Volume bbl		Density lb/gal
Avg. N2 Percent %		Designed Slurry Volume 132.0 bbl	Displacement 103.2 bbl	Mix Water Temp 55 degF	Cement Circulated to Surface? <input checked="" type="checkbox"/>		Volume 59.0 bbl	
					Washed Thru Perfs <input type="checkbox"/>		To ft	
Customer or Authorized Representative CHARLIE BROWN			Schlumberger Supervisor DANT RYAN/ Charles Peavey			Circulation Lost <input type="checkbox"/>	Job Completed <input checked="" type="checkbox"/>	
						-		-