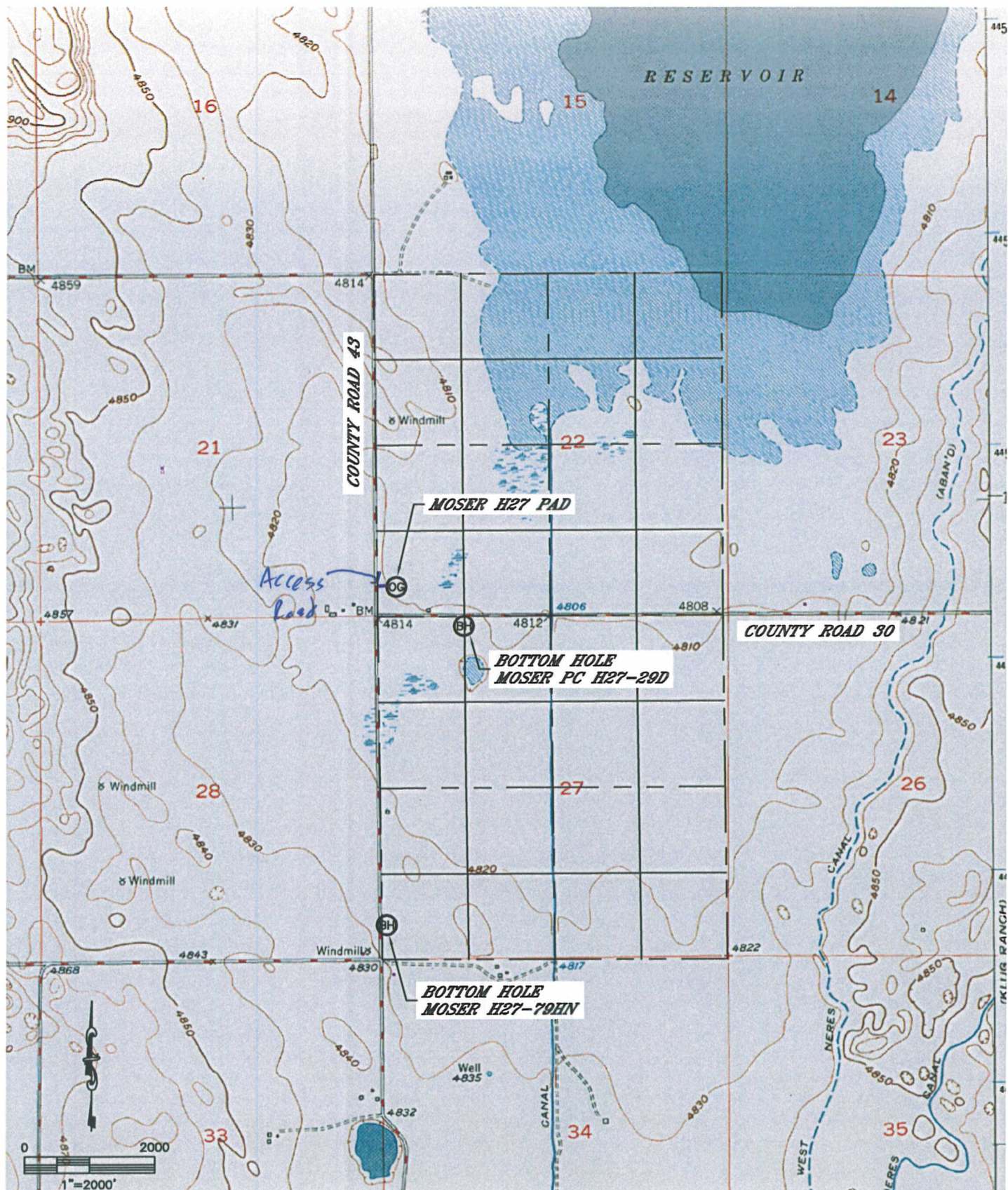


Lat40°, Inc. 1635 Foxtrail Drive, Suite 325 Loveland, CO 970-776-3321

## ACCESS ROAD MAP

MOSER H27-79HN, MOSER PC H27-29D

SECTION: 22  
TOWNSHIP: 3N  
RANGE: 65W



DATE: 1/19/12  
PROJECT#: 2011203