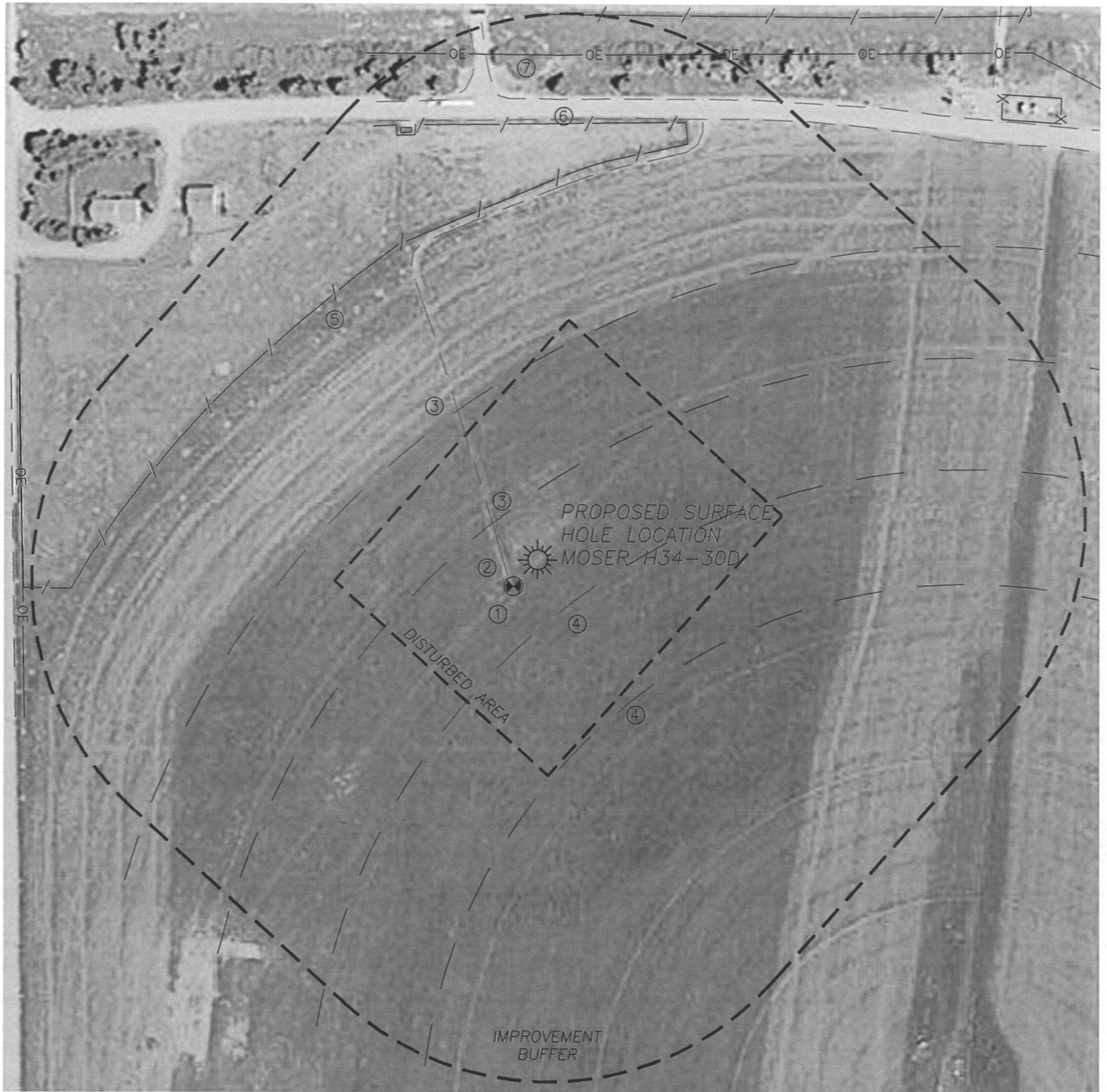


## LOCATION DRAWING MOSER H34-30D

SECTION 34, TOWNSHIP 3 NORTH, RANGE 65 WEST OF THE 6TH PRINCIPAL MERIDIAN



**IMPROVEMENTS**

- |                      |                   |
|----------------------|-------------------|
| 1. WELL—MOSER H34-4: | 47'± SW           |
| 2. FIELD ROAD:       | 42'± SW           |
| 3. PIVOT TRACKS:     | 72'± NW, 218'± NW |
| 4. PIVOT TRACKS:     | 72'± SE, 220'± SE |
| 5. WIRE FENCE:       | 440'± NW          |
| 6. GRAVEL ROAD:      | 575'± N           |
| 7. O.H. UTILITY:     | 660'± N           |

**DISTANCE TO NEAREST:**

- |                     |          |
|---------------------|----------|
| BUILDING:           | 610'± NW |
| PUBLIC ROAD:        | 690'± W  |
| ABOVE GRND UTILITY: | 610'± NW |
|                     | 660'± N  |
| RAILROAD:           | 5280'+   |
| PROP. LINE:         | 640'± S  |

