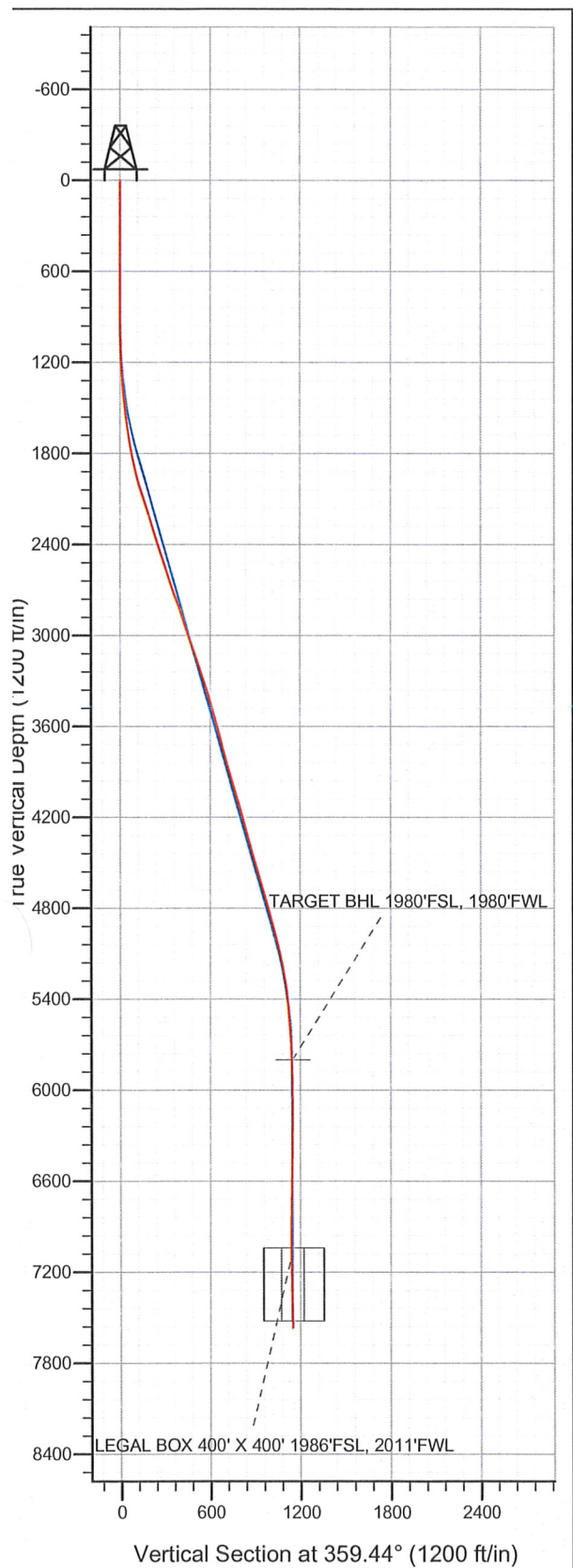
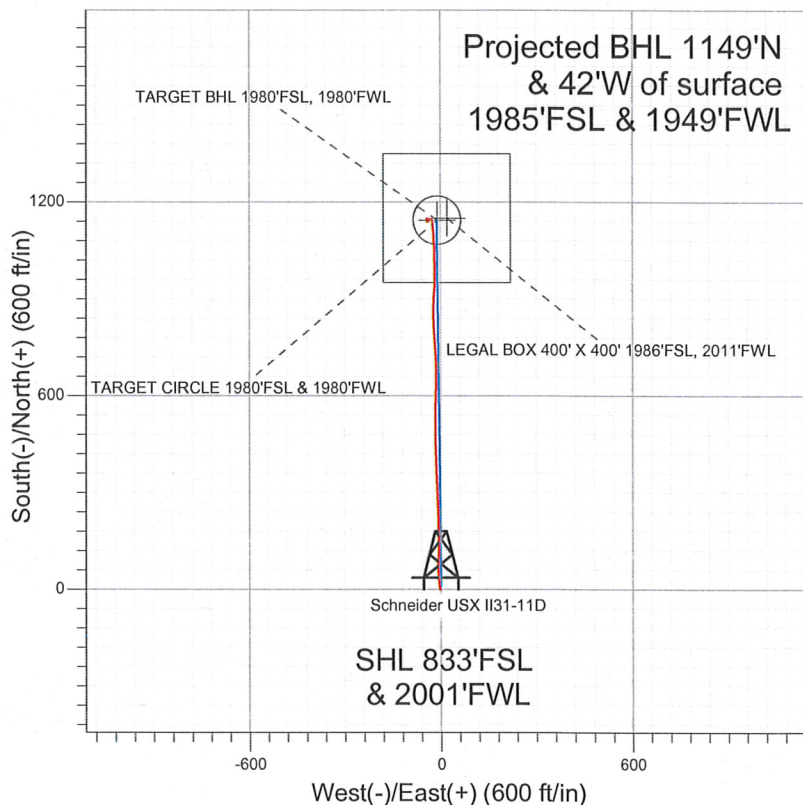


Well Name: Schneider USX II31-11D
Surface Location: Schneider USX II31-13D Pad Sec.31-T7N-R66W
North American Datum 1983 US State Plane 1983 Colorado Northern Zone
Ground Elevation: 4906.0
+N/-S +E/-W Northing Easting Latitude Longitude Slot
0.0 0.0 1435111.09 3187646.55 40.525820 -104.824990
Original Well Elev WELL @ 4919.0ft (Original Well Elev)



NOBLE ENERGY INC WELD COUNTY CO



LEGEND

- Survey #1
- Schneider USX II31-11D, Wellbore #1, Noble Schneider USX II31-11D Plan #1 (12-20-11) R VO
- Wellbore #1

Final Survey Plot

Projected Final Survey -
7724'MD & 7567'TVD @ 1149'VS
0.5 deg Inc 340 deg AZ

Project: SEC.31-T7N-R66W
Site: Schneider USX II31-13D Pad Sec.31-T7N-R66W
Well: Schneider USX II31-11D
Plan: Wellbore #1



Directional

**NOBLE ENERGY INC WELD
COUNTY CO**

SEC.31-T7N-R66W

Schneider USX II31-13D Pad Sec.31-T7N-R66W

Schneider USX II31-11D

Wellbore #1

Survey: Survey #1

Standard Survey Report

27 December, 2011



Company: NOBLE ENERGY INC WELD COUNTY CO
Project: SEC.31-T7N-R66W
Site: Schneider USX II31-13D Pad
 Sec.31-T7N-R66W
Well: Schneider USX II31-11D
Wellbore: Wellbore #1
Design: Wellbore #1

Local Co-ordinate Reference: Well Schneider USX II31-11D
TVD Reference: WELL @ 4919.0ft (Original Well Elev)
MD Reference: WELL @ 4919.0ft (Original Well Elev)
North Reference: True
Survey Calculation Method: Minimum Curvature
Database: Landmark

Project	SEC.31-T7N-R66W, Weld County, Colorado		
Map System:	US State Plane 1983	System Datum:	Mean Sea Level
Geo Datum:	North American Datum 1983		Using Well Reference Point
Map Zone:	Colorado Northern Zone		Using geodetic scale factor

Site Schneider USX II31-13D Pad Sec.31-T7N-R66W

Site Position:
From: Lat/Long **Northing:** 1,435,107.12ft **Latitude:** 40.525810
Position Uncertainty: 0.0 ft **Easting:** 3,187,602.10ft **Longitude:** -104.825150
Slot Radius: " **Grid Convergence:** 0.44 °

Well Schneider USX II31-11D

Well Position **+N/-S** 0.0 ft **Northing:** 1,435,111.09 ft **Latitude:** 40.525820
+E/-W 0.0 ft **Easting:** 3,187,646.55 ft **Longitude:** -104.824990
Position Uncertainty 0.0 ft **Wellhead Elevation:** ft **Ground Level:** 4,906.0 ft

Wellbore Wellbore #1

Magnetics	Model Name	Sample Date	Declination (°)	Dip Angle (°)	Field Strength (nT)
	IGRF2010	12/20/2011	8.84	67.12	53,136

Design Wellbore #1

Audit Notes:

Version: 1.0 **Phase:** ACTUAL **Tie On Depth:** 0.0

Vertical Section:
Depth From (TVD) **+N/-S** **+E/-W** **Direction**
 (ft) (ft) (ft) (°)
 0.0 0.0 0.0 359.44

Survey Program Date 12/27/2011

From (ft)	To (ft)	Survey (Wellbore)	Tool Name	Description
197.0	7,724.0	Survey #1 (Wellbore #1)	MWD	MWD - Standard

Survey

Measured Depth (ft)	Inclination (°)	Azimuth (°)	Vertical Depth (ft)	+N/-S (ft)	+E/-W (ft)	Vertical Section (ft)	Dogleg Rate (°/100ft)	Build Rate (°/100ft)	Turn Rate (°/100ft)
0.0	0.00	0.00	0.0	0.0	0.0	0.0	0.00	0.00	0.00
197.0	0.20	297.00	197.0	0.2	-0.3	0.2	0.10	0.10	0.00
315.0	0.30	176.90	315.0	-0.1	-0.5	-0.1	0.37	0.08	-101.78
443.0	0.00	215.50	443.0	-0.4	-0.5	-0.4	0.23	-0.23	0.00
570.0	0.20	297.70	570.0	-0.3	-0.7	-0.3	0.16	0.16	0.00
698.0	0.20	335.80	698.0	0.0	-0.9	0.0	0.10	0.00	29.77
827.0	0.60	316.90	827.0	0.7	-1.5	0.7	0.32	0.31	-14.65
894.0	0.50	331.90	894.0	1.2	-1.9	1.2	0.26	-0.15	22.39
982.0	0.60	0.70	982.0	2.0	-2.0	2.0	0.33	0.11	32.73
1,068.0	0.90	346.70	1,068.0	3.1	-2.2	3.2	0.41	0.35	-16.28
1,153.0	1.50	353.40	1,153.0	4.9	-2.5	4.9	0.72	0.71	7.88
1,239.0	2.80	355.10	1,238.9	8.1	-2.8	8.1	1.51	1.51	1.98

Company: NOBLE ENERGY INC WELD COUNTY CO
Project: SEC.31-T7N-R66W
Site: Schneider USX II31-13D Pad
Sec.31-T7N-R66W
Well: Schneider USX II31-11D
Wellbore: Wellbore #1
Design: Wellbore #1

Local Co-ordinate Reference: Well Schneider USX II31-11D
TVD Reference: WELL @ 4919.0ft (Original Well Elev)
MD Reference: WELL @ 4919.0ft (Original Well Elev)
North Reference: True
Survey Calculation Method: Minimum Curvature
Database: Landmark

Survey

Measured Depth (ft)	Inclination (°)	Azimuth (°)	Vertical Depth (ft)	+N/-S (ft)	+E/-W (ft)	Vertical Section (ft)	Dogleg Rate (°/100ft)	Build Rate (°/100ft)	Turn Rate (°/100ft)
1,324.0	4.00	355.50	1,323.7	13.1	-3.2	13.2	1.41	1.41	0.47
1,410.0	5.50	353.40	1,409.4	20.2	-3.9	20.2	1.76	1.74	-2.44
1,495.0	6.90	354.00	1,494.0	29.3	-4.9	29.4	1.65	1.65	0.71
1,581.0	7.70	355.00	1,579.3	40.2	-6.0	40.3	0.94	0.93	1.16
1,666.0	9.00	357.20	1,663.3	52.5	-6.8	52.6	1.57	1.53	2.59
1,752.0	9.90	359.40	1,748.2	66.6	-7.2	66.7	1.13	1.05	2.56
1,837.0	12.40	3.10	1,831.6	83.1	-6.8	83.1	3.06	2.94	4.35
1,923.0	14.20	2.50	1,915.3	102.8	-5.8	102.9	2.10	2.09	-0.70
2,008.0	15.90	1.00	1,997.3	124.9	-5.1	124.9	2.05	2.00	-1.76
2,094.0	17.00	358.60	2,079.8	149.2	-5.2	149.3	1.50	1.28	-2.79
2,179.0	17.60	358.90	2,161.0	174.5	-5.8	174.5	0.71	0.71	0.35
2,265.0	18.40	358.80	2,242.8	201.1	-6.3	201.1	0.93	0.93	-0.12
2,350.0	17.50	358.70	2,323.6	227.3	-6.9	227.3	1.06	-1.06	-0.12
2,436.0	17.80	356.70	2,405.6	253.3	-7.9	253.4	0.79	0.35	-2.33
2,522.0	18.00	357.50	2,487.4	279.7	-9.3	279.8	0.37	0.23	0.93
2,607.0	18.70	357.60	2,568.1	306.4	-10.4	306.5	0.82	0.82	0.12
2,693.0	18.40	358.20	2,649.6	333.8	-11.4	333.9	0.41	-0.35	0.70
2,778.0	19.50	358.80	2,730.0	361.4	-12.2	361.5	1.31	1.29	0.71
2,864.0	20.30	358.00	2,810.9	390.6	-13.0	390.7	0.98	0.93	-0.93
2,949.0	18.40	358.00	2,891.1	418.8	-14.0	418.9	2.24	-2.24	0.00
3,035.0	18.30	358.00	2,972.7	445.8	-14.9	446.0	0.12	-0.12	0.00
3,120.0	18.40	359.30	3,053.4	472.6	-15.5	472.7	0.50	0.12	1.53
3,206.0	19.30	1.60	3,134.8	500.4	-15.3	500.5	1.36	1.05	2.67
3,291.0	19.30	359.70	3,215.0	528.5	-15.0	528.6	0.74	0.00	-2.24
3,377.0	17.80	359.70	3,296.5	555.8	-15.1	555.9	1.74	-1.74	0.00
3,462.0	17.20	0.90	3,377.6	581.4	-15.0	581.5	0.82	-0.71	1.41
3,548.0	16.70	2.80	3,459.9	606.4	-14.2	606.5	0.87	-0.58	2.21
3,633.0	15.60	1.50	3,541.5	630.1	-13.3	630.2	1.36	-1.29	-1.53
3,719.0	15.00	0.10	3,624.5	652.7	-13.0	652.8	0.82	-0.70	-1.63
3,804.0	14.40	357.80	3,706.7	674.3	-13.4	674.4	0.98	-0.71	-2.71
3,890.0	15.70	0.10	3,789.7	696.6	-13.7	696.7	1.66	1.51	2.67
3,975.0	16.50	356.80	3,871.4	720.2	-14.4	720.3	1.43	0.94	-3.88
4,061.0	16.60	356.00	3,953.8	744.6	-15.9	744.7	0.29	0.12	-0.93
4,146.0	16.50	356.20	4,035.3	768.8	-17.6	768.9	0.14	-0.12	0.24
4,232.0	16.70	357.60	4,117.7	793.3	-18.9	793.5	0.52	0.23	1.63
4,317.0	16.10	358.40	4,199.3	817.3	-19.8	817.5	0.75	-0.71	0.94
4,403.0	15.30	356.50	4,282.1	840.5	-20.8	840.7	1.11	-0.93	-2.21
4,488.0	14.80	359.20	4,364.1	862.6	-21.6	862.8	1.01	-0.59	3.18
4,574.0	14.90	3.90	4,447.3	884.6	-21.0	884.8	1.41	0.12	5.47
4,660.0	16.60	4.60	4,530.0	907.9	-19.3	908.0	1.99	1.98	0.81
4,745.0	17.40	2.70	4,611.3	932.7	-17.7	932.8	1.15	0.94	-2.24
4,831.0	16.30	0.60	4,693.6	957.6	-17.0	957.7	1.46	-1.28	-2.44
4,916.0	15.60	359.40	4,775.4	981.0	-17.0	981.1	0.91	-0.82	-1.41
5,002.0	15.30	357.80	4,858.2	1,003.9	-17.5	1,004.0	0.61	-0.35	-1.86
5,087.0	15.00	359.10	4,940.3	1,026.1	-18.1	1,026.2	0.53	-0.35	1.53
5,173.0	14.00	359.60	5,023.6	1,047.6	-18.4	1,047.7	1.17	-1.16	0.58
5,258.0	13.20	356.60	5,106.2	1,067.6	-19.0	1,067.7	1.25	-0.94	-3.53
5,344.0	11.00	356.00	5,190.3	1,085.6	-20.2	1,085.7	2.56	-2.56	-0.70
5,429.0	8.60	355.80	5,274.0	1,100.0	-21.2	1,100.1	2.82	-2.82	-0.24
5,515.0	6.80	356.80	5,359.2	1,111.5	-22.0	1,111.6	2.10	-2.09	1.16
5,600.0	5.50	354.20	5,443.7	1,120.6	-22.7	1,120.7	1.56	-1.53	-3.06
5,686.0	4.40	354.20	5,529.4	1,127.9	-23.4	1,128.1	1.28	-1.28	0.00
5,771.0	4.10	357.20	5,614.2	1,134.2	-23.9	1,134.4	0.44	-0.35	3.53

Company: NOBLE ENERGY INC WELD COUNTY CO
Project: SEC.31-T7N-R66W
Site: Schneider USX II31-13D Pad
Sec.31-T7N-R66W
Well: Schneider USX II31-11D
Wellbore: Wellbore #1
Design: Wellbore #1

Local Co-ordinate Reference: Well Schneider USX II31-11D
TVD Reference: WELL @ 4919.0ft (Original Well Elev)
MD Reference: WELL @ 4919.0ft (Original Well Elev)
North Reference: True
Survey Calculation Method: Minimum Curvature
Database: Landmark

Survey

Measured Depth (ft)	Inclination (°)	Azimuth (°)	Vertical Depth (ft)	+N/-S (ft)	+E/-W (ft)	Vertical Section (ft)	Dogleg Rate (°/100ft)	Build Rate (°/100ft)	Turn Rate (°/100ft)
5,857.0	4.00	357.70	5,700.0	1,140.3	-24.2	1,140.5	0.12	-0.12	0.58
5,942.0	2.00	350.90	5,784.8	1,144.7	-24.5	1,144.9	2.39	-2.35	-8.00
5,957.0	1.82	347.89	5,799.9	1,145.2	-24.6	1,145.4	1.37	-1.20	-20.02
TARGET BHL 1980'FSL, 1980'FWL									
6,028.0	1.10	321.10	5,870.8	1,146.8	-25.3	1,147.0	1.37	-1.01	-37.74
6,113.0	0.40	293.70	5,955.8	1,147.6	-26.1	1,147.8	0.90	-0.82	-32.24
6,199.0	0.70	268.90	6,041.8	1,147.7	-26.9	1,147.9	0.44	0.35	-28.84
6,284.0	0.80	279.80	6,126.8	1,147.8	-28.0	1,148.0	0.20	0.12	12.82
6,370.0	1.10	264.10	6,212.8	1,147.8	-29.4	1,148.0	0.46	0.35	-18.26
6,455.0	1.10	260.60	6,297.8	1,147.6	-31.0	1,147.8	0.08	0.00	-4.12
6,541.0	1.30	252.30	6,383.8	1,147.2	-32.7	1,147.4	0.31	0.23	-9.65
6,626.0	1.10	236.90	6,468.7	1,146.4	-34.3	1,146.7	0.44	-0.24	-18.12
6,712.0	1.00	207.10	6,554.7	1,145.3	-35.4	1,145.6	0.64	-0.12	-34.65
6,798.0	1.20	188.10	6,640.7	1,143.7	-35.8	1,144.0	0.48	0.23	-22.09
6,883.0	1.70	168.10	6,725.7	1,141.6	-35.7	1,141.9	0.83	0.59	-23.53
6,969.0	0.90	216.20	6,811.7	1,139.8	-35.8	1,140.1	1.50	-0.93	55.93
7,054.0	0.90	254.60	6,896.6	1,139.1	-36.9	1,139.4	0.70	0.00	45.18
7,140.0	0.80	269.90	6,982.6	1,138.9	-38.1	1,139.3	0.29	-0.12	17.79
7,196.5	0.86	277.78	7,039.2	1,139.0	-38.9	1,139.3	0.23	0.11	13.94
LEGAL BOX 400' X 400' 1986'FSL, 2011'FWL									
7,197.0	0.86	277.78	7,039.6	1,139.0	-38.9	1,139.3	0.00	0.00	0.00
TARGET CIRCLE 1980'FSL & 1980'FWL									
7,225.0	0.90	281.30	7,067.6	1,139.1	-39.4	1,139.4	0.23	0.13	12.55
7,311.0	1.00	342.70	7,153.6	1,139.9	-40.3	1,140.3	1.13	0.12	71.40
7,396.0	1.50	356.00	7,238.6	1,141.7	-40.6	1,142.1	0.68	0.59	15.65
7,482.0	1.80	343.90	7,324.6	1,144.2	-41.0	1,144.5	0.53	0.35	-14.07
7,567.0	1.30	347.70	7,409.5	1,146.4	-41.6	1,146.7	0.60	-0.59	4.47
7,673.0	0.60	341.90	7,515.5	1,148.1	-42.0	1,148.4	0.67	-0.66	-5.47
7,724.0	0.50	340.00	7,566.5	1,148.5	-42.2	1,148.9	0.20	-0.20	-3.73

Checked By: _____ Approved By: _____ Date: _____