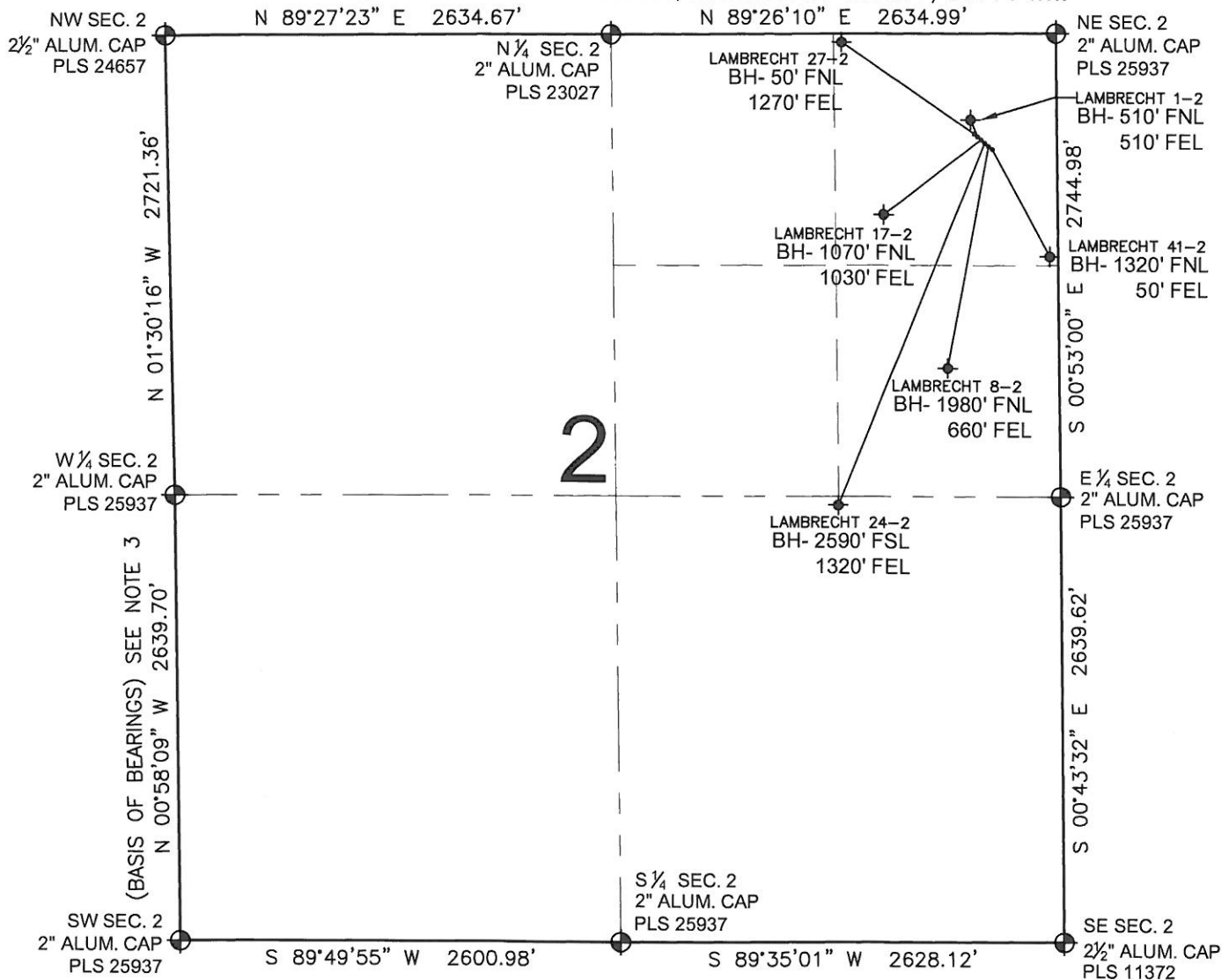


PAD DRAWING: LAMBRECHT 6 PAD

SECTION 2, TOWNSHIP 1 NORTH, RANGE 67 WEST, 6TH P.M.



LEGEND

- ⊕ = EXISTING MONUMENT
- ⬢ = BOTTOM HOLE
- BH= BOTTOM HOLE
- = PROPOSED WELL
- ◆ = EXISTING WELL

NOTES:

- THIS FIELD SURVEY CONFORMS TO THE MINIMUM STANDARDS SET BY THE C.O.G.C.C., RULE NO. 215
- HORIZONTAL POSITIONS AND ORTHOMETRIC ELEVATIONS SHOWN AT THE WELL HEAD, ARE BASED ON GPS-RTK POSITIONS DERIVED FROM MINIMUM 2-HOUR STATIC OBSERVATIONS CORRECTED BY THE NATIONAL GEODETIC SURVEY ONLINE POSITIONING USER SERVICE, O.P.U.S. DATUM: HORIZONTAL = NAD83/2007, VERTICAL = NAVD88
- THE BASIS OF BEARINGS ARE STATE PLANE COORDINATE SYSTEM GRID BEARINGS SHOWN HEREON BETWEEN THE DESCRIBED THE MONUMENTS SHOWN HEREON.
- GRID DISTANCES ARE SHOWN, AS MEASURED IN THE FIELD, WITH TIES TO WELLS MEASURED PERPENDICULAR TO SECTION LINES.

NOTES:

- LAMBRECHT 27-2 TO BE AT 617' FNL, 460' FEL.
- BOTTOM HOLE AT 50' FNL & 1270' FEL.
- LAMBRECHT 1-2 TO BE AT 628' FNL, 448' FEL.
- BOTTOM HOLE AT 510' FNL & 510' FEL.
- LAMBRECHT 17-2 TO BE AT 639' FNL, 437' FEL.
- BOTTOM HOLE AT 1070' FNL & 1030' FEL.
- LAMBRECHT 24-2 TO BE AT 650' FNL, 425' FEL.
- BOTTOM HOLE AT 2590' FSL & 1320' FEL.
- LAMBRECHT 8-2 TO BE AT 660' FNL, 413' FEL.
- BOTTOM HOLE AT 1980' FNL & 660' FEL.
- LAMBRECHT 41-2 TO BE AT 671' FNL, 401' FEL.
- BOTTOM HOLE AT 1320' FNL & 50' FEL.

PREPARED BY:

PFS

Petroleum Field Services, LLC

1801 W. 13th Ave.
Denver, CO 80204



KERR-MCGEE OIL & GAS ONSHORE LP

FIELD DATE:
03-15-12

PAD NAME:
LAMBRECHT 6 PAD

DRAWING DATE:
03-22-12

SURFACE LOCATION:

WELD COUNTY, COLORADO

BY:
KAG

NE 1/4 NE 1/4, SEC. 2, T1N, R67W, 6TH P.M.



0 500 1000

SCALE: 1"=1000'