

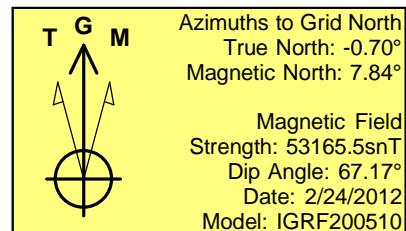
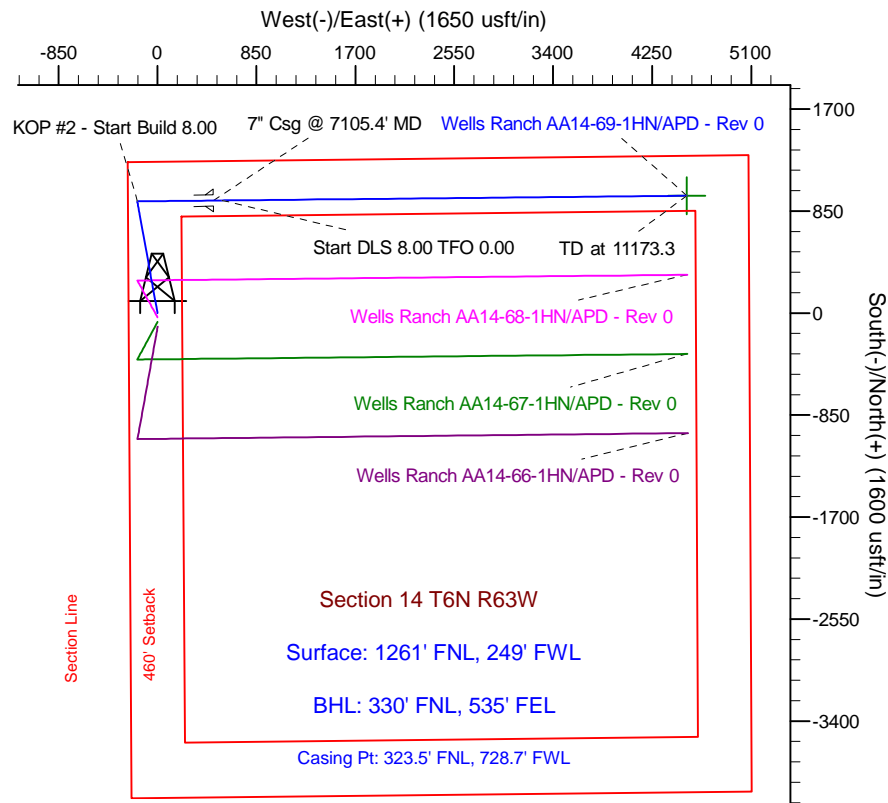
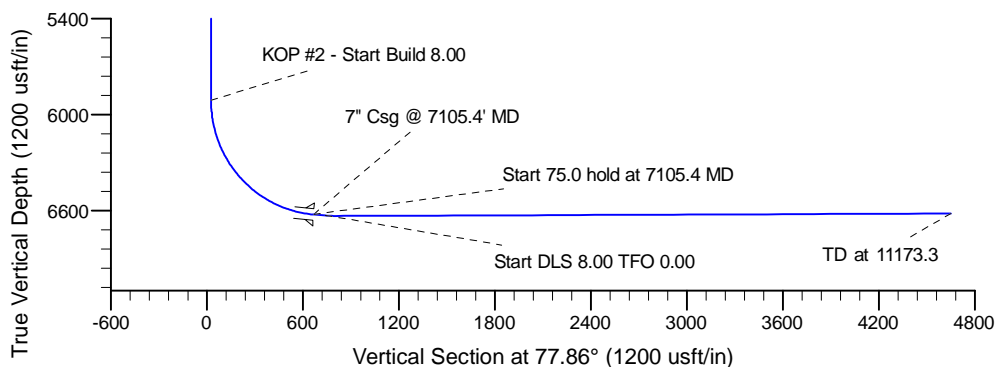
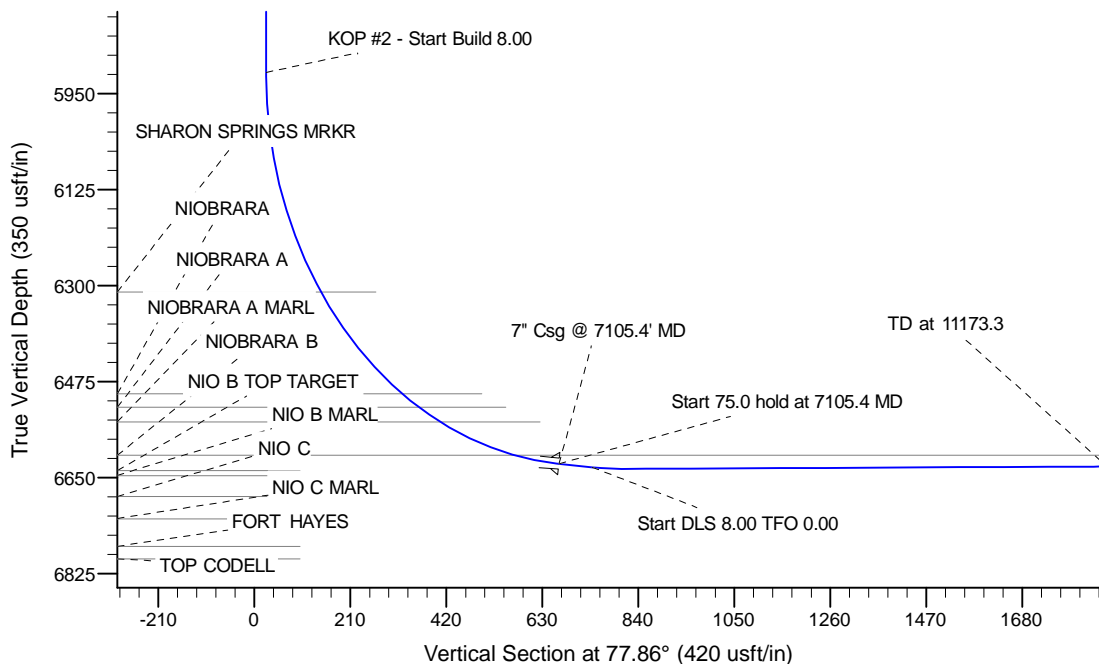
Project: Wattenberg Field
 Site: AA (Sec.14-T06N-R63W) Weld County, CO
 Well: Wells Ranch AA14-69-1HN
 Wellbore: Original Drilling
 Design: APD - Rev 0

Northern Region Drilling

Geodetic System: US State Plane 1983
 Datum: North American Datum 1983
 Ellipsoid: GRS 1980
 Zone: Colorado Northern Zone
 System Datum: Mean Sea Level

SECTION DETAILS

Sec	MD	Inc	Azi	TVD	+N/-S	+E/-W	Dleg	TFace	VSec	Target
1	0.0	0.00	0.00	0.0	0.0	0.0	0.00	0.00	0.0	
2	1500.0	0.00	0.00	1500.0	0.0	0.0	0.00	0.00	0.0	
3	2182.1	17.05	349.41	2172.1	99.0	-18.5	2.50	349.41	2.7	
4	4724.7	17.05	349.41	4602.9	832.0	-155.5	0.00	0.00	22.9	
5	5406.8	0.00	0.00	5275.0	931.0	-174.0	2.50	180.00	25.7	
6	6042.9	0.00	0.00	5911.1	931.0	-174.0	0.00	0.00	25.7	
7	7105.4	85.00	89.43	6624.5	937.5	479.7	8.00	89.43	666.2	
8	7180.4	85.00	89.43	6631.1	938.2	554.5	0.00	0.00	739.3	
9	7245.7	90.23	89.43	6633.8	938.9	619.7	8.00	0.00	803.3	
10	11173.3	90.23	89.43	6618.3	978.0	4547.0	0.00	0.00	4651.0	BHL Tgt 330'FNL, 535'FEL



WELL DETAILS: Wells Ranch AA14-69-1HN

Ground Level: 4780.0
 Northing: 1423351.48 Easting: 3302462.94 Latitude: 40.490410 Longitude: -104.412520

Plan: APD - Rev 0 (Wells Ranch AA14-69-1HN/Original Drilling)

Created By: Carrie Willers Date: 16:56, February 27 2012

OK to submit with 2A as per Noble Drilling
1/28/2012 10:22