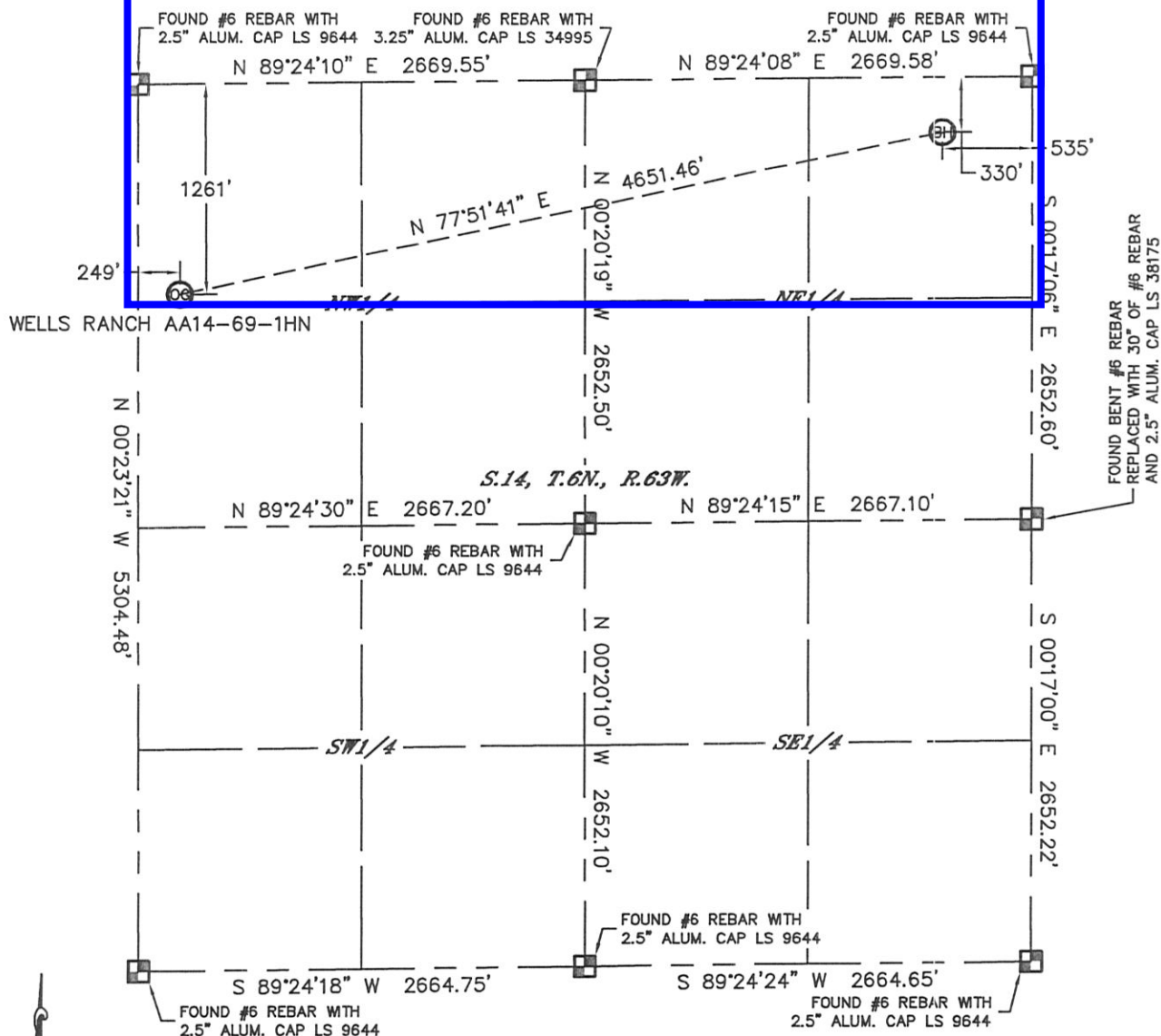


WELL LOCATION CERTIFICATE

SECTION: 14
TOWNSHIP: 6N
RANGE: 63W

THIS MAP DOES NOT REPRESENT A BOUNDARY SURVEY



In accordance with a request from Sean Casper with Noble Energy Inc. Lat40°, Inc. has determined the surface location of the WELLS RANCH AA14-69-1HN to be 1261' from the NORTH line and 249' from the WEST line and the bottom hole to be 330' from the NORTH line and 535' from the EAST line as measured at right angles from the section lines of Section 14, Township 6 North, Range 63 West of the Sixth Principal Meridian, County of Weld, State of Colorado.

I hereby state that this Well Location Certificate was prepared by me, or under my direct supervision, that the fieldwork was completed on 2/8/2012, for and on behalf of Noble Energy Inc. That this is not a Land Survey Plat or an Improvement Survey Plat, and that it is not to be relied upon for establishment of fence, building, or other future improvement lines.

NOTE:

- 1) Bearings shown are Grid Bearings of the Colorado State Plane Coordinate System, North Zone, North American Datum 1983/2007. The lineal dimensions as contained herein are based upon the "U.S. Survey Foot."
- 2) Ground elevations are based on an observed GPS elevation (NAVD 1988 DATUM).
- 3) NEAREST EXISTING WELL: NONE WITHIN SECTION
- 4) IMPROVEMENTS: See LOCATION DRAWING for all visible Improvements within 400' of disturbed area.
- 5) SURFACE USE: RANGELAND
- 6) INSTRUMENT OPERATOR: ADAM KELLY

SURFACE LOCATION

LATITUDE: 40.49041°N
LONGITUDE: 104.41252°W
PDOP: 1.5
ELEV: 4780'
1/4, 1/4: NW1/4NW1/4
NEAREST PROPERTY LINE: 249' W

BOTTOM HOLE

LATITUDE: 40.49294°N
LONGITUDE: 104.39613°W

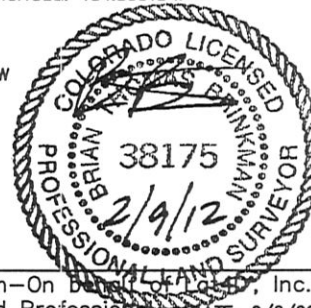
NOTE

According to Colorado law, you must commence any legal action based upon any defect in this W.L.C. within three years after you discover such defect. In no event, may any action based upon any defect in this survey be commenced more than ten years after the date of the certificate shown hereon. (13-80-105 C.R.S.)

LEGEND

- = ALIQUOT MONUMENT AS DESCRIBED
- = CALCULATED POSITION

Brian T. Brinkman—On Behalf of Lat40°, Inc.
Colorado Licensed Professional Land Surveyor No. 38175
DATE: 2/8/2012
PROJECT#: 2012020



SITE SKETCH

WELLS RANCH AA14-69-1HN

WELLS RANCH AA14-69-1HN

Section 11, T.6N., R.63W. (SW1/4SW1/4, SE1/4SW1/4, SW1/4SE1/4, SE1/4SE1/4)

Section 14, T.6N., R.63W. (NW1/4NW1/4, NE1/4NW1/4, NW1/4NE1/4, NE1/4NE1/4, SW1/4NW1/4, SE1/4NW1/4, SW1/4NE1/4, SE1/4NE1/4)

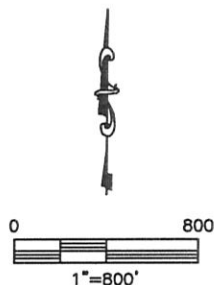
Well Locations: OG (Section 14), BH (Section 16), 1 (Section 11), 2 (Section 11), 7 (Section 11)

Boundary Line: N 77°51'41" E, 4651.46'

Section Dimensions and Bearings:

- Section 11: 1356.22' (West), 1340.38' (North), 1334.77' (East), 1326.12' (South)
- Section 14: 1334.77' (West), 1326.25' (North), 1333.60' (East), 1326.12' (South)
- Section 16: 1334.79' (West), 1326.30' (North), 1333.55' (East), 1326.12' (South)

⑦
WELLS RANCH USX
AA11-25
SW1/4SW1/4
1339' FSL
1323' FWL
LAT-40.49754°N
LONG-104.40861°W
PDOP: 2.1
ELEV: 4800'



DATE: 2/8/2012
PROJECT#: 2012020