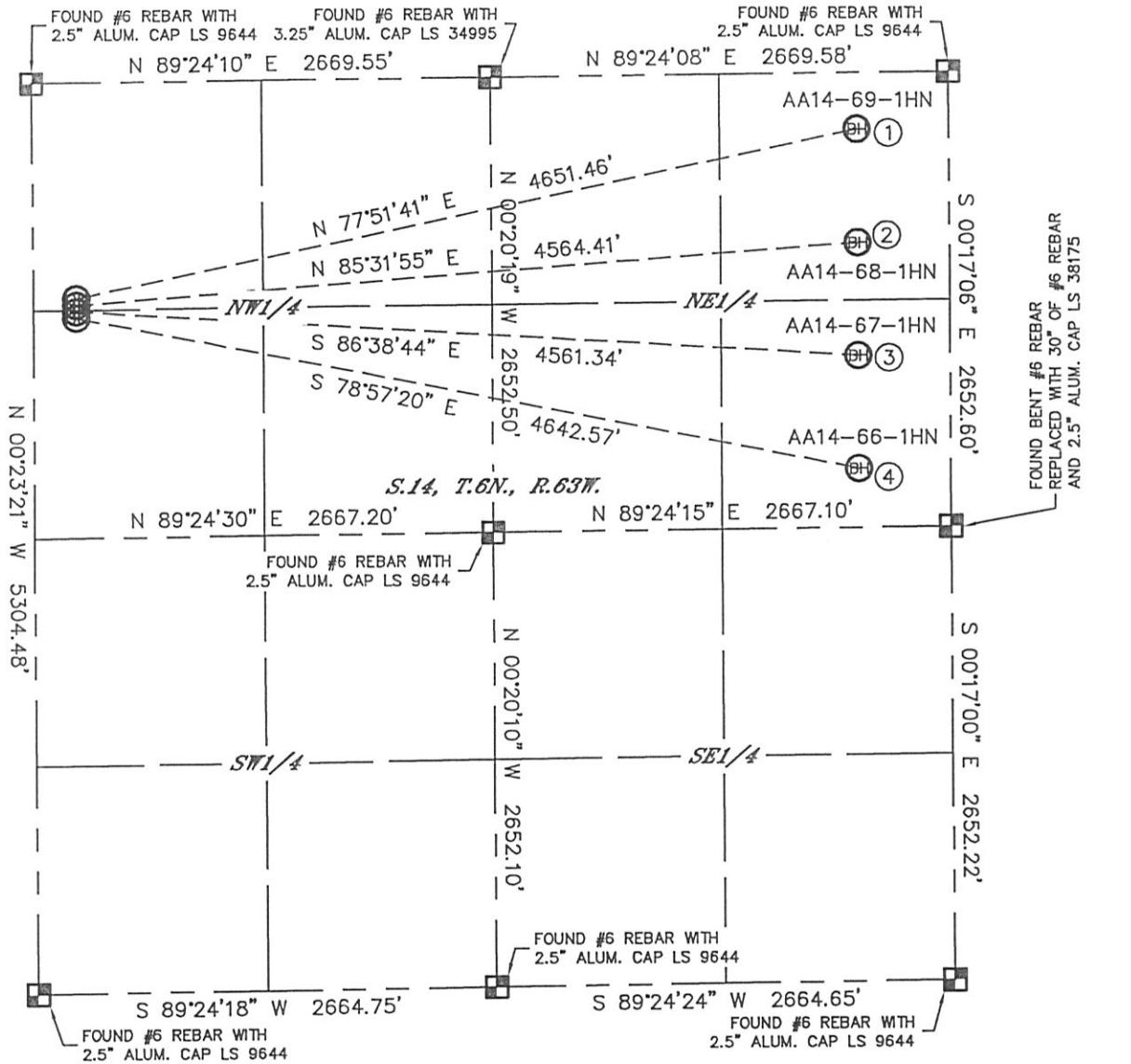


# MULTI-WELL PLAN

WELLS RANCH AA14-69-1HN, 68-1HN, 67-1HN, 66-1HN

THIS MAP DOES NOT REPRESENT A BOUNDARY SURVEY

SECTION: 14  
TOWNSHIP: 6N  
RANGE: 63W



①  
-BOTTOM HOLE-  
WELLS RANCH AA14-69-1HN  
330' FNL  
535' FEL  
LAT-40.49294°N  
LONG-104.39613°W

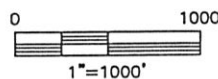
②  
-BOTTOM HOLE-  
WELLS RANCH AA14-68-1HN  
990' FNL  
535' FEL  
LAT-40.49113°N  
LONG-104.39615°W

③  
-BOTTOM HOLE-  
WELLS RANCH AA14-67-1HN  
1650' FNL  
535' FEL  
LAT-40.48932°N  
LONG-104.39617°W

④  
-BOTTOM HOLE-  
WELLS RANCH AA14-66-1HN  
2310' FNL  
535' FEL  
LAT-40.48751°N  
LONG-104.39618°W

## LEGEND

- ALIQUOT MONUMENT AS DESCRIBED
- = CALCULATED POSITION



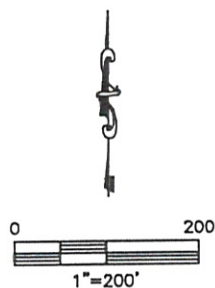
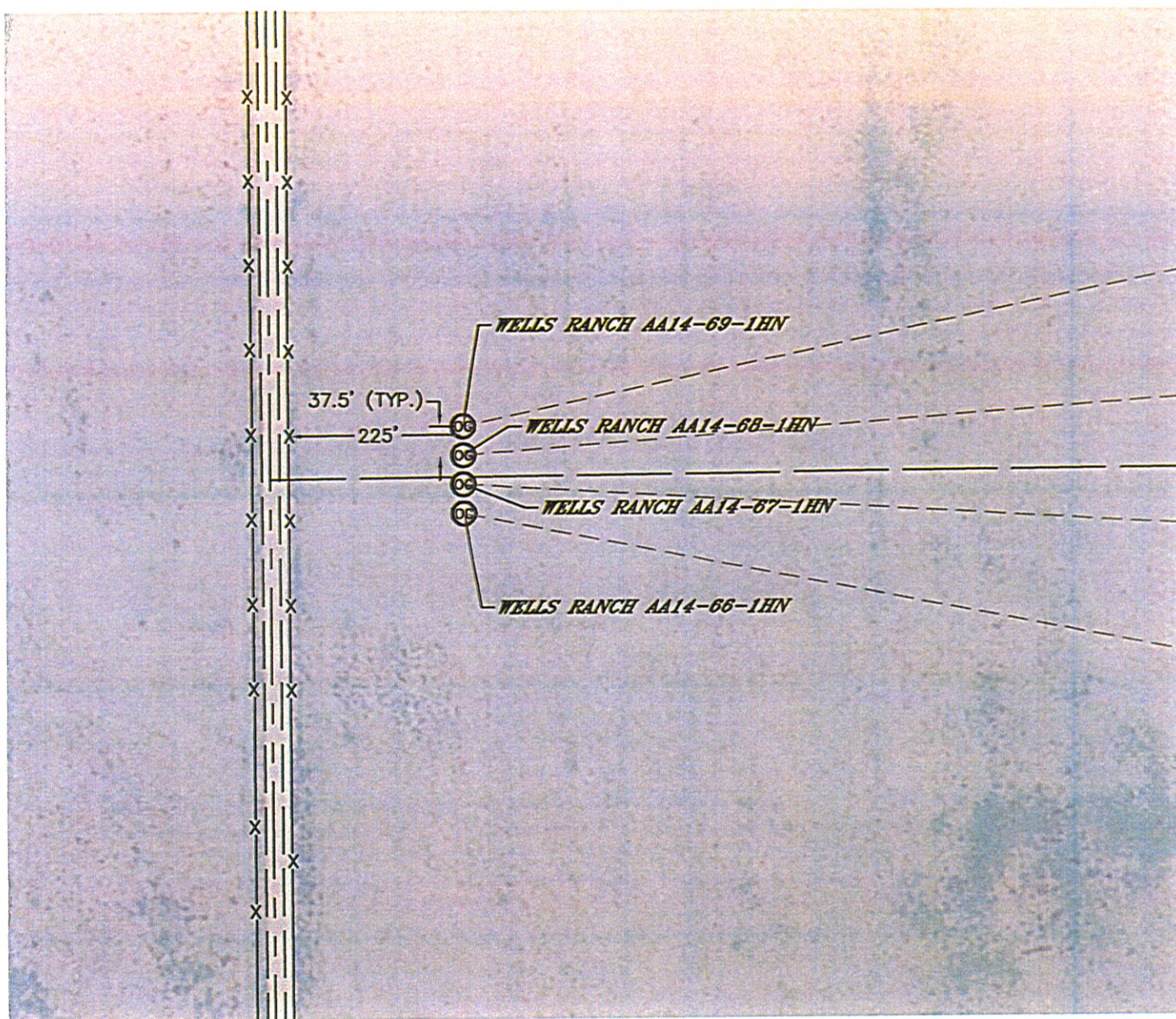
DATE: 2/8/2012  
PROJECT#: 2012020

Lat40°, Inc. 1635 Foxtrail Drive, Suite 325 Loveland, CO 970-776-3321

## MULTI-WELL PLAN

WELLS RANCH AA14-69-1HN, 68-1HN, 67-1HN, 66-1HN

SECTION: 14  
TOWNSHIP: 6N  
RANGE: 63W



DATE: 2/8/2012  
PROJECT#: 2012020