
CHEVRON - MID-CONTINENT EBIZ

SKR 598-36-BV-14
PICEANCE
Garfield County , Colorado

Cement Production Casing
28-Mar-2009

Job Site Documents

The Road to Excellence Starts with Safety

Sold To #: 338668	Ship To #: 2695489	Quote #:	Sales Order #: 6584494
Customer: CHEVRON - MID-CONTINENT EBIZ		Customer Rep: TATUM, ELMER	
Well Name: SKR	Well #: 598-36-BV-14	API/UWI #: 05-045-16968	
Field: PICEANCE	City (SAP): PARACHUTE	County/Parish: Garfield	State: Colorado
Lat: N 39.567 deg. OR N 39 deg. 33 min. 59.926 secs.		Long: W 108.347 deg. OR W -109 deg. 39 min. 12.359 secs.	
Contractor: H&P 316	Rig/Platform Name/Num: H&P 316		
Job Purpose: Cement Production Casing			
Well Type: Development Well	Job Type: Cement Production Casing		
Sales Person: DUNNING, DUSTIN	Srvc Supervisor: HONE, AARON	MBU ID Emp #: 381285	

Job Personnel

HES Emp Name	Exp Hrs	Emp #	HES Emp Name	Exp Hrs	Emp #	HES Emp Name	Exp Hrs	Emp #
ANDERSON, ADAM S	12.5	456683	ARNOLD, EDWARD John	12.5	439784	BARKER, RYAN E	12.5	458751
BRANDON, BRADLEY Vernon	12.5	353157	CHRISTOFFERSON, JUSTIN Wayne	12.5	435308	HONE, AARON D	12.5	381285
SALAZAR, PAUL Omar	12.5	445614	SULLIVAN, MARK W	12.5	425453			

Equipment

HES Unit #	Distance-1 way	HES Unit #	Distance-1 way	HES Unit #	Distance-1 way	HES Unit #	Distance-1 way
10025121	60 mile	10243540C	60 mile	10829464	60 mile	10857016	60 mile
10872113	60 mile	10547945	60 MILE	10951251	60 MILE		

Job Hours

Date	On Location Hours	Operating Hours	Date	On Location Hours	Operating Hours	Date	On Location Hours	Operating Hours
3/28/09	12.5	6						
TOTAL			Total is the sum of each column separately					

Job

Formation Name	Formation Depth (MD)	Top	Bottom	Form Type	Job depth MD	Job Depth TVD	Water Depth	Wk Ht Above Floor	Perforation Depth (MD)	From	To	Job Times	Date	Time	Time Zone
				BHST	6508. ft	6508. ft		3. ft				Called Out	27 - Mar - 2009	21:00	MST
												On Location	28 - Mar - 2009	00:30	MST
												Job Started	28 - Mar - 2009	08:11	MST
												Job Completed	28 - Mar - 2009	09:47	MST
												Departed Loc	28 - Mar - 2009	13:00	MST

Well Data

Description	New / Used	Max pressure psig	Size in	ID in	Weight lbm/ft	Thread	Grade	Top MD ft	Bottom MD ft	Top TVD ft	Bottom TVD ft
OPEN HOLE				7.875				1027	6508		6508
8 5/8 surface casing	Unknown		8.625	8.097	24.				1027		
PRODUCTION CASING	Unknown		4.5	4.	11.6	8 RD	N-80		6486		6486

Sales/Rental/3rd Party (HES)

Description	Qty	Qty uom	Depth	Supplier
PLUG,CMTG,TOP,4 1/2,HWE,3.65 MIN/4.14 MA	1	EA		
PORT. DAS W/CEMWIN;ACQUIRE W/HES, ZI	1	JOB		
ADC (AUTO DENSITY CTRL) SYS, /JOB,ZI	1	JOB		

Tools and Accessories													
Type	Size	Qty	Make	Depth	Type	Size	Qty	Make	Depth	Type	Size	Qty	Make
Guide Shoe					Packer					Top Plug	4.5	1	
Float Shoe					Bridge Plug					Bottom Plug			
Float Collar					Retainer					SSR plug set			
Insert Float										Plug Container	4.5	1	
Stage Tool										Centralizers			
Miscellaneous Materials													
Gelling Agt			Conc		Surfactant			Conc		Acid Type		Qty	Conc %
Treatment Fld			Conc		Inhibitor			Conc		Sand Type		Size	Qty
Fluid Data													
Stage/Plug #: 1													
Fluid #	Stage Type	Fluid Name			Qty	Qty uom	Mixing Density lbm/gal	Yield ft ³ /sk	Mix Fluid Gal/sk	Rate bbl/min	Total Mix Fluid Gal/sk		
1	Water Spacer				50.00	bbl	8.33	.0	.0	.0			
2	Lead Cement	VARICEM (TM) CEMENT (452009)			390.0	sacks	12.8	1.61	7.31		7.7		
		7.704 Gal											
		FRESH WATER											
3	Tail Cement	VARICEM (TM) CEMENT (452009)			631.0	sacks	13.2	1.47	6.32		6.72		
		6.719 Gal											
		FRESH WATER											
4	KCL Displacement				99.8	bbl	8.4	.0	.0	.0			
Calculated Values		Pressures			Volumes								
Displacement	99.8	Shut In: Instant			Lost Returns	0	Cement Slurry	233.1	Pad				
Top Of Cement		5 Min			Cement Returns	0	Actual Displacement	99.8	Treatment				
Frac Gradient		15 Min			Spacers	50	Load and Breakdown		Total Job				
Rates													
Circulating	8	Mixing	6		Displacement	7		Avg. Job	6.5				
Cement Left In Pipe	Amount	47.6 ft	Reason	Shoe Joint									
Frac Ring # 1 @	ID	Frac ring # 2 @	ID	Frac Ring # 3 @	ID	Frac Ring # 4 @	ID						
The Information Stated Herein Is Correct					Customer Representative Signature								

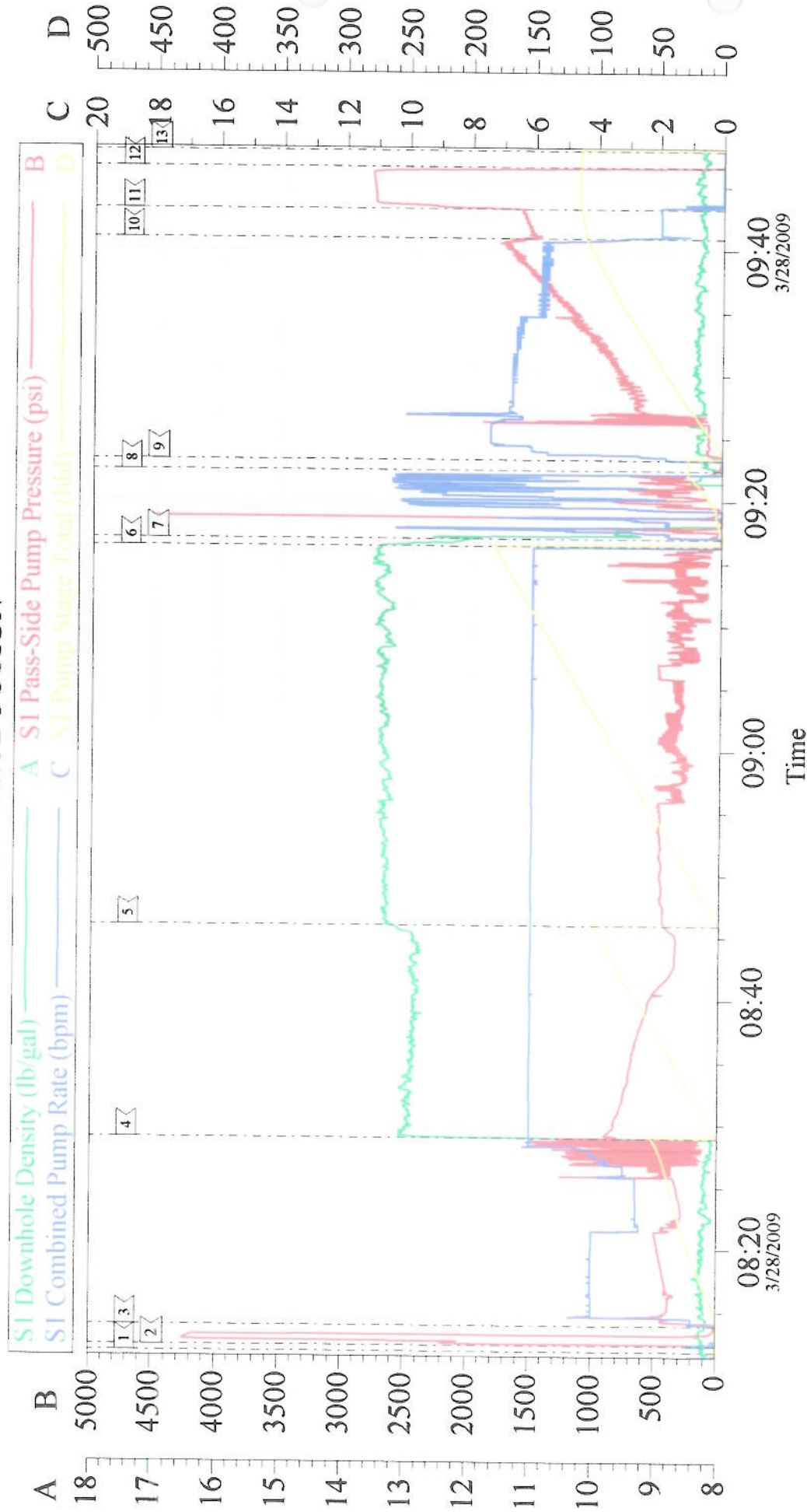
The Road to Excellence Starts with Safety

Sold To #: 338668	Ship To #: 2695489	Quote #:	Sales Order #: 6584494
Customer: CHEVRON - MID-CONTINENT EBIZ	Customer Rep: TATUM, ELMER		
Well Name: SKR	Well #: 598-36-BV-14	API/UWI #: 05-045-16968	
Field: PICEANCE	City (SAP): PARACHUTE	County/Parish: Garfield	State: Colorado
Legal Description:			
Lat: N 39.567 deg. OR N 39 deg. 33 min. 59.926 secs.		Long: W 108.347 deg. OR W -109 deg. 39 min. 12.359 secs.	
Contractor: H&P 316	Rig/Platform Name/Num: H&P 316		
Job Purpose: Cement Production Casing	Ticket Amount:		
Well Type: Development Well	Job Type: Cement Production Casing		
Sales Person: DUNNING, DUSTIN	Srvc Supervisor: HONE, AARON	MBU ID Emp #: 381285	

Activity Description	Date/Time	Cht #	Rate bbl/min	Volume bbl		Pressure psig		Comments
				Stage	Total	Tubing	Casing	
Call Out	03/27/2009 21:00							
Pre-Convoy Safety Meeting	03/27/2009 22:50							ASSIGNED SAFETY OBSERVER DUTIES TO JUSTIN CHRISTOFFERSON.
Crew Leave Yard	03/27/2009 23:00							
Arrive At Loc	03/28/2009 00:30							RIG RUNNING CASING UPON ARRIVAL. APPROXIMATLY 80 JOINTS LEFT.
Assessment Of Location Safety Meeting	03/28/2009 00:40							LARGE LOCATION.
Pre-Rig Up Safety Meeting	03/28/2009 00:50							
Rig-Up Equipment	03/28/2009 01:00							
Pre-Job Safety Meeting	03/28/2009 07:50							PLUG CONTAINER INSPECTED. STAR ZIP TIED.
Start Job	03/28/2009 08:11							HOLE- 7 7/8" TD-6508' PRODUCTION CSG- 4 1/2" 11.6# N-80 TP- 6486' SJ-47.6. MUD- 10.5# SURFACE CSG- 8 5/8" 24# SET AT 1027'
Test Lines	03/28/2009 08:12							5000 PSI.
Pump Spacer	03/28/2009 08:13		4	50			1500.0	H2O, POLYFLAKE, RED DYE.
Pump Lead Cement	03/28/2009 08:28		6	111.1			890.0	VARICEM- 390 SKS, 12.8 PPG, 1.6 FT3/SK, 7.31 GAL/SK BP-18

CHEVRON

4 1/2" PRODUCTION



Local Event Log			
1	START JOB	08:11:50	08:12:18
2	TEST LINES	08:12:18	08:13:56
3	PUMP SPACER	08:13:56	08:45:38
4	PUMP LEAD CEMENT	08:28:57	08:45:38
5	PUMP TAIL CEMENT	08:45:38	09:16:22
6	SHUT DOWN	09:16:22	09:22:28
7	CLEAN LINES	09:16:57	09:22:28
8	DROP TOP PLUG	09:22:28	09:23:17
9	PUMP DISPLACEMENT	09:23:17	09:43:14
10	SLOW RATE	09:40:53	09:43:14
11	BUMP PLUG	09:43:14	09:46:31
12	CHECK FLOATS	09:46:31	
13	END JOB	09:47:49	

Customer: CHEVRON
Well Description: SKR 598-36-BV-14
Company Rep: ELMER TATUM

Job Date: 28-Mar-2009
Job Type: PRODUCTION
Cement Supervisor: AARON HONE

Sales Order #: 6584494
ADC Used: YES
Elite # / Operator: 10/ PAUL SALAZAR