
CHEVRON - MID-CONTINENT EBIZ

SKR 598-36-BV-13
SKINNER RIDGE
Garfield County , Colorado

Cement Surface Casing

05-Jan-2009

Job Site Documents

The Road to Excellence Starts with Safety

Sold To #: 338668		Ship To #: 2695488		Quote #:		Sales Order #: 6422576	
Customer: CHEVRON - MID-CONTINENT EBIZ				Customer Rep: DOHERTY, ED			
Well Name: SKR		Well #: 598-36-BV-13		API/UWI #: 05-045-16930			
Field: SKINNER RIDGE		City (SAP): PARACHUTE		County/Parish: Garfield		State: Colorado	
Lat: N 39.567 deg. OR N 39 deg. 33 min. 59.89 secs.				Long: W 108.347 deg. OR W -109 deg. 39 min. 12.24 secs.			
Contractor: H&P 316		Rig/Platform Name/Num: H&P316					
Job Purpose: Cement Surface Casing							
Well Type: Development Well				Job Type: Cement Surface Casing			
Sales Person: DUNNING, DUSTIN				Srv Supervisor: HAYES, DIRK		MBU ID Emp #: 336768	
Job Personnel							
HES Emp Name	Exp Hrs	Emp #	HES Emp Name	Exp Hrs	Emp #	HES Emp Name	Exp Hrs
EDWARDS, RICHARD Delbert	7.0	380448	FRAMPTON, KIRK	7.0	438934	HAYES, DIRK A	7.0
ROSS, CHUCK	7.0	453128					
Equipment							
HES Unit #	Distance-1 way	HES Unit #	Distance-1 way	HES Unit #	Distance-1 way	HES Unit #	Distance-1 way
10296152C	120 mile	10719775	120 mile	10867425	120 mile	10897797	120 mile
10897891	120 mile						
Job Hours							
Date	On Location Hours	Operating Hours	Date	On Location Hours	Operating Hours	Date	On Location Hours
01-05-09	7	1					
TOTAL		<i>Total is the sum of each column separately</i>					
Job							
Formation Name				Job Times			
Formation Depth (MD)		Top	Bottom	Called Out	Date	Time	Time Zone
Form Type		BHST		On Location	05 - Jan - 2009	08:50	MST
Job depth MD		1025. ft	Job Depth TVD	Job Started	05 - Jan - 2009	13:00	MST
Water Depth			Wk Ht Above Floor	Job Completed	05 - Jan - 2009	18:52	MST
Perforation Depth (MD)		From	To	Departed Loc	05 - Jan - 2009	21:30	MST
Well Data							
Description	New / Used	Max pressure psig	Size in	ID in	Weight lbm/ft	Thread	Grade
							Top MD ft
							Bottom MD ft
							Top TVD ft
							Bottom TVD ft
Sales/Rental/3rd Party (HES)							
Description				Qty	Qty uom	Depth	Supplier
PLUG,CMTG,TOP,8 5/8,HWE,7.20 MIN/8.09 MA				1	EA		
Tools and Accessories							
Type	Size	Qty	Make	Depth	Type	Size	Qty
Guide Shoe					Packer		
Float Shoe					Bridge Plug		
Float Collar					Retainer		
Insert Float							
Stage Tool							
Miscellaneous Materials							
Gelling Agt		Conc		Surfactant		Conc	
Treatment Fld		Conc		Inhibitor		Conc	
				Acid Type		Qty	
				Sand Type		Size	
						Conc	%
						Qty	

Fluid Data										
Stage/Plug #: 1										
Fluid #	Stage Type	Fluid Name	Qty	Qty uom	Mixing Density lbm/gal	Yield ft ³ /sk	Mix Fluid Gal/sk	Rate bbl/min	Total Mix Fluid Gal/sk	
1	Dye Spacer with PolyFlake		30	bbl	8.33	.0	.0	.0		
2	Lead Cement	VERSACEM (TM) SYSTEM (452010)	135	sacks	12.3	2.38	13.75			
	2 %	CAL-SEAL 60, 50 LB BAG (101217146)								
	2 %	ECONOLITE (100001580)								
	0.3 %	VERSASET, 55 LB SK (101376573)								
	5.64 lbm	SALT, 100 LB BAG (100003652)								
	0.125 lbm	POLY-E-FLAKE (101216940)								
	0.25 %	D-AIR 3000 (101007446)								
	13.75 Gal	FRESH WATER								
3	Tail Cement	VERSACEM (TM) SYSTEM (452010)	135	sacks	12.8	2.11	11.75			
	2 %	CAL-SEAL 60, 50 LB BAG (101217146)								
	2 %	ECONOLITE (100001580)								
	0.3 %	VERSASET, 55 LB SK (101376573)								
	5.64 lbm	SALT, 100 LB BAG (100003652)								
	11.75 Gal	FRESH WATER								
4	Displacement		59.6	bbl	8.33	.0	.0	.0		
Calculated Values		Pressures		Volumes						
Displacement	59.6	Shut In: Instant		Lost Returns	YES	Cement Slurry	107	Pad		
Top Of Cement	SURFACE	5 Min		Cement Returns	YES	Actual Displacement	61	Treatment		
Frac Gradient		15 Min		Spacers	30	Load and Breakdown		Total Job		
Rates										
Circulating		Mixing	6.5	Displacement	4	Avg. Job	5.5			
Cement Left In Pipe	Amount	0 ft	Reason	Shoe Joint						
Frac Ring # 1 @	ID	Frac ring # 2 @	ID	Frac Ring # 3 @	ID	Frac Ring # 4 @	ID			
The Information Stated Herein Is Correct				Customer Representative Signature						

The Road to Excellence Starts with Safety

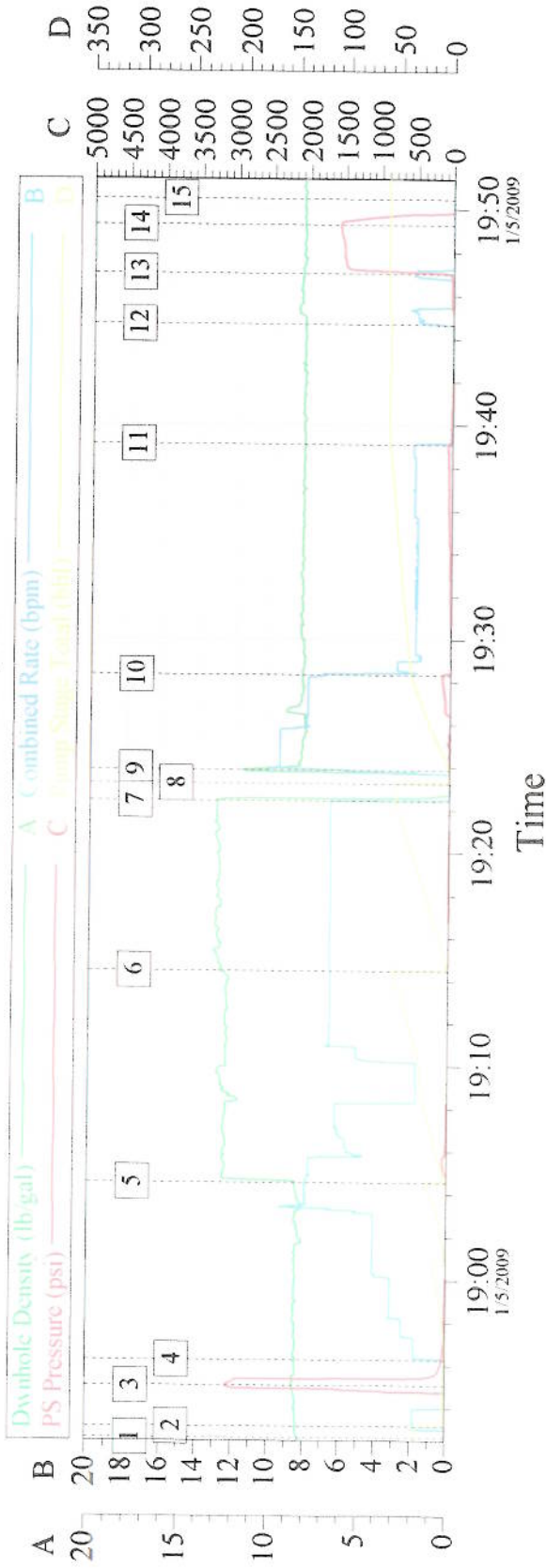
Sold To #: 338668	Ship To #: 2695488	Quote #:	Sales Order #: 6422576
Customer: CHEVRON - MID-CONTINENT EBIZ	Customer Rep: DOHERTY, ED		
Well Name: SKR	Well #: 598-36-BV-13	API/UWI #: 05-045-16930	
Field: SKINNER RIDGE	City (SAP): PARACHUTE	County/Parish: Garfield	State: Colorado
Legal Description:			
Lat: N 39.567 deg. OR N 39 deg. 33 min. 59.89 secs.		Long: W 108.347 deg. OR W -109 deg. 39 min. 12.24 secs.	
Contractor: H&P 316	Rig/Platform Name/Num: H&P316		
Job Purpose: Cement Surface Casing	Ticket Amount:		
Well Type: Development Well	Job Type: Cement Surface Casing		
Sales Person: DUNNING, DUSTIN	Srv Supervisor: HAYES, DIRK	MBU ID Emp #: 336768	

Activity Description	Date/Time	Cht #	Rate bbl/min	Volume bbl		Pressure psig		Comments
				Stage	Total	Tubing	Casing	
Call Out	01/05/2009 09:00							
Crew Leave Yard	01/05/2009 11:00							
Arrive at Location from Service Center	01/05/2009 13:00							
Assessment Of Location Safety Meeting	01/05/2009 13:05							
Other	01/05/2009 13:07							ARRIVED ON LOCATION @ 13:00 JAN 05, 2009 CHEVRON STILL RUNNING CASING WITH APPROX 9 JOINTS TO RUN
Safety Meeting - Pre Rig-Up	01/05/2009 13:10							
Safety Meeting - Pre Job	01/05/2009 18:30							
Start Job	01/05/2009 18:52							TD 1025, TP 936.92, SHOE 47.4, MUD 9.2
Prime Pumps	01/05/2009 18:53		2		2		32.0	PUMP 2 BBLS AHEAD TO PRIME LINES
Test Lines	01/05/2009 18:55		0.5		0.5		3000.0	
Pump Spacer 1	01/05/2009 18:56		5		10		170.0	PUMP 10 BBLOS OF FRESH H2O WITH 10 lbs OF POLYFLAKE
Pump Spacer 2	01/05/2009 18:57		5		20		120.0	PUMP 20 BBLS OF FRESH H2O
Pump Lead Cement	01/05/2009 19:04		6.5		57.2		183.0	135 SKS @ 12.3 YIELD 2.38 W/R 13.75
Pump Tail Cement	01/05/2009 19:14		6.5		50.7		84.0	135 SKS @ 12.8 YIELD 2.11 W/R 11.75
Shutdown	01/05/2009 19:22							

Cementing Job Log

Activity Description	Date/Time	Cht #	Rate bbl/min	Volume bbl		Pressure psig		Comments
				Stage	Total	Tubing	Casing	
Drop Top Plug	01/05/2009 19:23							
Pump Displacement	01/05/2009 19:24		9.5		59.6		133.0	PUMP FRESH H2O FOR DISPLACEMENT WASHED UP ON TOP OF PLUG, AT 27 BBLS AWAY SLOW RATE TO 8 BBLS A MIN AT 37 BBLS AWAY LOST RETURNS AND SLOWED RATE TO 2 BBLS PER MIN
Slow Rate	01/05/2009 19:28		8		47		43.0	AT 60 BBLS AWAY COMP REP ASKED US TO SHUT DOWN AND HAD NOT BUMPED PLUG RESTARTED DISPLACEMENT AND LANDED PLUG 61 BBLS AWAY
Bump Plug	01/05/2009 19:47		2		61		1406.0	BUMP TOP PLUG @ 1000 PSI OVER LAND PRESSURE (199.2)
Check Floats	01/05/2009 19:49							FLOATS HELD
End Job	01/05/2009 19:50							
Other	01/05/2009 19:51							DID NOT MOVE PIPE DURING JOB, APPROX 3 BBLS AWAY WHEN WE LOST RETURNS DID NOT GET RETURNS BACK
Other	01/05/2009 19:52							CEMENT JOB WAS DONE OFF-LINE PER COMPANY MAN
Other	01/05/2009 19:53							THANK YOU FROM HALLIBURTON DIRK HAYES AND CREW

8 5/8" SURFACE



Event Log				
1	start job	18:52:39	2	pump 2 bbls ahead to prime lines 18:53:10
3	test lines	18:55:04	4	pump fresh h2o spacer w/polyflake 18:56:17
5	pump lead cement	19:04:34	6	pump tail cement 19:14:29
7	shut down	19:22:26	8	drop top plug 19:23:14
9	pump displacement	19:23:52	10	slow rate 19:28:18
11	shut down plug had not bumped	19:39:05	12	start pumping again 19:44:40
13	bump top plug	19:47:01	14	check floats 19:49:16
15	end job	19:50:28		

Customer: Chevron		Job Date: 01-05-09		Ticket #: 6422576	
Truck #	Elite # 9	Operator	Rick Edwards	ADC USED	YES
Cementor	Dirk Hayes	Co Rep	Ed Doherty	Lease	skr598-36-bv-13