
CHEVRON - MID-CONTINENT EBIZ

**SKR 598-36-BV-12
SKINNER RIDGE
Garfield County , Colorado**

Cement Surface Casing
06-Mar-2009

Job Site Documents

The Road to Excellence Starts with Safety

Sold To #: 338668	Ship To #: 2695487	Quote #:	Sales Order #: 6543966
Customer: CHEVRON - MID-CONTINENT EBIZ		Customer Rep: DOHERTY, ED	
Well Name: SKR	Well #: 598-36-BV-12	API/UWI #: 05-045-16943	
Field: SKINNER RIDGE	City (SAP): PARACHUTE	County/Parish: Garfield	State: Colorado
Lat: N 39.567 deg. OR N 39 deg. 33 min. 59.951 secs.		Long: W 108.347 deg. OR W -109 deg. 39 min. 12.323 secs.	
Contractor: H&P 316	Rig/Platform Name/Num: H&P 316		
Job Purpose: Cement Surface Casing			
Well Type: Development Well		Job Type: Cement Surface Casing	
Sales Person: DUNNING, DUSTIN	Srvc Supervisor: DEROSA, JAY	MBU ID Emp #: 338788	

Job Personnel

HES Emp Name	Exp Hrs	Emp #	HES Emp Name	Exp Hrs	Emp #	HES Emp Name	Exp Hrs	Emp #
ANGLESTEIN, TROY Edward WM Smith, Chris		436099	DEROSA, JAY M Thomas Ponder		338788	MASON, KYLE T		426148

Equipment

HES Unit #	Distance-1 way	HES Unit #	Distance-1 way	HES Unit #	Distance-1 way	HES Unit #	Distance-1 way
10616651C	120 mile	10829466	120 mile	10867425	120 mile		

Job Hours

Date	On Location Hours	Operating Hours	Date	On Location Hours	Operating Hours	Date	On Location Hours	Operating Hours
3-6-09	7	1						

TOTAL Total is the sum of each column separately

Job

Job Times

Formation Name	Top	Bottom	Called Out	Date	Time	Time Zone
Formation Depth (MD)			On Location	06 - Mar - 2009	00:00	MST
Form Type		BHST	Job Started	06 - Mar - 2009	07:14	MST
Job depth MD	1054. ft	Job Depth TVD	Job Completed	06 - Mar - 2009	08:05	MST
Water Depth		Wk Ht Above Floor	Departed Loc	06 - Mar - 2009	10:00	MST
Perforation Depth (MD)	From	To				

Well Data

Description	New / Used	Max pressure psig	Size in	ID in	Weight lbm/ft	Thread	Grade	Top MD ft	Bottom MD ft	Top TVD ft	Bottom TVD ft
OPEN HOLE				12.25					1054.		1054.
SURFACE CASING	Unknown		8.625	8.097	24.		J-55		1034.		1034.

Sales/Rental/3rd Party (HES)

Description	Qty	Qty uom	Depth	Supplier
PORT. DAS W/CEMWIN;ACQUIRE W/HES, ZI	1	JOB		
ADC (AUTO DENSITY CTRL) SYS, /JOB,ZI	1	JOB		
PLUG,CMTG, TOP, 8 5/8, HWE, 7.20 MIN/8.09 MA	1	EA		

Tools and Accessories

Type	Size	Qty	Make	Depth	Type	Size	Qty	Make	Depth	Type	Size	Qty	Make
Guide Shoe					Packer					Top Plug	8 5/8	1	
Float Shoe					Bridge Plug					Bottom Plug			
Float Collar					Retainer					SSR plug set			
Insert Float										Plug Container	8 5/8	1	
Stage Tool										Centralizers			

Miscellaneous Materials

Gelling Agt	Conc	Surfactant	Conc	Acid Type	Qty	Conc	%
Treatment Fld	Conc	Inhibitor	Conc	Sand Type	Size	Conc	Qty

Fluid Data									
Stage/Plug #: 1									
Fluid #	Stage Type	Fluid Name	Qty	Qty uom	Mixing Density lbm/gal	Yield ft ³ /sk	Mix Fluid Gal/sk	Rate bbl/min	Total Mix Fluid Gal/sk
1	Dye Spacer with PolyFlake		30	bbl	8.33	.0	.0	.0	
2	Lead Cement	VERSACEM (TM) SYSTEM (452010)	133	sacks	12.3	2.38	13.75		
	2 %	CAL-SEAL 60, 50 LB BAG (101217146)							
	2 %	ECONOLITE (100001580)							
	0.3 %	VERSASET, 55 LB SK (101376573)							
	5.64 lbm	SALT, 100 LB BAG (100003652)							
	0.125 lbm	POLY-E-FLAKE (101216940)							
	0.25 %	D-AIR 3000 (101007446)							
	13.75 Gal	FRESH WATER							
3	Tail Cement	VERSACEM (TM) SYSTEM (452010)	135	sacks	12.8	2.11	11.75		
	2 %	CAL-SEAL 60, 50 LB BAG (101217146)							
	2 %	ECONOLITE (100001580)							
	0.3 %	VERSASET, 55 LB SK (101376573)							
	5.64 lbm	SALT, 100 LB BAG (100003652)							
	11.75 Gal	FRESH WATER							
4	Displacement		63.1	bbl	8.33	.0	.0	.0	
Calculated Values		Pressures			Volumes				
Displacement	63.1	Shut In: Instant		Lost Returns	no	Cement Slurry	107.1	Pad	
Top Of Cement	Surface	5 Min		Cement Returns	14bbbls	Actual Displacement	63.1	Treatment	
Frac Gradient		15 Min		Spacers	30bbbls	Load and Breakdown		Total Job	
Rates									
Circulating	Rig	Mixing	7	Displacement	10	Avg. Job			
Cement Left In Pipe	Amount	42 ft	Reason	Shoe Joint					
Frac Ring # 1 @	ID	Frac ring # 2 @	ID	Frac Ring # 3 @	ID	Frac Ring # 4 @	ID		
The Information Stated Herein Is Correct				Customer Representative Signature					

The Road to Excellence Starts with Safety

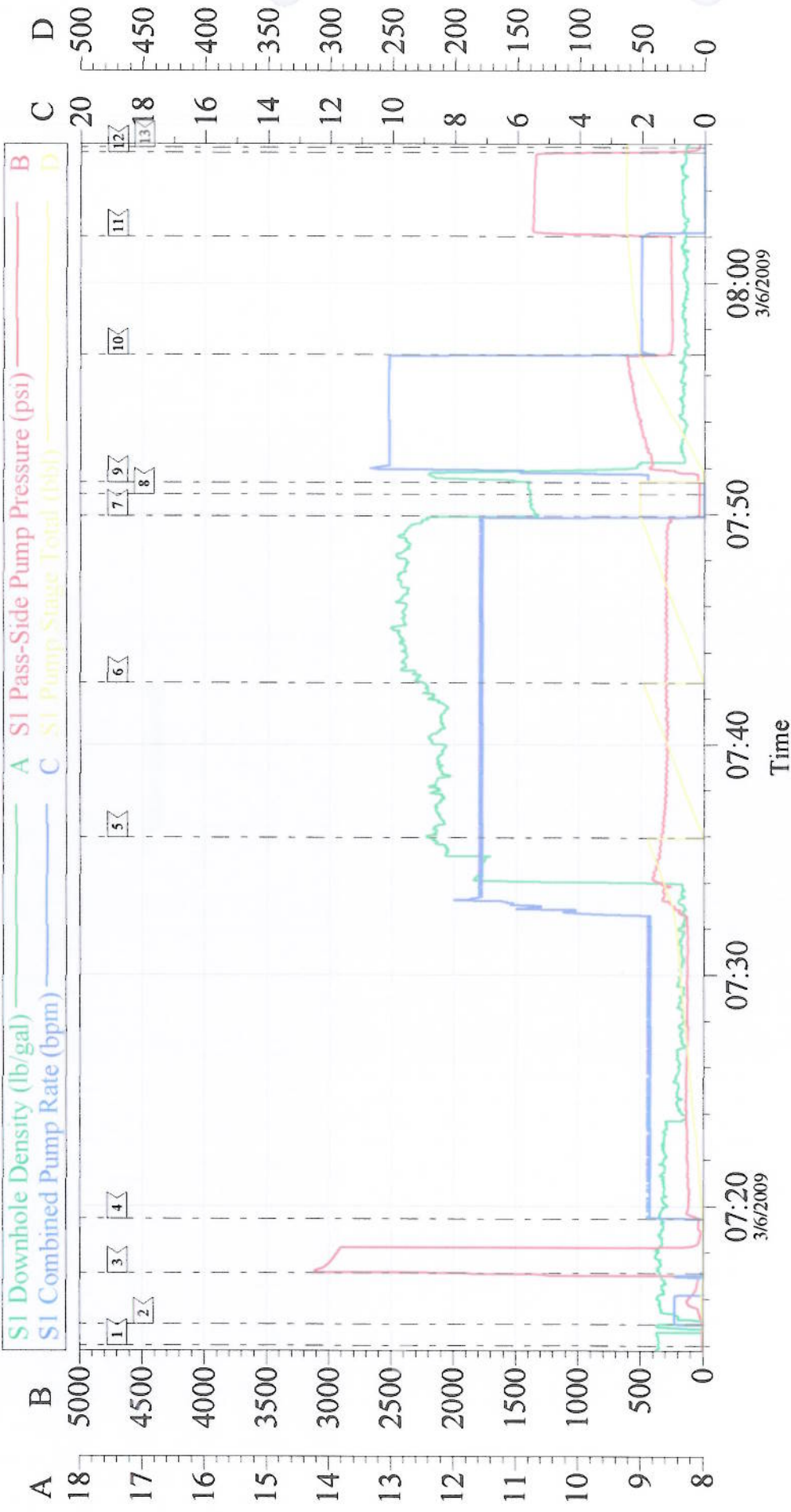
Sold To #: 338668	Ship To #: 2695487	Quote #:	Sales Order #: 6543966
Customer: CHEVRON - MID-CONTINENT EBIZ		Customer Rep: DOHERTY, ED	
Well Name: SKR	Well #: 598-36-BV-12	API/UWI #: 05-045-16943	
Field: SKINNER RIDGE	City (SAP): PARACHUTE	County/Parish: Garfield	State: Colorado
Legal Description:			
Lat: N 39.567 deg. OR N 39 deg. 33 min. 59.951 secs.		Long: W 108.347 deg. OR W -109 deg. 39 min. 12.323 secs.	
Contractor: H&P 316	Rig/Platform Name/Num: H&P 316		
Job Purpose: Cement Surface Casing			Ticket Amount:
Well Type: Development Well		Job Type: Cement Surface Casing	
Sales Person: DUNNING, DUSTIN	Srv Supervisor: DEROSA, JAY	MBU ID Emp #: 338788	

Activity Description	Date/Time	Cht #	Rate bbl/min	Volume bbl		Pressure psig		Comments
				Stage	Total	Tubing	Casing	
Call Out	03/05/2009 20:00							
Pre-Convoy Safety Meeting	03/05/2009 22:00							
Arrive At Loc	03/06/2009 00:00							
Pre-Rig Up Safety Meeting	03/06/2009 00:15							
Rig-Up Equipment	03/06/2009 00:16							
Wait on Customer or Customer Sub-Contractor Equip	03/06/2009 01:00							Rig running casing.
Wait on Customer or Customer Sub-Contractor Equipm	03/06/2009 07:00							
Pre-Job Safety Meeting	03/06/2009 07:00							
Start Job	03/06/2009 07:14	1						
Pump Water	03/06/2009 07:14	2	1				100.0	Fill lines
Test Lines	03/06/2009 07:17	3					3100.0	
Pump Spacer	03/06/2009 07:19	4	2	30			115.0	H2O Spacer with Red Dye and Poly-E-Flake 6x5 pressure @ 10 PSI
Pump Lead Cement	03/06/2009 07:35	5	7	56.4			338.0	133 sks @ 12.3 ppg 2.38 ft3/sk 13.75 gal/sk 6x5 pressure @ 13 PSI
Pump Tail Cement	03/06/2009 07:42	6	7	50.7			309.0	135 sks @ 12.8 ppg 2.11 ft3/sk 11.75 gal/sk 6x5 pressure @ 14 PSI
Shutdown	03/06/2009 07:49	7						

Activity Description	Date/Time	Cht #	Rate bbl/min	Volume bbl		Pressure psig		Comments
				Stage	Total	Tubing	Casing	
Drop Plug	03/06/2009 07:50	8						
Pump Displacement	03/06/2009 07:51	9	10				414.0	Fresh Water
Slow Rate	03/06/2009 07:56	10	2	53			258.0	
Bump Plug	03/06/2009 08:02	11	2	63.1			1377.0	Plug Down.
Check Floats	03/06/2009 08:05	12						Floats held. Good returns throughout entire job. Pipe was not reciprocated during job. 14 bbls cement to surface.
End Job	03/06/2009 08:05	13						Thanks for using Halliburton, Jay DeRosa and crew.
Post-Job Safety Meeting (Pre Rig-Down)	03/06/2009 08:15							
Rig-Down Completed	03/06/2009 08:30							
Pre-Convoy Safety Meeting	03/06/2009 10:00							
Depart Location for Service Center or Other Site	03/06/2009 10:00							

Signature _____

Chevron 8 5/8" Surface



Local Event Log	
1 Start Job	07:14:00
2 Pump Ahead	07:14:55
3 Test Lines	07:17:06
4 Pump Dyed Pol-E-Flake Spacer	07:19:27
5 Pump Lead	07:35:57
6 Pump Tail	07:42:41
7 Shut Down	07:49:55
8 Drop Plug	07:50:52
9 Start Displacement	07:50:52
10 Slow Rate	08:02:02
11 Bump Plug	08:02:02
12 Check Floats	08:05:39
13 End Job	08:05:51

Customer:	Chevron	Job Date:	06-Mar-2009	Sales Order #:	6543966
Well Description:	SKR-598-36-BV-12	Job Type:	8 5/8" Surface	ADC Used:	YES
Company Rep:	Ronnie Moeller	Cement Supervisor:	Jay DeRosa	Elite #/Operator	4/Tomas Ponder