

---

# CHEVRON - MID-CONTINENT EBIZ

---

SKR 598-36-BV-09  
SKINNER RIDGE  
Garfield County , Colorado

## Cement Surface Casing

07-Jan-2009

### Job Site Documents

### The Road to Excellence Starts with Safety

Sold To #: 338668	Ship To #: 2695483	Quote #:	Sales Order #: 6426013
Customer: CHEVRON - MID-CONTINENT EBIZ		Customer Rep: DOHERTY, ED	
Well Name: SKR		Well #: 598-36-BV-09	API/UWI #: 05-045-16935
Field: SKINNER RIDGE	City (SAP): PARACHUTE	County/Parish: Garfield	State: Colorado
Lat: N 39.567 deg. OR N 39 deg. 34 min. 0.026 secs.		Long: W 108.347 deg. OR W -109 deg. 39 min. 12.172 secs.	
Contractor: H&P 316		Rig/Platform Name/Num: H&P 316	
Job Purpose: Cement Surface Casing			
Well Type: Development Well		Job Type: Cement Surface Casing	
Sales Person: DUNNING, DUSTIN		Srvc Supervisor: STILLSON, ERIC	MBU ID Emp #: 393789

### Job Personnel

HES Emp Name	Exp Hrs	Emp #	HES Emp Name	Exp Hrs	Emp #	HES Emp Name	Exp Hrs	Emp #
BANKS, BRENT A	11	371353	LITTLE, FRANKLIN D	11	448361	LUNCEFORD, STEVEN John	11	457512
REEVES, BRANDON W	11	287883	STILLSON, ERIC W	11	393789			

### Equipment

HES Unit #	Distance-1 way	HES Unit #	Distance-1 way	HES Unit #	Distance-1 way	HES Unit #	Distance-1 way
10297346	120 mile	10719776	120 mile	10822535	120 mile	10829463	120 mile
10871245	120 mile	11071559	120 mile				

### Job Hours

Date	On Location Hours	Operating Hours	Date	On Location Hours	Operating Hours	Date	On Location Hours	Operating Hours
01-07-09	11	1						
TOTAL			Total is the sum of each column separately					

### Job

Formation Name	Top	Bottom	Called Out	Date	Time	Time Zone
Formation Depth (MD)			On Location	07 - Jan - 2009	04:00	MST
Form Type	BHST		Job Started	07 - Jan - 2009	08:00	MST
Job depth MD	1337. ft	Job Depth TVD	Job Completed	07 - Jan - 2009	18:17	MST
Water Depth		Wk Ht Above Floor	Departed Loc	07 - Jan - 2009	19:08	MST
Perforation Depth (MD)	From	To		07 - Jan - 2009	21:00	MST

### Well Data

Description	New / Used	Max pressure psig	Size in	ID in	Weight lbm/ft	Thread	Grade	Top MD ft	Bottom MD ft	Top TVD ft	Bottom TVD ft
open hole				12.25				.0	1380.	.0	1380.
surface casing	New		8.625	8.097	24.		J-55	.0	1337.	.0	1337.

### Sales/Rental/3<sup>rd</sup> Party (HES)

Description	Qty	Qty uom	Depth	Supplier
PLUG,CMTG,TOP,8 5/8,HWE,7.20 MIN/8.09 MA	1	EA		

### Tools and Accessories

Type	Size	Qty	Make	Depth	Type	Size	Qty	Make	Depth	Type	Size	Qty	Make
Guide Shoe					Packer					Top Plug	8.625	1	
Float Shoe					Bridge Plug					Bottom Plug			
Float Collar					Retainer					SSR plug set			
Insert Float										Plug Container	8.625	1	
Stage Tool										Centralizers			

### Miscellaneous Materials

Gelling Agt	Conc	Surfactant	Conc	Acid Type	Qty	Conc	%
Treatment Fld	Conc	Inhibitor	Conc	Sand Type	Size		Qty

Fluid Data									
Stage/Plug #: 1									
Fluid #	Stage Type	Fluid Name	Qty	Qty uom	Mixing Density lbm/gal	Yield ft <sup>3</sup> /sk	Mix Fluid Gal/sk	Rate bbl/min	Total Mix Fluid Gal/sk
1	Dye Spacer with PolyFlake		30.00	bbl	8.33	.0	.0	4	
2	Lead Cement	VERSACEM (TM) SYSTEM (452010)	208.0	sacks	12.3	2.38	13.75	7	
	2 %	CAL-SEAL 60, 50 LB BAG (101217146)							
	2 %	ECONOLITE (100001580)							
	0.3 %	VERSASET, 55 LB SK (101376573)							
	5.64 lbm	SALT, 100 LB BAG (100003652)							
	0.125 lbm	POLY-E-FLAKE (101216940)							
	0.25 %	D-AIR 3000 (101007446)							
	13.75 Gal	FRESH WATER							
3	Tail Cement	VERSACEM (TM) SYSTEM (452010)	134.0	sacks	12.8	2.11	11.75	7	
	2 %	CAL-SEAL 60, 50 LB BAG (101217146)							
	2 %	ECONOLITE (100001580)							
	0.3 %	VERSASET, 55 LB SK (101376573)							
	5.64 lbm	SALT, 100 LB BAG (100003652)							
	11.75 Gal	FRESH WATER							
4	Displacement		82.00	bbl	8.33	.0	.0	7	
Calculated Values		Pressures		Volumes					
Displacement	82.1	Shut In: Instant		Lost Returns	0	Cement Slurry	138	Pad	
Top Of Cement	SURFACE	5 Min		Cement Returns	15	Actual Displacement	82	Treatment	
Frac Gradient		15 Min		Spacers	30	Load and Breakdown		Total Job	
Rates									
Circulating	RIG	Mixing	7	Displacement	7	Avg. Job	7		
Cement Left In Pipe	Amount	46.7 ft	Reason	Shoe Joint					
Frac Ring # 1 @	ID	Frac ring # 2 @	ID	Frac Ring # 3 @	ID	Frac Ring # 4 @	ID		
The Information Stated Herein Is Correct				Customer Representative Signature					



*The Road to Excellence Starts with Safety*

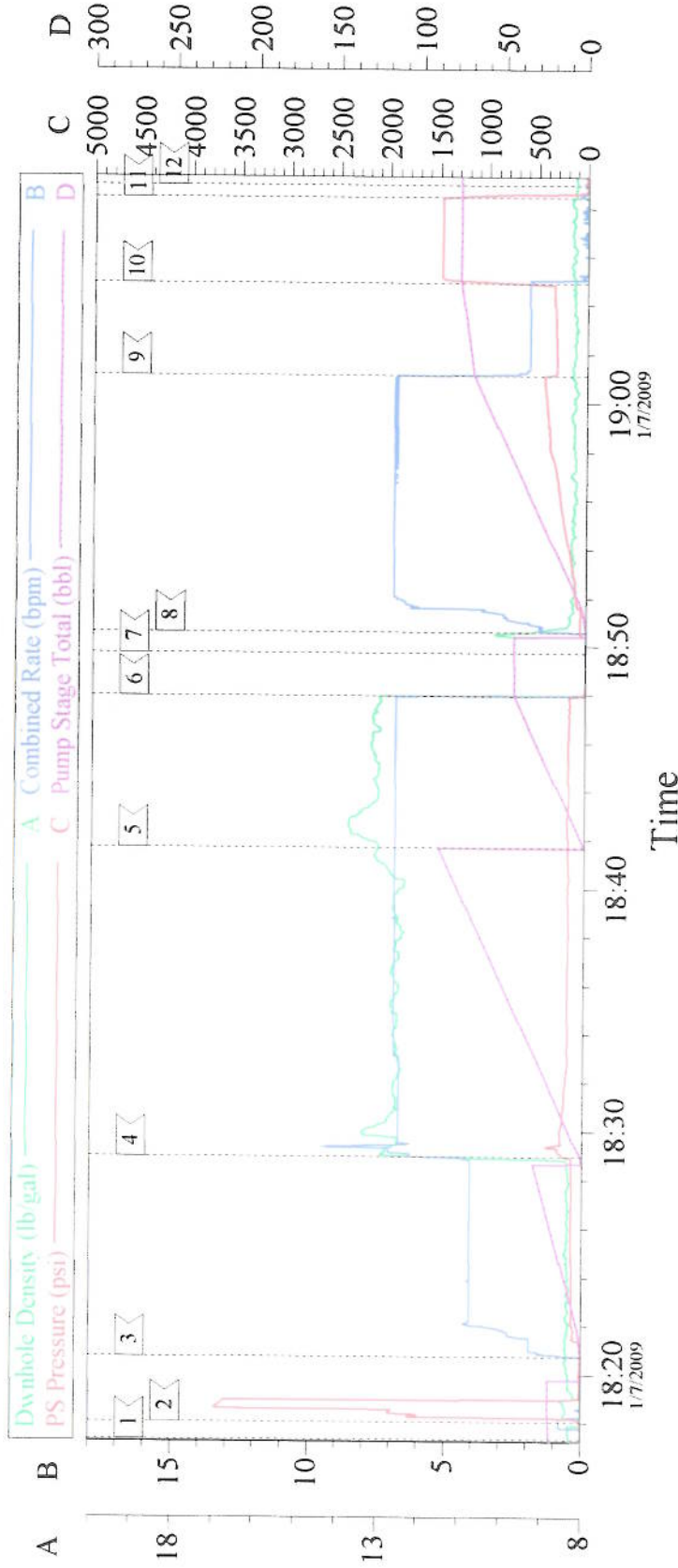
Sold To #: 338668	Ship To #: 2695483	Quote #:	Sales Order #: 6426013
Customer: CHEVRON - MID-CONTINENT EBIZ	Customer Rep: DOHERTY, ED		
Well Name: SKR	Well #: 598-36-BV-09	API/UWI #: 05-045-16935	
Field: SKINNER RIDGE	City (SAP): PARACHUTE	County/Parish: Garfield	State: Colorado
Legal Description:			
Lat: N 39.567 deg. OR N 39 deg. 34 min. 0.026 secs.		Long: W 108.347 deg. OR W -109 deg. 39 min. 12.172 secs.	
Contractor: H&P 316	Rig/Platform Name/Num: H&P 316		
Job Purpose: Cement Surface Casing	Ticket Amount:		
Well Type: Development Well	Job Type: Cement Surface Casing		
Sales Person: DUNNING, DUSTIN	Srv Supervisor: STILLSON, ERIC	MBU ID Emp #: 393789	

Activity Description	Date/Time	Cht #	Rate bbl/min	Volume bbl		Pressure psig		Comments
				Stage	Total	Tubing	Casing	
Call Out	01/07/2009 04:00							
Pre-Convoy Safety Meeting	01/07/2009 06:30							ENTIRE CREW
Arrive At Loc	01/07/2009 08:00							ON TIME
Assessment Of Location Safety Meeting	01/07/2009 08:05							RIG RUNNING CASING, THIS IS AN OFFLINE JOB, AFTER RIG IS DONE WITH CASING THEY WILL SKID TO NEXT WELL THEN WE WILL RIG UP.
Pre-Rig Up Safety Meeting	01/07/2009 16:45							ENTIRE CREW
Rig-Up Equipment	01/07/2009 17:00							1 PICK UP, 1 HT400 PUMP TRUCK, 1 660 BULK CEMENT TRUCK, 1 OFFLINE CEMENT HEAD (SCREW IN)
Pre-Job Safety Meeting	01/07/2009 17:30							ENTIRE CREW AND RIG CREW
Start Job	01/07/2009 18:17							TD 1380 TP 1337 SJ 46.7 FC 1290.3 MW 9.2#
Pressure Test	01/07/2009 18:18		0.5				3700.0	PRESSURE HELD NO LEAKS
Pump Spacer 1	01/07/2009 18:20		4	30			112.0	FRESH WATER WITH RED DYE AND 1 BAG POLYFLAKE, SPED TO 7 BPM AS WE WENT TO LEAD CEMENT

## Cementing Job Log

Activity Description	Date/Time	Cht #	Rate bbl/min	Volume bbl		Pressure psig		Comments
				Stage	Total	Tubing	Casing	
Pump Lead Cement	01/07/2009 18:28		7	88.2			226.0	208 SKS VERSACEM 12.3# YIELD 2.38 WATER REQ 13.75,
Pump Tail Cement	01/07/2009 18:41		7	50.4			160.0	134 SKS VERSACEM 12.8# YIELD 2.11 WATER REQ 11.75
Shutdown	01/07/2009 18:47							
Drop Top Plug	01/07/2009 18:49							VERIFIED PLUG LEFT
Pump Displacement	01/07/2009 18:50		7	82.1			434.0	FRESH WATER, CAUGHT PRESSURE AT 10 BBL GONE
Slow Rate	01/07/2009 19:01		2	72			410.0	SLOW RATE TO BUMP PLUG
Bump Plug	01/07/2009 19:04		2	82.1			1479.0	PLUG LANDED, BUMPED 1000 PSI OVER PER CO REP.
Check Floats	01/07/2009 19:08							FLOATS HELD, WHEN RELEASED PRESSURE 1 BBL OF WATER CAME BACK TO TRUCK
End Job	01/07/2009 19:08							GOOD RETURNS THROUGHOUT, PIPE NOT RECIPROCATED, CEMENT TO SURFACE AT 67 GONE ON DISPLACEMENT, 15 BBLs OF CEMENT TO SURFACE
Post-Job Safety Meeting (Pre Rig-Down)	01/07/2009 19:10							ENTIRE CREW
Rig-Down Equipment	01/07/2009 19:15							
Pre-Convoy Safety Meeting	01/07/2009 19:55							ENTIRE CREW
Crew Leave Location	01/07/2009 21:00							THANK YOU FOR USING HALLIBURTON, ERIC STILLSON AND CREW

# CHEVRON 8 5/8 SURFACE



## Event Log

1	START JOB	18:17:21	2	TEST LINES	18:18:03	3	POLYFLAKE SPACER	18:20:44
4	LEAD CEMENT	18:28:57	5	TAIL CEMENT	18:41:41	6	SHUTDOWN	18:47:56
7	DROP PLUG	18:49:43	8	H2O DISPLACEMENT	18:50:34	9	SLOW RATE	19:01:09
10	BUMP PLUG	19:04:54	11	CHECK FLOATS	19:08:25	12	END JOB	19:08:55

Customer:	CHEVRON	Job Date:	01-07-09	Ticket #:	6426013
Well Desc:	SKR 598-36-BV-09	JOB TYPE:	SURFACE	ADC:	YES
COMPANY REP:	ED DOHERTY	CEMENTER:	ERIC STILLSON	OPERATOR/PUMP TRUCK:	FRANK LITTLE/ ELITE #8

CemWin v1.7.2  
07-Jan-09 20:10