
CHEVRON - MID-CONTINENT EBIZ

**SKR 598-36-BV-04
SKINNER RIDGE
Garfield County , Colorado**

Cement Production Casing
07-Apr-2009

Job Site Documents

The Road to Excellence Starts with Safety

Sold To #: 338668	Ship To #: 2695478	Quote #:	Sales Order #: 6585538
Customer: CHEVRON - MID-CONTINENT EBIZ		Customer Rep: DOHERTY, ED	
Well Name: SKR	Well #: 598-36-BV-04	API/UWI #:	
Field: SKINNER RIDGE	City (SAP): PARACHUTE	County/Parish: Garfield	State: Colorado
Contractor: H&P 316	Rig/Platform Name/Num: H&P316		
Job Purpose: Cement Production Casing			
Well Type: Development Well		Job Type: Cement Production Casing	
Sales Person: DUNNING, DUSTIN	Srv Supervisor: ANDREWS, ANTHONY	MBU ID Emp #: 321604	

Job Personnel

HES Emp Name	Exp Hrs	Emp #	HES Emp Name	Exp Hrs	Emp #	HES Emp Name	Exp Hrs	Emp #
ANDREWS, ANTHONY Michael		321604	DUBOIS, ISAAC Charles		456690	HAMMOND, DENNIS C		287025
SAUTER, MARK A		410526	SMITH, CHRISTOPHER Scott		452619	VANALSTYNE, TROY L		420256

Equipment

HES Unit #	Distance-1 way	HES Unit #	Distance-1 way	HES Unit #	Distance-1 way	HES Unit #	Distance-1 way

Job Hours

Date	On Location Hours	Operating Hours	Date	On Location Hours	Operating Hours	Date	On Location Hours	Operating Hours
4/7/09	7	4						
TOTAL			Total is the sum of each column separately					

Job

Formation Name	Formation Depth (MD)	Top	Bottom	Form Type	Job depth MD	Job Depth TVD	Wk Ht Above Floor	Perforation Depth (MD)	From	To
				BHST	6431. ft	6431. ft	4. ft			
				Job Times						
				Date	Time	Time Zone				
				Called Out	07 - Apr - 2009	02:00	MST			
				On Location	07 - Apr - 2009	06:30	MST			
				Job Started	07 - Apr - 2009	10:25	MST			
				Job Completed	07 - Apr - 2009	11:51	MST			
				Departed Loc	07 - Apr - 2009	14:00	MST			

Well Data

Description	New / Used	Max pressure Psig	Size in	ID in	Weight lbm/ft	Thread	Grade	Top MD ft	Bottom MD ft	Top TVD ft	Bottom TVD ft
-------------	------------	-------------------	---------	-------	---------------	--------	-------	-----------	--------------	------------	---------------

Sales/Rental/3rd Party (HES)

Description	Qty	Qty uom	Depth	Supplier
PLUG, CMTG, TOP, 4 1/2, HWE, 3.65 MIN/4.14 MA	1	EA		
ADC (AUTO DENSITY CTRL) SYS, /JOB, ZI	1	JOB		
PORT. DAS W/CEMWIN, ACQUIRE W/HES, ZI	1	JOB		

Tools and Accessories

Type	Size	Qty	Make	Depth	Type	Size	Qty	Make	Depth	Type	Size	Qty	Make
Guide Shoe					Packer					Top Plug			
Float Shoe					Bridge Plug					Bottom Plug			
Float Collar					Retainer					SSR plug set			
Insert Float										Plug Container			
Stage Tool										Centralizers			

Miscellaneous Materials

Gelling Agt	Conc	Surfactant	Conc	Acid Type	Qty	Conc	%
Treatment Fld	Conc	Inhibitor	Conc	Sand Type	Size	Qty	

Fluid Data									
Stage/Plug #: 1									
Fluid #	Stage Type	Fluid Name	Qty	Qty uom	Mixing Density lbm/gal	Yield ft ³ /sk	Mix Fluid Gal/sk	Rate bbl/min	Total Mix Fluid Gal/sk
1	Dyed Polyflake Spacer		50	bbl	8.33	.0	.0	.0	
2	Lead Cement	VARICEM (TM) CEMENT (452009)	394	sacks	12.8	1.6	7.31		
3	Tail Cement	VARICEM (TM) CEMENT (452009)	646	sacks	13.2	1.47	6.32		
4	KCL DISPLACEMENT		99	bbl	8.4	.0	.0	.0	
Calculated Values		Pressures		Volumes					
Displacement	99	Shut In: Instant		Lost Returns	N	Cement Slurry	281.1	Pad	
Top Of Cement	SURFACE	5 Min		Cement Returns	N	Actual Displacement	99	Treatment	
Frac Gradient		15 Min		Spacers	50	Load and Breakdown		Total Job	430.1
Rates									
Circulating	RIG	Mixing	7	Displacement	8-2	Avg. Job	7		
Cement Left In Pipe	Amount	47 ft	Reason	Shoe Joint					
Frac Ring # 1 @	ID	Frac ring # 2 @	ID	Frac Ring # 3 @	ID	Frac Ring # 4 @	ID		
The Information Stated Herein Is Correct				Customer Representative Signature					

The Road to Excellence Starts with Safety

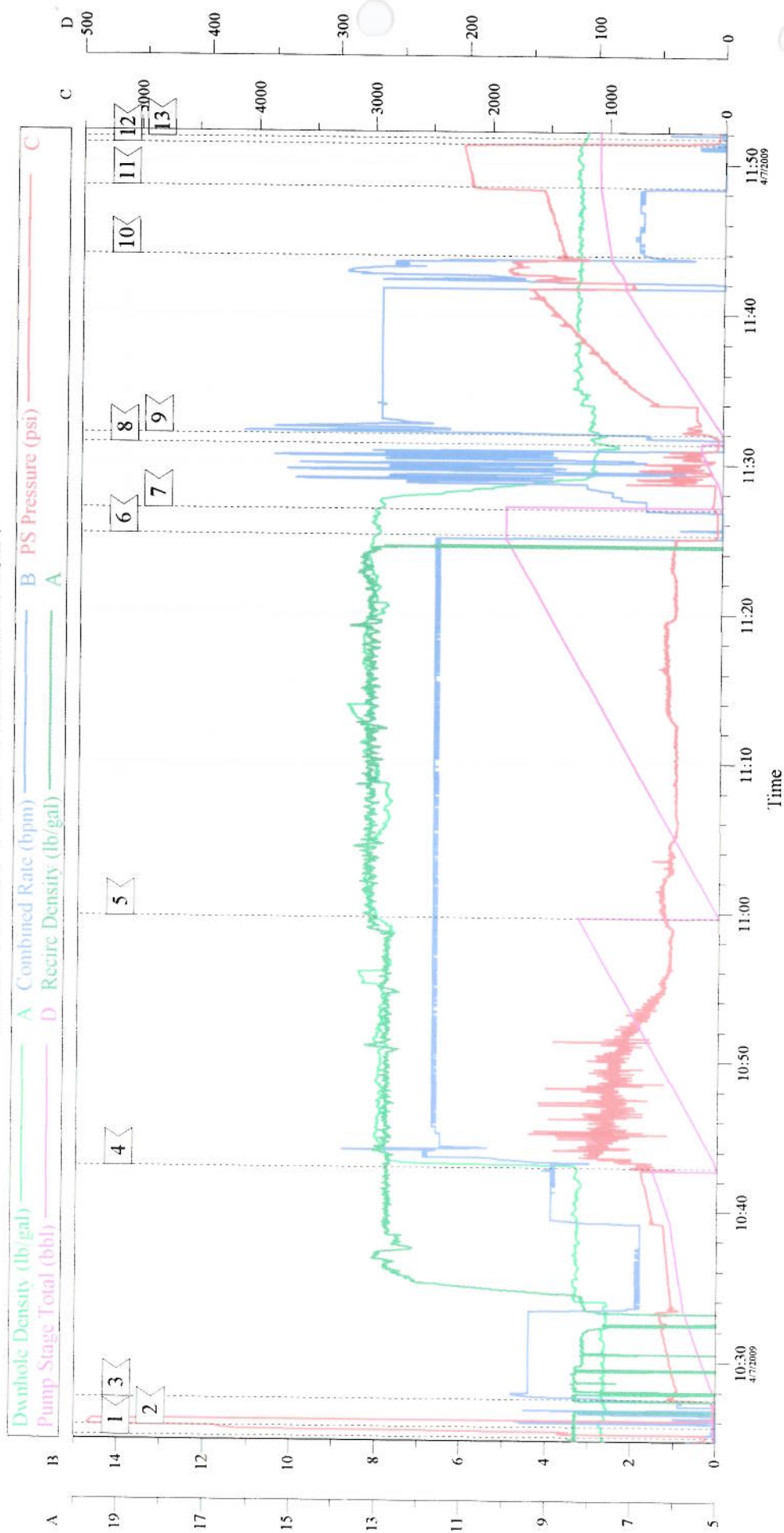
Sold To #: 338668		Ship To #: 2695478		Quote #:		Sales Order #: 6585538	
Customer: CHEVRON - MID-CONTINENT EBIZ				Customer Rep: DOHERTY, ED			
Well Name: SKR		Well #: 598-36-BV-04		API/UWI #:			
Field: SKINNER RIDGE		City (SAP): PARACHUTE		County/Parish: Garfield		State: Colorado	
Legal Description:							
Lat:				Long:			
Contractor: H&P 316		Rig/Platform Name/Num: H&P316					
Job Purpose: Cement Production Casing				Ticket Amount:			
Well Type: Development Well		Job Type: Cement Production Casing					
Sales Person: DUNNING, DUSTIN		Srvc Supervisor: ANDREWS, ANTHONY			MBU ID Emp #: 321604		

Activity Description	Date/Time	Cht #	Rate bbl/min	Volume bbl		Pressure psig		Comments
				Stage	Total	Tubing	Casing	
Call Out	04/07/2009 02:00							
Pre-Convoy Safety Meeting	04/07/2009 03:15							
Crew Leave Yard	04/07/2009 03:30							
Arrive At Loc	04/07/2009 06:30							
Assessment Of Location Safety Meeting	04/07/2009 06:40							
Other	04/07/2009 06:45							SPOT EQUIPMENT
Pre-Rig Up Safety Meeting	04/07/2009 06:50							
Rig-Up Equipment	04/07/2009 06:55							
Pre-Job Safety Meeting	04/07/2009 10:00							
Start Job	04/07/2009 10:25							TD: 6457 TP: 6431 SJ: 47 MW: 10.7PPG 4.5" 11.6#/FT CASING
Test Lines	04/07/2009 10:25							5000 PSI TEST
Pump Spacer	04/07/2009 10:27		4	50			377.0	25 W/ POLYFLAKE 25 FRESH
Pump Lead Cement	04/07/2009 10:42		7	112.3			744.0	394 SKS @ 12.8PPG 1.6YLD
Pump Tail Cement	04/07/2009 10:59		7	169.1			485.0	646 SKS @ 13.2PPG 1.47YLD
Shutdown	04/07/2009 11:25							
Clean Lines	04/07/2009 11:26							
Drop Plug	04/07/2009 11:31							

Cementing Job Log

Activity Description	Date/Time	Cht #	Rate bbl/ min	Volume bbl		Pressure psig		Comments
				Stage	Total	Tubing	Casing	
Pump Displacement	04/07/2009 11:31		8		99		247.0	
Slow Rate	04/07/2009 11:43		2	85			1359. 0	
Bump Plug	04/07/2009 11:48		2	99			2160. 0	
Check Floats	04/07/2009 11:51							
End Job	04/07/2009 11:51							GOOD CIRCULATION THROUGHOUT JOB. PIPE WAS LEFT STATIC THROUGHOUT JOB. PLUG BUMPED AT CALCULATED DISPLACEMENT. NO ADD HOURS CHARGED.
Post-Job Safety Meeting (Pre Rig-Down)	04/07/2009 12:00							MARK SAUTER WAS DESIGNATED SAFETY OBSERVER FOR JOB.
Rig-Down Equipment	04/07/2009 12:30							
Pre-Convoy Safety Meeting	04/07/2009 13:50							
Crew Leave Location	04/07/2009 14:00							THANK YOU FOR CHOOSING HALLIBURTON CEMENTING OF GRAND JUNCTION, COLORADO ANTHONY ANDREWS AND CREW

CHEVRON 4 1/2" PRODUCTION



Intersection		Event Log		Intersection							
	Intersection	pp	Intersection	pp	Intersection						
1	START JOB	10:25:00	88.00	2	TEST LINES	10:25:40	531.3	3	PUMP SPACER	10:27:30	377.4
4	PUMP LEAD CEMENT	10:42:54	744.9	5	PUMP TAIL CEMENT	10:59:37	485.2	6	SHUTDOWN	11:25:15	44.58
7	CLEAN LINES	11:26:58	71.83	8	DROP PLUG	11:31:19	43.81	9	PUMP DISPLACEMENT	11:31:58	97.76
10	SLOW RATE	11:43:51	1359	11	BUMP PLUG	11:48:27	2160	12	CHECK FLOATS	11:51:18	1367
13	END JOB	11:51:43	57.00								

Customer: CHEVRON	Job Date: 4/7/09	Ticket #: 6585538
Lease: SKR	Supervisor: ANTHONY ANDREWS	ADC Used?: YES
Well #: 598-36-BV-04	Pump Truck: 10296148	ED DOHERTY