

**CHEVRON - MID-CONTINENT EBIZ  
11111 S WILCREST DR - DO NOT MAIL  
HOUSTON, Texas**

SKR  
SKR 598-36-BV-04

**H&P 316/H&P/316**

## **Post Job Summary**

# **Cement Surface Casing**

Prepared for:  
Date Prepared:  
Version: 1

*Service Supervisor: FEUERBORN, JOHN*

Submitted by:

**HALLIBURTON**

## The Road to Excellence Starts with Safety

Sold To #: 338668		Ship To #: 2695478		Quote #:		Sales Order #: 6531039	
Customer: CHEVRON - MID-CONTINENT EBIZ				Customer Rep: MOLLER, RONNIE			
Well Name: SKR			Well #: 598-36-BV-04			API/UWI #: 05-045-16944	
Field: PICEANCE		City (SAP): PARACHUTE		County/Parish: Garfield		State: Colorado	
Lat: N 39.567 deg. OR N 39 deg. 34 min. 0.271 secs.				Long: W 108.347 deg. OR W -109 deg. 39 min. 12.186 secs.			
Contractor: H&P 316			Rig/Platform Name/Num: H&P 316				
Job Purpose: Cement Surface Casing							
Well Type: Development Well			Job Type: Cement Surface Casing				
Sales Person: DUNNING, DUSTIN			Srvc Supervisor: FEUERBORN, JOHN			MBU ID Emp #: 381677	

## Job Personnel

HES Emp Name	Exp Hrs	Emp #	HES Emp Name	Exp Hrs	Emp #	HES Emp Name	Exp Hrs	Emp #
BRANDON, BRADLEY Vernon	4	353157	FEUERBORN, JOHN William	4	381677	HENSLEY, JASON Paul	4	447332
JONES, CHRISTOPHER E	4	343111	TRIPLETT, MICHEAL Anthony	4	447908			

## Equipment

HES Unit #	Distance-1 way	HES Unit #	Distance-1 way	HES Unit #	Distance-1 way	HES Unit #	Distance-1 way
10719771	120 mile	10857016	120 mile	10867423	120 mile	10872113	120 mile
10897887	120 mile						

## Job Hours

Date	On Location Hours	Operating Hours	Date	On Location Hours	Operating Hours	Date	On Location Hours	Operating Hours
TOTAL			Total is the sum of each column separately					

## Job

Formation Name	Job	Job Times
Formation Depth (MD) Top	Bottom	Date Time Time Zone
Form Type	BHST	Called Out
Job depth MD	1050. ft	On Location
Water Depth	Wk Ht Above Floor	Job Started
Perforation Depth (MD) From	To	Job Completed
		Departed Loc

## Well Data

Description	New / Used	Max pressure psig	Size in	ID in	Weight lbm/ft	Thread	Grade	Top MD ft	Bottom MD ft	Top TVD ft	Bottom TVD ft
Open Hole				12.25					1050.		1050.
Surface Casing	Unknown		8.625	8.097	24.				1050.		1050.

Sales/Rental/3<sup>rd</sup> Party (HES)

Description	Qty	Qty uom	Depth	Supplier
PLUG,CMTG,TOP,8 5/8,HVVE,7.20 MIN/8.09 MA	1	EA		
PORT. DAS W/CEMWIN,ACQUIRE W/HES, ZI	1	JOB		
ADC (AUTO DENSITY CTRL) SYS, /JOB,ZI	1	JOB		

## Tools and Accessories

Type	Size	Qty	Make	Depth	Type	Size	Qty	Make	Depth	Type	Size	Qty	Make
Guide Shoe					Packer					Top Plug			
Float Shoe					Bridge Plug					Bottom Plug			
Float Collar					Retainer					SSR plug set			
Insert Float										Plug Container			
Stage Tool										Centralizers			

## Miscellaneous Materials

Gelling Agt	Conc	Surfactant	Conc	Acid Type	Qty	Conc	%
Treatment Fld	Conc	Inhibitor	Conc	Sand Type	Size	Qty	



Fluid Data									
Stage/Plug #: 1									
Fluid #	Stage Type	Fluid Name	Qty	Qty uom	Mixing Density lbm/gal	Yield ft <sup>3</sup> /sk	Mix Fluid Gal/sk	Rate bbl/min	Total Mix Fluid Gal/sk
1	DYE SPACER			bbl	.	.0	.0	.0	
2	Lead Cement	VERSACEM (TM) SYSTEM (452010)		sacks	12.3	2.38	13.75		
	2 %	CAL-SEAL 60, 50 LB BAG (101217146)							
	2 %	ECONOLITE (100001580)							
	0.3 %	VERSASET, 55 LB SK (101376573)							
	5.64 lbm	SALT, 100 LB BAG (100003652)							
	0.125 lbm	POLY-E-FLAKE (101216940)							
	0.25 %	D-AIR 3000 (101007446)							
	13.75 Gal	FRESH WATER							
3	Tail Cement	VERSACEM (TM) SYSTEM (452010)		sacks	12.8	2.11	11.75		
	2 %	CAL-SEAL 60, 50 LB BAG (101217146)							
	2 %	ECONOLITE (100001580)							
	0.3 %	VERSASET, 55 LB SK (101376573)							
	5.64 lbm	SALT, 100 LB BAG (100003652)							
	11.75 Gal	FRESH WATER							
4	DISPLACEMENT			bbl	.	.0	.0	.0	
Calculated Values		Pressures		Volumes					
Displacement	63.1	Shut In: Instant		Lost Returns		Cement Slurry	109.2	Pad	
Top Of Cement	0	5 Min		Cement Returns	47	Actual Displacement	63.1	Treatment	
Frac Gradient		15 Min		Spacers	30	Load and Breakdown		Total Job	
Rates									
Circulating		Mixing	7	Displacement	7	Avg. Job	7		
Cement Left In Pipe	Amount	0 ft	Reason	Shoe Joint					
Frac Ring # 1 @	ID	Frac ring # 2 @	ID	Frac Ring # 3 @	ID	Frac Ring # 4 @	ID		
The Information Stated Herein Is Correct				Customer Representative Signature					

*The Road to Excellence Starts with Safety*

Sold To #: 338668	Ship To #: 2695478	Quote #:	Sales Order #: 6531039
Customer: CHEVRON - MID-CONTINENT EBIZ	Customer Rep: MOLLER, RONNIE		
Well Name: SKR	Well #: 598-36-BV-04	API/UWI #: 05-045-16944	
Field: PICEANCE	City (SAP): PARACHUTE	County/Parish: Garfield	State: Colorado
Legal Description:			
Lat: N 39.567 deg. OR N 39 deg. 34 min. 0.271 secs.		Long: W 108.347 deg. OR W -109 deg. 39 min. 12.186 secs.	
Contractor: H&P 316	Rig/Platform Name/Num: H&P 316		
Job Purpose: Cement Surface Casing	Ticket Amount:		
Well Type: Development Well	Job Type: Cement Surface Casing		
Sales Person: DUNNING, DUSTIN	Srv Supervisor: FEUERBORN, JOHN	MBU ID Emp #: 381677	

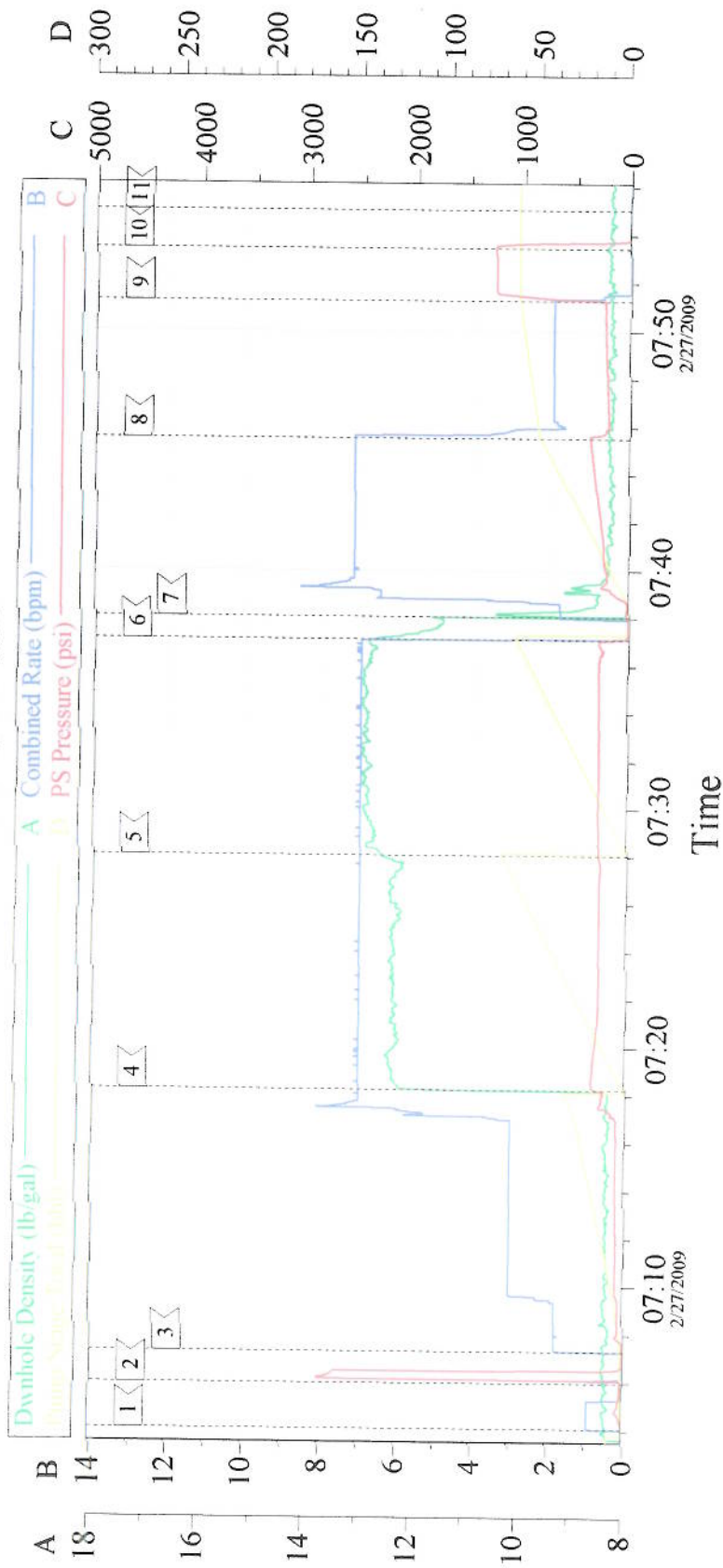
Activity Description	Date/Time	Cht #	Rate bbl/ min	Volume bbl		Pressure psig		Comments
				Stage	Total	Tubing	Casing	
Depart Yard Safety Meeting	02/27/2009 00:15							
Crew Leave Yard	02/27/2009 00:30							
Arrive At Loc	02/27/2009 01:30							
Safety Meeting - Assessment of Location	02/27/2009 01:35							
Other	02/27/2009 01:40							SPOT EQUIPMENT
Pre-Rig Up Safety Meeting	02/27/2009 06:15							
Rig-Up Equipment	02/27/2009 06:20							
Other	02/27/2009 06:30							RIG CIRCULATING ON BOTTOM
Pre-Job Safety Meeting	02/27/2009 06:45							
Start Job	02/27/2009 07:05							
Test Lines	02/27/2009 07:07							2000psi ON TRUCK AND LINES
Pump Spacer 1	02/27/2009 07:09		7	30			220.0	H2O BP 12 RED DYE AND POLYE FLAKE ADDED TO FIRST 10 BBLs
Pump Lead Cement	02/27/2009 07:19		7	58.5			315.0	138sks PUMPED AT 12.3ppg BP 14
Pump Tail Cement	02/27/2009 07:29		7	50.7			275.0	135sks PUMPED AT 12.8ppg BP17
Drop Top Plug	02/27/2009 07:38							PLUG AWAY
Pump Displacement	02/27/2009 07:39		7				370.0	H2O

## Cementing Job Log

Activity Description	Date/Time	Cht #	Rate bbl/ min	Volume bbl		Pressure psig		Comments
				Stage	Total	Tubing	Casing	
Other	02/27/2009 07:47		2	53			230.0	SLOW RATE
Bump Plug	02/27/2009 07:52		2	63.1			1268. 0	
Check Floats	02/27/2009 07:55							HOLDING
End Job	02/27/2009 07:58							GOOD RETURNS 47 BBLs TO SURFACE
Post-Job Safety Meeting (Pre Rig-Down)	02/27/2009 08:00							
Safety Meeting - Departing Location	02/27/2009 10:00							
Crew Leave Location	02/27/2009 10:15							



# 9 5/8 SURFACE



## Event Log

Intersection	pp	Intersection	pp	Intersection	pp
1 < START JOB	07:04:06 -3.000	2 < TEST LINES	07:05:59 19.00	3 < PUMP SPACER	07:07:18 1.000
4 < PUMP LEAD CEMENT	07:18:15 281.2	5 < PUMP TAIL CEMENT	07:28:03 261.0	6 < DROP PLUG	07:37:07 62.87
7 < PUMP DISPLACEMENT	07:38:03 14.90	8 < SLOW RATE	07:45:31 365.7	9 < BUMP PLUG	07:51:16 268.1
10 < CHECK FLOATS	07:53:26 1260	11 < END JOB	07:55:02 -4.000		

Customer: CHEVRON  
 Well Number: SKR 598-36-BV-04  
 Supervisor: JOHN FEUERBORN

Job Date: 2-27-09  
 Pump: ELITE 10  
 Company Rep.: RONNIE MOLLER

Ticket #: 6531039  
 ADC Used: YES  
 Operator: BRAD BRANDON

CemWin v1.7.2  
 27-Feb-09 08:07