
CHEVRON - MID-CONTINENT EBIZ

SKR 598-36-BV-02
SKINNER RIDGE
Garfield County , Colorado

Cement Production Casing
15-Apr-2009

Job Site Documents

The Road to Excellence Starts with Safety

Sold To #: 338668	Ship To #: 2695475	Quote #:	Sales Order #: 6615909
Customer: CHEVRON - MID-CONTINENT EBIZ		Customer Rep: Doherty, Ed	
Well Name: SKR		Well #: 598-36-BV-02	API/UWI #: 05-045-16941
Field: SKINNER RIDGE	City (SAP): PARACHUTE	County/Parish: Garfield	State: Colorado
Lat: N 39.567 deg. OR N 39 deg. 34 min. 0.34 secs.		Long: W 108.347 deg. OR W -109 deg. 39 min. 12.15 secs.	
Contractor: H&P 316		Rig/Platform Name/Num: H&P 316	
Job Purpose: Cement Production Casing			
Well Type: Development Well		Job Type: Cement Production Casing	
Sales Person: HARTLEY, RICHARD		Srvc Supervisor:	MBU ID Emp #:

Job Personnel

HES Emp Name	Exp Hrs	Emp #	HES Emp Name	Exp Hrs	Emp #	HES Emp Name	Exp Hrs	Emp #
ANDREWS, ANTHONY	6.0	321604	BANKS, BRENT	6.0	371353	LUCADO, JARED	6.0	433527
MANSPEAKER, GUY	6.0	330171	O'NEAL, TALLEY	6.0	456423	SCOTT, DALLAS	6.0	334750
SULLIVAN, MARK	6.0	425453	WEAVER, RUSTY	6.0	457698			

Equipment

HES Unit #	Distance-1 way	HES Unit #	Distance-1 way	HES Unit #	Distance-1 way	HES Unit #	Distance-1 way
10951250	60.0	10897797	60.0	10296152	60.0	11139330	60.0

Job Hours

Date	On Location Hours	Operating Hours	Date	On Location Hours	Operating Hours	Date	On Location Hours	Operating Hours
04/15/09	6	1						

TOTAL Total is the sum of each column separately

Job

Formation Name					Job Times				
Formation Depth (MD)		Top	Bottom		Called Out	Date	Time	Time Zone	
Form Type		BHST			On Location	15 - Apr - 2009	09:00	MST	
Job depth MD		6030. ft		Job Depth TVD	6030. ft	Job Started	15 - Apr - 2009	12:57	MST
Water Depth				Wk Ht Above Floor	4. ft	Job Completed	15 - Apr - 2009	14:25	MST
Perforation Depth (MD)		From	To		Departed Loc	15 - Apr - 2009	15:30	MST	

Well Data

Description	New / Used	Max pressure psig	Size in	ID in	Weight lbm/ft	Thread	Grade	Top MD ft	Bottom MD ft	Top TVD ft	Bottom TVD ft
7 7/8 Open Hole Section				7.875				1030.	6015.		
4 1/2 Production Casing	Unknown		4.5	4.	11.6				5990.		
8 5/8 Surface Casing	Unknown		8.625	8.097	24.				1030.		

Sales/Rental/3rd Party (HES)

Description	Qty	Qty uom	Depth	Supplier
PLUG,CMTG, TOP, 4 1/2, HWVE, 3.65 MIN/4.14 MA	1	EA		
PORT. DAS W/CEMWIN; ACQUIRE W/HES, ZI	1	JOB		
ADC (AUTO DENSITY CTRL) SYS, /JOB, ZI	1	JOB		

Tools and Accessories

Type	Size	Qty	Make	Depth	Type	Size	Qty	Make	Depth	Type	Size	Qty	Make
Guide Shoe					Packer					Top Plug	4 1/2"	1	
Float Shoe					Bridge Plug					Bottom Plug			
Float Collar					Retainer					SSR plug set			
Insert Float										Plug Container	4 1/2"	1	
Stage Tool										Centralizers			

Cementing Job Summary

Miscellaneous Materials													
Gelling Agt		Conc		Surfactant		Conc		Acid Type		Qty		Conc	%
Treatment Fld		Conc		Inhibitor		Conc		Sand Type		Size		Qty	
Fluid Data													
Stage/Plug #: 1													
Fluid #	Stage Type	Fluid Name	Qty	Qty uom	Mixing Density lbm/gal	Yield ft ³ /sk	Mix Fluid Gal/sk	Rate bbl/min	Total Mix Fluid Gal/sk				
1	Dyed Polyflake Spacer		50.00	bbl	8.33	.0	.0	.0					
2	Lead Cement	VARICEM (TM) CEMENT (452009)	305.0	sacks	12.8	1.6	7.31						
3	Tail Cement	VARICEM (TM) CEMENT (452009)	630.0	sacks	13.2	1.47	6.32						
4	KCL DISPLACEMENT			bbl	8.4	.0	.0	.0					
Calculated Values			Pressures			Volumes							
Displacement	92.14	Shut In: Instant		Lost Returns		Cement Slurry	251.84	Pad					
Top Of Cement	SURFACE	5 Min		Cement Returns	0	Actual Displacement	91	Treatment					
Frac Gradient		15 Min		Spacers	50	Load and Breakdown		Total Job					
Rates													
Circulating	RIG	Mixing	6.5	Displacement	9	Avg. Job	7						
Cement Left In Pipe	Amount	45.72 ft	Reason	Shoe Joint									
Frac Ring # 1 @	ID	Frac ring # 2 @	ID	Frac Ring # 3 @	ID	Frac Ring # 4 @	ID						
The Information Stated Herein Is Correct				Customer Representative Signature									

The Road to Excellence Starts with Safety

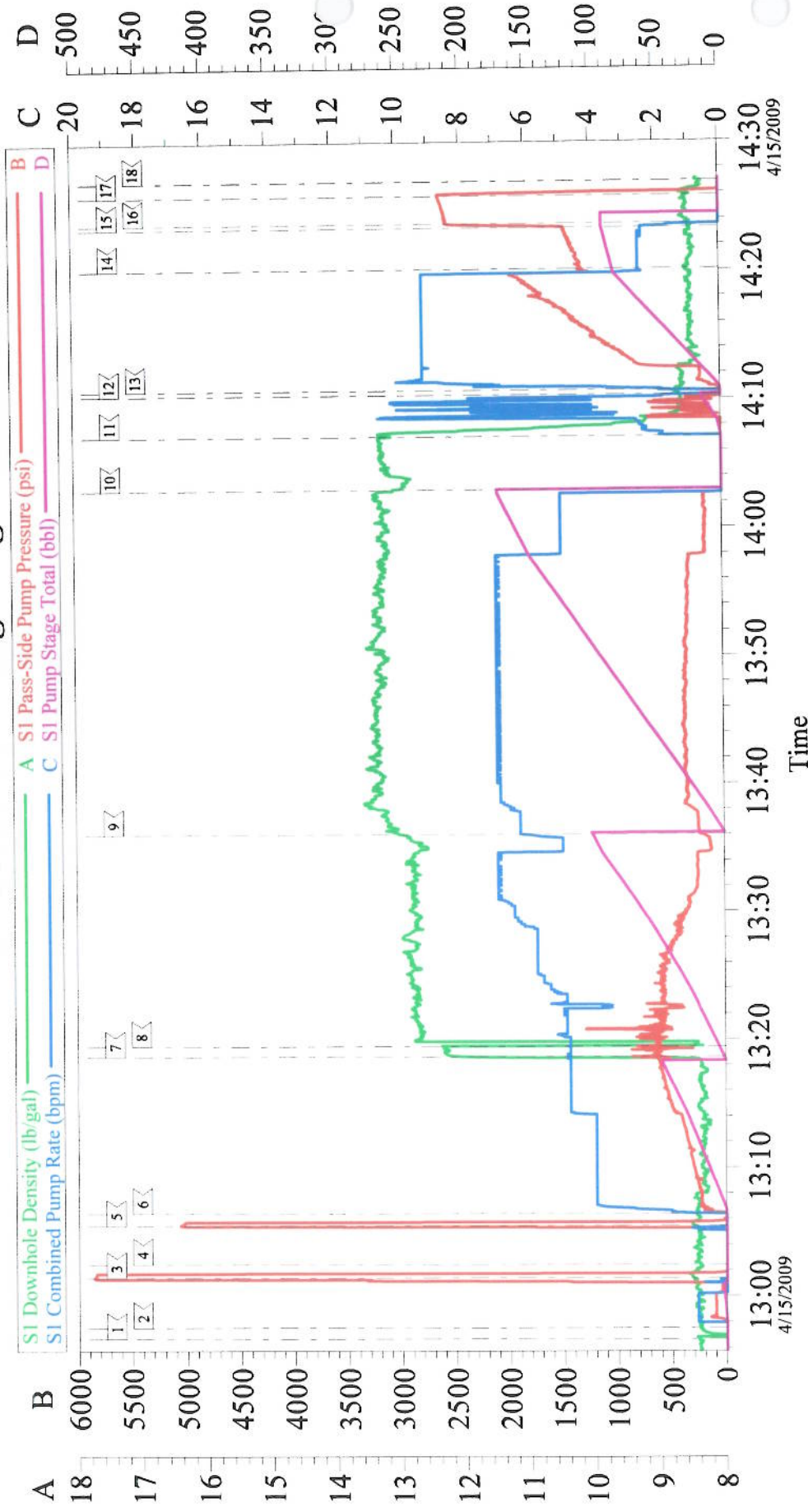
Sold To #: 338668	Ship To #: 2695475	Quote #:	Sales Order #: 6615909
Customer: CHEVRON - MID-CONTINENT EBIZ		Customer Rep: Doherty, Ed	
Well Name: SKR	Well #: 598-36-BV-02	API/UWI #: 05-045-16941	
Field: SKINNER RIDGE	City (SAP): PARACHUTE	County/Parish: Garfield	State: Colorado
Legal Description:			
Lat: N 39.567 deg. OR N 39 deg. 34 min. 0.34 secs.		Long: W 108.347 deg. OR W -109 deg. 39 min. 12.15 secs.	
Contractor: H&P 316	Rig/Platform Name/Num: H&P 316		
Job Purpose: Cement Production Casing			Ticket Amount:
Well Type: Development Well	Job Type: Cement Production Casing		
Sales Person: HARTLEY, RICHARD	Srvc Supervisor:	MBU ID Emp #:	

Activity Description	Date/Time	Cht #	Rate bbl/ min	Volume bbl		Pressure psig		Comments
				Stage	Total	Tubing	Casing	
Call Out	04/15/2009 05:00							TP 5990', TD 6015', SJ 45.72', CASING 4 1/2" 11.6# N-80, HOLE 7 7/8", MW 10.4#, SURFACE @ 1030' 8 5/8" 24#, 43 CENTRILIZERS
Depart Yard Safety Meeting	04/15/2009 07:00							SAFETY MEETING INCLUDING ENTIRE HES CREW; JARED LUCADO WAS DESIGNATED SAFETY OBSERVER
Arrive At Loc	04/15/2009 09:00							RIG STILL RUNNING CASING; APROX 1/2 RACK LEFT
Assessment Of Location Safety Meeting	04/15/2009 09:05							LOCATION ASSESSMENT INCLUDING ENTIRE HES CREW
Rig-Up Equipment	04/15/2009 09:15							1 HES PUMP (ELITE 9), 1 STEADY FLO (SILO), 1 BULK (660), 2 H2O LINES (1 TO UPRIGHT, 1 TO DAY TANK), 1 HARD LINE FROM PUMP TO RIG FLOOR, 1 HARD LINE FROM HEAD TO PIT
Circulate Well	04/15/2009 11:30							RIG CIRCULATED 1.5 HRS PRIOR TO JOB; GOOD RETURNS PRIOR TO JOB

Cementing Job Log

Activity Description	Date/Time	Cht #	Rate bbl/ min	Volume bbl		Pressure psig		Comments
				Stage	Total	Tubing	Casing	
Pre-Job Safety Meeting	04/15/2009 12:30							SAFETY MEETING INCLUDING EVERYONE ON LOCATION
Start Job	04/15/2009 12:57							NO PIPE MOVEMENT DURING JOB; GAS @ <100 UNITS PRIOR TO JOB; FILL LINES
Test Lines	04/15/2009 12:59						5000. 0	LEAK ON RIG FLOOR
Test Lines	04/15/2009 13:03						5000. 0	PSI TEST GOOD; NO LEAKS
Pump Spacer 1	04/15/2009 13:05		4	50			235.0	FRESHWATER SPACER WITH POLYFLAKE IN FIRST 25 BBLS; BP @6 ON H2O BP @ 12 ON CMT
Pump Lead Cement	04/15/2009 13:18		6	86.9			632.0	305 SKS, 12.8 PPG, 1.6 FT3/SK, 7.31 GAL/SK
Pump Tail Cement	04/15/2009 13:35		7	164.9 4			244.0	630 SKS, 13.2 PPG, 1.47 FT3/SK, 6.32 GAL/SK
Shutdown	04/15/2009 14:02							SWAP MANIFOLD TO PIT; WASH PUMPS AND LINES
Drop Top Plug	04/15/2009 14:03							VERIFIED PLUG LEFT CONTAINER
Pump Displacement	04/15/2009 14:10		9	82			190.0	2% KCL DISPLACEMENT
Other	04/15/2009 14:19		2	10			1410. 0	SLOW RATE LAST 10 BBLS OF DISPLACEMENT
Bump Plug	04/15/2009 14:23						1500. 0	TOOK 1000 PSI OVER TO 2500 PSI
Check Floats	04/15/2009 14:25							FLOAT HELD
End Job	04/15/2009 14:25							20 BBLS OF SPACER TO SURFACE
Pre-Rig Down Safety Meeting	04/15/2009 14:30							SAFETY MEETING INCLUDING ENTIRE HES CREW
Rig-Down Equipment	04/15/2009 14:45							NO ANNULAR FLOW AFTER JOB
Safety Meeting - Departing Location	04/15/2009 15:30							SAFETY MEETING INCLUDING ENTIRE HES CREW

4.5" Production Longstring



Local Event Log				
1	START JOB	12:56:41	2	PRIME LINES
3	LEAK ON FLOOR	13:02:27	5	2ND PRESSURE TEST
4	PUMP LEAD CEMENT	13:18:38	8	MIS AUTO-CAL
7	SHUT DOWN	14:02:57	11	WASH LINES
10	PUMP DISPLACEMENT	14:10:41	14	SLOW RATE
13	CHECK FLOATS	14:23:38	17	RELEASE PRESSURE
16			18	END JOB
3	PRESSURE TEST	13:01:24		
6	PUMP SPACER	13:06:24		
9	PUMP TAIL CEMENT	13:36:00		
12	DROP PLUG	14:10:19		
15	BUMP PLUG	14:23:19		
18		14:26:56		

Customer:	CHEVRON - MID-CONTINENT	Job Date:	15-Apr-2009	Sales Order #:	6615909
Well Description:	Skinner Ridge 598-36-BV-02	Job Type:	05-045-16941	ADC Used:	Yes
Company Rep:	Ed Doherty	Cement Supervisor:	Dallas Scott	Elite #/Operator:	9, Guy Manspeaker