
CHEVRON - MID-CONTINENT EBIZ

**SKR 598-36-BV-02
SKINNER RIDGE
Garfield County , Colorado**

Cement Surface Casing
28-Feb-2009

Job Site Documents

The Road to Excellence Starts with Safety

Sold To #: 338668	Ship To #: 2695475	Quote #:	Sales Order #: 6528143
Customer: CHEVRON - MID-CONTINENT EBIZ		Customer Rep: Doherty, Ed	
Well Name: SKR	Well #: 598-36-BV-02	API/UWI #: 05-045-16941	
Field: SKINNER RIDGE	City (SAP): PARACHUTE	County/Parish: Garfield	State: Colorado
Lat: N 39.567 deg. OR N 39 deg. 34 min. 0.34 secs.		Long: W 108.347 deg. OR W -109 deg. 39 min. 12.15 secs.	
Contractor: H&P 316	Rig/Platform Name/Num: H&P 316		
Job Purpose: Cement Surface Casing			
Well Type: Development Well		Job Type: Cement Surface Casing	
Sales Person: DUNNING, DUSTIN	Srvc Supervisor: LEIST, JAMES	MBU ID Emp #: 362787	

Job Personnel

HES Emp Name	Exp Hrs	Emp #	HES Emp Name	Exp Hrs	Emp #	HES Emp Name	Exp Hrs	Emp #
ARNOLD, EDWARD John	5	439784	FRAMPTON, KIRK	5	438934	HAYES, JESSE Doug	5	403601
LEIST, JAMES R	5	362787	NELSON, RYAN Cody	5	386514	OLDS, RYAN John	5	418018

Equipment

HES Unit #	Distance-1 way	HES Unit #	Distance-1 way	HES Unit #	Distance-1 way	HES Unit #	Distance-1 way
10567589C	120 mile	10719774	120 mile	10783493	120 mile	10822007	120 mile
10951249	120 mile	10995027	120 mile				

Job Hours

Date	On Location Hours	Operating Hours	Date	On Location Hours	Operating Hours	Date	On Location Hours	Operating Hours
2-28-09	5	1.75						

TOTAL Total is the sum of each column separately

Job				Job Times			
Formation Name				Date	Time	Time Zone	
Formation Depth (MD)	Top	Bottom		Called Out	28 - Feb - 2009 08:30	MST	
Form Type	BHST			On Location	28 - Feb - 2009 01:30	MST	
Job depth MD	1050. ft	Job Depth TVD	1050. ft	Job Started	28 - Feb - 2009 17:04	MST	
Water Depth		Wk Ht Above Floor	4. ft	Job Completed	28 - Feb - 2009 17:45	MST	
Perforation Depth (MD)	From	To		Departed Loc	28 - Feb - 2009 19:00	MST	

Well Data

Description	New / Used	Max pressure psig	Size in	ID in	Weight lbm/ft	Thread	Grade	Top MD ft	Bottom MD ft	Top TVD ft	Bottom TVD ft
-------------	------------	-------------------	---------	-------	---------------	--------	-------	-----------	--------------	------------	---------------

Sales/Rental/3rd Party (HES)

Description	Qty	Qty uom	Depth	Supplier
PLUG,CMTG,TOP,8 5/8,HVVE,7.20 MIN/8.09 MA	1	EA		

Tools and Accessories

Type	Size	Qty	Make	Depth	Type	Size	Qty	Make	Depth	Type	Size	Qty	Make
Guide Shoe					Packer					Top Plug	8.625	1	HES
Float Shoe					Bridge Plug					Bottom Plug			
Float Collar					Retainer					SSR plug set			
Insert Float										Plug Container	8.625	1	HES
Stage Tool										Centralizers			

Miscellaneous Materials

Gelling Agt	Conc	Surfactant	Conc	Acid Type	Qty	Conc %
Treatment Fld	Conc	Inhibitor	Conc	Sand Type	Size	Qty

HALLIBURTON**Cementing Job Summary****Fluid Data****Stage/Plug #: 1**

Fluid #	Stage Type	Fluid Name	Qty	Qty uom	Mixing Density lbm/gal	Yield ft ³ /sk	Mix Fluid Gal/sk	Rate bbl/min	Total Mix Fluid Gal/sk
1	PolyFlake Dyed Spacer		30	bbl	8.33	.0	.0	.0	
2	VersaCem Lead Cement	VERSACEM (TM) SYSTEM (452010)	120	sacks	12.3	2.38	13.75		13.75
3	VersaCem Tail Cement	VERSACEM (TM) SYSTEM (452010)	130	sacks	12.8	2.11	11.75		11.75
4	Fresh Water Displacement		62.9	bbl	8.33	.0	.0	.0	

Calculated Values**Pressures****Volumes**

Displacement	62.9	Shut In: Instant		Lost Returns		Cement Slurry	99.9	Pad	
Top Of Cement	0	5 Min		Cement Returns	1 BBL	Actual Displacement	62.9	Treatment	
Frac Gradient		15 Min		Spacers		Load and Breakdown		Total Job	

Rates

Circulating		Mixing	6	Displacement	7	Avg. Job	6.4
Cement Left In Pipe	Amount	44 ft	Reason	Shoe Joint			
Frac Ring # 1 @	ID	Frac ring # 2 @	ID	Frac Ring # 3 @	ID	Frac Ring # 4 @	ID

The Information Stated Herein Is Correct

Customer Representative Signature

The Road to Excellence Starts with Safety

Sold To #: 338668		Ship To #: 2695475		Quote #:		Sales Order #: 6528143	
Customer: CHEVRON - MID-CONTINENT EBIZ				Customer Rep: Doherty, Ed			
Well Name: SKR			Well #: 598-36-BV-02		API/UWI #: 05-045-16941		
Field: SKINNER RIDGE		City (SAP): PARACHUTE		County/Parish: Garfield		State: Colorado	
Legal Description:							
Lat: N 39.567 deg. OR N 39 deg. 34 min. 0.34 secs.				Long: W 108.347 deg. OR W -109 deg. 39 min. 12.15 secs.			
Contractor: H&P 316			Rig/Platform Name/Num: H&P 316				
Job Purpose: Cement Surface Casing						Ticket Amount:	
Well Type: Development Well			Job Type: Cement Surface Casing				
Sales Person: DUNNING, DUSTIN			Srv Supervisor: LEIST, JAMES			MBU ID Emp #: 362787	

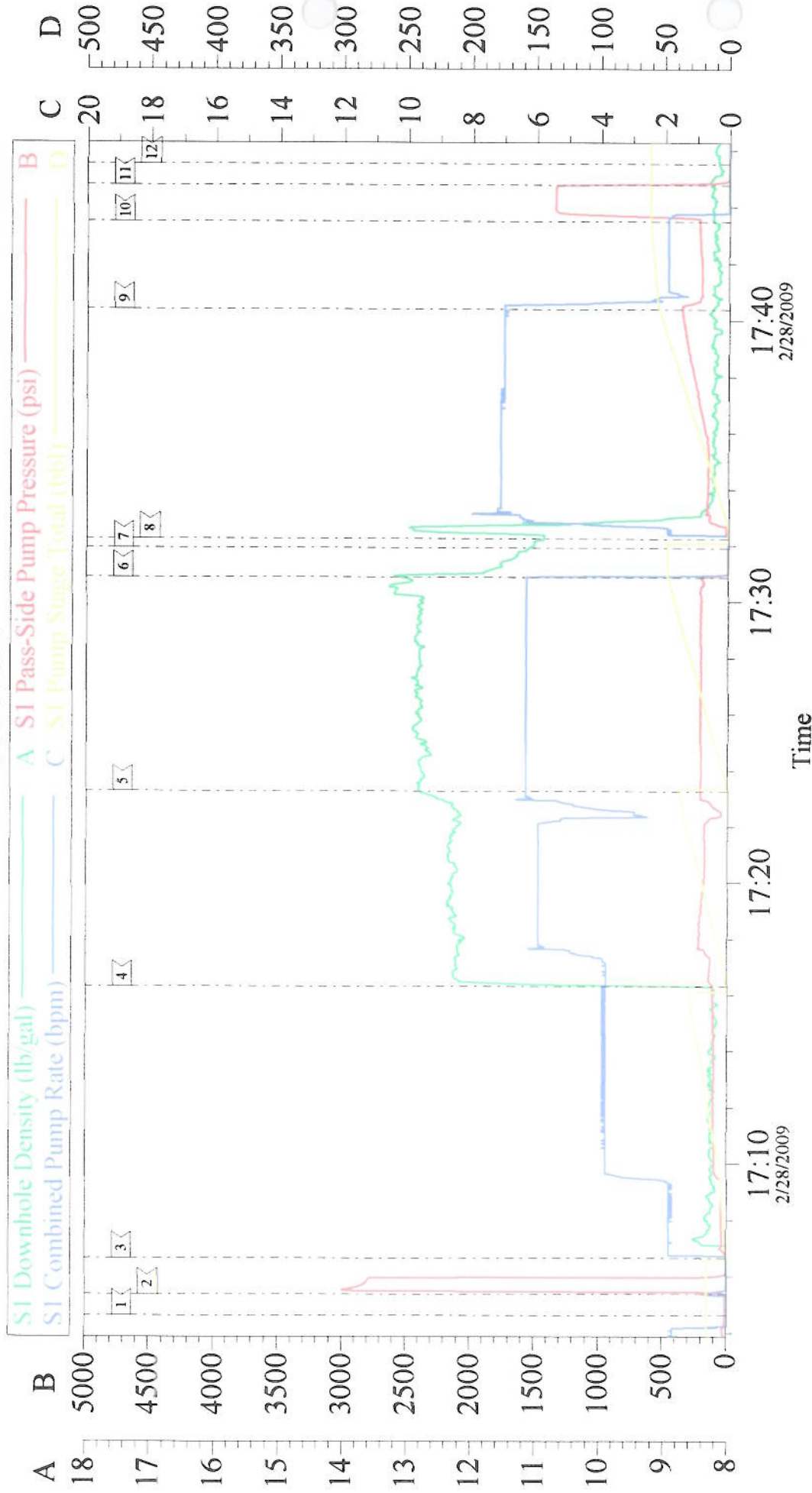
Activity Description	Date/Time	Cht #	Rate bbl/min	Volume bbl		Pressure psig		Comments
				Stage	Total	Tubing	Casing	
Call Out	02/28/2009 08:30							TP-1033, TD-1050, S.J.-44, HOLE-121/4, MUD#-9
Pre-Convoy Safety Meeting	02/28/2009 11:30							WITH ALL HES PERSONNEL
Crew Leave Yard	02/28/2009 11:45							GOOD CIRULATION THROUGHOUT JOB, NO PIPE MOVEMENT DURING JOB
Arrive At Loc	02/28/2009 13:10							
Assessment Of Location Safety Meeting	02/28/2009 13:20							WITH ALL HES PERSONNEL
Pre-Rig Up Safety Meeting	02/28/2009 13:30							WITH ALL HES PERSONNEL
Rig-Up Completed	02/28/2009 14:15							
Pre-Job Safety Meeting	02/28/2009 16:30							WITH ALL ON LOCATION PERSONNEL
Start Job	02/28/2009 17:04							
Pressure Test	02/28/2009 17:05							3000 PSI
Pump Spacer 1	02/28/2009 17:06		4		30		109.0	PLOYFLAKE, DYE BP-10
Pump Lead Cement	02/28/2009 17:16		6		50.9		175.0	120 SKS, 12.3 PPG, 2.38 FT3/SK, 13.75 GAL/SK BP- 17
Pump Tail Cement	02/28/2009 17:23		6		49		165.0	130 SKS, 12.8 PPG, 2.11 FT3/SK, 11.75 GAL/SK BP- 17
Shutdown	02/28/2009 17:30							
Drop Top Plug	02/28/2009 17:31							THE TOP PLUG HAS LEFT THE CONTAINER

Cementing Job Log

Activity Description	Date/Time	Cht #	Rate bbl/ min	Volume bbl		Pressure psig		Comments
				Stage	Total	Tubing	Casing	
Pump Displacement	02/28/2009 17:32		7		62.9		405.0	FRESH WATER
Slow Rate	02/28/2009 17:40		2		50		216.0	TO BUMP PLUG
Bump Plug	02/28/2009 17:43		2		62.9		216.0	
Check Floats	02/28/2009 17:44						1216.0	THE FLOATS ARE HOLDING
End Job	02/28/2009 17:45							
Pre-Rig Down Safety Meeting	02/28/2009 17:50							WITH ALL HES PERSONNEL
Rig-Down Completed	02/28/2009 18:30							
Pre-Convoy Safety Meeting	02/28/2009 19:00							WITH ALL HES PERSONNEL
Crew Leave Location	02/28/2009 19:30							
Comment	02/28/2009 19:35							THANKYOU FOR USING HALLIBURTON CEMENT, JAMES LEIST, RYAN NELSON AND CREW

CHEVRON

8.625 SURFACE



Customer: CHEVRON	Job Date: 28-Feb-2009	Sales Order #: 6528143
Well Description: SKR 598-36-BV-02	Job Type: SURFACE	ADC Used: YES
Company Rep: RONNIE	Cement Supervisor: JAMES LEIST	Elite #:3 JESSIE HAYES