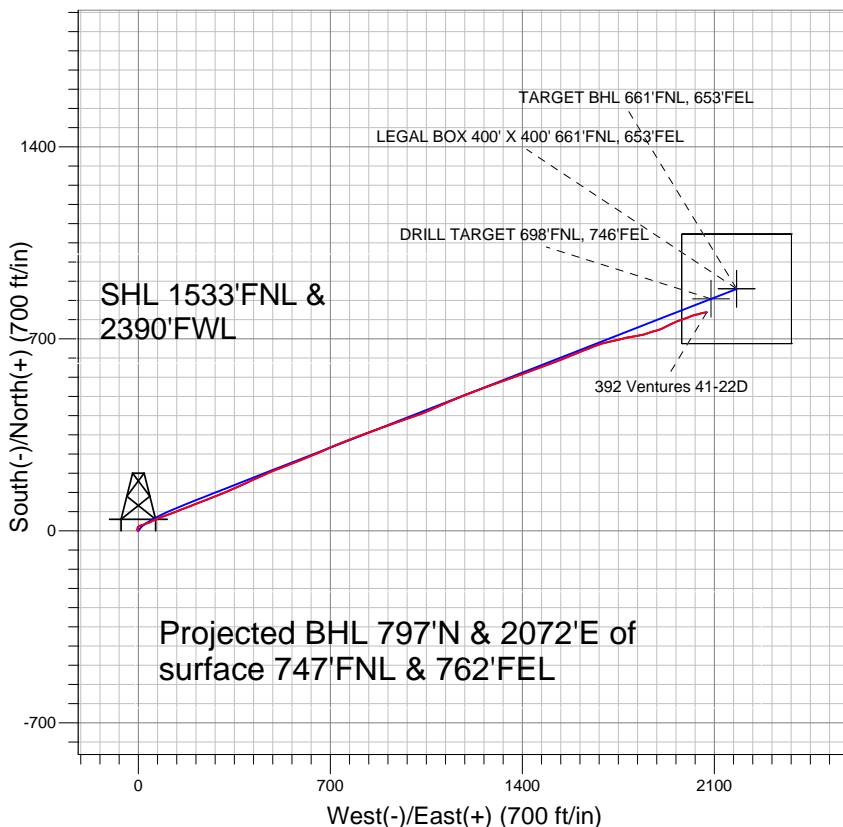


## Peterson Energy Operating Inc.- Weld County, CO



### LEGEND

- 392 Ventures 41-22D, Wellbore #1, Plan #4 (11-26-11) V0
- Wellbore #1
- Survey #1

## Final Survey Plot

Projected Final Survey -  
 7785'MD & 7369'TVD @ 2220'VS  
 1.0 deg Inc 87.3 deg AZ

Project: SEC.22-T6N-R67W  
 Site: 392 Ventures Pad Sec.22-T6N-R67W  
 Well: 392 Ventures 41-22D  
 Plan: Wellbore #1



## **Directional**

### **Peterson Energy Operating Inc.- Weld County, CO**

**SEC.22-T6N-R67W**

**392 Ventures Pad Sec.22-T6N-R67W**

**392 Ventures 41-22D**

**Wellbore #1**

**Survey: Survey #1**

### **Standard Survey Report**

**05 December, 2011**

Survey										
	Measured Depth (ft)	Inclination (°)	Azimuth (°)	Vertical Depth (ft)	+N/-S (ft)	+E/-W (ft)	Vertical Section (ft)	Dogleg Rate (°/100ft)	Build Rate (°/100ft)	Turn Rate (°/100ft)
Survey	0.0	0.00	0.00	0.0	0.0	0.0	0.0	0.00	0.00	0.00
	90.0	0.80	296.40	90.0	0.3	-0.6	-0.4	0.89	0.89	0.00
	182.0	0.80	290.00	182.0	0.8	-1.7	-1.3	0.10	0.00	-6.96
	275.0	0.40	285.70	275.0	1.1	-2.7	-2.1	0.43	-0.43	-4.62
	367.0	2.30	350.90	367.0	3.0	-3.3	-1.9	2.35	2.07	70.87
	419.0	3.70	5.40	418.9	5.7	-3.3	-0.9	3.04	2.69	27.88
	467.0	3.70	5.40	466.8	8.8	-3.0	0.5	0.00	0.00	0.00
	489.0	4.60	10.50	488.7	10.4	-2.8	1.3	4.42	4.09	23.18
	587.0	3.90	54.50	586.5	16.2	0.7	6.7	3.31	-0.71	44.90
	680.0	7.00	71.40	679.1	19.8	8.6	15.4	3.72	3.33	18.17
	774.0	10.00	72.20	772.0	24.1	21.8	29.3	3.19	3.19	0.85
	867.0	12.00	65.70	863.3	30.6	38.3	47.0	2.53	2.15	-6.99

<b>Company:</b>	Peterson Energy Operating Inc.- Weld County, CO	<b>Local Co-ordinate Reference:</b>	Well 392 Ventures 41-22D
<b>Project:</b>	SEC.22-T6N-R67W	<b>TVD Reference:</b>	WELL @ 4799.0ft (Original Well Elev)
<b>Site:</b>	392 Ventures Pad Sec.22-T6N-R67W	<b>MD Reference:</b>	WELL @ 4799.0ft (Original Well Elev)
<b>Well:</b>	392 Ventures 41-22D	<b>North Reference:</b>	True
<b>Wellbore:</b>	Wellbore #1	<b>Survey Calculation Method:</b>	Minimum Curvature
<b>Design:</b>	Wellbore #1	<b>Database:</b>	Landmark

Survey									
Measured Depth (ft)	Inclination (°)	Azimuth (°)	Vertical Depth (ft)	+N/-S (ft)	+E/-W (ft)	Vertical Section (ft)	Dogleg Rate (°/100ft)	Build Rate (°/100ft)	Turn Rate (°/100ft)
961.0	14.80	65.50	954.7	39.6	58.2	68.8	2.98	2.98	-0.21
1,054.0	18.20	68.60	1,043.9	49.8	82.5	95.2	3.78	3.66	3.33
1,148.0	20.60	70.10	1,132.5	60.8	111.7	126.4	2.61	2.55	1.60
1,242.0	22.50	67.90	1,220.0	73.2	143.9	160.9	2.20	2.02	-2.34
1,335.0	23.90	68.90	1,305.5	86.7	178.0	197.5	1.56	1.51	1.08
1,429.0	24.30	69.20	1,391.3	100.4	213.9	235.9	0.45	0.43	0.32
1,522.0	24.60	68.50	1,475.9	114.3	249.8	274.4	0.45	0.32	-0.75
1,616.0	24.30	68.00	1,561.5	128.7	285.9	313.3	0.39	-0.32	-0.53
1,709.0	24.50	67.00	1,646.2	143.4	321.4	351.7	0.49	0.22	-1.08
1,803.0	24.40	66.40	1,731.8	158.8	357.1	390.6	0.28	-0.11	-0.64
1,897.0	24.70	64.90	1,817.3	174.9	392.7	429.6	0.74	0.32	-1.60
1,990.0	23.90	67.00	1,902.0	190.5	427.6	467.9	1.27	-0.86	2.26
2,084.0	23.70	65.10	1,988.0	205.9	462.3	505.8	0.84	-0.21	-2.02
2,177.0	23.00	67.70	2,073.4	220.7	496.1	542.6	1.34	-0.75	2.80
2,271.0	22.70	69.20	2,160.0	234.1	530.0	579.1	0.70	-0.32	1.60
2,364.0	23.10	67.80	2,245.7	247.3	563.7	615.3	0.73	0.43	-1.51
2,458.0	23.00	68.60	2,332.2	261.0	597.8	652.1	0.35	-0.11	0.85
2,552.0	23.60	67.70	2,418.5	274.8	632.4	689.3	0.74	0.64	-0.96
2,645.0	24.00	66.40	2,503.6	289.5	666.9	726.8	0.71	0.43	-1.40
2,739.0	23.80	66.50	2,589.6	304.7	701.8	764.9	0.22	-0.21	0.11
2,832.0	23.30	68.10	2,674.8	319.0	736.1	802.0	0.87	-0.54	1.72
2,926.0	22.90	68.90	2,761.3	332.6	770.4	838.9	0.54	-0.43	0.85
3,019.0	22.70	68.70	2,847.0	345.6	804.0	874.9	0.23	-0.22	-0.22
3,113.0	21.50	69.90	2,934.1	358.1	837.1	910.3	1.36	-1.28	1.28
3,206.0	21.20	69.90	3,020.7	369.7	868.9	944.1	0.32	-0.32	0.00
3,300.0	21.70	69.90	3,108.2	381.5	901.2	978.5	0.53	0.53	0.00
3,394.0	21.80	70.80	3,195.5	393.3	934.0	1,013.3	0.37	0.11	0.96
3,487.0	21.60	72.20	3,281.9	404.2	966.6	1,047.6	0.60	-0.22	1.51
3,581.0	20.80	69.90	3,369.6	415.2	998.7	1,081.5	1.23	-0.85	-2.45
3,674.0	20.20	69.30	3,456.7	426.5	1,029.2	1,114.1	0.68	-0.65	-0.65
3,768.0	20.50	66.50	3,544.8	438.8	1,059.5	1,146.8	1.08	0.32	-2.98
3,862.0	22.20	65.50	3,632.4	452.8	1,090.8	1,181.0	1.85	1.81	-1.06
3,955.0	22.20	66.50	3,718.5	467.1	1,122.9	1,216.1	0.41	0.00	1.08
4,049.0	23.10	67.70	3,805.2	481.1	1,156.2	1,252.3	1.08	0.96	1.28
4,142.0	24.00	68.80	3,890.5	494.9	1,190.7	1,289.4	1.08	0.97	1.18
4,236.0	24.30	68.60	3,976.2	508.9	1,226.6	1,327.9	0.33	0.32	-0.21
4,329.0	24.40	68.90	4,061.0	522.8	1,262.3	1,366.2	0.17	0.11	0.32
4,423.0	25.00	71.30	4,146.4	536.1	1,299.2	1,405.5	1.24	0.64	2.55
4,517.0	25.50	70.50	4,231.4	549.3	1,337.1	1,445.5	0.64	0.53	-0.85
4,610.0	25.50	68.90	4,315.3	563.1	1,374.7	1,485.5	0.74	0.00	-1.72
4,704.0	24.70	69.60	4,400.5	577.3	1,412.0	1,525.4	0.91	-0.85	0.74
4,797.0	23.90	71.00	4,485.2	590.2	1,448.0	1,563.6	1.06	-0.86	1.51
4,891.0	24.40	70.10	4,571.0	603.0	1,484.2	1,602.1	0.66	0.53	-0.96
4,984.0	24.60	69.10	4,655.6	616.4	1,520.4	1,640.6	0.50	0.22	-1.08
5,078.0	23.40	68.50	4,741.5	630.3	1,556.0	1,678.8	1.30	-1.28	-0.64
5,172.0	23.20	67.10	4,827.8	644.3	1,590.5	1,716.0	0.63	-0.21	-1.49
5,265.0	22.90	68.80	4,913.4	658.0	1,624.2	1,752.4	0.79	-0.32	1.83
5,359.0	21.50	66.80	5,000.4	671.4	1,657.1	1,787.9	1.69	-1.49	-2.13
5,452.0	21.70	75.10	5,086.9	682.5	1,689.4	1,822.0	3.29	0.22	8.92
5,546.0	22.20	77.30	5,174.1	690.9	1,723.5	1,856.8	1.02	0.53	2.34
5,639.0	21.70	75.40	5,260.4	699.1	1,757.3	1,891.2	0.93	-0.54	-2.04
5,733.0	20.00	79.80	5,348.2	706.3	1,789.9	1,924.2	2.46	-1.81	4.68
5,827.0	17.60	80.10	5,437.2	711.6	1,819.7	1,953.8	2.56	-2.55	0.32

<b>Company:</b>	Peterson Energy Operating Inc.- Weld County, CO	<b>Local Co-ordinate Reference:</b>	Well 392 Ventures 41-22D
<b>Project:</b>	SEC.22-T6N-R67W	<b>TVD Reference:</b>	WELL @ 4799.0ft (Original Well Elev)
<b>Site:</b>	392 Ventures Pad Sec.22-T6N-R67W	<b>MD Reference:</b>	WELL @ 4799.0ft (Original Well Elev)
<b>Well:</b>	392 Ventures 41-22D	<b>North Reference:</b>	True
<b>Wellbore:</b>	Wellbore #1	<b>Survey Calculation Method:</b>	Minimum Curvature
<b>Design:</b>	Wellbore #1	<b>Database:</b>	Landmark

Survey									
Measured Depth (ft)	Inclination (°)	Azimuth (°)	Vertical Depth (ft)	+N/-S (ft)	+E/-W (ft)	Vertical Section (ft)	Dogleg Rate (°/100ft)	Build Rate (°/100ft)	Turn Rate (°/100ft)
5,920.0	15.50	74.00	5,526.3	717.4	1,845.5	1,979.9	2.93	-2.26	-6.56
6,014.0	14.80	72.20	5,617.1	724.6	1,869.0	2,004.4	0.90	-0.74	-1.91
6,107.0	13.00	73.30	5,707.4	731.2	1,890.4	2,026.6	1.96	-1.94	1.18
6,201.0	12.20	66.70	5,799.1	738.2	1,909.6	2,047.1	1.75	-0.85	-7.02
6,294.0	12.30	63.00	5,890.0	746.6	1,927.5	2,066.8	0.85	0.11	-3.98
6,388.0	11.30	62.70	5,982.0	755.3	1,944.6	2,085.9	1.07	-1.06	-0.32
6,482.0	9.60	66.10	6,074.4	762.7	1,959.9	2,102.9	1.92	-1.81	3.62
6,575.0	10.50	73.50	6,166.0	768.3	1,975.2	2,119.1	1.69	0.97	7.96
6,669.0	11.10	69.30	6,258.3	773.9	1,991.8	2,136.7	1.05	0.64	-4.47
6,762.0	10.60	66.80	6,349.7	780.4	2,008.1	2,154.2	0.74	-0.54	-2.69
6,856.0	8.30	74.30	6,442.4	785.7	2,022.5	2,169.6	2.77	-2.45	7.98
6,922.9	6.57	76.24	6,508.7	787.9	2,030.9	2,178.2	2.61	-2.58	2.90
<b>DRILL TARGET 698'FNL, 746'FEL</b>									
6,949.0	5.90	77.30	6,534.7	788.6	2,033.7	2,181.0	2.61	-2.57	4.07
7,043.0	5.30	74.00	6,628.2	790.8	2,042.6	2,190.1	0.72	-0.64	-3.51
7,136.0	4.10	75.10	6,720.9	792.9	2,049.9	2,197.6	1.29	-1.29	1.18
7,230.0	3.30	76.60	6,814.7	794.3	2,055.8	2,203.6	0.86	-0.85	1.60
7,301.3	2.69	79.14	6,886.0	795.1	2,059.4	2,207.3	0.87	-0.85	3.56
<b>LEGAL BOX 400' X 400' 661'FNL, 653'FEL</b>									
7,324.0	2.50	80.20	6,908.6	795.3	2,060.4	2,208.3	0.87	-0.85	4.69
7,417.0	2.20	78.80	7,001.5	796.0	2,064.2	2,212.0	0.33	-0.32	-1.51
7,511.0	1.50	86.30	7,095.5	796.4	2,067.2	2,215.0	0.79	-0.74	7.98
7,604.0	1.20	69.70	7,188.4	796.9	2,069.3	2,217.1	0.53	-0.32	-17.85
7,698.0	1.10	78.20	7,282.4	797.4	2,071.1	2,219.0	0.21	-0.11	9.04
7,741.0	1.00	87.30	7,325.4	797.5	2,071.9	2,219.7	0.45	-0.23	21.16
<b>TARGET BHL 661'FNL, 653'FEL</b>									
7,785.0	1.00	87.30	7,369.4	797.5	2,072.7	2,220.5	0.00	0.00	0.00

Checked By: \_\_\_\_\_ Approved By: \_\_\_\_\_ Date: \_\_\_\_\_