

HALLIBURTON

WILLIAMS PRODUCTION RMT INC - EBUS

**GM 34-23
GRAND VALLEY
Garfield County , Colorado**

Cement Surface Casing
14-Oct-2011

Post Job Report

The Road to Excellence Starts with Safety

Sold To #: 300721	Ship To #: 2883579	Quote #:	Sales Order #: 8534358
Customer: WILLIAMS PRODUCTION RMT INC - EBUS		Customer Rep: Hartl, Al	
Well Name: GM	Well #: 34-23	API/UWI #: 05-045-20478	
Field: GRAND VALLEY	City (SAP): PARACHUTE	County/Parish: Garfield	State: Colorado
Lat: N 39.506 deg. OR N 39 deg. 30 min. 22.601 secs.		Long: W 108.083 deg. OR W -109 deg. 55 min. 1.139 secs.	
Contractor: Nabors Industries LTD.	Rig/Platform Name/Num: Nabors 576		
Job Purpose: Cement Surface Casing			
Well Type: Development Well		Job Type: Cement Surface Casing	
Sales Person: KOHL, KYLE		Srvc Supervisor: YOUNG, JEREMY	MBU ID Emp #: 418013

Job Personnel

HES Emp Name	Exp Hrs	Emp #	HES Emp Name	Exp Hrs	Emp #	HES Emp Name	Exp Hrs	Emp #
BATH, KYLE Thomas	8	477632	BECK, MICHAEL George	8	489151	SMITH, DUSTIN Michael	8	418015
YOUNG, JEREMY R	8	418013						

Equipment

HES Unit #	Distance-1 way	HES Unit #	Distance-1 way	HES Unit #	Distance-1 way	HES Unit #	Distance-1 way
10592964	60 mile	10744549	60 mile	11259883	60 mile	11560046	60 mile
11562538	60 mile						

Job Hours

Date	On Location Hours	Operating Hours	Date	On Location Hours	Operating Hours	Date	On Location Hours	Operating Hours
10/14/2011	8	3						

TOTAL Total is the sum of each column separately

Job

Job Times

Formation Name	Top	Bottom	Called Out	Date	Time	Time Zone
Formation Depth (MD)			On Location	14 - Oct - 2011	03:00	MST
Form Type		BHST	Job Started	14 - Oct - 2011	11:41	MST
Job depth MD	879. ft	Job Depth TVD	Job Completed	14 - Oct - 2011	12:32	MST
Water Depth		Wk Ht Above Floor	Departed Loc	14 - Oct - 2011	14:00	MST
Perforation Depth (MD)	From	To				

Well Data

Description	New / Used	Max pressure psig	Size in	ID in	Weight lbm/ft	Thread	Grade	Top MD ft	Bottom MD ft	Top TVD ft	Bottom TVD ft
13 1/2" Open Hole				13.5				.	890.		
9 5/8" Surface Casing	New		9.625	9.001	32.3		H-40	.	879.		

Sales/Rental/3rd Party (HES)

Description	Qty	Qty uom	Depth	Supplier
PLUG,CMTG, TOP, 9 5/8, HWE, 8.16 MIN/9.06 MA	1	EA		

Tools and Accessories

Type	Size	Qty	Make	Depth	Type	Size	Qty	Make	Depth	Type	Size	Qty	Make
Guide Shoe					Packer					Top Plug	9.625	1	HES
Float Shoe					Bridge Plug					Bottom Plug			
Float Collar					Retainer					SSR plug set			
Insert Float										Plug Container	9.625	1	HES
Stage Tool										Centralizers			

Miscellaneous Materials

Gelling Agt	Conc	Surfactant	Conc	Acid Type	Qty	Conc	%
Treatment Fld	Conc	Inhibitor	Conc	Sand Type	Size	Qty	

Fluid Data

Stage/Plug #: 1

Fluid #	Stage Type	Fluid Name	Qty	Qty uom	Mixing Density lbm/gal	Yield ft ³ /sk	Mix Fluid Gal/sk	Rate bbl/min	Total Mix Fluid Gal/sk
1	Water Spacer	FRESH WATER	20.00	bbl	8.34	.0	.0	4	
2	VersaCem Tail Cement	VERSACEM (TM) SYSTEM (452010)	235.0	sacks	12.8	2.11	11.75	8	11.75
	11.75 Gal	FRESH WATER							
3	Displacement Fluid	FRESH WATER	66.50	bbl	8.34	.0	.0	10	
Calculated Values		Pressures		Volumes					
Displacement	66.5	Shut In: Instant		Lost Returns	NO	Cement Slurry	88.3	Pad	
Top Of Cement	SURFACE	5 Min		Cement Returns	25	Actual Displacement	66.5	Treatment	
Frac Gradient		15 Min		Spacers	20	Load and Breakdown		Total Job	174.8
Rates									
Circulating		Mixing	8	Displacement	10	Avg. Job	9		
Cement Left In Pipe	Amount	34.5 ft	Reason	Shoe Joint					
Frac Ring # 1 @	ID	Frac ring # 2 @	ID	Frac Ring # 3 @	ID	Frac Ring # 4 @	ID		
The Information Stated Herein Is Correct				Customer Representative Signature					

The Road to Excellence Starts with Safety

Sold To #: 300721	Ship To #: 2883579	Quote #:	Sales Order #: 8534358
Customer: WILLIAMS PRODUCTION RMT INC - EBUS		Customer Rep: Hartl, Al	
Well Name: GM	Well #: 34-23	API/UWI #: 05-045-20478	
Field: GRAND VALLEY	City (SAP): PARACHUTE	County/Parish: Garfield	State: Colorado
Legal Description:			
Lat: N 39.506 deg. OR N 39 deg. 30 min. 22.601 secs.		Long: W 108.083 deg. OR W -109 deg. 55 min. 1.139 secs.	
Contractor: Nabors Industries LTD.		Rig/Platform Name/Num: Nabors 576	
Job Purpose: Cement Surface Casing			Ticket Amount:
Well Type: Development Well		Job Type: Cement Surface Casing	
Sales Person: KOHL, KYLE		Srvc Supervisor: YOUNG, JEREMY	MBU ID Emp #: 418013

Activity Description	Date/Time	Cht #	Rate bbl/min	Volume bbl		Pressure psig		Comments
				Stage	Total	Tubing	Casing	
Call Out	10/14/2011 03:00							TD 890 FT, TP 879 FT, SHOE 34.5 FT, HOLE 13 1/2 IN, MUD WT 9.8 PPG, CSG 9 5/8 IN 32.3 LB/FT
Pre-Convoy Safety Meeting	10/14/2011 04:50							WITH ALL HES PERSONNEL
Crew Leave Yard	10/14/2011 05:00							
Arrive At Loc	10/14/2011 06:00							RIG WAS PULLING DRILL PIPE UPON HES ARRIVAL
Assessment Of Location Safety Meeting	10/14/2011 10:25							WITH ALL HES PERSONNEL
Other	10/14/2011 10:30							SPOT EQUIPMENT
Pre-Rig Up Safety Meeting	10/14/2011 10:40							WITH ALL HES PERSONNEL
Rig-Up Equipment	10/14/2011 10:45							
Pre-Job Safety Meeting	10/14/2011 11:25							WITH ALL PERSONNEL ON LOCATION
Start Job	10/14/2011 11:41							
Other	10/14/2011 11:42		2	2			35.0	FILL LINES WITH FRESH WATER
Test Lines	10/14/2011 11:43							TEST LINES TO 3300 PSI. PRESSURE HOLDING
Pump Spacer 1	10/14/2011 11:49		4	20			72.0	FRESH WATER
Pump Tail Cement	10/14/2011 11:57		8	88.3			230.0	235 SKS AT 12.8 PPG, 2.11 FT ³ /SK, 11.75 GAL/SK
Shutdown	10/14/2011 12:12							

Sold To #: 300721

Ship To #: 2883579

Quote #:

Sales Order #:

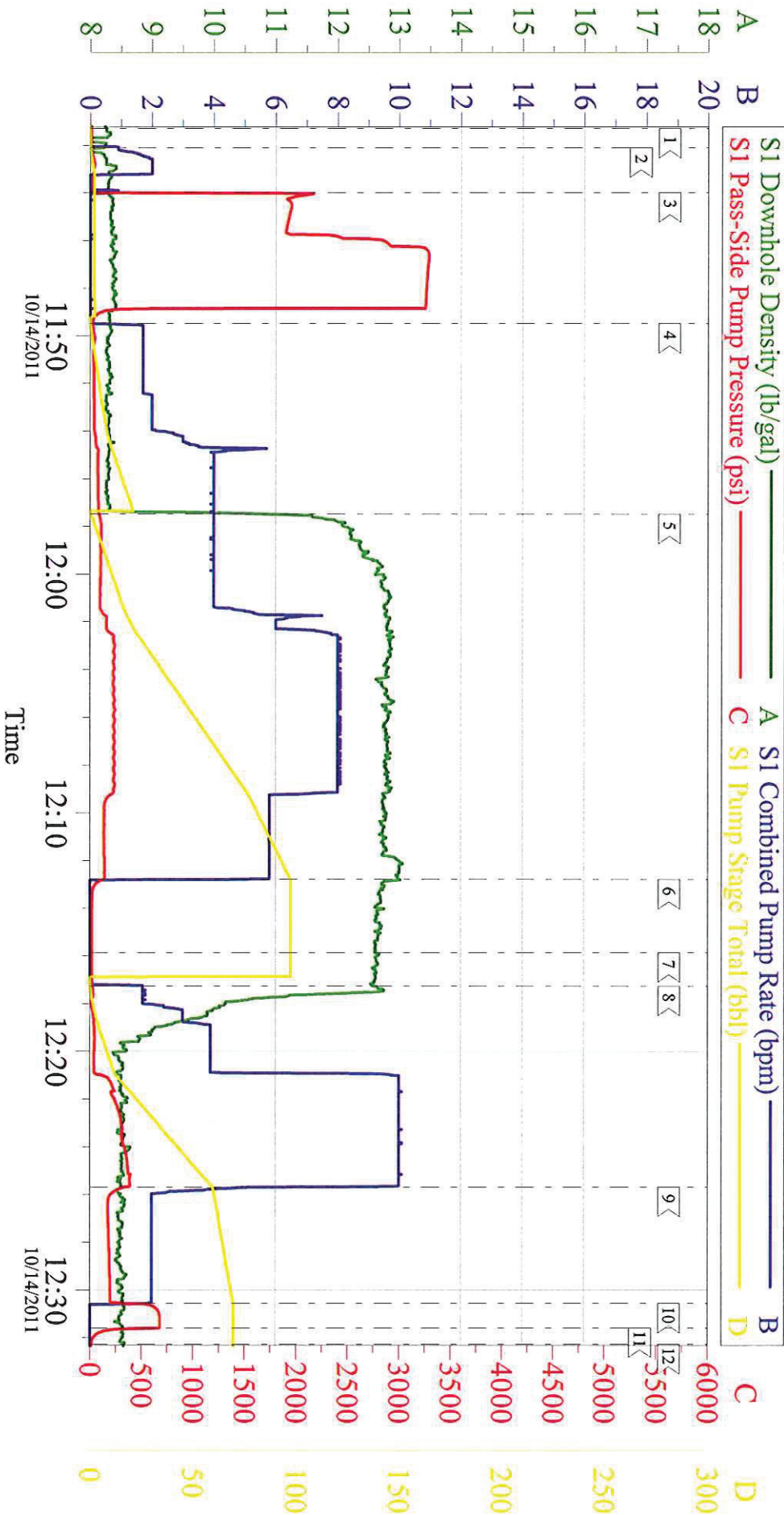
8534358

SUMMIT Version: 7.2.27

Sunday, October 16, 2011 08:58:00

Activity Description	Date/Time	Cht #	Rate bbl/min	Volume bbl		Pressure psig		Comments
				Stage	Total	Tubing	Casing	
Drop Top Plug	10/14/2011 12:15							PLUG LAUNCHED
Pump Displacement	10/14/2011 12:17		10	56.5			390.0	FRESH WATER
Slow Rate	10/14/2011 12:25		2	10			195.0	SLOW RATE 10 BBLS PRIOR TO CALCULATED DISPLACEMENT
Bump Plug	10/14/2011 12:30		2		66.5		680.0	PLUG BUMPED
Check Floats	10/14/2011 12:31							FLOATS HOLDING. RETURNED 0.5 BBL H2O TO PUMP
End Job	10/14/2011 12:32							PIPE WAS STATIC DURING JOB. GOOD CIRCULATION THROUGHOUT JOB. HES RETURNED 25 BBL OF CEMENT TO SURFACE
Pre-Rig Down Safety Meeting	10/14/2011 12:40							WITH ALL HES PERSONNEL
Rig-Down Equipment	10/14/2011 12:45							
Pre-Convoy Safety Meeting	10/14/2011 13:50							WITH ALL HES PERSONNEL
Crew Leave Location	10/14/2011 14:00							
Comment	10/14/2011 14:01							THANK YOU FOR USING HALLIBURTON CEMENT DEPARTMENT. JEREMY YOUNG AND CREW.

WILLIAMS GM 34-23, 9 5/8 SURFACE

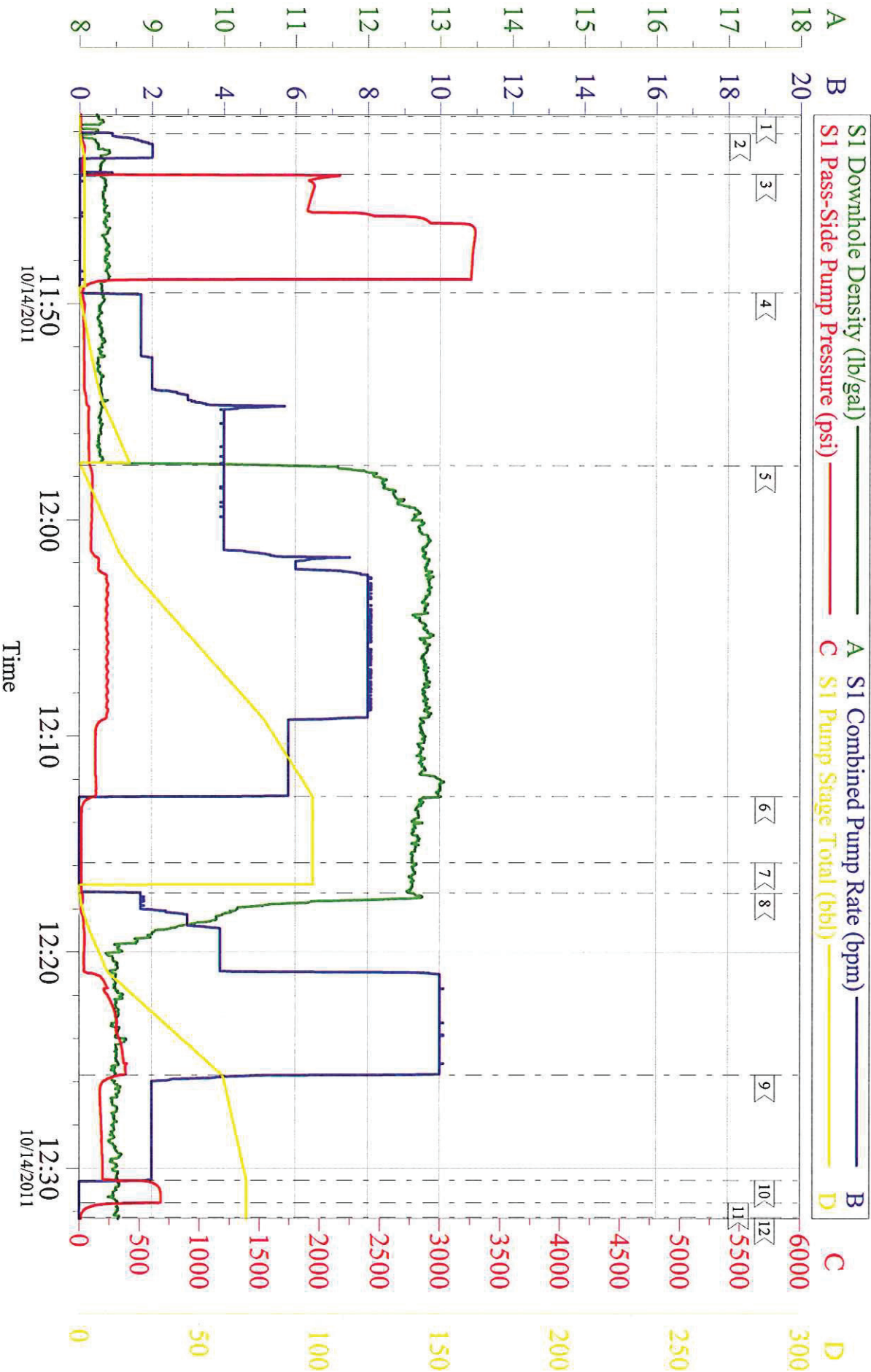


Local Event Log

1 <	START JOB	11:41:17	2 <	FILL LINES	11:42:06	3 <	TEST LINES	11:43:59
4 <	PUMP H2O SPACER	11:49:30	5 <	PUMP TAIL CEMENT	11:57:29	6 <	SHUTDOWN	12:12:48
7 <	DROP TOP PLUG	12:15:52	8 <	PUMP DISPLACEMENT	12:17:16	9 <	SLOW RATE	12:25:41
10 <	BUMP PLUG	12:30:34	11 <	CHECK FLOATS	12:31:36	12 <	END JOB	12:32:17

Customer:	WILLIAMS	Job Date:	14-Oct-2011	Sales Order #:	8534358
Well Description:	GM 34-23	Job Type:	SURFACE	ADC Used:	YES
Customer Rep:	AL HARTL	Service Supervisor:	JEREMY YOUNG	Pump #/Operator:	5/KYLE BATH

WILLIAMS GM 34-23, 9 5/8 SURFACE



Customer:	WILLIAMS	Job Date:	14-Oct-2011	Sales Order #:	8534358
Well Description:	GM 34-23	Job Type:	SURFACE	ADC Used:	YES
Customer Rep:	AL HARTL	Service Supervisor:	JEREMY YOUNG	Pump #/Operator:	5/KYLE BATH