

# Federal RGU 33-36-198

RGU 433-36-298, RGU 33-36-198, RG 343-36-198, RG 543-36-198,  
RGU 344-36-198, RGU 544-36-198, RGU 34-36-198, RGU 434-36-198



PHOTO: VIEW FROM PAD CENTER

CAMERA ANGLE: NORTH



PHOTO: VIEW FROM PAD CENTER

CAMERA ANGLE: SOUTH

REVISED: 1/25/12

PHOTO DATE:	11/18/11
TAKEN BY:	JK
DRAWN BY:	WK
SHEET:	1 of 3
PROJECT:	Highlands

136 East Third Street  
Rifle, Colorado 81650  
Ph. (970) 625-2720  
Fax (970) 625-2773



**BOOKCLIFF**  
Survey Services, Inc.

**WELL LOCATION PLAT Prepared for:**  
**WPXENERGY** WPX Energy Rocky Mountain, LLC

SW1/4 SE1/4, NW1/4 SE1/4, SECTION 36  
T. 1 S., R. 98 W. of the 6th. P.M.  
Rio BLANCO COUNTY, COLORADO



# Federal RGU 33-36-198

RGU 433-36-298, RGU 33-36-198, RG 343-36-198, RG 543-36-198,  
RGU 344-36-198, RGU 544-36-198, RGU 34-36-198, RGU 434-36-198



PHOTO: VIEW FROM PAD CENTER

CAMERA ANGLE: EAST



PHOTO: VIEW FROM PAD CENTER

CAMERA ANGLE: WEST

REVISED: 1/25/12

PHOTO DATE: 11/18/11  
TAKEN BY: JK  
DRAWN BY: WK  
SHEET: 2 of 3  
PROJECT: Highlands

136 East Third Street  
Rt 6, Colorado 81650  
Ph. (970) 625-2720  
Fax (970) 625-2773



WELL LOCATION PLAT Prepared for:  
**WPXENERGY** WPX Energy Rocky Mountain, LLC

SW1/4 SE1/4, NW1/4 SE1/4, SECTION 36  
T. 1 S., R. 98 W. of the 6th. P.M.  
Rio BLANCO COUNTY, COLORADO



# Federal RGU 33-36-198

RGU 433-36-298, RGU 33-36-198, RG 343-36-198, RG 543-36-198,  
RGU 344-36-198, RGU 544-36-198, RGU 34-36-198, RGU 434-36-198

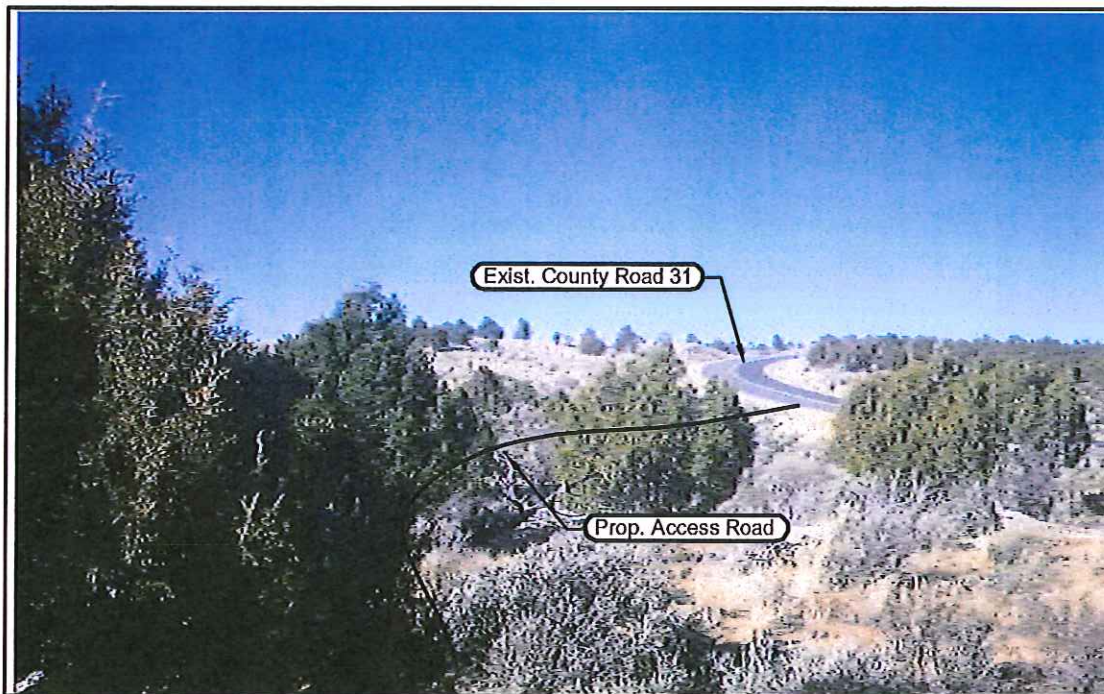


PHOTO: VIEW OF EXISTING ACCESS ROAD

CAMERA ANGLE: NORTHWEST



PHOTO: VIEW OF OVERALL DRILL PAD

CAMERA ANGLE: WEST

REVISED: 1/25/12

PHOTO DATE: 11/18/11  
TAKEN BY: JK  
DRAWN BY: WK  
SHEET: 3 of 3  
PROJECT: Highlands

WELL LOCATION PLAT Prepared for:  
WPXENERGY WPX Energy Rocky Mountain, LLC

SW1/4 SE1/4, NW1/4 SE1/4, SECTION 36  
T. 1 S., R. 98 W. of the 6th. P.M.  
Rio BLANCO COUNTY, COLORADO

135 East Third Street  
Rifle, Colorado 81650  
Ph. (970) 625-2720  
Fax (970) 625-2773



**BOOKCLIFF**  
Survey Services, Inc.